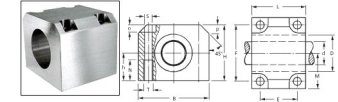




MBA

Housings - Linear - Standard



Bearings not included.

NOTE: You may need to use adhesive to hold the bearing securely in place on the 'D' dimension.

These lightweight but heavy duty Aluminium sets offer high accuracy.

They consist of a corrosion resistant, highly rigid Aluminium housing.

The units can be attached to any surface to offer support in any direction.

For use with closed linear bearings with OD matching the housing bore dimension D.

Housings - Linear - Standard

Part Number	Suits Bearing (d x D) mm	Width (B) mm	Height (H) mm	Centre Height (h) mm	Length (L) mm	Centre Width (M) mm	Screw Size (T)	Screw Length (N) mm	Load Capacity (C / Co) N
	<i>inches</i>	<i>inches</i>	<i>inches</i>	<i>inches</i>	<i>inches</i>	<i>inches</i>		<i>inches</i>	
# AE35-912	12.0 x 22.0	42.0 <i>1.654</i>	35.0 <i>1.378</i>	18.0 <i>0.709</i>	39.0 <i>1.535</i>	21.0 <i>0.827</i>	M5	11 <i>0.433</i>	570 / 800
# AE35-916	16.0 x 26.0	52.0 <i>2.047</i>	42.0 <i>1.654</i>	22.0 <i>0.866</i>	43.0 <i>1.693</i>	26.0 <i>1.024</i>	M6	13 <i>0.512</i>	800 / 940
# AE35-920	20.0 x 32.0	60.0 <i>2.362</i>	50.0 <i>1.969</i>	25.0 <i>0.984</i>	54.0 <i>2.126</i>	30.0 <i>1.181</i>	M8	18 <i>0.709</i>	900 / 1400

Indicates item not stocked at time of printing - Please enquire for lead time

E&OE Pricing and all details subject to change without notice - Copyright Miniature Bearings Australia Pty Ltd

MBA Size Listings are a guide to sizes only and must not be solely relied on for critical design information.

Housings - Linear - Standard

Part Number	Suits Bearing (d x D) mm	Width (B) mm	Height (H) mm	Centre Height (h) mm	Length (L) mm	Centre Width (M) mm	Screw Size (T)	Screw Length (N) mm	Load Capacity (C / Co) N
	<i>inches</i>	<i>inches</i>	<i>inches</i>	<i>inches</i>	<i>inches</i>	<i>inches</i>		<i>inches</i>	
# AE35-925	25.0 x 40.0	76.0 <i>2.992</i>	60.0 <i>2.362</i>	30.0 <i>1.181</i>	67.0 <i>2.638</i>	38.0 <i>1.496</i>	M10	22 <i>0.866</i>	1100 / 1700
# AE35-930	30.0 x 47.0	86.0 <i>3.386</i>	70.0 <i>2.756</i>	35.0 <i>1.378</i>	79.0 <i>3.110</i>	43.0 <i>1.693</i>	M10	22 <i>0.866</i>	1700 / 3000
# AE35-940	40.0 x 62.0	108.0 <i>4.252</i>	90.0 <i>3.543</i>	45.0 <i>1.772</i>	91.0 <i>3.583</i>	54.0 <i>2.126</i>	M12	26 <i>1.024</i>	2300 / 4700
# AE35-950	50.0 x 75.0	130.0 <i>5.118</i>	105.0 <i>4.134</i>	50.0 <i>1.969</i>	113.0 <i>4.449</i>	65.0 <i>2.559</i>	M16	34 <i>1.339</i>	4100 / 8300

Indicates item not stocked at time of printing - Please enquire for lead time

E&OE Pricing and all details subject to change without notice - Copyright Miniature Bearings Australia Pty Ltd

MBA Size Listings are a guide to sizes only and must not be solely relied on for critical design information.



DISTRIBUTED BY

Ask us to put your name and address here

<http://www.minibearings.com.au/product>

Ph +61 7 3245 7977

Fax +61 7 3245 1017

Catalogue requests to catalogues@minibearings.com.au
