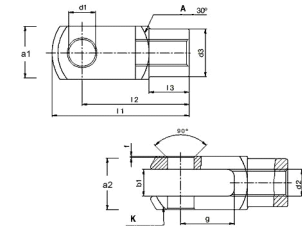




MBA

Joints - Clevis - Plastic



Use with plastic rod ends - Includes pin and clip. See also yokes.

Comes with clevis pin and retaining clip.

Corrosion Resistant, Lightweight.

High Tensile Strength (Shown in table as Short Term / Long Term).

Vibration Dampening / Noise Dampening.

(1) Tensile Strengths shown are Maximum Static axial in Newtons.

Joints - Clevis - Plastic

Part Number	Hole Dia. (d1) mm	Depth from Centre (g) mm	Top Width (a1 x a2) mm	Opening (b1) mm	Thread	Base Diameter (d3) mm	Lengths (l1 / l2 / l3) mm	Thread Direction	Intermit. Tensile Strength (1) N	Contin. Tensile Strength (1) N
	<i>inches</i>	<i>inches</i>	<i>inches</i>	<i>inches</i>		<i>inches</i>	<i>inches</i>			
CLJ-05.00x10-M5R	5.0 <i>0.197</i>	10.0 <i>0.394</i>	10.0 x 10.0	5.0 <i>0.197</i>	M5 x 0.80	9.0 <i>0.354</i>	25.0 / 20.0 / 7.5	Right Hand	1000	500
CLJ-05.00-M4R	5.0 <i>0.197</i>	10.0 <i>0.394</i>	10.0 x 10.0	5.0 <i>0.197</i>	M4 x 0.70	9.0 <i>0.354</i>	25.0 / 20.0 / 7.5	Right Hand	1000	500
# CLJ-05.00-M4L	5.0 <i>0.197</i>	10.0 <i>0.394</i>	10.0 x 10.0	5.0 <i>0.197</i>	M4 x 0.70	9.0 <i>0.354</i>	25.0 / 20.0 / 7.5	Left Hand	1000	500

Indicates item not stocked at time of printing - Please enquire for lead time

E&OE Pricing and all details subject to change without notice - Copyright Miniature Bearings Australia Pty Ltd

MBA Size Listings are a guide to sizes only and must not be solely relied on for critical design information.

Joins - Clevis - Plastic

Part Number	Hole Dia. (d1) mm <i>inches</i>	Depth from Centre (g) mm <i>inches</i>	Top Width (a1 x a2) mm <i>inches</i>	Opening (b1) mm <i>inches</i>	Thread	Base Diameter (d3) mm <i>inches</i>	Lengths (l1 / l2 / l3) mm <i>inches</i>	Thread Direction	Intermit. Tensile Strength (1) N	Contin. Tensile Strength (1) N
# CLJ-05.00x10-M5L	5.0 <i>0.197</i>	10.0 <i>0.394</i>	10.0 x 10.0	5.0 <i>0.197</i>	M5 x 0.80	9.0 <i>0.354</i>	25.0 / 20.0 / 7.5	Left Hand	1000	500
CLJ-05.00x12-M5R	5.0 <i>0.197</i>	12.0 <i>0.472</i>	12.0 x 12.0	6.0 <i>0.236</i>	M5 x 0.80	10.0 <i>0.394</i>	30.6 / 24.0 / 9.0	Right Hand	1200	600
# CLJ-05.00x12-M5L	5.0 <i>0.197</i>	12.0 <i>0.472</i>	12.0 x 12.0	6.0 <i>0.236</i>	M5 x 0.80	10.0 <i>0.394</i>	30.6 / 24.0 / 9.0	Left Hand	1200	600
CLJ-06.00-M6R	6.0 <i>0.236</i>	12.0 <i>0.472</i>	12.0 x 12.0	6.0 <i>0.236</i>	M6 x 1.00	10.0 <i>0.394</i>	30.6 / 24.0 / 9.0	Right Hand	1400	700
CLJ-06.00-M6L	6.0 <i>0.236</i>	12.0 <i>0.472</i>	12.0 x 12.0	6.0 <i>0.236</i>	M6 x 1.00	10.0 <i>0.394</i>	30.6 / 24.0 / 9.0	Left Hand	1400	700
# CLJ-08.00-M8L	8.0 <i>0.315</i>	16.0 <i>0.630</i>	16.0 x 16.0	8.0 <i>0.315</i>	M8 x 1.25	14.0 <i>0.551</i>	41.6 / 32.0 / 12.0	Left Hand	2700	1350
# CLJ-08.00-M8R	8.0 <i>0.315</i>	16.0 <i>0.630</i>	16.0 x 16.0	8.0 <i>0.315</i>	M8 x 1.25	14.0 <i>0.551</i>	41.6 / 32.0 / 12.0	Right Hand	2700	1350
CLJ-10.00-M10x1.25L	10.0 <i>0.394</i>	20.0 <i>0.787</i>	20.0 x 20.0	10.0 <i>0.394</i>	M10 x 1.25	18.0 <i>0.709</i>	51.30 / 40.0 / 15.0	Left Hand	4700	2350
CLJ-10.00-M10x1.25R	10.0 <i>0.394</i>	20.0 <i>0.787</i>	20.0 x 20.0	10.0 <i>0.394</i>	M10 x 1.25	18.0 <i>0.709</i>	51.30 / 40.0 / 15.0	Right Hand	4700	2350

Indicates item not stocked at time of printing - Please enquire for lead time

E&OE Pricing and all details subject to change without notice - Copyright Miniature Bearings Australia Pty Ltd

MBA Size Listings are a guide to sizes only and must not be solely relied on for critical design information.

Joins - Clevis - Plastic

Part Number	Hole Dia. (d1) mm <i>inches</i>	Depth from Centre (g) mm <i>inches</i>	Top Width (a1 x a2) mm <i>inches</i>	Opening (b1) mm <i>inches</i>	Thread	Base Diameter (d3) mm <i>inches</i>	Lengths (l1 / l2 / l3) mm <i>inches</i>	Thread Direction	Intermit. Tensile Strength (1) N	Contin. Tensile Strength (1) N
# CLJ-10.00-M10R	10.0 <i>0.394</i>	20.0 <i>0.787</i>	20.0 x 20.0	10.0 <i>0.394</i>	M10 x 1.50	18.0 <i>0.709</i>	51.30 / 40.0 / 15.0	Right Hand	4700	2350
# CLJ-10.00-M10L	10.0 <i>0.394</i>	20.0 <i>0.787</i>	20.0 x 20.0	10.0 <i>0.394</i>	M10 x 1.50	18.0 <i>0.709</i>	51.30 / 40.0 / 15.0	Left Hand	4700	2350
# CLJ-12.00-M12L	12.0 <i>0.472</i>	24.0 <i>0.945</i>	24.0 x 24.0	12.0 <i>0.472</i>	M12 x 1.75	20.0 <i>0.787</i>	61.30 / 48.0 / 18.0	Left Hand	5700	2850
# CLJ-12.00-M12x1.25L	12.0 <i>0.472</i>	24.0 <i>0.945</i>	24.0 x 24.0	12.0 <i>0.472</i>	M12 x 1.25	20.0 <i>0.787</i>	61.30 / 48.0 / 18.0	Left Hand	5700	2850
# CLJ-12.00-M12x1.25R	12.0 <i>0.472</i>	24.0 <i>0.945</i>	24.0 x 24.0	12.0 <i>0.472</i>	M12 x 1.25	20.0 <i>0.787</i>	61.30 / 48.0 / 18.0	Right Hand	5700	2850
# CLJ-12.00-M12R	12.0 <i>0.472</i>	24.0 <i>0.945</i>	24.0 x 24.0	12.0 <i>0.472</i>	M12 x 1.75	20.0 <i>0.787</i>	61.30 / 48.0 / 18.0	Right Hand	5700	2850
# CLJ-14.00-M14L	14.0 <i>0.551</i>	28.0 <i>1.102</i>	27.0 x 27.0	14.0 <i>0.551</i>	M14 x 2.00	24.0 <i>0.945</i>	71.30 / 56.0 / 22.5	Left Hand	6600	3300
# CLJ-14.00-M14R	14.0 <i>0.551</i>	28.0 <i>1.102</i>	27.0 x 27.0	14.0 <i>0.551</i>	M14 x 2.00	24.0 <i>0.945</i>	71.30 / 56.0 / 22.5	Right Hand	6600	3300

Indicates item not stocked at time of printing - Please enquire for lead time

E&OE Pricing and all details subject to change without notice - Copyright Miniature Bearings Australia Pty Ltd

MBA Size Listings are a guide to sizes only and must not be solely relied on for critical design information.

Joins - Clevis - Plastic

Part Number	Hole Dia. (d1) mm <i>inches</i>	Depth from Centre (g) mm <i>inches</i>	Top Width (a1 x a2) mm <i>inches</i>	Opening (b1) mm <i>inches</i>	Thread	Base Diameter (d3) mm <i>inches</i>	Lengths (l1 / l2 / l3) mm <i>inches</i>	Thread Direction	Intermit. Tensile Strength (1) N	Contin. Tensile Strength (1) N
# CLJ-15.00-M14R	15.0 <i>0.591</i>	28.0 <i>1.102</i>	27.0 x 27.0 <i>inches</i>	14.0 <i>0.551</i>	M14 x 2.00	24.0 <i>0.945</i>	71.30 / 56.0 / 22.5 <i>inches</i>	Right Hand	3200	1600
# CLJ-15.00-M14L	15.0 <i>0.591</i>	28.0 <i>1.102</i>	27.0 x 27.0 <i>inches</i>	14.0 <i>0.551</i>	M14 x 2.00	24.0 <i>0.945</i>	71.30 / 56.0 / 22.5 <i>inches</i>	Left Hand	3200	1600
# CLJ-16.00-M16x1.5R	16.0 <i>0.630</i>	32.0 <i>1.260</i>	32.0 x 32.0 <i>inches</i>	16.0 <i>0.630</i>	M16 x 1.50	26.0 <i>1.024</i>	81.90 / 64.0 / 24.0 <i>inches</i>	Right Hand	7500	3750
# CLJ-16.00-M16R	16.0 <i>0.630</i>	32.0 <i>1.260</i>	32.0 x 32.0 <i>inches</i>	16.0 <i>0.630</i>	M16 x 2.00	26.0 <i>1.024</i>	81.90 / 64.0 / 24.0 <i>inches</i>	Right Hand	7500	3750
# CLJ-16.00-M16L	16.0 <i>0.630</i>	32.0 <i>1.260</i>	32.0 x 32.0 <i>inches</i>	16.0 <i>0.630</i>	M16 x 2.00	26.0 <i>1.024</i>	81.90 / 64.0 / 24.0 <i>inches</i>	Left Hand	7500	3750
# CLJ-16.00-M16x1.5L	16.0 <i>0.630</i>	32.0 <i>1.260</i>	32.0 x 32.0 <i>inches</i>	16.0 <i>0.630</i>	M16 x 1.50	26.0 <i>1.024</i>	81.90 / 64.0 / 24.0 <i>inches</i>	Left Hand	7500	3750

Indicates item not stocked at time of printing - Please enquire for lead time

E&OE Pricing and all details subject to change without notice - Copyright Miniature Bearings Australia Pty Ltd

MBA Size Listings are a guide to sizes only and must not be solely relied on for critical design information.



DISTRIBUTED BY

Ask us to put your name and address here

<http://www.minibearings.com.au/product>

Ph +61 7 3245 7977

Fax +61 7 3245 1017

Catalogue requests to catalogues@minibearings.com.au

