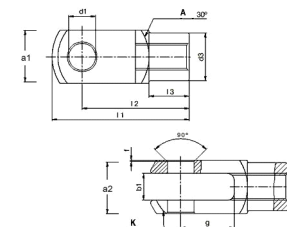




# MBA

## Joints - Clevis - Stainless Steel



Stainless 1.4305

Stainless Steel Clevis assembly supplied complete with stainless pin.

See also yokes.

This catalogue to be read in conjunction with information at <http://www.minibearings.com.au//partslist/jointsclevispringclips/fasteners/wide/1/>

<http://www.minibearings.com.au//categories/clevis+pin/all/pics/>

## Joints - Clevis - Stainless Steel

Part Number	Hole Dia. (d1)	Depth from Centre (g) mm	Top Width (a1 x a2) mm	Opening (b1) mm	Thread mm	Base Diameter (d3) mm	Lengths (l1 / l2 / l3) mm	Thread Direction
		<i>inches</i>	<i>inches</i>	<i>inches</i>	<i>inches</i>	<i>inches</i>	<i>inches</i>	
# CLS-5SS	5.00	10.00 <i>0.394</i>	10 x 10	5.00 <i>0.197</i>	M5 x 0.80	9.00 <i>0.354</i>	26 / 20 / 7.5	Right Hand
# CLS-6SS	6.00	12.00 <i>0.472</i>	12 x 12	6.00 <i>0.236</i>	M6 x 1.00	10.00 <i>0.394</i>	31 / 24 / 9	Right Hand
# CLS-8SS	8.00	16.00 <i>0.630</i>	16 x 16	8.00 <i>0.315</i>	M8 x 1.25	14.00 <i>0.551</i>	42 / 32 / 12	Right Hand

# Indicates item not stocked at time of printing - Please enquire for lead time

E&OE Pricing and all details subject to change without notice - Copyright Miniature Bearings Australia Pty Ltd

MBA Size Listings are a guide to sizes only and must not be solely relied on for critical design information.

## Joins - Clevis - Stainless Steel

Part Number	Hole Dia. (d1)	Depth from Centre (g) mm	Top Width (a1 x a2) mm	Opening (b1) mm	Thread mm	Base Diameter (d3) mm	Lengths (l1 / l2 / l3) mm	Thread Direction
		<i>inches</i>	<i>inches</i>	<i>inches</i>	<i>inches</i>	<i>inches</i>	<i>inches</i>	
# CLS-10SS	10.00	20.00 <i>0.787</i>	20 x 20	10.00 <i>0.394</i>	M10 x 1.50	18.00 <i>0.709</i>	52 / 40 / 15	Right Hand
# CLS-12SS	12.00	24.00 <i>0.945</i>	24 x 24	12.00 <i>0.472</i>	M12 x 1.75	20.00 <i>0.787</i>	62 / 48 / 18	Right Hand
# CLS-16SS	16.00	32.00 <i>1.260</i>	32 x 32	16.00 <i>0.630</i>	M16 x 2.00	26.00 <i>1.024</i>	83 / 64 / 24	Right Hand

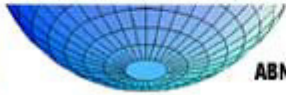
# Indicates item not stocked at time of printing - Please enquire for lead time

E&OE Pricing and all details subject to change without notice - Copyright Miniature Bearings Australia Pty Ltd

MBA Size Listings are a guide to sizes only and must not be solely relied on for critical design information.

# MBA

# MINIATURE BEARINGS AUSTRALIA PTY LTD



ABN 94 069 113 800



DISTRIBUTED BY

Ask us to put your name and address here

<http://www.minibearings.com.au/product>

Ph +61 7 3245 7977

Fax +61 7 3245 1017

Catalogue requests to [catalogues@minibearings.com.au](mailto:catalogues@minibearings.com.au)

**SDPSI**  
Stock Drive Products / Spring Instrument

**JK**

ANOTHER QUALITY PRODUCT BY  
**MOLYTEC**  
Australia

**Origin**  
BEARING

**WIB**

**THOMSON**

**EZO**



 **myonic**  
solutions in microspace

**rino**



**inox**  
Quality Products

**GRW**

**DualVee<sup>x</sup>**  
Bishop-Wisecarver Corp.

**ondrives**  
Precision Manufacturing

**RMB**

**SOLARBOTICS<sup>INTL</sup>**

**KSK**  
BALL BEARING