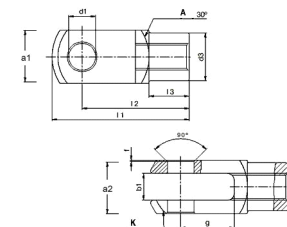




MBA

Joints - Clevis - Steel



Made from zinc plated 9SMn steel.

Steel 9 SMn 28K (550-700 N/mm²).

Zinc plate and clear passivated.

Pin not included.

See also yokes.

This catalogue to be read in conjunction with information at <http://www.minibearings.com.au//partslist/jointsclevisspringclips/fasteners/wide/1/>
<http://www.minibearings.com.au//categories/clevis+pin/all/pics/>

Joints - Clevis - Steel

Part Number	Hole Dia. (d1)	Depth from Centre (g) mm	Top Width (a1 x a2) mm	Opening (b1) mm	Thread mm	Base Diameter (d3) mm	Lengths (l1 / l2 / l3) mm	Thread Direction
		<i>inches</i>	<i>inches</i>	<i>inches</i>	<i>inches</i>	<i>inches</i>	<i>inches</i>	
CLS-4	4.00	8.00 <i>0.315</i>	8 x 8	4.00 <i>0.157</i>	M4 x 0.70	8.00 <i>0.315</i>	21 / 16 / 6	Right Hand
CLS-5	5.00	10.00 <i>0.394</i>	10 x 10	5.00 <i>0.197</i>	M5 x 0.80	9.00 <i>0.354</i>	26 / 20 / 7.5	Right Hand
CLL-5	5.00	20.00 <i>0.787</i>	10 x 10	5.14/5.26	M5 x 0.80	9.00 <i>0.354</i>	36 / 30 / 5	Right Hand

Indicates item not stocked at time of printing - Please enquire for lead time

E&OE Pricing and all details subject to change without notice - Copyright Miniature Bearings Australia Pty Ltd

MBA Size Listings are a guide to sizes only and must not be solely relied on for critical design information.

Joins - Clevis - Steel

Part Number	Hole Dia. (d1)	Depth from Centre (g) mm	Top Width (a1 x a2) mm	Opening (b1) mm	Thread mm	Base Diameter (d3) mm	Lengths (l1 / l2 / l3) mm	Thread Direction
		<i>inches</i>	<i>inches</i>	<i>inches</i>	<i>inches</i>	<i>inches</i>	<i>inches</i>	
CLS-6	6.00	12.00 <i>0.472</i>	12 x 12	6.00 <i>0.236</i>	M6 x 1.00	10.00 <i>0.394</i>	31 / 24 / 9	Right Hand
CLL-6	6.00	24.00 <i>0.945</i>	12 x 12	6.14/6.26	M6 x 1.00	10.00 <i>0.394</i>	43 / 36 / 6	Right Hand
CLS-8	8.00	16.00 <i>0.630</i>	16 x 16	8.00 <i>0.315</i>	M8 x 1.25	14.00 <i>0.551</i>	42 / 32 / 12	Right Hand
CLL-8	8.00	32.00 <i>1.260</i>	16 x 16	8.15/8.30	M8 x 1.25	14.00 <i>0.551</i>	58 / 48 / 8	Right Hand
# CLS-10C	10.00	20.00 <i>0.787</i>	20 x 20	10.00 <i>0.394</i>	M10 x 1.25	18.00 <i>0.709</i>	52 / 40 / 15	Right Hand
# CLS-10	10.00	20.00 <i>0.787</i>	20 x 20	10.00 <i>0.394</i>	M10 x 1.50	18.00 <i>0.709</i>	52 / 40 / 15	Right Hand
# CLL-10	10.00	40.00 <i>1.575</i>	20 x 20	10.15/10.30	M10 x 1.50	18.00 <i>0.709</i>	72 / 60 / 10	Right Hand
# CLS-12C	12.00	24.00 <i>0.945</i>	24 x 24	12.00 <i>0.472</i>	M12 x 1.25	20.00 <i>0.787</i>	62 / 48 / 18	Right Hand
# CLS-12	12.00	24.00 <i>0.945</i>	24 x 24	12.00 <i>0.472</i>	M12 x 1.75	20.00 <i>0.787</i>	62 / 48 / 18	Right Hand
# CLL-12	12.00	48.00 <i>1.890</i>	24 x 24	12.15/12.33	M12 x 1.75	20.00 <i>0.787</i>	86 / 72 / 12	Right Hand

Indicates item not stocked at time of printing - Please enquire for lead time

E&OE Pricing and all details subject to change without notice - Copyright Miniature Bearings Australia Pty Ltd

MBA Size Listings are a guide to sizes only and must not be solely relied on for critical design information.

Joins - Clevis - Steel

Part Number	Hole Dia. (d1)	Depth from Centre (g) mm	Top Width (a1 x a2) mm	Opening (b1) mm	Thread mm	Base Diameter (d3) mm	Lengths (l1 / l2 / l3) mm	Thread Direction
		<i>inches</i>	<i>inches</i>	<i>inches</i>	<i>inches</i>	<i>inches</i>	<i>inches</i>	
# CLS-16	16.00	32.00 <i>1.260</i>	32 x 32	16.00 <i>0.630</i>	M16 x 2.00	26.00 <i>1.024</i>	83 / 64 / 24	Right Hand
# CLS-16C	16.00	32.00 <i>1.260</i>	32 x 32	16.00 <i>0.630</i>	M16 x 1.50	26.00 <i>1.024</i>	83 / 64 / 24	Right Hand
# CLS-20	20.00	40.00 <i>1.575</i>	40 x 40	20.00 <i>0.787</i>	M20 x 2.50	34.00 <i>1.339</i>	105 / 80 / 30	Right Hand

Indicates item not stocked at time of printing - Please enquire for lead time

E&OE Pricing and all details subject to change without notice - Copyright Miniature Bearings Australia Pty Ltd

MBA Size Listings are a guide to sizes only and must not be solely relied on for critical design information.



DISTRIBUTED BY

Ask us to put your name and address here

<http://www.minibearings.com.au/product>

Ph +61 7 3245 7977

Fax +61 7 3245 1017

Catalogue requests to catalogues@minibearings.com.au

