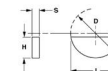




MBA

Keys - Woodruff



Stainless steel and carbon steel

Keys - Woodruff

Part Number	Thickness (S) mm <i>inches</i>	Diameter (D) mm <i>inches</i>	Height (H) mm <i>inches</i>	Approx. Length (L) mm <i>inches</i>	Material
# KW0150-0700-C45	1.50 <i>0.059</i>	7.00 <i>0.276</i>	2.6 <i>0.102</i>	6.75 <i>0.266</i>	C45 Carbon Steel
# KW0150-0700-C	1.50 <i>0.059</i>	7.00 <i>0.276</i>	2.6 <i>0.102</i>	6.76 <i>0.266</i>	Carbon Steel (Grade Unspecified)
# KW0159-0635-3	1.59 <i>0.063</i>	6.35 <i>0.250</i>	2.8 <i>0.110</i>	6.22 <i>0.245</i>	303 Stainless Steel
KW0159-0793-3	1.59 <i>0.063</i>	7.93 <i>0.312</i>	3.6 <i>0.142</i>	7.77 <i>0.306</i>	303 Stainless Steel

Indicates item not stocked at time of printing - Please enquire for lead time

E&OE Pricing and all details subject to change without notice - Copyright Miniature Bearings Australia Pty Ltd

MBA Size Listings are a guide to sizes only and must not be solely relied on for critical design information.

Keys - Woodruff

Part Number	Thickness (S) mm	Diameter (D) mm	Height (H) mm	Approx. Length (L) mm	Material
	<i>inches</i>	<i>inches</i>	<i>inches</i>	<i>inches</i>	
# KW0159-0953-3	1.59 <i>0.063</i>	9.53 <i>0.375</i>	4.4 <i>0.173</i>	9.33 <i>0.367</i>	303 Stainless Steel
# KW0159-1270-3	1.59 <i>0.063</i>	12.70 <i>0.500</i>	5.2 <i>0.205</i>	12.45 <i>0.490</i>	303 Stainless Steel
# KW0159-1270-Z	1.59 <i>0.063</i>	12.70 <i>0.500</i>	-	12.45 <i>0.490</i>	Zinc Plated 1035 Steel
# KW0200-0700-C	2.00 <i>0.079</i>	7.00 <i>0.276</i>	2.6 <i>0.102</i>	6.76 <i>0.266</i>	Carbon Steel (Grade Unspecified)
KW0200-0700-C45	2.00 <i>0.079</i>	7.00 <i>0.276</i>	2.6 <i>0.102</i>	6.75 <i>0.266</i>	C45 Carbon Steel
# KW0200-1000-C	2.00 <i>0.079</i>	10.00 <i>0.394</i>	3.7 <i>0.146</i>	9.66 <i>0.380</i>	Carbon Steel (Grade Unspecified)
# KW0200-1000-C45	2.00 <i>0.079</i>	10.00 <i>0.394</i>	3.7 <i>0.146</i>	9.66 <i>0.380</i>	C45 Carbon Steel
# KW0200-1300-C45	2.00 <i>0.079</i>	13.00 <i>0.512</i>	5.0 <i>0.197</i>	12.65 <i>0.498</i>	C45 Carbon Steel
# KW0200-1300-C	2.00 <i>0.079</i>	13.00 <i>0.512</i>	5.0 <i>0.197</i>	12.65 <i>0.498</i>	Carbon Steel (Grade Unspecified)

Indicates item not stocked at time of printing - Please enquire for lead time

E&OE Pricing and all details subject to change without notice - Copyright Miniature Bearings Australia Pty Ltd

MBA Size Listings are a guide to sizes only and must not be solely relied on for critical design information.

Keys - Woodruff

Part Number	Thickness (S) mm <i>inches</i>	Diameter (D) mm <i>inches</i>	Height (H) mm <i>inches</i>	Approx. Length (L) mm <i>inches</i>	Material
# KW0238-0793-3	2.38 <i>0.094</i>	7.93 <i>0.312</i>	3.6 <i>0.142</i>	7.77 <i>0.306</i>	303 Stainless Steel
# KW0238-0953-3	2.38 <i>0.094</i>	9.53 <i>0.375</i>	4.4 <i>0.173</i>	9.33 <i>0.367</i>	303 Stainless Steel
KW0238-1270-3	2.38 <i>0.094</i>	12.70 <i>0.500</i>	5.2 <i>0.205</i>	12.45 <i>0.490</i>	303 Stainless Steel
# KW0238-1270-Z	2.38 <i>0.094</i>	12.70 <i>0.500</i>	-	12.45 <i>0.490</i>	Zinc Plated 1035 Steel
# KW0238-1588-3	2.38 <i>0.094</i>	15.88 <i>0.625</i>	6.4 <i>0.252</i>	15.56 <i>0.613</i>	303 Stainless Steel
# KW0238-1588-Z	2.38 <i>0.094</i>	15.88 <i>0.625</i>	-	15.56 <i>0.613</i>	Zinc Plated 1035 Steel
KW0250-1000-C	2.50 <i>0.098</i>	10.00 <i>0.394</i>	3.7 <i>0.146</i>	9.66 <i>0.380</i>	Carbon Steel (Grade Unspecified)
# KW0250-1000-C45	2.50 <i>0.098</i>	10.00 <i>0.394</i>	3.7 <i>0.146</i>	9.66 <i>0.380</i>	C45 Carbon Steel
# KW0300-1000-C	3.00 <i>0.118</i>	10.00 <i>0.394</i>	3.7 <i>0.146</i>	9.66 <i>0.380</i>	Carbon Steel (Grade Unspecified)
KW0300-1000-C45	3.00 <i>0.118</i>	10.00 <i>0.394</i>	3.7 <i>0.146</i>	9.66 <i>0.380</i>	C45 Carbon Steel

Indicates item not stocked at time of printing - Please enquire for lead time

E&OE Pricing and all details subject to change without notice - Copyright Miniature Bearings Australia Pty Ltd

MBA Size Listings are a guide to sizes only and must not be solely relied on for critical design information.

Keys - Woodruff

Part Number	Thickness (S) mm <i>inches</i>	Diameter (D) mm <i>inches</i>	Height (H) mm <i>inches</i>	Approx. Length (L) mm <i>inches</i>	Material
# KW0300-1300-C	3.00 <i>0.118</i>	13.00 <i>0.512</i>	5.0 <i>0.197</i>	12.65 <i>0.498</i>	Carbon Steel (Grade Unspecified)
KW0300-1300-C45	3.00 <i>0.118</i>	13.00 <i>0.512</i>	5.0 <i>0.197</i>	12.65 <i>0.498</i>	C45 Carbon Steel
# KW0300-1600-C45	3.00 <i>0.118</i>	16.00 <i>0.630</i>	6.5 <i>0.256</i>	15.72 <i>0.619</i>	C45 Carbon Steel
# KW0300-1600-C	3.00 <i>0.118</i>	16.00 <i>0.630</i>	6.5 <i>0.256</i>	15.72 <i>0.619</i>	Carbon Steel (Grade Unspecified)
# KW0300-1900-C45	3.00 <i>0.118</i>	19.00 <i>0.748</i>	7.5 <i>0.295</i>	18.57 <i>0.731</i>	C45 Carbon Steel
# KW0300-1900-C	3.00 <i>0.118</i>	19.00 <i>0.748</i>	7.5 <i>0.295</i>	18.57 <i>0.731</i>	Carbon Steel (Grade Unspecified)
# KW0318-0953-3	3.18 <i>0.125</i>	9.53 <i>0.375</i>	4.4 <i>0.173</i>	9.33 <i>0.367</i>	303 Stainless Steel
# KW0318-1270-3	3.18 <i>0.125</i>	12.70 <i>0.500</i>	5.2 <i>0.205</i>	12.45 <i>0.490</i>	303 Stainless Steel
# KW0318-1270-Z	3.18 <i>0.125</i>	12.70 <i>0.500</i>	-	12.45 <i>0.490</i>	Zinc Plated 1035 Steel

Indicates item not stocked at time of printing - Please enquire for lead time

E&OE Pricing and all details subject to change without notice - Copyright Miniature Bearings Australia Pty Ltd

MBA Size Listings are a guide to sizes only and must not be solely relied on for critical design information.

Keys - Woodruff

Part Number	Thickness (S) mm <i>inches</i>	Diameter (D) mm <i>inches</i>	Height (H) mm <i>inches</i>	Approx. Length (L) mm <i>inches</i>	Material
# KW0318-1588-3	3.18 <i>0.125</i>	15.88 <i>0.625</i>	6.4 <i>0.252</i>	15.56 <i>0.613</i>	303 Stainless Steel
# KW0318-1588-Z	3.18 <i>0.125</i>	15.88 <i>0.625</i>	-	15.56 <i>0.613</i>	Zinc Plated 1035 Steel
# KW0318-1905-Z	3.18 <i>0.125</i>	19.05 <i>0.750</i>	-	18.67 <i>0.735</i>	Zinc Plated 1035 Steel
# KW0318-3810-Z	3.18 <i>0.125</i>	38.10 <i>1.500</i>	-	37.34 <i>1.470</i>	Zinc Plated 1035 Steel
# KW0397-1588-Z	3.97 <i>0.156</i>	15.88 <i>0.625</i>	-	15.56 <i>0.613</i>	Zinc Plated 1035 Steel
# KW0397-1905-Z	3.97 <i>0.156</i>	19.05 <i>0.750</i>	-	18.67 <i>0.735</i>	Zinc Plated 1035 Steel
# KW0397-2223-Z	3.97 <i>0.156</i>	22.23 <i>0.875</i>	-	21.78 <i>0.857</i>	Zinc Plated 1035 Steel
# KW0397-1588-3	3.97 <i>0.156</i>	15.88 <i>0.625</i>	6.4 <i>0.252</i>	15.56 <i>0.613</i>	303 Stainless Steel
KW0400-1300-C	4.00 <i>0.157</i>	13.00 <i>0.512</i>	5.0 <i>0.197</i>	12.65 <i>0.498</i>	Carbon Steel (Grade Unspecified)
KW0400-1300-C45	4.00 <i>0.157</i>	13.00 <i>0.512</i>	5.0 <i>0.197</i>	12.65 <i>0.498</i>	C45 Carbon Steel

Indicates item not stocked at time of printing - Please enquire for lead time

E&OE Pricing and all details subject to change without notice - Copyright Miniature Bearings Australia Pty Ltd

MBA Size Listings are a guide to sizes only and must not be solely relied on for critical design information.

Keys - Woodruff

Part Number	Thickness (S) mm <i>inches</i>	Diameter (D) mm <i>inches</i>	Height (H) mm <i>inches</i>	Approx. Length (L) mm <i>inches</i>	Material
KW0400-1600-C45	4.00 <i>0.157</i>	16.00 <i>0.630</i>	6.5 <i>0.256</i>	15.72 <i>0.619</i>	C45 Carbon Steel
# KW0400-1600-C	4.00 <i>0.157</i>	16.00 <i>0.630</i>	6.5 <i>0.256</i>	15.72 <i>0.619</i>	Carbon Steel (Grade Unspecified)
# KW0400-1900-C	4.00 <i>0.157</i>	19.00 <i>0.748</i>	7.5 <i>0.295</i>	18.57 <i>0.731</i>	Carbon Steel (Grade Unspecified)
# KW0400-1900-C45	4.00 <i>0.157</i>	19.00 <i>0.748</i>	7.5 <i>0.295</i>	18.57 <i>0.731</i>	C45 Carbon Steel
# KW0400-2200-C	4.00 <i>0.157</i>	22.00 <i>0.866</i>	9.0 <i>0.354</i>	21.63 <i>0.852</i>	Carbon Steel (Grade Unspecified)
# KW0400-2200-C45	4.00 <i>0.157</i>	22.00 <i>0.866</i>	9.0 <i>0.354</i>	21.63 <i>0.852</i>	C45 Carbon Steel
# KW0476-1588-Z	4.76 <i>0.187</i>	15.88 <i>0.625</i>	-	15.56 <i>0.613</i>	Zinc Plated 1035 Steel
# KW0476-1905-3	4.76 <i>0.187</i>	19.05 <i>0.750</i>	8.0 <i>0.315</i>	18.67 <i>0.735</i>	303 Stainless Steel
# KW0476-1905-6	4.76 <i>0.187</i>	19.05 <i>0.750</i>	8.0 <i>0.315</i>	18.67 <i>0.735</i>	316 Stainless Steel

Indicates item not stocked at time of printing - Please enquire for lead time

E&OE Pricing and all details subject to change without notice - Copyright Miniature Bearings Australia Pty Ltd

MBA Size Listings are a guide to sizes only and must not be solely relied on for critical design information.

Keys - Woodruff

Part Number	Thickness (S) mm <i>inches</i>	Diameter (D) mm <i>inches</i>	Height (H) mm <i>inches</i>	Approx. Length (L) mm <i>inches</i>	Material
# KW0476-1905-C	4.76 <i>0.187</i>	19.05 <i>0.750</i>	-	18.67 <i>0.735</i>	Carbon Steel
# KW0476-1905-Z	4.76 <i>0.187</i>	19.05 <i>0.750</i>	-	18.67 <i>0.735</i>	Zinc Plated 1035 Steel
KW0476-2223-C	4.76 <i>0.187</i>	22.23 <i>0.875</i>	-	21.78 <i>0.857</i>	Carbon Steel (Grade Unspecified)
# KW0476-2540-Z	4.76 <i>0.187</i>	25.40 <i>1.000</i>	-	24.89 <i>0.980</i>	Zinc Plated 1035 Steel
# KW0476-2858-Z	4.76 <i>0.187</i>	28.58 <i>1.125</i>	-	28.00 <i>1.102</i>	Zinc Plated 1035 Steel
# KW0476-3175-Z	4.76 <i>0.187</i>	31.75 <i>1.250</i>	-	31.12 <i>1.225</i>	Zinc Plated 1035 Steel
KW0500-1600-C	5.00 <i>0.197</i>	16.00 <i>0.630</i>	6.5 <i>0.256</i>	15.72 <i>0.619</i>	Carbon Steel (Grade Unspecified)
# KW0500-1600-C45	5.00 <i>0.197</i>	16.00 <i>0.630</i>	6.5 <i>0.256</i>	15.72 <i>0.619</i>	C45 Carbon Steel
# KW0500-1900-C	5.00 <i>0.197</i>	19.00 <i>0.748</i>	7.5 <i>0.295</i>	18.57 <i>0.731</i>	Carbon Steel (Grade Unspecified)

Indicates item not stocked at time of printing - Please enquire for lead time

E&OE Pricing and all details subject to change without notice - Copyright Miniature Bearings Australia Pty Ltd

MBA Size Listings are a guide to sizes only and must not be solely relied on for critical design information.

Keys - Woodruff

Part Number	Thickness (S) mm	Diameter (D) mm	Height (H) mm	Approx. Length (L) mm	Material
	<i>inches</i>	<i>inches</i>	<i>inches</i>	<i>inches</i>	
# KW0500-1900-C45	5.00 <i>0.197</i>	19.00 <i>0.748</i>	7.5 <i>0.295</i>	18.57 <i>0.731</i>	C45 Carbon Steel
# KW0500-2200-C	5.00 <i>0.197</i>	22.00 <i>0.866</i>	9.0 <i>0.354</i>	21.63 <i>0.852</i>	Carbon Steel (Grade Unspecified)
# KW0500-2200-C45	5.00 <i>0.197</i>	22.00 <i>0.866</i>	9.0 <i>0.354</i>	21.63 <i>0.852</i>	C45 Carbon Steel
# KW0500-2500-C	5.00 <i>0.197</i>	25.00 <i>0.984</i>	10.0 <i>0.394</i>	24.49 <i>0.964</i>	Carbon Steel (Grade Unspecified)
# KW0500-2500-C45	5.00 <i>0.197</i>	25.00 <i>0.984</i>	10.0 <i>0.394</i>	24.49 <i>0.964</i>	C45 Carbon Steel
# KW0556-2223-Z	5.56 <i>0.219</i>	22.23 <i>0.875</i>	-	21.78 <i>0.857</i>	Zinc Plated 1035 Steel
# KW0556-2540-Z	5.56 <i>0.219</i>	25.40 <i>1.000</i>	-	24.89 <i>0.980</i>	Zinc Plated 1035 Steel
# KW0556-2858-Z	5.56 <i>0.219</i>	28.58 <i>1.125</i>	-	28.00 <i>1.102</i>	Zinc Plated 1035 Steel
# KW0556-3175-Z	5.56 <i>0.219</i>	31.75 <i>1.250</i>	-	31.12 <i>1.225</i>	Zinc Plated 1035 Steel
# KW0600-1900-C45	6.00 <i>0.236</i>	19.00 <i>0.748</i>	7.5 <i>0.295</i>	18.57 <i>0.731</i>	C45 Carbon Steel

Indicates item not stocked at time of printing - Please enquire for lead time

E&OE Pricing and all details subject to change without notice - Copyright Miniature Bearings Australia Pty Ltd

MBA Size Listings are a guide to sizes only and must not be solely relied on for critical design information.

Keys - Woodruff

Part Number	Thickness (S) mm <i>inches</i>	Diameter (D) mm <i>inches</i>	Height (H) mm <i>inches</i>	Approx. Length (L) mm <i>inches</i>	Material
# KW0600-2200-C45	6.00 <i>0.236</i>	22.00 <i>0.866</i>	9.0 <i>0.354</i>	21.63 <i>0.852</i>	C45 Carbon Steel
# KW0600-2200-C	6.00 <i>0.236</i>	22.00 <i>0.866</i>	9.0 <i>0.354</i>	21.63 <i>0.852</i>	Carbon Steel (Grade Unspecified)
# KW0600-2500-C	6.00 <i>0.236</i>	25.00 <i>0.984</i>	10.0 <i>0.394</i>	24.49 <i>0.964</i>	Carbon Steel (Grade Unspecified)
# KW0600-2500-C45	6.00 <i>0.236</i>	25.00 <i>0.984</i>	10.0 <i>0.394</i>	24.49 <i>0.964</i>	C45 Carbon Steel
# KW0600-2800-C	6.00 <i>0.236</i>	28.00 <i>1.102</i>	11.0 <i>0.433</i>	27.35 <i>1.077</i>	Carbon Steel (Grade Unspecified)
# KW0600-2800-C45	6.00 <i>0.236</i>	28.00 <i>1.102</i>	11.0 <i>0.433</i>	27.35 <i>1.077</i>	C45 Carbon Steel
# KW0600-3200-C45	6.00 <i>0.236</i>	32.00 <i>1.260</i>	13.0 <i>0.512</i>	31.42 <i>1.237</i>	C45 Carbon Steel
# KW0635-1905-Z	6.35 <i>0.250</i>	19.05 <i>0.750</i>	-	18.67 <i>0.735</i>	Zinc Plated 1035 Steel
# KW0635-2223-CS	6.35 <i>0.250</i>	22.23 <i>0.875</i>	-	21.78 <i>0.857</i>	Carbon Steel (Grade Unspecified)

Indicates item not stocked at time of printing - Please enquire for lead time

E&OE Pricing and all details subject to change without notice - Copyright Miniature Bearings Australia Pty Ltd

MBA Size Listings are a guide to sizes only and must not be solely relied on for critical design information.

Keys - Woodruff

Part Number	Thickness (S) mm <i>inches</i>	Diameter (D) mm <i>inches</i>	Height (H) mm <i>inches</i>	Approx. Length (L) mm <i>inches</i>	Material
# KW0635-2540-3	6.35 <i>0.250</i>	25.40 <i>1.000</i>	11.1 <i>0.437</i>	24.89 <i>0.980</i>	303 Stainless Steel
# KW0635-2540-Z	6.35 <i>0.250</i>	25.40 <i>1.000</i>	-	24.89 <i>0.980</i>	Zinc Plated 1035 Steel
# KW0635-2540-6	6.35 <i>0.250</i>	25.40 <i>1.000</i>	-	24.89 <i>0.980</i>	316 Stainless Steel
# KW0635-2540-C	6.35 <i>0.250</i>	25.40 <i>1.000</i>	-	24.89 <i>0.980</i>	Carbon Steel
# KW0635-2858-Z	6.35 <i>0.250</i>	28.58 <i>1.125</i>	-	28.00 <i>1.102</i>	Zinc Plated 1035 Steel
# KW0635-3175-Z	6.35 <i>0.250</i>	31.75 <i>1.250</i>	-	31.12 <i>1.225</i>	Zinc Plated 1035 Steel
# KW0635-3493-Z	6.35 <i>0.250</i>	34.93 <i>1.375</i>	-	34.23 <i>1.348</i>	Zinc Plated 1035 Steel
# KW0635-3810-Z	6.35 <i>0.250</i>	38.10 <i>1.500</i>	-	37.34 <i>1.470</i>	Zinc Plated 1035 Steel
# KW0700-2500-C45	7.00 <i>0.276</i>	25.00 <i>0.984</i>	10.0 <i>0.394</i>	24.49 <i>0.964</i>	C45 Carbon Steel
# KW0794-2540-Z	7.94 <i>0.313</i>	25.40 <i>1.000</i>	-	24.89 <i>0.980</i>	Zinc Plated 1035 Steel

Indicates item not stocked at time of printing - Please enquire for lead time

E&OE Pricing and all details subject to change without notice - Copyright Miniature Bearings Australia Pty Ltd

MBA Size Listings are a guide to sizes only and must not be solely relied on for critical design information.

Keys - Woodruff

Part Number	Thickness (S) mm <i>inches</i>	Diameter (D) mm <i>inches</i>	Height (H) mm <i>inches</i>	Approx. Length (L) mm <i>inches</i>	Material
# KW0794-2858-Z	7.94 <i>0.313</i>	28.58 <i>1.125</i>	-	28.00 <i>1.102</i>	Zinc Plated 1035 Steel
# KW0794-3175-6	7.94 <i>0.313</i>	31.75 <i>1.250</i>	-	31.12 <i>1.225</i>	316 Stainless Steel
# KW0794-3175-C	7.94 <i>0.313</i>	31.75 <i>1.250</i>	-	31.12 <i>1.225</i>	Carbon Steel
# KW0794-3175-Z	7.94 <i>0.313</i>	31.75 <i>1.250</i>	-	31.12 <i>1.225</i>	Zinc Plated 1035 Steel
# KW0794-3493-Z	7.94 <i>0.313</i>	34.93 <i>1.375</i>	-	34.23 <i>1.348</i>	Zinc Plated 1035 Steel
# KW0794-3810-Z	7.94 <i>0.313</i>	38.10 <i>1.500</i>	-	37.34 <i>1.470</i>	Zinc Plated 1035 Steel
# KW0800-2200-C45	8.00 <i>0.315</i>	22.00 <i>0.866</i>	9.0 <i>0.354</i>	21.63 <i>0.852</i>	C45 Carbon Steel
# KW0800-2800-C	8.00 <i>0.315</i>	28.00 <i>1.102</i>	11.0 <i>0.433</i>	27.35 <i>1.077</i>	Carbon Steel (Grade Unspecified)
# KW0800-2800-C45	8.00 <i>0.315</i>	28.00 <i>1.102</i>	11.0 <i>0.433</i>	27.35 <i>1.077</i>	C45 Carbon Steel
# KW0800-3200-C45	8.00 <i>0.315</i>	32.00 <i>1.260</i>	13.0 <i>0.512</i>	31.42 <i>1.237</i>	C45 Carbon Steel

Indicates item not stocked at time of printing - Please enquire for lead time

E&OE Pricing and all details subject to change without notice - Copyright Miniature Bearings Australia Pty Ltd

MBA Size Listings are a guide to sizes only and must not be solely relied on for critical design information.

Keys - Woodruff

Part Number	Thickness (S) mm <i>inches</i>	Diameter (D) mm <i>inches</i>	Height (H) mm <i>inches</i>	Approx. Length (L) mm <i>inches</i>	Material
# KW0800-3200-C	8.00 <i>0.315</i>	32.00 <i>1.260</i>	13.0 <i>0.512</i>	31.43 <i>1.237</i>	Carbon Steel (Grade Unspecified)
# KW0800-3800-C45	8.00 <i>0.315</i>	38.00 <i>1.496</i>	15.0 <i>0.591</i>	37.15 <i>1.463</i>	C45 Carbon Steel
# KW0800-4500-C45	8.00 <i>0.315</i>	45.00 <i>1.772</i>	16.0 <i>0.630</i>	43.08 <i>1.696</i>	C45 Carbon Steel
# KW0953-3175-Z	9.53 <i>0.375</i>	31.75 <i>1.250</i>	-	31.12 <i>1.225</i>	Zinc Plated 1035 Steel
# KW0953-3810-3	9.53 <i>0.375</i>	38.10 <i>1.500</i>	16.3 <i>0.642</i>	37.34 <i>1.470</i>	303 Stainless Steel
# KW0953-3810-6	9.53 <i>0.375</i>	38.10 <i>1.500</i>	16.3 <i>0.642</i>	37.34 <i>1.470</i>	316 Stainless Steel
# KW0953-3810-C	9.53 <i>0.375</i>	38.10 <i>1.500</i>	16.3 <i>0.642</i>	37.34 <i>1.470</i>	Carbon Steel
# KW1000-2800-C45	10.00 <i>0.394</i>	28.00 <i>1.102</i>	11.0 <i>0.433</i>	27.35 <i>1.077</i>	C45 Carbon Steel
# KW1000-3200-C	10.00 <i>0.394</i>	32.00 <i>1.260</i>	13.0 <i>0.512</i>	31.43 <i>1.237</i>	Carbon Steel (Grade Unspecified)
# KW1000-3200-C45	10.00 <i>0.394</i>	32.00 <i>1.260</i>	13.0 <i>0.512</i>	31.42 <i>1.237</i>	C45 Carbon Steel

Indicates item not stocked at time of printing - Please enquire for lead time

E&OE Pricing and all details subject to change without notice - Copyright Miniature Bearings Australia Pty Ltd

MBA Size Listings are a guide to sizes only and must not be solely relied on for critical design information.

Keys - Woodruff

Part Number	Thickness (S) mm <i>inches</i>	Diameter (D) mm <i>inches</i>	Height (H) mm <i>inches</i>	Approx. Length (L) mm <i>inches</i>	Material
# KW1000-4500-C45	10.00 <i>0.394</i>	45.00 <i>1.772</i>	16.0 <i>0.630</i>	43.08 <i>1.696</i>	C45 Carbon Steel
# KW1000-4500-C	10.00 <i>0.394</i>	45.00 <i>1.772</i>	16.0 <i>0.630</i>	43.08 <i>1.696</i>	Carbon Steel (Grade Unspecified)

Indicates item not stocked at time of printing - Please enquire for lead time

E&OE Pricing and all details subject to change without notice - Copyright Miniature Bearings Australia Pty Ltd

MBA Size Listings are a guide to sizes only and must not be solely relied on for critical design information.



DISTRIBUTED BY

Ask us to put your name and address here

<http://www.minibearings.com.au/product>

Ph +61 7 3245 7977

Fax +61 7 3245 1017

Catalogue requests to catalogues@minibearings.com.au

