

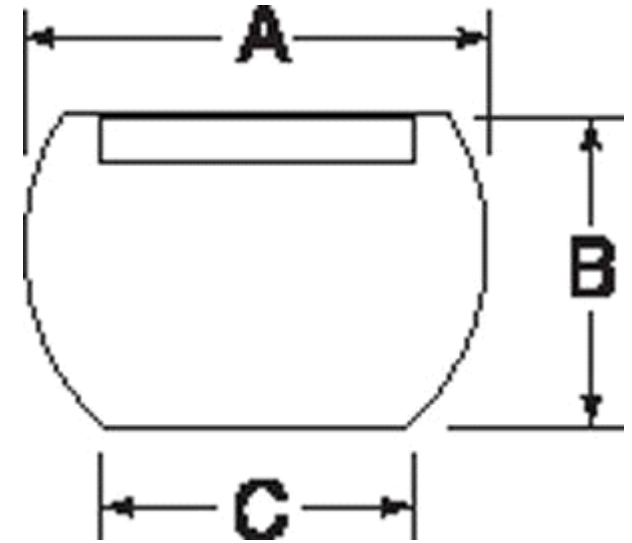


# MBA

## Knobs - Ball - Threaded - Recessed Top

Brass threaded insert

Phenolic



### Knobs - Ball - Threaded - Recessed Top

Part Number	Diameter (A) mm	Height (B) mm	Top Diameter (C) mm	Thread Size	Thread Depth mm
	<i>inches</i>	<i>inches</i>	<i>inches</i>		<i>inches</i>
# DK-770RS	47.63 <i>1.875</i>	37.31 <i>1.469</i>	19.05 <i>0.750</i>	1/2-13	15.88 <i>0.625</i>
# DK-765RS	47.63 <i>1.875</i>	37.31 <i>1.469</i>	19.05 <i>0.750</i>	3/8-24	12.70 <i>0.500</i>
# DK-760RS	47.63 <i>1.875</i>	37.31 <i>1.469</i>	19.05 <i>0.750</i>	3/8-16	12.70 <i>0.500</i>

# Indicates item not stocked at time of printing - Please enquire for lead time

E&OE Pricing and all details subject to change without notice - Copyright Miniature Bearings Australia Pty Ltd

MBA Size Listings are a guide to sizes only and must not be solely relied on for critical design information.



DISTRIBUTED BY

Ask us to put your name and address here

<http://www.minibearings.com.au/product>

Ph +61 7 3245 7977

Fax +61 7 3245 1017

Catalogue requests to [catalogues@minibearings.com.au](mailto:catalogues@minibearings.com.au)

