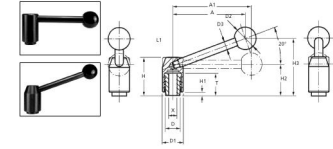




# MBA

## Levers - Tension - 0 Degrees



Steel Parts: Quality class 5.8.

Ball Knob: Black plastic.

Surface finish: Burnished.

Hub machined and bored to ISO fit H7.

Choose from 0 or 20 degrees.

### Levers - Tension - 0 Degrees

Part Number	Internal Thread Size mm <i>inches</i>	Angle DEG	Centre Ball Width mm <i>inches</i>	BaseDiameter (D / D1) mm <i>inches</i>	Shaft Diameter (D3) mm <i>inches</i>	Ball Diameter (D2) mm <i>inches</i>	Thread Length mm <i>inches</i>	Base Height (H / H1) mm <i>inches</i>	Centre Ball Height (H2 / H3) mm <i>inches</i>	Material
# TL01IM8	M8	0	87.00 <i>3.425</i>	17 / 24 <i>0.669</i>	10.00 <i>0.394</i>	25.00 <i>0.984</i>	23.00 <i>0.906</i>	44 / 4 <i>1.732</i>	36.50 <i>1.437</i>	Steel and Plastic Ball
# TL21IM8	M8	20	81.00 <i>3.189</i>	17 / 24 <i>0.669</i>	10.00 <i>0.394</i>	25.00 <i>0.984</i>	23.00 <i>0.906</i>	44 / 4 <i>1.732</i>	64.00 <i>2.520</i>	Steel and Plastic Ball

# Indicates item not stocked at time of printing - Please enquire for lead time

E&OE Pricing and all details subject to change without notice - Copyright Miniature Bearings Australia Pty Ltd

MBA Size Listings are a guide to sizes only and must not be solely relied on for critical design information.

## Levers - Tension - 0 Degrees

Part Number	Internal Thread Size mm <i>inches</i>	Angle DEG	Centre Ball Width mm <i>inches</i>	BaseDiameter (D / D1) mm <i>inches</i>	Shaft Diameter (D3) mm <i>inches</i>	Ball Diameter (D2) mm <i>inches</i>	Thread Length mm <i>inches</i>	Base Height (H / H1) mm <i>inches</i>	Centre Ball Height (H2 / H3) mm <i>inches</i>	Material
# TL01IM10	M10	0	87.00 <i>3.425</i>	17 / 24 <i>0.688</i>	10.00 <i>0.394</i>	25.00 <i>0.984</i>	23.00 <i>0.906</i>	44 / 4 <i>1.732</i>	36.50 <i>1.437</i>	Steel and Plastic Ball
# TL02IM10	M10	0	107.00 <i>4.213</i>	20 / 28 <i>0.787</i>	11.00 <i>0.433</i>	30.00 <i>1.181</i>	26.00 <i>1.024</i>	51 / 5 <i>2.008</i>	41.50 <i>1.634</i>	Steel and Plastic Ball
# TL21IM10	M10	20	81.00 <i>3.189</i>	17 / 24 <i>0.688</i>	10.00 <i>0.394</i>	25.00 <i>0.984</i>	23.00 <i>0.906</i>	44 / 4 <i>1.732</i>	64.00 <i>2.520</i>	Steel and Plastic Ball
# TL22IM10	M10	20	99.00 <i>3.898</i>	20 / 28 <i>0.787</i>	11.00 <i>0.433</i>	30.00 <i>1.181</i>	26.00 <i>1.024</i>	51 / 5 <i>2.008</i>	76.00 <i>2.992</i>	Steel and Plastic Ball
# TL02IM12	M12	0	107.00 <i>4.213</i>	20 / 28 <i>0.787</i>	11.00 <i>0.433</i>	30.00 <i>1.181</i>	26.00 <i>1.024</i>	51 / 5 <i>2.008</i>	41.50 <i>1.634</i>	Steel and Plastic Ball
# TL03IM12	M12	0	128.00 <i>5.039</i>	24 / 33 <i>0.945</i>	12.00 <i>0.472</i>	32.00 <i>1.260</i>	30.00 <i>1.181</i>	57 / 5 <i>2.244</i>	46.00 <i>1.811</i>	Steel and Plastic Ball
# TL22IM12	M12	20	99.00 <i>3.898</i>	20 / 28 <i>0.787</i>	11.00 <i>0.433</i>	30.00 <i>1.181</i>	26.00 <i>1.024</i>	51 / 5 <i>2.008</i>	76.00 <i>2.992</i>	Steel and Plastic Ball
# TL23IM12	M12	20	118.00 <i>4.646</i>	24 / 33 <i>0.945</i>	12.00 <i>0.472</i>	32.00 <i>1.260</i>	30.00 <i>1.181</i>	57 / 5 <i>2.244</i>	87.00 <i>3.425</i>	Steel and Plastic Ball

# Indicates item not stocked at time of printing - Please enquire for lead time

E&OE Pricing and all details subject to change without notice - Copyright Miniature Bearings Australia Pty Ltd

MBA Size Listings are a guide to sizes only and must not be solely relied on for critical design information.

## Levers - Tension - 0 Degrees

Part Number	Internal Thread Size mm <i>inches</i>	Angle DEG	Centre Ball Width mm <i>inches</i>	BaseDiameter (D / D1) mm <i>inches</i>	Shaft Diameter (D3) mm <i>inches</i>	Ball Diameter (D2) mm <i>inches</i>	Thread Length mm <i>inches</i>	Base Height (H / H1) mm <i>inches</i>	Centre Ball Height (H2 / H3) mm <i>inches</i>	Material
# TL03IM16	M16	0	128.00 <i>5.039</i>	24 / 33 <i>0.945</i>	12.00 <i>0.472</i>	32.00 <i>1.260</i>	30.00 <i>1.181</i>	57 / 5 <i>2.244</i>	46.00 <i>1.811</i>	Steel and Plastic Ball
# TL04IM16	M16	0	147.00 <i>5.787</i>	30 / 41 <i>1.181</i>	14.00 <i>0.551</i>	37.00 <i>1.457</i>	35.00 <i>1.378</i>	67 / 6 <i>2.638</i>	55.00 <i>2.165</i>	Steel and Plastic Ball
# TL23IM16	M16	20	118.00 <i>4.646</i>	24 / 33 <i>0.945</i>	12.00 <i>0.472</i>	32.00 <i>1.260</i>	30.00 <i>1.181</i>	57 / 5 <i>2.244</i>	87.00 <i>3.425</i>	Steel and Plastic Ball
# TL24IM16	M16	20	136.00 <i>5.354</i>	30 / 41 <i>1.181</i>	14.00 <i>0.551</i>	37.00 <i>1.457</i>	35.00 <i>1.378</i>	67 / 6 <i>2.638</i>	100.00 <i>3.937</i>	Steel and Plastic Ball
# TL04IM20	M20	0	147.00 <i>5.787</i>	30 / 41 <i>1.181</i>	14.00 <i>0.551</i>	37.00 <i>1.457</i>	35.00 <i>1.378</i>	67 / 6 <i>2.638</i>	55.00 <i>2.165</i>	Steel and Plastic Ball
# TL24IM20	M20	20	136.00 <i>5.354</i>	30 / 41 <i>1.181</i>	14.00 <i>0.551</i>	37.00 <i>1.457</i>	35.00 <i>1.378</i>	67 / 6 <i>2.638</i>	100.00 <i>3.937</i>	Steel and Plastic Ball
# TL04IM24	M24	0	147.00 <i>5.787</i>	30 / 41 <i>1.181</i>	14.00 <i>0.551</i>	37.00 <i>1.457</i>	35.00 <i>1.378</i>	67 / 6 <i>2.638</i>	55.00 <i>2.165</i>	Steel and Plastic Ball
# TL24IM24	M24	20	136.00 <i>5.354</i>	30 / 41 <i>1.181</i>	14.00 <i>0.551</i>	37.00 <i>1.457</i>	35.00 <i>1.378</i>	67 / 6 <i>2.638</i>	100.00 <i>3.937</i>	Steel and Plastic Ball

# Indicates item not stocked at time of printing - Please enquire for lead time

E&OE Pricing and all details subject to change without notice - Copyright Miniature Bearings Australia Pty Ltd

MBA Size Listings are a guide to sizes only and must not be solely relied on for critical design information.



DISTRIBUTED BY

Ask us to put your name and address here

<http://www.minibearings.com.au/product>

Ph +61 7 3245 7977

Fax +61 7 3245 1017

Catalogue requests to [catalogues@minibearings.com.au](mailto:catalogues@minibearings.com.au)
