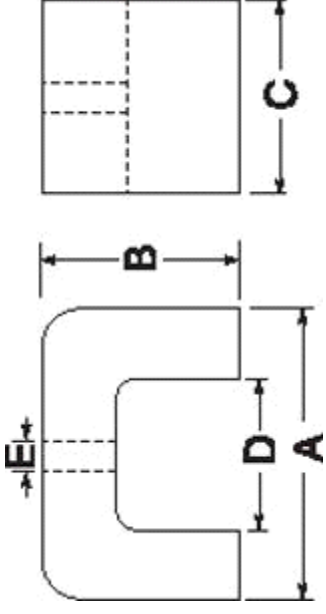




MBA

Magnets - Alcomax - Power

Supplied with keeper



Magnets - Alcomax - Power

Part Number	A mm <i>inches</i>	B mm <i>inches</i>	C mm <i>inches</i>	D mm <i>inches</i>	E mm <i>inches</i>	Pull kg
# 811RS	30.16 <i>1.187</i>	19.05 <i>0.750</i>	19.05 <i>0.750</i>	14.29 <i>0.563</i>	3.96 <i>0.156</i>	4.46
# 812RS	39.69 <i>1.563</i>	25.4 <i>1.000</i>	25.4 <i>1.000</i>	19.05 <i>0.750</i>	4.76 <i>0.187</i>	7.59
# 813RS	44.45 <i>1.750</i>	30.16 <i>1.187</i>	30.16 <i>1.187</i>	22.22 <i>0.875</i>	4.76 <i>0.187</i>	10.27

Indicates item not stocked at time of printing - Please enquire for lead time

E&OE Pricing and all details subject to change without notice - Copyright Miniature Bearings Australia Pty Ltd

MBA Size Listings are a guide to sizes only and must not be solely relied on for critical design information.

MBA

MINIATURE BEARINGS AUSTRALIA PTY LTD

ABN 94 069 113 800



DISTRIBUTED BY

Ask us to put your name and address here

<http://www.minibearings.com.au/product>

Ph +61 7 3245 7977

Fax +61 7 3245 1017

Catalogue requests to catalogues@minibearings.com.au

