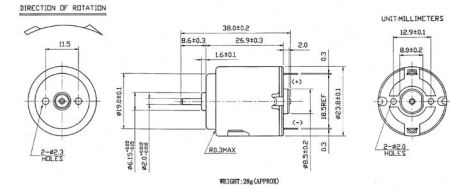




MBA

Motors - DC 26.9X23.8 mm



M-26 Series 1.5 to 24 VDC - 2500 to 15100 RPM.

See Datasheets in PDF format. Link at bottom of this page.

Direction of rotation (CW = Clockwise, ACW = Anticlockwise) when looking towards shaft.

This catalogue to be read in conjunction with information at <http://www.minibearings.com.au/ogue/tech/motors/>

Motors - DC 26.9X23.8 mm

Part Number	Body Diameter mm	Overall Length mm	Operating Voltage V	Nominal Voltage V	Shaft Size mm	Body Type	Current (No Load/Max Effic) amps	Speed (No Load/Max Efficiency) RPM	Direction	Torque (Max Effic/Stall) g-cm
M-26-2670-1.5V	23.800 <i>0.937</i>	38.000 <i>1.496</i>	1.5 ~ 3.0	1.5	2 x 6.9mm	Round	0.180 / 0.640	6300 / 5050	CW	10.00 / 50.00
M-26-18130-3.0V	23.800 <i>0.937</i>	38.000 <i>1.496</i>	1.5 ~ 4.5	3.0	2 x 6.9mm	Round	0.11 / 0.365	6900 / 5500	CW	9.92 / 48.00
M-26-2295-3V	23.800 <i>0.937</i>	38.000 <i>1.496</i>	1.5 ~ 4.5	3.0	2 x 6.9mm	Round	0.170 / 0.636	9400 / 3600	CW	13.40 / 70.00
M-26C-18130-4.5V	23.800 <i>0.937</i>	38.000 <i>1.496</i>	4.5 ~ 6.0	4.5	2 x 7.1mm	Round	0.160 / 0.530	9800 / 7750	CW	15.06 / 72.00

Indicates item not stocked at time of printing - Please enquire for lead time

E&OE Pricing and all details subject to change without notice - Copyright Miniature Bearings Australia Pty Ltd

MBA Size Listings are a guide to sizes only and must not be solely relied on for critical design information.

Motors - DC 26.9X23.8 mm

Part Number	Body Diameter mm	Overall Length mm	Operating Voltage V	Nominal Voltage V	Shaft Size mm	Body Type	Current (No Load/Max Effic) amps	Speed (No Load/Max Efficiency) RPM	Direction	Torque (Max Effic/Stall) g-cm
M-26C-2670-4.5V	23.800 <i>0.937</i>	38.000 <i>1.496</i>	4.5	4.5	2 x 7.1mm	Round	0.320 / 1.428	18300 / 15100	CW	21.70 / 125.00
M-26C-08450-12.0V	23.800 <i>0.937</i>	38.000 <i>1.496</i>	6.0 ~ 24.0	12.0	2 x 7.1mm	Round	0.060 / 0.115	7800 / 5800	CW	9.81 / 38.00
M-26C-10350-12.0V	23.800 <i>0.937</i>	38.000 <i>1.496</i>	6.0 ~ 12.0	12.0	2 x 7.1mm	Round	0.060 / 0.164	10000 / 8040	CW	13.00 / 66.00

Indicates item not stocked at time of printing - Please enquire for lead time

E&OE Pricing and all details subject to change without notice - Copyright Miniature Bearings Australia Pty Ltd

MBA Size Listings are a guide to sizes only and must not be solely relied on for critical design information.



DISTRIBUTED BY

Ask us to put your name and address here

<http://www.minibearings.com.au/product>

Ph +61 7 3245 7977

Fax +61 7 3245 1017

Catalogue requests to catalogues@minibearings.com.au
