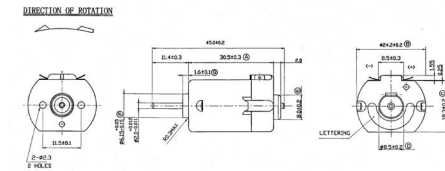




MBA

Motors - DC 30.5X24.2X18.3 mm



MF-28 Series - 1.5 to 24 VDC - 4470 to 13430 RPM.

See Datasheets in PDF format. Link at bottom of this page.

Direction of rotation (CW = Clockwise, ACW = Anticlockwise) when looking towards shaft.

This catalogue to be read in conjunction with information at <http://www.minibearings.com.au/ogue/tech/motors/>

Motors - DC 30.5X24.2X18.3 mm

Part Number	Body Diameter x Width mm	Overall Length mm	Operating Voltage V	Nominal Voltage V	Shaft Size mm	Body Type	Current (No Load/Max Effic) amps	Speed (No Load/Max Efficiency) RPM	Direction	Torque (Max Effic/Stall) g-cm
MF-28-2485-3.0V	24.2 x 18.3	45.000	1.5 ~ 3.0	3.0	2 x 9.7mm	Rounded with Flat top and bottom	0.125 / 0.602	8000 / 6650	CW	15.50 / 90.00
		1.772								
MF-28-2865-3.0V	24.2 x 18.3	45.000	1.5 ~ 3.0	3.0	2 x 9.7mm	Rounded with Flat top and bottom	0.170 / 0.892	10500 / 8800	CW	18.30 / 114.00
		1.772								

Indicates item not stocked at time of printing - Please enquire for lead time

E&OE Pricing and all details subject to change without notice - Copyright Miniature Bearings Australia Pty Ltd

MBA Size Listings are a guide to sizes only and must not be solely relied on for critical design information.

Motors - DC 30.5X24.2X18.3 mm

Part Number	Body Diameter x Width mm	Overall Length mm	Operating Voltage V	Nominal Voltage V	Shaft Size mm	Body Type	Current (No Load/Max Effic) amps	Speed (No Load/Max Efficiency) RPM	Direction	Torque (Max Effic/Stall) g-cm
MF-28CS-2865-4.5V	24.2 x 18.3	45.000	4.5	4.5	2 x 9.85mm	Rounded with Flat top and bottom	0.220 / 1.219	11600 / 9830	CW	35.20 / 72.00
		1.772								
MF-28C-2865-4.5V	24.2 x 18.3	45.000	4.5	4.5	2 x 9.85mm	Rounded with Flat top and bottom	0.200 / 1.183	15700 / 13430	CW	23.90 / 165.00
		1.772								
MF-28-20120-4.5V	24.2 x 18.3	45.000	3.0 ~ 4.5	4.5	2 x 9.7mm	Rounded with Flat top and bottom	0.090 / 0.453	8400 / 7000	CW	16.20 / 98.00
		1.772								
MF-28C-20120-4.5V	24.2 x 18.3	45.000	4.5 ~ 6.0	4.5	2 x 9.85mm	Rounded with Flat top and bottom	0.090 / 0.442	8600 / 7150	CW	16.60 / 98.00
		1.772								
MF-28-22100-4.5V	24.2 x 18.3	45.000	3.0 ~ 4.5	4.5	2 x 9.7mm	Rounded with Flat top and bottom	0.120 / 0.634	10000 / 8400	CW	19.10 / 120.00
		1.772								
MF-28C-10350-12.0V	24.2 x 18.3	45.000	9.0 ~ 24.0	12.0	2 x 9.85mm	Rounded with Flat top and bottom	0.035 / 0.139	7800 / 6230	CW	14.50 / 72.00
		1.772								
MF-28CS-10350-12.0V	24.2 x 18.3	45.000	12.0 ~ 24.0	12.0	2 x 9.85mm	Rounded with Flat top and bottom	0.035 / 0.139	5600 / 4470	CW	20.10 / 100.00
		1.772								

Indicates item not stocked at time of printing - Please enquire for lead time

E&OE Pricing and all details subject to change without notice - Copyright Miniature Bearings Australia Pty Ltd

MBA Size Listings are a guide to sizes only and must not be solely relied on for critical design information.

Motors - DC 30.5X24.2X18.3 mm

Part Number	Body Diameter x Width mm	Overall Length mm	Operating Voltage V	Nominal Voltage V	Shaft Size mm	Body Type	Current (No Load/Max Effic) amps	Speed (No Load/Max Efficiency) RPM	Direction	Torque (Max Effic/Stall) g-cm
MF-28C-14200-12.0V	24.2 x 18.3	45.000	6.0 ~ 12.0	12.0	2 x 9.85mm	Rounded with Flat top and bottom	0.070 / 0.355	13700 / 11440	CW	21.40 / 130.00
		1.772								
MF-28CS-14200-12.0V	24.2 x 18.3	45.000	6.0 ~ 12.0	12.0	2 x 9.85mm	Rounded with Flat top and bottom	0.065 / 0.342	10000 / 8400	CW	27.90 / 175.00
		1.772								
MF-28CS-18165-13.5V	24.2 x 18.3	45.000	6.0 ~ 15.0	13.5	2 x 9.85mm	Rounded with Flat top and bottom	0.100 / 0.604	14000 / 12000	CW	39.80 / 230.00
		1.772								

Indicates item not stocked at time of printing - Please enquire for lead time

E&OE Pricing and all details subject to change without notice - Copyright Miniature Bearings Australia Pty Ltd

MBA Size Listings are a guide to sizes only and must not be solely relied on for critical design information.



DISTRIBUTED BY

Ask us to put your name and address here

<http://www.minibearings.com.au/product>

Ph +61 7 3245 7977

Fax +61 7 3245 1017

Catalogue requests to catalogues@minibearings.com.au
