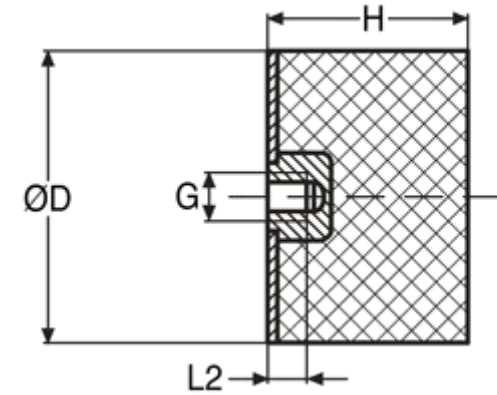




MBA

Mounts - Cylindrical - Female to Blank

Rubber hardness 60 Duro Standard unless otherwise noted



This catalogue to be read in conjunction with information at
http://www.minibearings.com.au/ogue/tech/mounts/cylindrical_mounts_neoprene.pdf
http://www.minibearings.com.au/ogue/tech/mounts/cylindrical_mounts_urethane.pdf
http://www.minibearings.com.au/ogue/tech/mounts/cylindrical_mounts_rubber.pdf

Mounts - Cylindrical - Female to Blank

Part Number	Nom. Body Dia. (D) mm	Body Length (H) mm	Configuration	Compression Load kgf (lbs)	Shear Load kgf (lbs)	Thread Size	Thread Depth (L2) mm	Material	Features	Other Information
	<i>inches</i>	<i>inches</i>					<i>inches</i>			
# CM07.0x08-4-40-FBL	7	8.1		0.13 (0.3)	0.04 (0.1)	4-40 UNC	- / 2.8	Urethane / Plated Steel	1	
	<i>0.276</i>	<i>0.319</i>								
# CM07.0x08-4-40-FBH	7	8.1		0.89 (2.0)	0.36 (0.8)	4-40 UNC	- / 2.8	Urethane / Plated Steel	1	
	<i>0.276</i>	<i>0.319</i>								
# CM10.0x10-M4-FB	10	10		4.5 (10.08)		M4	4	Rubber / Steel	3	
	<i>0.394</i>	<i>0.394</i>					<i>0.157</i>			

Indicates item not stocked at time of printing - Please enquire for lead time
 E&OE Pricing and all details subject to change without notice - Copyright Miniature Bearings Australia Pty Ltd
 MBA Size Listings are a guide to sizes only and must not be solely relied on for critical design information.

Mounts - Cylindrical - Female to Blank

Part Number	Nom. Body Dia. (D) mm	Body Length (H) mm	Configuration	Compression Load kgf (lbs)	Shear Load kgf (lbs)	Thread Size	Thread Depth (L2) mm	Material	Features	Other Information
	<i>inches</i>	<i>inches</i>					<i>inches</i>			
# CM10.0x15-M4-FB	10 <i>0.394</i>	15 <i>0.591</i>		4 (8.96)		M4	4 <i>0.157</i>	Rubber / Steel	3	
# CM10.3x13-6-32-FBH	10.3 <i>0.406</i>	12.7 <i>0.500</i>		1.79 (4.0)	0.89 (2.0)	6-32 UNC	- / 4.1	Urethane / Plated Steel	1	
# CM10.3x13-6-32-FBL	10.3 <i>0.406</i>	12.7 <i>0.500</i>		0.27 (0.6)	0.13 (0.3)	6-32 UNC	- / 4.1	Urethane / Plated Steel	1	
# CM10.3x13-8-32-FBH	10.3 <i>0.406</i>	12.7 <i>0.500</i>		1.79 (4.0)	0.89 (2.0)	8-32 UNC	- / 4.1	Urethane / Plated Steel	1	
# CM10.3x13-8-32-FBL	10.3 <i>0.406</i>	12.7 <i>0.500</i>		0.27 (0.6)	0.13 (0.3)	8-32 UNC	- / 4.1	Urethane / Plated Steel	1	
# CM15.0x15-M4-FB	15 <i>0.591</i>	15 <i>0.591</i>		8 (17.92)		M4	5 <i>0.197</i>	Rubber / Steel	3	
CM16.0x16-14-FB	16 <i>0.630</i>	16 <i>0.630</i>		5.36 (12.0)	1.56 (3.5)	1/4 UNC (20 TPI)	- / 6.6	Urethane / Plated Steel	1	
# CM20.0x15-M6-FB	20 <i>0.787</i>	15 <i>0.591</i>		18 (40.32)		M6	6 <i>0.236</i>	Rubber / Steel	3	
# CM20.0x20-M6-FB	20 <i>0.787</i>	20 <i>0.787</i>		18 (40.32)		M6	6 <i>0.236</i>	Rubber / Steel	3	

Indicates item not stocked at time of printing - Please enquire for lead time

E&OE Pricing and all details subject to change without notice - Copyright Miniature Bearings Australia Pty Ltd

MBA Size Listings are a guide to sizes only and must not be solely relied on for critical design information.

Mounts - Cylindrical - Female to Blank

Part Number	Nom. Body Dia. (D) mm	Body Length (H) mm	Configuration	Compression Load kgf (lbs)	Shear Load kgf (lbs)	Thread Size	Thread Depth (L2) mm	Material	Features	Other Information
	<i>inches</i>	<i>inches</i>					<i>inches</i>			
# CM25.0x10-M6-FB	25 <i>0.984</i>	10 <i>0.394</i>		41 (91.84)		M6	6 <i>0.236</i>	Rubber / Steel	3	
# CM25.0x19-516-FB	25 <i>0.984</i>	19 <i>0.748</i>		20.09 (45.0)	4.46 (10.0)	5/16	- / 7.4	Urethane / Plated Steel	1	
# CM25.0x20-M6-FB	25 <i>0.984</i>	20 <i>0.787</i>		29 (64.96)		M6	6 <i>0.236</i>	Rubber / Steel	3	
# CM25.0x30-M6-FB	25 <i>0.984</i>	30 <i>1.181</i>		25 (56)		M6	6 <i>0.236</i>	Rubber / Steel	3	
# CM30.0x15-M8-FB	30 <i>1.181</i>	15 <i>0.591</i>		48 (107.52)		M8	8 <i>0.315</i>	Rubber / Steel	3	
# CM30.0x17-M8-FB	30 <i>1.181</i>	17 <i>0.669</i>		45 (100)		M8	8 <i>0.315</i>	Rubber / Steel	3	
# CM30.0x20-M8-FB	30 <i>1.181</i>	20 <i>0.787</i>		45 (100.8)		M8	8 <i>0.315</i>	Rubber / Steel	3	
# CM30.0x30-M8-FB	30 <i>1.181</i>	30 <i>1.181</i>		41 (91.84)		M8	8 <i>0.315</i>	Rubber / Steel	3	
# CM40.0x30-M8-FB	40 <i>1.575</i>	30 <i>1.181</i>		85 (190.4)		M8	8 <i>0.315</i>	Rubber / Steel	3	
# CM50.0x20-M10-FB	50 <i>1.969</i>	20 <i>0.787</i>		154 (346)		M10	10 <i>0.394</i>	Rubber / Steel	3	

Indicates item not stocked at time of printing - Please enquire for lead time

E&OE Pricing and all details subject to change without notice - Copyright Miniature Bearings Australia Pty Ltd

MBA Size Listings are a guide to sizes only and must not be solely relied on for critical design information.

Mounts - Cylindrical - Female to Blank

Part Number	Nom. Body Dia. (D) mm	Body Length (H) mm	Configuration	Compression Load kgf (lbs)	Shear Load kgf (lbs)	Thread Size	Thread Depth (L2) mm	Material	Features	Other Information
	<i>inches</i>	<i>inches</i>					<i>inches</i>			
# CM50.0x30-M10-FB	50 <i>1.969</i>	30 <i>1.181</i>		119 (266.56)		M10	10 <i>0.394</i>	Rubber / Steel	3	
# CM50.0x40-M10-FB	50 <i>1.969</i>	40 <i>1.575</i>		114 (255.36)		M10	10 <i>0.394</i>	Rubber / Steel	3	
# CM50.0x50-M10-FB	50 <i>1.969</i>	50 <i>1.969</i>		118 (264.32)		M10	10 <i>0.394</i>	Rubber / Steel	3	
# CM75.0x25-M12-FB	75 <i>2.953</i>	25 <i>0.984</i>		368 (824.32)		M12	12 <i>0.472</i>	Rubber / Steel	3	
# CM75.0x55-M12-FB	75 <i>2.953</i>	55 <i>2.165</i>		301 (674.24)		M12	12 <i>0.472</i>	Rubber / Steel	3	

Indicates item not stocked at time of printing - Please enquire for lead time

E&OE Pricing and all details subject to change without notice - Copyright Miniature Bearings Australia Pty Ltd

MBA Size Listings are a guide to sizes only and must not be solely relied on for critical design information.



DISTRIBUTED BY

Ask us to put your name and address here

<http://www.minibearings.com.au/product>

Ph +61 7 3245 7977

Fax +61 7 3245 1017

Catalogue requests to catalogues@minibearings.com.au

