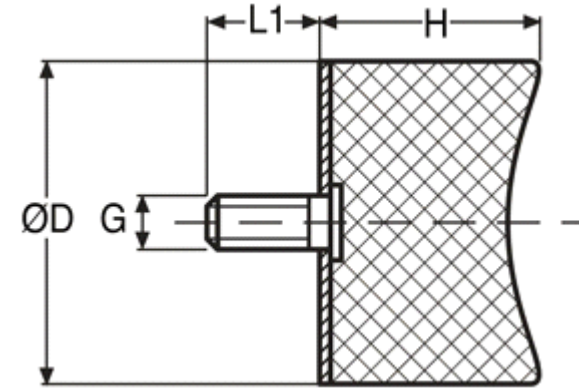




# MBA

## Mounts - Cylindrical - Male to Blank



Rubber hardness 60 Duro Standard unless otherwise noted

This catalogue to be read in conjunction with information at  
[http://www.minibearings.com.au/ogue/tech/mounts/cylindrical\\_mounts\\_neoprene.pdf](http://www.minibearings.com.au/ogue/tech/mounts/cylindrical_mounts_neoprene.pdf)  
[http://www.minibearings.com.au/ogue/tech/mounts/cylindrical\\_mounts\\_urethane.pdf](http://www.minibearings.com.au/ogue/tech/mounts/cylindrical_mounts_urethane.pdf)  
[http://www.minibearings.com.au/ogue/tech/mounts/cylindrical\\_mounts\\_rubber.pdf](http://www.minibearings.com.au/ogue/tech/mounts/cylindrical_mounts_rubber.pdf)

### Mounts - Cylindrical - Male to Blank

Part Number	Nom. Body Dia. (D) mm	Body Length (H) mm	Configuration	Compression Load kgf (lbs)	Shear Load kgf (lbs)	Thread Size	Thread Length (L1) mm	Material	Features	Other Information
	<i>inches</i>	<i>inches</i>					<i>inches</i>			
# CM07.0x08-4-40-MBL	7	8.1		0.22 (0.5)	0.09 (0.2)	4-40 UNC	5.1	Urethane / Plated Steel	1	
	<i>0.276</i>	<i>0.319</i>					<i>0.201</i>			
# CM07.0x08-4-40-MBH	7	8.1		1.79 (4.0)	0.67 (1.5)	4-40 UNC	5.1	Urethane / Plated Steel	1	
	<i>0.276</i>	<i>0.319</i>					<i>0.201</i>			
CM10.0x10-M4-MB	10	10		5.4 (12.096)		M4	10	Rubber / Steel	3	
	<i>0.394</i>	<i>0.394</i>					<i>0.394</i>			

# Indicates item not stocked at time of printing - Please enquire for lead time  
 E&OE Pricing and all details subject to change without notice - Copyright Miniature Bearings Australia Pty Ltd  
 MBA Size Listings are a guide to sizes only and must not be solely relied on for critical design information.

## Mounts - Cylindrical - Male to Blank

Part Number	Nom. Body Dia. (D) mm	Body Length (H) mm	Configuration	Compression Load kgf (lbs)	Shear Load kgf (lbs)	Thread Size	Thread Length (L1) mm	Material	Features	Other Information
	<i>inches</i>	<i>inches</i>					<i>inches</i>			
# CM10.3x13-6-32-MBH	10.3 <i>0.406</i>	12.7 <i>0.500</i>		3.57 (8.0)	1.34 (3.0)	6-32 UNC	9.5 <i>0.374</i>	Urethane / Plated Steel	1	
# CM10.3x13-6-32-MBL	10.3 <i>0.406</i>	12.7 <i>0.500</i>		0.45 (1.0)	0.18 (0.4)	6-32 UNC	9.5 <i>0.374</i>	Urethane / Plated Steel	1	
# CM10.3x13-8-32-MBH	10.3 <i>0.406</i>	12.7 <i>0.500</i>		3.57 (8.0)	1.34 (3.0)	8-32 UNC	9.5 <i>0.374</i>	Urethane / Plated Steel	1	
# CM10.3x13-8-32-MBL	10.3 <i>0.406</i>	12.7 <i>0.500</i>		0.45 (1.0)	0.18 (0.4)	8-32 UNC	9.5 <i>0.374</i>	Urethane / Plated Steel	1	
# CM15.0x08-M4-MB	15 <i>0.591</i>	8 <i>0.315</i>		14 (31.36)		M4	10 <i>0.394</i>	Rubber / Steel	3	
# CM15.0x10-M4-MB	15 <i>0.591</i>	10 <i>0.394</i>		12 (26.88)		M4	10 <i>0.394</i>	Rubber / Steel	3	
# CM15.0x15-M4-MB	15 <i>0.591</i>	15 <i>0.591</i>		11 (24.64)		M4	10 <i>0.394</i>	Rubber / Steel	3	
# CM16.0x16-14-MB	16 <i>0.630</i>	16 <i>0.630</i>		8.93 (20.0)	2.23 (5.0)	1/4 UNC (20 TPI)	12.7 <i>0.500</i>	Urethane / Plated Steel	1	
# CM20.0x15-M6-MB	20 <i>0.787</i>	15 <i>0.591</i>		22 (49.28)		M6	18 <i>0.709</i>	Rubber / Steel	3	

# Indicates item not stocked at time of printing - Please enquire for lead time

E&OE Pricing and all details subject to change without notice - Copyright Miniature Bearings Australia Pty Ltd

MBA Size Listings are a guide to sizes only and must not be solely relied on for critical design information.

## Mounts - Cylindrical - Male to Blank

Part Number	Nom. Body Dia. (D) mm	Body Length (H) mm	Configuration	Compression Load kgf (lbs)	Shear Load kgf (lbs)	Thread Size	Thread Length (L1) mm	Material	Features	Other Information
	<i>inches</i>	<i>inches</i>					<i>inches</i>			
# CM20.0x20-M6-MB	20 <i>0.787</i>	20 <i>0.787</i>		21 (47.04)		M6	18 <i>0.709</i>	Rubber / Steel	3	
# CM20.0x25-M6-MB	20 <i>0.787</i>	25 <i>0.984</i>		20 (44.8)		M6	18 <i>0.709</i>	Rubber / Steel	3	
# CM25.0x10-M6-MB	25 <i>0.984</i>	10 <i>0.394</i>		48 (107.52)		M6	18 <i>0.709</i>	Rubber / Steel	3	
# CM25.0x15-M6--MB	25 <i>0.984</i>	15 <i>0.591</i>		37 (82.88)		M6	18 <i>0.709</i>	Rubber / Steel	3	
# CM25.0x19-516-MB	25 <i>0.984</i>	19 <i>0.748</i>		22.32 (50.0)	5.80 (13.0)	5/16	15.9 <i>0.626</i>	Urethane / Plated Steel	1	
# CM25.0x20-M6-MB	25 <i>0.984</i>	20 <i>0.787</i>		34 (76.16)		M6	18 <i>0.709</i>	Rubber / Steel	3	
# CM25.0x25-M6-MB	25 <i>0.984</i>	25 <i>0.984</i>		31 (69.44)		M6	18 <i>0.709</i>	Rubber / Steel	3	
# CM25.0x30-M6-MB	25 <i>0.984</i>	30 <i>1.181</i>		28 (62.72)		M6	18 <i>0.709</i>	Rubber / Steel	3	
# CM30.0x20-M8-MB	30 <i>1.181</i>	20 <i>0.787</i>		52 (116.48)		M8	20 <i>0.787</i>	Rubber / Steel	3	
# CM30.0x25-M8-MB	30 <i>1.181</i>	25 <i>0.984</i>		49 (109.76)		M8	20 <i>0.787</i>	Rubber / Steel	3	

# Indicates item not stocked at time of printing - Please enquire for lead time

E&OE Pricing and all details subject to change without notice - Copyright Miniature Bearings Australia Pty Ltd

MBA Size Listings are a guide to sizes only and must not be solely relied on for critical design information.

## Mounts - Cylindrical - Male to Blank

Part Number	Nom. Body Dia. (D) mm	Body Length (H) mm	Configuration	Compression Load kgf (lbs)	Shear Load kgf (lbs)	Thread Size	Thread Length (L1) mm	Material	Features	Other Information
	<i>inches</i>	<i>inches</i>					<i>inches</i>			
# CM30.0x30-M8-MB	30 <i>1.181</i>	30 <i>1.181</i>		47 (105.28)		M8	20 <i>0.787</i>	Rubber / Steel	3	
# CM30.0x40-M8-MB	30 <i>1.181</i>	40 <i>1.575</i>		42 (94.08)		M8	20 <i>0.787</i>	Rubber / Steel	3	
# CM40.0x20-M8-MB	40 <i>1.575</i>	20 <i>0.787</i>		99 (221.76)		M8	23 <i>0.906</i>	Rubber / Steel	3	
# CM40.0x30-M10-MB	40 <i>1.575</i>	30 <i>1.181</i>		95 (212.8)		M10	28 <i>1.102</i>	Rubber / Steel	3	
# CM40.0x30-M8--MB	40 <i>1.575</i>	30 <i>1.181</i>		90 (201.6)		M8	23 <i>0.906</i>	Rubber / Steel	3	
# CM40.0x40-M8-MB	40 <i>1.575</i>	40 <i>1.575</i>		84 (188.16)		M8	23 <i>0.906</i>	Rubber / Steel	3	
# CM50.0x20-M10-MB	50 <i>1.969</i>	20 <i>0.787</i>		190 (425.6)		M10	28 <i>1.102</i>	Rubber / Steel	3	
# CM50.0x30-M10-MB	50 <i>1.969</i>	30 <i>1.181</i>		149 (333.76)		M10	28 <i>1.102</i>	Rubber / Steel	3	
# CM50.0x40-M10-MB	50 <i>1.969</i>	40 <i>1.575</i>		137 (306.88)		M10	28 <i>1.102</i>	Rubber / Steel	3	
# CM50.0x45-M10-MB	50 <i>1.969</i>	45 <i>1.772</i>		134 (300.16)		M10	28 <i>1.102</i>	Rubber / Steel	3	

# Indicates item not stocked at time of printing - Please enquire for lead time

E&OE Pricing and all details subject to change without notice - Copyright Miniature Bearings Australia Pty Ltd

MBA Size Listings are a guide to sizes only and must not be solely relied on for critical design information.

## Mounts - Cylindrical - Male to Blank

Part Number	Nom. Body Dia. (D) mm	Body Length (H) mm	Configuration	Compression Load kgf (lbs)	Shear Load kgf (lbs)	Thread Size	Thread Length (L1) mm	Material	Features	Other Information
	<i>inches</i>	<i>inches</i>					<i>inches</i>			
# CM50.0x50-M10-MB	50 <i>1.969</i>	50 <i>1.969</i>		129 (288.96)		M10	28 <i>1.102</i>	Rubber / Steel	3	
# CM60.0x40-M10-MB	60 <i>2.362</i>	40 <i>1.575</i>		145 (324.8)		M10	28 <i>1.102</i>	Rubber / Steel	3	
# CM60.0x40-M12-MB	60 <i>2.362</i>	40 <i>1.575</i>		152 (340.48)		M12	33 <i>1.299</i>	Rubber / Steel	3	
# CM70.0x45-M10-MB	70 <i>2.756</i>	45 <i>1.772</i>		262 (586.88)		M10	28 <i>1.102</i>	Rubber / Steel	3	
# CM75.0x25-M12-MB	75 <i>2.953</i>	25 <i>0.984</i>		389 (871.36)		M12	37 <i>1.457</i>	Rubber / Steel	3	
# CM75.0x40-M12-MB	75 <i>2.953</i>	40 <i>1.575</i>		354 (792.96)		M12	37 <i>1.457</i>	Rubber / Steel	3	
# CM75.0x50-M12-MB	75 <i>2.953</i>	50 <i>1.969</i>		325 (728)		M12	37 <i>1.457</i>	Rubber / Steel	3	
# CM75.0x55-M12-MB	75 <i>2.953</i>	55 <i>2.165</i>		318 (712.32)		M12	37 <i>1.457</i>	Rubber / Steel	3	
# CM100.0x50-M16-MB	100 <i>3.937</i>	50 <i>1.969</i>		482 (1079.68)		M16	41 <i>1.614</i>	Rubber / Steel	3	
# CM100.0x55-M16-MB	100 <i>3.937</i>	55 <i>2.165</i>		476 (1066.24)		M16	41 <i>1.614</i>	Rubber / Steel	3	

# Indicates item not stocked at time of printing - Please enquire for lead time

E&OE Pricing and all details subject to change without notice - Copyright Miniature Bearings Australia Pty Ltd

MBA Size Listings are a guide to sizes only and must not be solely relied on for critical design information.



DISTRIBUTED BY

Ask us to put your name and address here

<http://www.minibearings.com.au/product>

Ph +61 7 3245 7977

Fax +61 7 3245 1017

Catalogue requests to [catalogues@minibearings.com.au](mailto:catalogues@minibearings.com.au)

