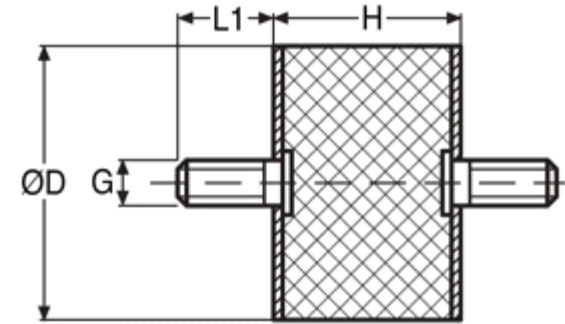




MBA

Mounts - Cylindrical - Male to Male



Rubber hardness 60 Duro Standard unless otherwise noted

This catalogue to be read in conjunction with information at
http://www.minibearings.com.au/ogue/tech/mounts/cylindrical_mounts_neoprene.pdf
http://www.minibearings.com.au/ogue/tech/mounts/cylindrical_mounts_urethane.pdf
http://www.minibearings.com.au/ogue/tech/mounts/cylindrical_mounts_rubber.pdf

Mounts - Cylindrical - Male to Male

| Part Number | Nom. Body Dia. (D) mm | Body Length (H) mm | Configuration | Compression Load kgf (lbs) | Shear Load kgf (lbs) | Thread Size | Thread Length (L1) mm | Material | Features | Other Information |
|----------------------|-----------------------|--------------------|---------------|----------------------------|----------------------|-------------|-----------------------|-------------------------|----------|-------------------|
| | <i>inches</i> | <i>inches</i> | | | | | <i>inches</i> | | | |
| # CM07.0x08-4-40-MML | 7 | 8.1 | | 0.22 (0.5) | 0.09 (0.2) | 4-40 UNC | 5.1 | Urethane / Plated Steel | 1 | |
| | <i>0.276</i> | <i>0.319</i> | | | | | <i>0.201</i> | | | |
| # CM07.0x08-4-40-MMH | 7 | 8.1 | | 1.79 (4.0) | 0.67 (1.5) | 4-40 UNC | 5.1 | Urethane / Plated Steel | 1 | |
| | <i>0.276</i> | <i>0.319</i> | | | | | <i>0.201</i> | | | |
| # CM08.0x08-M3-MM | 8 | 8 | | 4.9 (11.1) | 1.6 (3.7) | M3 | 6 | Rubber / Steel | 3 | |
| | <i>0.315</i> | <i>0.315</i> | | | | | <i>0.236</i> | | | |

Mounts - Cylindrical - Male to Male

| Part Number | Nom. Body Dia. (D) mm | Body Length (H) mm | Configuration | Compression Load kgf (lbs) | Shear Load kgf (lbs) | Thread Size | Thread Length (L1) mm | Material | Features | Other Information |
|----------------------|--------------------------|-----------------------|---------------|-------------------------------|-------------------------|-------------|-----------------------------|-------------------------------|----------|----------------------|
| | <i>inches</i> | <i>inches</i> | | | | | <i>inches</i> | | | |
| CM10.0x10-M4-MM | 10 <i>0.394</i> | 10 <i>0.394</i> | | 8.2 (18.5) | 3.3 (7.4) | M4 | 10 <i>0.394</i> | Rubber / Steel | 3 | |
| # CM10.3x13-6-32-MMH | 10.3 <i>0.406</i> | 12.7 <i>0.500</i> | | 3.57 (8.0) | 1.34 (3.0) | 6-32 UNC | 9.5 <i>0.374</i> | Urethane / Plated Steel | 1 | |
| # CM10.3x13-6-32-MML | 10.3 <i>0.406</i> | 12.7 <i>0.500</i> | | 0.45 (1.0) | 0.18 (0.4) | 6-32 UNC | 9.5 <i>0.374</i> | Urethane / Plated Steel | 1 | |
| # CM10.3x13-8-32-MMH | 10.3 <i>0.406</i> | 12.7 <i>0.500</i> | | 3.57 (8.0) | 1.34 (3.0) | 8-32 UNC | 9.5 <i>0.374</i> | Urethane / Plated Steel | 1 | |
| # CM10.3x13-8-32-MML | 10.3 <i>0.406</i> | 12.7 <i>0.500</i> | | 0.45 (1.0) | 0.18 (0.4) | 8-32 UNC | 9.5 <i>0.374</i> | Urethane / Plated Steel | 1 | |
| # CM11.0x13-M4-MMC07 | 11 <i>0.433</i> | 12.7 <i>0.500</i> | | 4.63 (10.4) | 2.49 (5.6) | M4 x 0.7 | 7.0 <i>0.276</i> | Rubber / Zinc Plated Steel | 3 | |
| # CM11.0x13-M4-MMD10 | 11 <i>0.433</i> | 12.7 <i>0.500</i> | | 5.92 (13.3) | 2.85 (6.4) | M4 x 0.7 | 10.0 <i>0.394</i> | Rubber / Zinc Plated Steel | 3 | |
| # CM11.0x13-M4-MMC10 | 11 <i>0.433</i> | 12.7 <i>0.500</i> | | 4.63 (10.4) | 2.49 (5.6) | M4 x 0.7 | 10.0 <i>0.394</i> | Rubber / Zinc Plated Steel | 3 | |

Indicates item not stocked at time of printing - Please enquire for lead time

E&OE Pricing and all details subject to change without notice - Copyright Miniature Bearings Australia Pty Ltd

MBA Size Listings are a guide to sizes only and must not be solely relied on for critical design information.

Mounts - Cylindrical - Male to Male

| Part Number | Nom. Body Dia. (D) mm | Body Length (H) mm | Configuration | Compression Load kgf (lbs) | Shear Load kgf (lbs) | Thread Size | Thread Length (L1) mm | Material | Features | Other Information |
|----------------------|--------------------------|-----------------------|---------------|-------------------------------|-------------------------|-------------|-----------------------------|-------------------------------|----------|----------------------|
| | <i>inches</i> | <i>inches</i> | | | | | <i>inches</i> | | | |
| # CM11.0x13-M4-MMB10 | 11 | 12.7 | | 2.85 (6.4) | 1.60 (3.6) | M4 x 0.7 | 10.0 | Rubber / Zinc Plated Steel | 3 | |
| | <i>0.433</i> | <i>0.500</i> | | | | | <i>0.394</i> | | | |
| # CM11.0x13-M4-MMB07 | 11 | 12.7 | | 2.85 (6.4) | 1.60 (3.6) | M4 x 0.7 | 7.0 | Rubber / Zinc Plated Steel | 3 | |
| | <i>0.433</i> | <i>0.500</i> | | | | | <i>0.276</i> | | | |
| # CM11.0x13-M4-MMA07 | 11 | 12.7 | | 2.18 (4.9) | 1.20 (2.7) | M4 x 0.7 | 7.0 | Rubber / Zinc Plated Steel | 3 | |
| | <i>0.433</i> | <i>0.500</i> | | | | | <i>0.276</i> | | | |
| # CM11.0x13-8-32-MMD | 11 | 12.7 | | 5.94 (13.3) | 2.86 (6.4) | 8-32 UNC | 9.5 | Rubber / Steel or Brass | 3 | |
| | <i>0.433</i> | <i>0.500</i> | | | | | <i>0.374</i> | | | |
| # CM11.0x13-M4-MMD07 | 11 | 12.7 | | 5.92 (13.3) | 2.85 (6.4) | M4 x 0.7 | 7.0 | Rubber / Zinc Plated Steel | 3 | |
| | <i>0.433</i> | <i>0.500</i> | | | | | <i>0.276</i> | | | |
| # CM11.0x13-8-32-MMC | 11 | 12.7 | | 4.64 (10.4) | 2.50 (5.6) | 8-32 UNC | 9.5 | Rubber / Steel or Brass | 3 | |
| | <i>0.433</i> | <i>0.500</i> | | | | | <i>0.374</i> | | | |
| # CM11.0x13-8-32-MMB | 11 | 12.7 | | 2.86 (6.4) | 1.61 (3.6) | 8-32 UNC | 9.5 | Rubber / Steel or Brass | 3 | |
| | <i>0.433</i> | <i>0.500</i> | | | | | <i>0.374</i> | | | |
| # CM11.0x13-8-32-MMA | 11 | 12.7 | | 2.19 (4.9) | 1.21 (2.7) | 8-32 UNC | 9.5 | Rubber / Steel or Brass | 3 | |
| | <i>0.433</i> | <i>0.500</i> | | | | | <i>0.374</i> | | | |

Indicates item not stocked at time of printing - Please enquire for lead time

E&OE Pricing and all details subject to change without notice - Copyright Miniature Bearings Australia Pty Ltd

MBA Size Listings are a guide to sizes only and must not be solely relied on for critical design information.

Mounts - Cylindrical - Male to Male

| Part Number | Nom. Body Dia. (D) mm | Body Length (H) mm | Configuration | Compression Load kgf (lbs) | Shear Load kgf (lbs) | Thread Size | Thread Length (L1) mm | Material | Features | Other Information |
|----------------------|--------------------------|-----------------------|---------------|-------------------------------|-------------------------|-------------|-----------------------------|---|----------|----------------------|
| | <i>inches</i> | <i>inches</i> | | | | | <i>inches</i> | | | |
| # CM11.0x13-M4-MMA10 | 11 <i>0.433</i> | 12.7 <i>0.500</i> | | 2.18 (4.9) | 1.20 (2.7) | M4 x 0.7 | 10.0 <i>0.394</i> | Rubber / Zinc Plated Steel | 3 | |
| # CM14.3x13-8-32-MMD | 14.3 <i>0.563</i> | 12.7 <i>0.500</i> | | 11.16 (25.0) | 5.58 (12.5) | 8-32 UNC | 9.5 <i>0.374</i> | Rubber / Steel or Brass | 3 | |
| # CM14.3x13-8-32-MMA | 14.3 <i>0.563</i> | 12.7 <i>0.500</i> | | 3.57 (8.0) | 1.96 (4.4) | 8-32 UNC | 9.5 <i>0.374</i> | Rubber / Steel or Brass | 3 | |
| # CM14.3x13-8-32-MMB | 14.3 <i>0.563</i> | 12.7 <i>0.500</i> | | 5.36 (12.0) | 2.99 (6.7) | 8-32 UNC | 9.5 <i>0.374</i> | Rubber / Steel or Brass | 3 | |
| # CM14.3x13-8-32-MMC | 14.3 <i>0.563</i> | 12.7 <i>0.500</i> | | 7.14 (16.0) | 4.02 (9.0) | 8-32 UNC | 9.5 <i>0.374</i> | Rubber / Steel or Brass | 3 | |
| # CM15.0x07-M4-MM | 15 <i>0.591</i> | 7 <i>0.276</i> | | 16.5 (36.9) | 5.5 (12.3) | M4 | 10 <i>0.394</i> | Rubber / Steel | 3 | |
| # CM15.0x08-M4-MM | 15 <i>0.591</i> | 8 <i>0.315</i> | | 16.5 (36.9) | 4.9 (11.1) | M4 | 10 <i>0.394</i> | Rubber / Steel | 3 | |
| # CM15.0x10-M4-MM | 15 <i>0.591</i> | 10 <i>0.394</i> | | 15.3 (33.7) | 4.9 (11.1) | M4 | 10 <i>0.394</i> | Natural Rubber / Steel, Zinc Plated | 3 | |

Indicates item not stocked at time of printing - Please enquire for lead time
E&OE Pricing and all details subject to change without notice - Copyright Miniature Bearings Australia Pty Ltd
MBA Size Listings are a guide to sizes only and must not be solely relied on for critical design information.

Mounts - Cylindrical - Male to Male

| Part Number | Nom. Body Dia. (D) mm | Body Length (H) mm | Configuration | Compression Load kgf (lbs) | Shear Load kgf (lbs) | Thread Size | Thread Length (L1) mm | Material | Features | Other Information |
|---------------------|--------------------------|-----------------------|---------------|-------------------------------|-------------------------|---------------------|-----------------------------|---|----------|----------------------|
| | <i>inches</i> | <i>inches</i> | | | | | <i>inches</i> | | | |
| # CM15.0x15-M4-MM | 15 <i>0.591</i> | 15 <i>0.591</i> | | 15.3 (33.7) | 4.9 (11.1) | M4 | 14 <i>0.551</i> | Natural Rubber / Steel, Zinc Plated | 3 | |
| # CM15.0x15-M5-MM | 15 <i>0.591</i> | 15 <i>0.591</i> | | 14.8 (33.2) | 5.5 (12.3) | M5 | 8 <i>0.315</i> | Rubber / Steel | 3 | |
| # CM15.0x20-M4-MM | 15 <i>0.591</i> | 20 <i>0.787</i> | | 13.7 (30.8) | 4.4 (9.8) | M4 | 13 <i>0.512</i> | Rubber / Steel | 3 | |
| # CM16.0x16-14-MM | 16 <i>0.630</i> | 16 <i>0.630</i> | | 8.93 (20.0) | 2.23 (5.0) | 1/4 UNC (20 TPI) | 12.7 <i>0.500</i> | Urethane / Plated Steel | 1 | |
| # CM19.0x10-14-MMA | 19 <i>0.748</i> | 9.5 <i>0.374</i> | | 9.82 (22.0) | 3.75 (8.4) | 1/4 UNC (20 TPI) | 10.41 <i>0.410</i> | Rubber / Steel or Brass | 3 | |
| # CM19.0x10-14-MMB | 19 <i>0.748</i> | 9.5 <i>0.374</i> | | 12.72 (28.5) | 5.31 (11.9) | 1/4 UNC (20 TPI) | 10.41 <i>0.410</i> | Rubber / Steel or Brass | 3 | |
| # CM20.0x08-M6-MM | 20 <i>0.787</i> | 8 <i>0.315</i> | | 23.1 (51.7) | 7.7 (17.2) | M6 | 18 <i>0.709</i> | Rubber / Steel | 3 | |
| # CM20.0x10-M6-MM | 20 <i>0.787</i> | 10 <i>0.394</i> | | 18.7 (41.8) | 7.7 (17.2) | M6 | 18 <i>0.709</i> | Rubber / Steel | 3 | |
| # CM20.0x10-M6-MM16 | 20 <i>0.787</i> | 10 <i>0.394</i> | | 36.7 (80.9) | 3.1 (6.8) | M6 | 16 <i>0.630</i> | Natural Rubber / Steel, Zinc Plated | 3 | |

Indicates item not stocked at time of printing - Please enquire for lead time

E&OE Pricing and all details subject to change without notice - Copyright Miniature Bearings Australia Pty Ltd

MBA Size Listings are a guide to sizes only and must not be solely relied on for critical design information.

Mounts - Cylindrical - Male to Male

| Part Number | Nom. Body Dia. (D) mm | Body Length (H) mm | Configuration | Compression Load kgf (lbs) | Shear Load kgf (lbs) | Thread Size | Thread Length (L1) mm | Material | Features | Other Information |
|---------------------|--------------------------|-----------------------|---------------|-------------------------------|-------------------------|-------------|-----------------------------|---|----------|----------------------|
| | <i>inches</i> | <i>inches</i> | | | | | <i>inches</i> | | | |
| # CM20.0x10-M6-MM10 | 20 | 10 | | 36.7 (80.9) | 3.1 (6.8) | M6 | 10 | Natural Rubber / Steel, Zinc Plated | 3 | |
| | <i>0.787</i> | <i>0.394</i> | | | | | <i>0.394</i> | | | |
| # CM20.0x15-M6-MM | 20 | 15 | | 34.7 (76.5) | 4.1 (9) | M6 | 16 | Natural Rubber / Steel, Zinc Plated | 3 | |
| | <i>0.787</i> | <i>0.591</i> | | | | | <i>0.630</i> | | | |
| # CM20.0x20-M6-MM | 20 | 20 | | 34.7 (76.5) | 2 (4.4) | M6 | 16.0 | Natural Rubber / Steel, Zinc Plated | 3 | |
| | <i>0.787</i> | <i>0.787</i> | | | | | <i>0.630</i> | | | |
| # CM20.0x25-M6-MM | 20 | 25 | | 24.5 (54) | 2 (4.4) | M6 | 16 | Natural Rubber / Steel, Zinc Plated | 3 | |
| | <i>0.787</i> | <i>0.984</i> | | | | | <i>0.630</i> | | | |
| CM20.0x25-M6-MM1518 | 20 | 25 | | | | M6 | 15 / 18 | Rubber / Steel | 3 | |
| | <i>0.787</i> | <i>0.984</i> | | | | | | | | |
| # CM20.0x30-M6-MM | 20 | 30 | | 24.5 (54) | 3.1 (6.8) | M6 | 16 | Natural Rubber / Steel, Zinc Plated | 3 | |
| | <i>0.787</i> | <i>1.181</i> | | | | | <i>0.630</i> | | | |
| # CM25.0x10-M6-MM | 25 | 10 | | 35.7 (78.7) | 5.1 (11.2) | M6 | 20 | Natural Rubber / Steel, Zinc Plated | 3 | |
| | <i>0.984</i> | <i>0.394</i> | | | | | <i>0.787</i> | | | |

Indicates item not stocked at time of printing - Please enquire for lead time

E&OE Pricing and all details subject to change without notice - Copyright Miniature Bearings Australia Pty Ltd

MBA Size Listings are a guide to sizes only and must not be solely relied on for critical design information.

Mounts - Cylindrical - Male to Male

| Part Number | Nom. Body Dia. (D) mm | Body Length (H) mm | Configuration | Compression Load kgf (lbs) | Shear Load kgf (lbs) | Thread Size | Thread Length (L1) mm | Material | Features | Other Information |
|--------------------|--------------------------|-----------------------|---------------|-------------------------------|-------------------------|---------------------|-----------------------------|-------------------------------|----------|----------------------|
| | <i>inches</i> | <i>inches</i> | | | | | <i>inches</i> | | | |
| # CM25.0x14-14-MMC | 25 <i>0.984</i> | 13.5 <i>0.531</i> | | 33.04 (74.0) | 16.52 (37.0) | 1/4 UNC (20 TPI) | 12.7 <i>0.500</i> | Rubber / Steel or Brass | 3 | |
| # CM25.0x14-M6-MMD | 25 <i>0.984</i> | 13.5 <i>0.531</i> | | 33.36 (74.7) | 18.68 (41.8) | M6 x 1 | 12.0 <i>0.472</i> | Rubber / Zinc Plated Steel | 3 | |
| # CM25.0x14-M6-MMC | 25 <i>0.984</i> | 13.5 <i>0.531</i> | | 32.92 (73.7) | 16.46 (36.9) | M6 x 1 | 12.0 <i>0.472</i> | Rubber / Zinc Plated Steel | 3 | |
| # CM25.0x14-M6-MMB | 25 <i>0.984</i> | 13.5 <i>0.531</i> | | 19.13 (42.9) | 9.34 (20.9) | M6 x 1 | 12.0 <i>0.472</i> | Rubber / Zinc Plated Steel | 3 | |
| # CM25.0x14-14-MMD | 25 <i>0.984</i> | 13.5 <i>0.531</i> | | 33.48 (75.0) | 18.75 (42.0) | 1/4 UNC (20 TPI) | 12.7 <i>0.500</i> | Rubber / Steel or Brass | 3 | |
| CM25.0x14-14-MMB | 25 <i>0.984</i> | 13.5 <i>0.531</i> | | 19.20 (43.0) | 9.38 (21.0) | 1/4 UNC (20 TPI) | 12.7 <i>0.500</i> | Rubber / Steel or Brass | 3 | |
| CM25.0x14-14-MMA | 25 <i>0.984</i> | 13.5 <i>0.531</i> | | 17.86 (40.0) | 8.48 (19.0) | 1/4 UNC (20 TPI) | 12.7 <i>0.500</i> | Rubber / Steel or Brass | 3 | |
| # CM25.0x14-M6-MMA | 25 <i>0.984</i> | 13.5 <i>0.531</i> | | 17.80 (39.9) | 8.45 (18.9) | M6 x 1 | 12.0 <i>0.472</i> | Rubber / Zinc Plated Steel | 3 | |

Indicates item not stocked at time of printing - Please enquire for lead time

E&OE Pricing and all details subject to change without notice - Copyright Miniature Bearings Australia Pty Ltd

MBA Size Listings are a guide to sizes only and must not be solely relied on for critical design information.

Mounts - Cylindrical - Male to Male

| Part Number | Nom. Body Dia. (D) mm | Body Length (H) mm | Configuration | Compression Load kgf (lbs) | Shear Load kgf (lbs) | Thread Size | Thread Length (L1) mm | Material | Features | Other Information |
|---------------------|--------------------------|-----------------------|---------------|-------------------------------|-------------------------|-------------|-----------------------------|---|----------|----------------------|
| | <i>inches</i> | <i>inches</i> | | | | | <i>inches</i> | | | |
| CM25.0x15-M6-MM | 25 | 15 | | 35.7 (78.7) | 5.1 (11.2) | M6 | 18 | Natural Rubber / Steel, Zinc Plated | 3 | |
| | <i>0.984</i> | <i>0.591</i> | | | | | <i>0.709</i> | | | |
| # CM25.0x19-516-MMC | 25 | 19 | | 26.79 (60.0) | 15.18 (34.0) | 5/16 | 14.3 | Rubber / Steel or Brass | 3 | |
| | <i>0.984</i> | <i>0.748</i> | | | | | <i>0.563</i> | | | |
| # CM25.0x19-M6-MMC | 25 | 19 | | 26.69 (59.8) | 15.12 (33.9) | M6 x 1 | 12.0 | Rubber / Zinc Plated Steel | 3 | |
| | <i>0.984</i> | <i>0.748</i> | | | | | <i>0.472</i> | | | |
| # CM25.0x19-M6-MMD | 25 | 19 | | 35.14 (78.7) | 17.79 (39.8) | M6 x 1 | 12.0 | Rubber / Zinc Plated Steel | 3 | |
| | <i>0.984</i> | <i>0.748</i> | | | | | <i>0.472</i> | | | |
| CM25.0x19-M6-MMB | 25 | 19 | | 17.79 (39.8) | 9.34 (20.9) | M6 x 1 | 12.0 | Rubber / Zinc Plated Steel | 3 | |
| | <i>0.984</i> | <i>0.748</i> | | | | | <i>0.472</i> | | | |
| # CM25.0x19-M6-MMA | 25 | 19 | | 14.68 (32.9) | 8.01 (17.9) | M6 x 1 | 12.0 | Rubber / Zinc Plated Steel | 3 | |
| | <i>0.984</i> | <i>0.748</i> | | | | | <i>0.472</i> | | | |
| CM25.0x19-516-MMD | 25 | 19 | | 35.27 (79.0) | 17.86 (40.0) | 5/16 | 14.3 | Rubber / Steel or Brass | 3 | |
| | <i>0.984</i> | <i>0.748</i> | | | | | <i>0.563</i> | | | |
| # CM25.0x19-516-MMB | 25 | 19 | | 17.86 (40.0) | 9.38 (21.0) | 5/16 | 14.3 | Rubber / Steel or Brass | 3 | |
| | <i>0.984</i> | <i>0.748</i> | | | | | <i>0.563</i> | | | |

Indicates item not stocked at time of printing - Please enquire for lead time

E&OE Pricing and all details subject to change without notice - Copyright Miniature Bearings Australia Pty Ltd

MBA Size Listings are a guide to sizes only and must not be solely relied on for critical design information.

Mounts - Cylindrical - Male to Male

| Part Number | Nom. Body Dia. (D) mm | Body Length (H) mm | Configuration | Compression Load kgf (lbs) | Shear Load kgf (lbs) | Thread Size | Thread Length (L1) mm | Material | Features | Other Information |
|---------------------|--------------------------|-----------------------|---------------|-------------------------------|-------------------------|---------------------|-----------------------------|---|----------|----------------------|
| | <i>inches</i> | <i>inches</i> | | | | | <i>inches</i> | | | |
| # CM25.0x19-516-MMA | 25 <i>0.984</i> | 19 <i>0.748</i> | | 14.73 (33.0) | 8.04 (18.0) | 5/16 | 14.3 <i>0.563</i> | Rubber / Steel or Brass | 3 | |
| # CM25.0x19-516-MM | 25 <i>0.984</i> | 19 <i>0.748</i> | | 22.32 (50.0) | 5.80 (13.0) | 5/16 | 15.9 <i>0.626</i> | Urethane / Plated Steel | 1 | |
| # CM25.0x19-14-MMD | 25 <i>0.984</i> | 19 <i>0.748</i> | | 35.27 (79.0) | 17.86 (40.0) | 1/4 UNC (20 TPI) | 12.7 <i>0.500</i> | Rubber / Steel or Brass | 3 | |
| # CM25.0x19-14-MMC | 25 <i>0.984</i> | 19 <i>0.748</i> | | 26.79 (60.0) | 15.18 (34.0) | 1/4 UNC (20 TPI) | 12.7 <i>0.500</i> | Rubber / Steel or Brass | 3 | |
| # CM25.0x19-14-MMA | 25 <i>0.984</i> | 19 <i>0.748</i> | | 14.73 (33.0) | 8.04 (18.0) | 1/4 UNC (20 TPI) | 12.7 <i>0.500</i> | Rubber / Steel or Brass | 3 | |
| # CM25.0x19-14-MMB | 25 <i>0.984</i> | 19 <i>0.748</i> | | 17.86 (40.0) | 9.38 (21.0) | 1/4 UNC (20 TPI) | 12.7 <i>0.500</i> | Rubber / Steel or Brass | 3 | |
| CM25.0x20-M6-MM | 25 <i>0.984</i> | 20 <i>0.787</i> | | 45.9 (101) | 5.1 (11.2) | M6 | 18 <i>0.709</i> | Natural Rubber / Steel, Zinc Plated | 3 | |
| # CM25.0x25-M6-MM | 25 <i>0.984</i> | 25 <i>0.984</i> | | 40.8 (89.9) | 5.1 (11.2) | M6 | 18 <i>0.709</i> | Natural Rubber / Steel, Zinc Plated | 3 | |

Indicates item not stocked at time of printing - Please enquire for lead time

E&OE Pricing and all details subject to change without notice - Copyright Miniature Bearings Australia Pty Ltd

MBA Size Listings are a guide to sizes only and must not be solely relied on for critical design information.

Mounts - Cylindrical - Male to Male

| Part Number | Nom. Body Dia. (D) mm | Body Length (H) mm | Configuration | Compression Load kgf (lbs) | Shear Load kgf (lbs) | Thread Size | Thread Length (L1) mm | Material | Features | Other Information |
|---------------------|--------------------------|-----------------------|---------------|-------------------------------|-------------------------|-------------|-----------------------------|---|----------|----------------------|
| | <i>inches</i> | <i>inches</i> | | | | | <i>inches</i> | | | |
| # CM25.0x25-516-MMC | 25 <i>0.984</i> | 25 <i>0.984</i> | | 25.45 (57.0) | 15.63 (35.0) | 5/16 | 14.3 <i>0.563</i> | Rubber / Steel or Brass | 3 | |
| # CM25.0x25-516-MMB | 25 <i>0.984</i> | 25 <i>0.984</i> | | 21.43 (48.0) | 9.38 (21.0) | 5/16 | 14.3 <i>0.563</i> | Rubber / Steel or Brass | 3 | |
| # CM25.0x25-516-MMD | 25 <i>0.984</i> | 25 <i>0.984</i> | | 38.39 (86.0) | 19.20 (43.0) | 5/16 | 14.3 <i>0.563</i> | Rubber / Steel or Brass | 3 | |
| # CM25.0x25-516-MMA | 25 <i>0.984</i> | 25 <i>0.984</i> | | 16.52 (37.0) | 7.14 (16.0) | 5/16 | 14.3 <i>0.563</i> | Rubber / Steel or Brass | 3 | |
| # CM25.0x25-M8-MM | 25 <i>0.984</i> | 25 <i>0.984</i> | | 45.9 (101) | 5.1 (11.2) | M8 | 20 <i>0.787</i> | Natural Rubber / Steel, Zinc Plated | 3 | |
| # CM25.0x30-M6-MM | 25 <i>0.984</i> | 30 <i>1.181</i> | | 34.7 (76.5) | 3.1 (6.8) | M6 | 18 <i>0.709</i> | Natural Rubber / Steel, Zinc Plated | 3 | |
| # CM25.0x30-M8-MM | 25 <i>0.984</i> | 30 <i>1.181</i> | | 34.7 (76.5) | 3.1 (6.8) | M8 | 20 <i>0.787</i> | Natural Rubber / Steel, Zinc Plated | 3 | |

Indicates item not stocked at time of printing - Please enquire for lead time

E&OE Pricing and all details subject to change without notice - Copyright Miniature Bearings Australia Pty Ltd

MBA Size Listings are a guide to sizes only and must not be solely relied on for critical design information.

Mounts - Cylindrical - Male to Male

| Part Number | Nom. Body Dia. (D) mm | Body Length (H) mm | Configuration | Compression Load kgf (lbs) | Shear Load kgf (lbs) | Thread Size | Thread Length (L1) mm | Material | Features | Other Information |
|-----------------------|--------------------------|-----------------------|---------------|-------------------------------|-------------------------|-------------|-----------------------------|---|----------|----------------------|
| | <i>inches</i> | <i>inches</i> | | | | | <i>inches</i> | | | |
| # CM30.0x15-M8-MM | 30 | 15 | | 42.8 (94.4) | 9.2 (20.3) | M8 | 23 | Natural Rubber / Steel, Zinc Plated | 3 | |
| | <i>1.181</i> | <i>0.591</i> | | | | | <i>0.906</i> | | | |
| # CM30.0x20-M8-MM | 30 | 20 | | 67.3 (148) | 9.2 (20.3) | M8 | 23 | Natural Rubber / Steel, Zinc Plated | 3 | |
| | <i>1.181</i> | <i>0.787</i> | | | | | <i>0.906</i> | | | |
| # CM30.0x25-M8-MM | 30 | 25 | | 67.3 (148) | 9.2 (20.3) | M8 | 20 | Natural Rubber / Steel, Zinc Plated | 3 | |
| | <i>1.181</i> | <i>0.984</i> | | | | | <i>0.787</i> | | | |
| # CM30.0x30-M8-MM | 30 | 30 | | 62.2 (137) | 7.1 (15.7) | M8 | 23 | Natural Rubber / Steel, Zinc Plated | 3 | |
| | <i>1.181</i> | <i>1.181</i> | | | | | <i>0.906</i> | | | |
| # CM30.0x30-M8-MM-D40 | 30 | 30 | | 62.2 (137) | 7.1 (15.7) | M8 | 23 | Natural Rubber / Steel, Zinc Plated | 3 | 40 Durometer |
| | <i>1.181</i> | <i>1.181</i> | | | | | <i>0.906</i> | | | |
| # CM30.0x40-M8-MM | 30 | 40 | | 56.0 (123) | 5.1 (11.2) | M8 | 23 | Natural Rubber / Steel, Zinc Plated | 3 | |
| | <i>1.181</i> | <i>1.575</i> | | | | | <i>0.906</i> | | | |
| # CM32.0x19-M8-MMD | 32 | 19 | | 63.16 (141.5) | 28.47 (63.8) | M8 x 1.25 | 13.5 | Rubber / Zinc Plated Steel | 3 | |
| | <i>1.260</i> | <i>0.748</i> | | | | | <i>0.531</i> | | | |

Indicates item not stocked at time of printing - Please enquire for lead time

E&OE Pricing and all details subject to change without notice - Copyright Miniature Bearings Australia Pty Ltd

MBA Size Listings are a guide to sizes only and must not be solely relied on for critical design information.

Mounts - Cylindrical - Male to Male

| Part Number | Nom. Body Dia. (D) mm | Body Length (H) mm | Configuration | Compression Load kgf (lbs) | Shear Load kgf (lbs) | Thread Size | Thread Length (L1) mm | Material | Features | Other Information |
|---------------------|--------------------------|-----------------------|---------------|-------------------------------|-------------------------|-------------|-----------------------------|-------------------------------|----------|----------------------|
| | <i>inches</i> | <i>inches</i> | | | | | <i>inches</i> | | | |
| # CM32.0x19-M8-MMC | 32 <i>1.260</i> | 19 <i>0.748</i> | | 48.49 (108.6) | 22.69 (50.8) | M8 x 1.25 | 13.5 <i>0.531</i> | Rubber / Zinc Plated Steel | 3 | |
| # CM32.0x19-M8-MMB | 32 <i>1.260</i> | 19 <i>0.748</i> | | 32.47 (72.7) | 16.90 (37.9) | M8 x 1.25 | 13.5 <i>0.531</i> | Rubber / Zinc Plated Steel | 3 | |
| # CM32.0x19-M8-MMA | 32 <i>1.260</i> | 19 <i>0.748</i> | | 24.91 (55.8) | 14.23 (31.9) | M8 x 1.25 | 13.5 <i>0.531</i> | Rubber / Zinc Plated Steel | 3 | |
| # CM32.0x19-516-MMD | 32 <i>1.260</i> | 19 <i>0.748</i> | | 63.39 (142.0) | 28.57 (64.0) | 5/16 | 14.3 <i>0.563</i> | Rubber / Steel or Brass | 3 | |
| # CM32.0x19-516-MMC | 32 <i>1.260</i> | 19 <i>0.748</i> | | 48.66 (109.0) | 22.77 (51.0) | 5/16 | 14.3 <i>0.563</i> | Rubber / Steel or Brass | 3 | |
| # CM32.0x19-516-MMA | 32 <i>1.260</i> | 19 <i>0.748</i> | | 25.00 (56.0) | 14.29 (32.0) | 5/16 | 14.3 <i>0.563</i> | Rubber / Steel or Brass | 3 | |
| # CM32.0x19-516-MMB | 32 <i>1.260</i> | 19 <i>0.748</i> | | 32.59 (73.0) | 16.96 (38.0) | 5/16 | 14.3 <i>0.563</i> | Rubber / Steel or Brass | 3 | |
| # CM32.0x22-516-MMD | 32 <i>1.260</i> | 22.2 <i>0.874</i> | | 54.91 (123.0) | 28.13 (63.0) | 5/16 | 14.3 <i>0.563</i> | Rubber / Steel or Brass | 3 | |

Indicates item not stocked at time of printing - Please enquire for lead time

E&OE Pricing and all details subject to change without notice - Copyright Miniature Bearings Australia Pty Ltd

MBA Size Listings are a guide to sizes only and must not be solely relied on for critical design information.

Mounts - Cylindrical - Male to Male

| Part Number | Nom. Body Dia. (D) mm | Body Length (H) mm | Configuration | Compression Load kgf (lbs) | Shear Load kgf (lbs) | Thread Size | Thread Length (L1) mm | Material | Features | Other Information |
|---------------------|--------------------------|-----------------------|---------------|-------------------------------|-------------------------|-------------|-----------------------------|-------------------------------|----------|----------------------|
| | <i>inches</i> | <i>inches</i> | | | | | <i>inches</i> | | | |
| # CM32.0x22-516-MMC | 32 <i>1.260</i> | 22.2 <i>0.874</i> | | 51.34 (115.0) | 21.43 (48.0) | 5/16 | 14.3 <i>0.563</i> | Rubber / Steel or Brass | 3 | |
| # CM32.0x22-516-MMB | 32 <i>1.260</i> | 22.2 <i>0.874</i> | | 36.61 (82.0) | 16.52 (37.0) | 5/16 | 14.3 <i>0.563</i> | Rubber / Steel or Brass | 3 | |
| # CM32.0x22-516-MMA | 32 <i>1.260</i> | 22.2 <i>0.874</i> | | 25.00 (56.0) | 14.29 (32.0) | 5/16 | 14.3 <i>0.563</i> | Rubber / Steel or Brass | 3 | |
| # CM32.0x32-516-MMB | 32 <i>1.260</i> | 32 <i>1.260</i> | | 28.57 (64.0) | 13.84 (31.0) | 5/16 | 14.3 <i>0.563</i> | Rubber / Steel or Brass | 3 | |
| # CM32.0x32-516-MMC | 32 <i>1.260</i> | 32 <i>1.260</i> | | 40.18 (90.0) | 21.43 (48.0) | 5/16 | 14.3 <i>0.563</i> | Rubber / Steel or Brass | 3 | |
| # CM32.0x32-516-MMD | 32 <i>1.260</i> | 32 <i>1.260</i> | | 53.57 (120.0) | 28.13 (63.0) | 5/16 | 14.3 <i>0.563</i> | Rubber / Steel or Brass | 3 | |
| # CM32.0x32-M8-MMA | 32 <i>1.260</i> | 32 <i>1.260</i> | | 18.24 (40.9) | 9.34 (20.9) | M8 x 1.25 | 13.5 <i>0.531</i> | Rubber / Zinc Plated Steel | 3 | |
| # CM32.0x32-M8-MMB | 32 <i>1.260</i> | 32 <i>1.260</i> | | 28.47 (63.8) | 13.79 (30.9) | M8 x 1.25 | 13.5 <i>0.531</i> | Rubber / Zinc Plated Steel | 3 | |

Indicates item not stocked at time of printing - Please enquire for lead time

E&OE Pricing and all details subject to change without notice - Copyright Miniature Bearings Australia Pty Ltd

MBA Size Listings are a guide to sizes only and must not be solely relied on for critical design information.

Mounts - Cylindrical - Male to Male

| Part Number | Nom. Body Dia. (D) mm | Body Length (H) mm | Configuration | Compression Load kgf (lbs) | Shear Load kgf (lbs) | Thread Size | Thread Length (L1) mm | Material | Features | Other Information |
|---------------------|--------------------------|-----------------------|---------------|-------------------------------|-------------------------|-------------|-----------------------------|-------------------------------|----------|----------------------|
| | <i>inches</i> | <i>inches</i> | | | | | <i>inches</i> | | | |
| # CM32.0x32-M8-MMC | 32 | 32 | | 40.03 (89.7) | 21.35 (47.8) | M8 x 1.25 | 13.5 | Rubber / Zinc Plated Steel | 3 | |
| | <i>1.260</i> | <i>1.260</i> | | | | | <i>0.531</i> | | | |
| # CM32.0x32-M8-MMD | 32 | 32 | | 53.38 (119.6) | 28.02 (62.8) | M8 x 1.25 | 13.5 | Rubber / Zinc Plated Steel | 3 | |
| | <i>1.260</i> | <i>1.260</i> | | | | | <i>0.531</i> | | | |
| # CM32.0x32-516-MMA | 32 | 32 | | 18.30 (41.0) | 9.38 (21.0) | 5/16 | 14.3 | Rubber / Steel or Brass | 3 | |
| | <i>1.260</i> | <i>1.260</i> | | | | | <i>0.563</i> | | | |
| CM35.0x16-516-MMA | 35 | 16 | | 41.52 (93.0) | 16.07 (36.0) | 5/16 | 14.3 | Rubber / Steel or Brass | 3 | |
| | <i>1.378</i> | <i>0.630</i> | | | | | <i>0.563</i> | | | |
| # CM35.0x16-M8-MMD | 35 | 16 | | 82.29 (184.3) | 29.80 (66.8) | M8 x 1.25 | 13.5 | Rubber / Zinc Plated Steel | 3 | |
| | <i>1.378</i> | <i>0.630</i> | | | | | <i>0.531</i> | | | |
| # CM35.0x16-M8-MMC | 35 | 16 | | 70.28 (157.4) | 25.35 (56.8) | M8 x 1.25 | 13.5 | Rubber / Zinc Plated Steel | 3 | |
| | <i>1.378</i> | <i>0.630</i> | | | | | <i>0.531</i> | | | |
| # CM35.0x16-M8-MMB | 35 | 16 | | 52.49 (117.6) | 20.46 (45.8) | M8 x 1.25 | 13.5 | Rubber / Zinc Plated Steel | 3 | |
| | <i>1.378</i> | <i>0.630</i> | | | | | <i>0.531</i> | | | |
| # CM35.0x16-M8-MMA | 35 | 16 | | 41.37 (92.7) | 16.01 (35.9) | M8 x 1.25 | 13.5 | Rubber / Zinc Plated Steel | 3 | |
| | <i>1.378</i> | <i>0.630</i> | | | | | <i>0.531</i> | | | |

Indicates item not stocked at time of printing - Please enquire for lead time

E&OE Pricing and all details subject to change without notice - Copyright Miniature Bearings Australia Pty Ltd

MBA Size Listings are a guide to sizes only and must not be solely relied on for critical design information.

Mounts - Cylindrical - Male to Male

| Part Number | Nom. Body Dia. (D) mm | Body Length (H) mm | Configuration | Compression Load kgf (lbs) | Shear Load kgf (lbs) | Thread Size | Thread Length (L1) mm | Material | Features | Other Information |
|---------------------|--------------------------|-----------------------|---------------|-------------------------------|-------------------------|-------------|-----------------------------|-------------------------------|----------|----------------------|
| | <i>inches</i> | <i>inches</i> | | | | | <i>inches</i> | | | |
| # CM35.0x16-516-MMD | 35 <i>1.378</i> | 16 <i>0.630</i> | | 82.59 (185.0) | 29.91 (67.0) | 5/16 | 14.3 <i>0.563</i> | Rubber / Steel or Brass | 3 | |
| # CM35.0x16-516-MMB | 35 <i>1.378</i> | 16 <i>0.630</i> | | 52.68 (118.0) | 20.54 (46.0) | 5/16 | 14.3 <i>0.563</i> | Rubber / Steel or Brass | 3 | |
| # CM35.0x16-516-MMC | 35 <i>1.378</i> | 16 <i>0.630</i> | | 70.54 (158.0) | 25.45 (57.0) | 5/16 | 14.3 <i>0.563</i> | Rubber / Steel or Brass | 3 | |
| # CM35.0x25-516-MMA | 35 <i>1.378</i> | 25 <i>0.984</i> | | 20.98 (47.0) | 12.05 (27.0) | 5/16 | 14.3 <i>0.563</i> | Rubber / Steel or Brass | 3 | |
| # CM35.0x25-M8-MMB | 35 <i>1.378</i> | 25 <i>0.984</i> | | 32.92 (73.7) | 18.24 (40.9) | M8 x 1.25 | 13.5 <i>0.531</i> | Rubber / Zinc Plated Steel | 3 | |
| # CM35.0x25-M8-MMC | 35 <i>1.378</i> | 25 <i>0.984</i> | | 42.70 (95.6) | 29.36 (65.8) | M8 x 1.25 | 13.5 <i>0.531</i> | Rubber / Zinc Plated Steel | 3 | |
| # CM35.0x25-M8-MMD | 35 <i>1.378</i> | 25 <i>0.984</i> | | 46.71 (104.6) | 29.36 (65.8) | M8 x 1.25 | 13.5 <i>0.531</i> | Rubber / Zinc Plated Steel | 3 | |
| # CM35.0x25-516-MMD | 35 <i>1.378</i> | 25 <i>0.984</i> | | 46.88 (105.0) | 29.46 (66.0) | 5/16 | 14.3 <i>0.563</i> | Rubber / Steel or Brass | 3 | |

Indicates item not stocked at time of printing - Please enquire for lead time

E&OE Pricing and all details subject to change without notice - Copyright Miniature Bearings Australia Pty Ltd

MBA Size Listings are a guide to sizes only and must not be solely relied on for critical design information.

Mounts - Cylindrical - Male to Male

| Part Number | Nom. Body Dia. (D) mm | Body Length (H) mm | Configuration | Compression Load kgf (lbs) | Shear Load kgf (lbs) | Thread Size | Thread Length (L1) mm | Material | Features | Other Information |
|---------------------|--------------------------|-----------------------|---------------|-------------------------------|-------------------------|-------------|-----------------------------|---|----------|----------------------|
| | <i>inches</i> | <i>inches</i> | | | | | <i>inches</i> | | | |
| # CM35.0x25-516-MMB | 35 <i>1.378</i> | 25 <i>0.984</i> | | 33.04 (74.0) | 18.30 (41.0) | 5/16 | 14.3 <i>0.563</i> | Rubber / Steel or Brass | 3 | |
| # CM35.0x25-516-MMC | 35 <i>1.378</i> | 25 <i>0.984</i> | | 42.86 (96.0) | 29.46 (66.0) | 5/16 | 14.3 <i>0.563</i> | Rubber / Steel or Brass | 3 | |
| # CM35.0x25-M8-MMA | 35 <i>1.378</i> | 25 <i>0.984</i> | | 20.91 (46.8) | 12.01 (26.9) | M8 x 1.25 | 13.5 <i>0.531</i> | Rubber / Zinc Plated Steel | 3 | |
| # CM40.0x20-M8-MM | 40 <i>1.575</i> | 20 <i>0.787</i> | | 64.2 (142) | 12.2 (26.9) | M8 | 23 <i>0.906</i> | Natural Rubber / Steel, Zinc Plated | 3 | |
| # CM40.0x25-M10-MM | 40 <i>1.575</i> | 25 <i>0.984</i> | | 87.9 (196.9) | 27.5 (61.5) | M10 | 28 <i>1.102</i> | Rubber / Steel | 3 | |
| # CM40.0x25-M8-MM | 40 <i>1.575</i> | 25 <i>0.984</i> | | 87.9 (196.9) | 27.5 (61.5) | M8 | 13 <i>0.512</i> | Rubber / Steel | 3 | |
| CM40.0x30-M8-MM | 40 <i>1.575</i> | 30 <i>1.181</i> | | 99.9 (220) | 15.3 (33.7) | M8 | 23 <i>0.906</i> | Natural Rubber / Steel, Zinc Plated | 3 | |
| # CM40.0x30-M10-MM | 40 <i>1.575</i> | 30 <i>1.181</i> | | 99.9 (220) | 15.3 (33.7) | M10 | 28 <i>1.102</i> | Natural Rubber / Steel, Zinc Plated | 3 | |

Indicates item not stocked at time of printing - Please enquire for lead time

E&OE Pricing and all details subject to change without notice - Copyright Miniature Bearings Australia Pty Ltd

MBA Size Listings are a guide to sizes only and must not be solely relied on for critical design information.

Mounts - Cylindrical - Male to Male

| Part Number | Nom. Body Dia. (D) mm | Body Length (H) mm | Configuration | Compression Load kgf (lbs) | Shear Load kgf (lbs) | Thread Size | Thread Length (L1) mm | Material | Features | Other Information |
|--------------------|--------------------------|-----------------------|---------------|-------------------------------|-------------------------|-------------|-----------------------------|---|----------|----------------------|
| | <i>inches</i> | <i>inches</i> | | | | | <i>inches</i> | | | |
| # CM40.0x35-M8-MM | 40 | 35 | | 89.7 (198) | 13.3 (29.3) | M8 | 23 | Natural Rubber / Steel, Zinc Plated | 3 | |
| | <i>1.575</i> | <i>1.378</i> | | | | | <i>0.906</i> | | | |
| # CM40.0x40-M8-MM | 40 | 40 | | 109.1 (241) | 13.3 (29.3) | M8 | 23 | Natural Rubber / Steel, Zinc Plated | 3 | |
| | <i>1.575</i> | <i>1.575</i> | | | | | <i>0.906</i> | | | |
| # CM40.0x40-M10-MM | 40 | 40 | | 109.1 (241) | 13.3 (29.3) | M10 | 28 | Natural Rubber / Steel, Zinc Plated | 3 | |
| | <i>1.575</i> | <i>1.575</i> | | | | | <i>1.102</i> | | | |
| # CM50.0x20-M10-MM | 50 | 20 | | 171.3 (376.9) | 21.4 (47.2) | M10 | 28 | Natural Rubber / Steel, Zinc Plated | 3 | |
| | <i>1.969</i> | <i>0.787</i> | | | | | <i>1.102</i> | | | |
| # CM50.0x40-M10-MM | 50 | 40 | | 145.8 (321) | 17.3 (38.1) | M10 | 28 | Natural Rubber / Steel, Zinc Plated | 3 | |
| | <i>1.969</i> | <i>1.575</i> | | | | | <i>1.102</i> | | | |
| # CM50.0x45-M10-MM | 50 | 45 | | 138.7 (306) | 16.3 (35.9) | M10 | 28 | Natural Rubber / Steel, Zinc Plated | 3 | |
| | <i>1.969</i> | <i>1.772</i> | | | | | <i>1.102</i> | | | |
| # CM50.0x50-M10-MM | 50 | 50 | | 135.6 (299) | 13.3 (29.3) | M10 | 28 | Natural Rubber / Steel, Zinc Plated | 3 | |
| | <i>1.969</i> | <i>1.969</i> | | | | | <i>1.102</i> | | | |

Indicates item not stocked at time of printing - Please enquire for lead time

E&OE Pricing and all details subject to change without notice - Copyright Miniature Bearings Australia Pty Ltd

MBA Size Listings are a guide to sizes only and must not be solely relied on for critical design information.

Mounts - Cylindrical - Male to Male

| Part Number | Nom. Body Dia. (D) mm | Body Length (H) mm | Configuration | Compression Load kgf (lbs) | Shear Load kgf (lbs) | Thread Size | Thread Length (L1) mm | Material | Features | Other Information |
|-----------------------|--------------------------|-----------------------|---------------|-------------------------------|-------------------------|-------------|-----------------------------|---|----------|----------------------|
| | <i>inches</i> | <i>inches</i> | | | | | <i>inches</i> | | | |
| # CM50.8x26-1-2-20-MM | 50.8 / 69.85 | 26.194 | | 149.7 (330) | 63.5 (140) | 1/2-20 UNF | 23.019 | Natural Rubber / Steel, Zinc Plated | 3 | |
| | | <i>1.031</i> | | | | | <i>0.906</i> | | | |
| # CM60.0x30-M12-MM | 60 | 30 | | 175.4 (387) | 36.7 (80.9) | M12 | 37 | Natural Rubber / Steel, Zinc Plated | 3 | |
| | <i>2.362</i> | <i>1.181</i> | | | | | <i>1.457</i> | | | |
| # CM60.0x40-M10-MM | 60 | 40 | | 172.3 (380) | 28.6 (63.1) | M10 | 28 | Rubber / Steel | 3 | |
| | <i>2.362</i> | <i>1.575</i> | | | | | <i>1.102</i> | | | |
| # CM60.0x40-M12-MM | 60 | 40 | | 172.3 (380) | 28.6 (63.1) | M12 | 37 | Natural Rubber / Steel, Zinc Plated | 3 | |
| | <i>2.362</i> | <i>1.575</i> | | | | | <i>1.457</i> | | | |
| # CM60.0x50-M10-MM | 60 | 50 | | 202.9 (447) | 24.5 (54) | M10 | 35 | Natural Rubber / Steel, Zinc Plated | 3 | |
| | <i>2.362</i> | <i>1.969</i> | | | | | <i>1.378</i> | | | |
| # CM60.0x50-M12-MM | 60 | 50 | | 202.9 (447) | 24.5 (54) | M12 | 37 | Natural Rubber / Steel, Zinc Plated | 3 | |
| | <i>2.362</i> | <i>1.969</i> | | | | | <i>1.457</i> | | | |
| # CM70.0x40-M10-MM | 70 | 40 | | 214.1 (472) | 40.8 (89.9) | M10 | 28 | Natural Rubber / Steel, Zinc Plated | 3 | |
| | <i>2.756</i> | <i>1.575</i> | | | | | <i>1.102</i> | | | |

Indicates item not stocked at time of printing - Please enquire for lead time

E&OE Pricing and all details subject to change without notice - Copyright Miniature Bearings Australia Pty Ltd

MBA Size Listings are a guide to sizes only and must not be solely relied on for critical design information.

Mounts - Cylindrical - Male to Male

| Part Number | Nom. Body Dia. (D) mm | Body Length (H) mm | Configuration | Compression Load kgf (lbs) | Shear Load kgf (lbs) | Thread Size | Thread Length (L1) mm | Material | Features | Other Information |
|--------------------|--------------------------|-----------------------|---------------|-------------------------------|-------------------------|-------------|-----------------------------|---|----------|----------------------|
| | <i>inches</i> | <i>inches</i> | | | | | <i>inches</i> | | | |
| # CM70.0x45-M10-MM | 70 <i>2.756</i> | 45 <i>1.772</i> | | 234.5 (517) | 56.1 (124) | M10 | 28 <i>1.102</i> | Rubber / Steel | 3 | |
| # CM70.0x50-M12-MM | 70 <i>2.756</i> | 50 <i>1.969</i> | | 234.5 (517) | 56.1 (124) | M12 | 37 <i>1.457</i> | Natural Rubber / Steel, Zinc Plated | 3 | |
| # CM70.0x50-M10-MM | 70 <i>2.756</i> | 50 <i>1.969</i> | | 234.5 (517) | 56.1 (124) | M10 | 28 <i>1.102</i> | Natural Rubber / Steel, Zinc Plated | 3 | |
| # CM75.0x25-M12-MM | 75 <i>2.953</i> | 25 <i>0.984</i> | | 389.5 (859) | 90.8 (200) | M12 | 37 <i>1.457</i> | Natural Rubber / Steel, Zinc Plated | 3 | |
| # CM75.0x40-M12-MM | 75 <i>2.953</i> | 40 <i>1.575</i> | | 384.4 (847) | 80.6 (178) | M12 | 37 <i>1.457</i> | Natural Rubber / Steel, Zinc Plated | 3 | |
| # CM75.0x50-M12-MM | 75 <i>2.953</i> | 50 <i>1.969</i> | | 379.3 (836) | 70.4 (155) | M12 | 37 <i>1.457</i> | Natural Rubber / Steel, Zinc Plated | 3 | |
| # CM75.0x55-M12-MM | 75 <i>2.953</i> | 55 <i>2.165</i> | | 274.7 (615.4) | 109.9 (246.2) | M12 | 37 <i>1.457</i> | Rubber / Steel | 3 | |

Indicates item not stocked at time of printing - Please enquire for lead time

E&OE Pricing and all details subject to change without notice - Copyright Miniature Bearings Australia Pty Ltd

MBA Size Listings are a guide to sizes only and must not be solely relied on for critical design information.

Mounts - Cylindrical - Male to Male

| Part Number | Nom. Body Dia. (D) mm | Body Length (H) mm | Configuration | Compression Load kgf (lbs) | Shear Load kgf (lbs) | Thread Size | Thread Length (L1) mm | Material | Features | Other Information |
|---------------------|--------------------------|-----------------------|---------------|-------------------------------|-------------------------|-------------|-----------------------------|---|----------|----------------------|
| | <i>inches</i> | <i>inches</i> | | | | | <i>inches</i> | | | |
| # CM100.0x30-M16-MM | 100 | 30 | | 713.8 (1574) | 112.2 (247) | M16 | 45 | Natural Rubber / Steel, Zinc Plated | 3 | |
| | <i>3.937</i> | <i>1.181</i> | | | | | <i>1.772</i> | | | |
| # CM100.0x40-M16-MM | 100 | 40 | | 698.5 (1540) | 101 (223) | M16 | 45 | Natural Rubber / Steel, Zinc Plated | 3 | |
| | <i>3.937</i> | <i>1.575</i> | | | | | <i>1.772</i> | | | |
| # CM100.0x50-M16-MM | 100 | 50 | | 571 (1259) | 101 (223) | M16 | 45 | Natural Rubber / Steel, Zinc Plated | 3 | |
| | <i>3.937</i> | <i>1.969</i> | | | | | <i>1.772</i> | | | |
| # CM100.0x55-M16-MM | 100 | 55 | | 647.5 (1427) | 80.6 (178) | M16 | 45 | Natural Rubber / Steel, Zinc Plated | 3 | |
| | <i>3.937</i> | <i>2.165</i> | | | | | <i>1.772</i> | | | |
| # CM100.0x60-M16-MM | 100 | 60 | | 598.6 (1320) | 50 (110) | M16 | 45 | Natural Rubber / Steel, Zinc Plated | 3 | |
| | <i>3.937</i> | <i>2.362</i> | | | | | <i>1.772</i> | | | |
| # CM100.0x75-M16-MM | 100 | 75 | | 549.5 (1230.8) | 49.5 (110.8) | M16 | 41 | Rubber / Steel | 3 | |
| | <i>3.937</i> | <i>2.953</i> | | | | | <i>1.614</i> | | | |

Indicates item not stocked at time of printing - Please enquire for lead time

E&OE Pricing and all details subject to change without notice - Copyright Miniature Bearings Australia Pty Ltd

MBA Size Listings are a guide to sizes only and must not be solely relied on for critical design information.



DISTRIBUTED BY

Ask us to put your name and address here

<http://www.minibearings.com.au/product>

Ph +61 7 3245 7977

Fax +61 7 3245 1017

Catalogue requests to catalogues@minibearings.com.au

| | | | | | |
|--|--|--|--|--|--|
| | | | | | |
| | | | | | |
| | | | | | |