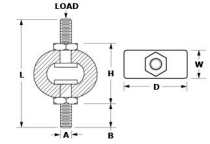




# MBA

## Mounts - Ring Band



This catalogue to be read in conjunction with information at [http://www.minibearings.com.au/ogue/tech/mounts/mvrb\\_pdf.pdf](http://www.minibearings.com.au/ogue/tech/mounts/mvrb_pdf.pdf)

### Mounts - Ring Band

Part Number	Rated Load kg (lbs)	Thread Size	Thread Length mm <i>inches</i>	Body Height (H) Loaded mm <i>inches</i>	Body Height (H) No Load mm <i>inches</i>	Body Length (D) mm <i>inches</i>	Overall Length (L) mm <i>inches</i>	Body Thickness (W) mm <i>inches</i>	Dyn. Spring rate (K) kg.cm (lb.in)	Damping Constant (C)
# RBM-045	0.45 (1.0)	6-32 UNC	12.70 <i>0.500</i>	12.95 <i>0.510</i>	14.22 <i>0.560</i>	39.62 <i>1.560</i>	7.87 <i>0.310</i>	103.7 (90)	0.19	
# RBM-090	0.9 (2.0)	6-32 UNC	12.70 <i>0.500</i>	12.95 <i>0.510</i>	14.22 <i>0.560</i>	39.62 <i>1.560</i>	7.87 <i>0.310</i>	178.6 (155)	0.38	
# RBM-113	1.13 (2.5)	10-32 UNC	15.88 <i>0.625</i>	14.73 <i>0.580</i>	17.27 <i>0.680</i>	49.02 <i>1.930</i>	8.64 <i>0.340</i>	72.6 (63)	0.03	
# RBM-136	1.36 (3.0)	10-32 UNC	15.88 <i>0.625</i>	14.73 <i>0.580</i>	17.27 <i>0.680</i>	49.02 <i>1.930</i>	8.64 <i>0.340</i>	88.7 (77)	0.06	

# Indicates item not stocked at time of printing - Please enquire for lead time  
 E&OE Pricing and all details subject to change without notice - Copyright Miniature Bearings Australia Pty Ltd  
 MBA Size Listings are a guide to sizes only and must not be solely relied on for critical design information.

## Mounts - Ring Band

Part Number	Rated Load kg (lbs)	Thread Size	Thread Length mm  <i>inches</i>	Body Height (H) Loaded mm  <i>inches</i>	Body Height (H) No Load mm  <i>inches</i>	Body Length (D) mm  <i>inches</i>	Overall Length (L) mm  <i>inches</i>	Body Thickness (W) mm  <i>inches</i>	Dyn. Spring rate (K) kg.cm (lb.in)	Damping Constant (C)
# RBM-226	2.26 (5.0)	1/4 UNC	19.05 <i>0.750</i>	20.57 <i>0.810</i>	23.62 <i>0.930</i>	64.52 <i>2.540</i>	13.46 <i>0.530</i>	157.8 (137)	0.03	
# RBM-362	3.62 (8.0)	1/4 UNC	19.05 <i>0.750</i>	20.57 <i>0.810</i>	23.62 <i>0.930</i>	64.52 <i>2.540</i>	13.46 <i>0.530</i>	241.9 (210)	0.17	
# RBM-588	5.88 (13.0)	5/16 UNC	15.88 <i>0.625</i>	36.83 <i>1.450</i>	44.45 <i>1.750</i>	76.20 <i>3.000</i>	19.05 <i>0.750</i>	140.5 (122)	0.14	
# RBM-905	9.05 (20.0)	5/16 UNC	15.88 <i>0.625</i>	36.83 <i>1.450</i>	44.45 <i>1.750</i>	76.20 <i>3.000</i>	19.05 <i>0.750</i>	198.1 (172)	0.26	

# Indicates item not stocked at time of printing - Please enquire for lead time

E&OE Pricing and all details subject to change without notice - Copyright Miniature Bearings Australia Pty Ltd

MBA Size Listings are a guide to sizes only and must not be solely relied on for critical design information.



DISTRIBUTED BY

Ask us to put your name and address here

<http://www.minibearings.com.au/product>

Ph +61 7 3245 7977

Fax +61 7 3245 1017

Catalogue requests to [catalogues@minibearings.com.au](mailto:catalogues@minibearings.com.au)

