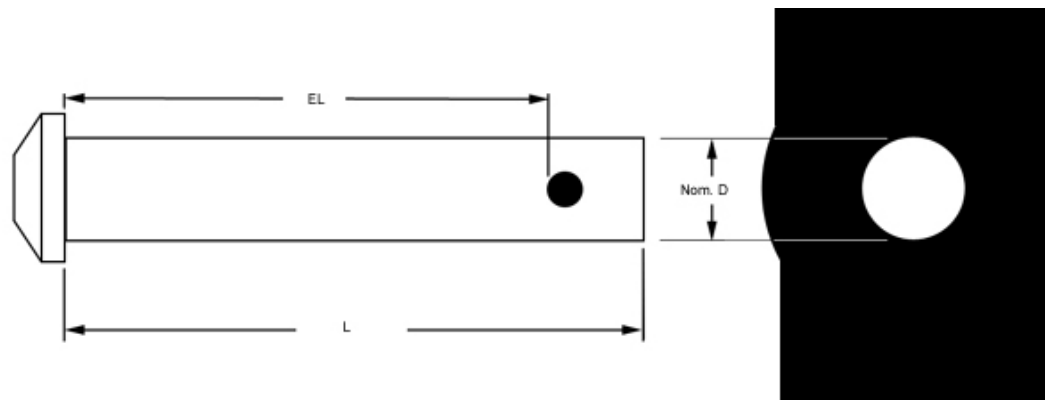




# MBA

## Pins - Clevis - Stainless Steel 316



Match with a suitable R-Clip or Split Pin - pin size shown in listings

This catalogue to be read in conjunction with information at  
<http://www.minibearings.com.au//categories/joints+clevis/all/pics/>  
<http://www.minibearings.com.au//categories/yokes/all/pics/>  
<http://www.minibearings.com.au//categories/cotter+pin/all/pics/>

### Pins - Clevis - Stainless Steel 316

Part Number	Nom. Hole Diameter (D) mm	Effective Length (EL) mm	Nom. Length (L) mm	Suit Retaining Pin Dia. mm
	<i>inches</i>	<i>inches</i>	<i>inches</i>	<i>inches</i>
CLP-048-091-6	4.76 <i>0.187</i>	9.12 <i>0.359</i>	12.70 <i>0.500</i>	1.57 <i>0.062</i>
CLP-048-155-6	4.76 <i>0.187</i>	15.47 <i>0.609</i>	19.05 <i>0.750</i>	2.36 <i>0.093</i>
CLP-048-218-6	4.76 <i>0.187</i>	21.81 <i>0.859</i>	25.40 <i>1.000</i>	1.57 <i>0.062</i>

## Pins - Clevis - Stainless Steel 316

Part Number	Nom. Hole Diameter (D) mm <i>inches</i>	Effective Length (EL) mm <i>inches</i>	Nom. Length (L) mm <i>inches</i>	Suit Retaining Pin Dia. mm <i>inches</i>
# CLP-048-277-6	4.76 <i>0.187</i>	27.66 <i>1.089</i>	26.67 <i>1.050</i>	1.57 <i>0.062</i>
# CLP-048-345-6	4.76 <i>0.187</i>	34.51 <i>1.359</i>	38.10 <i>1.500</i>	1.57 <i>0.062</i>
# CLP-048-472-6	4.76 <i>0.187</i>	47.21 <i>1.859</i>	50.80 <i>2.000</i>	1.57 <i>0.062</i>
# CLP-064-091-6	6.35 <i>0.250</i>	9.12 <i>0.359</i>	12.70 <i>0.500</i>	2.36 <i>0.093</i>
# CLP-064-155-6	6.35 <i>0.250</i>	15.47 <i>0.609</i>	19.05 <i>0.750</i>	2.36 <i>0.093</i>
# CLP-064-218-6	6.35 <i>0.250</i>	21.81 <i>0.859</i>	25.40 <i>1.000</i>	2.36 <i>0.093</i>
# CLP-064-282-6	6.35 <i>0.250</i>	28.16 <i>1.109</i>	31.75 <i>1.250</i>	2.36 <i>0.093</i>
# CLP-064-345-6	6.35 <i>0.250</i>	34.51 <i>1.359</i>	38.10 <i>1.500</i>	2.36 <i>0.093</i>
# CLP-064-472-6	6.35 <i>0.250</i>	47.21 <i>1.859</i>	50.80 <i>2.000</i>	2.36 <i>0.093</i>
# CLP-064-599-6	6.35 <i>0.250</i>	59.91 <i>2.359</i>	63.50 <i>2.500</i>	2.36 <i>0.093</i>

# Indicates item not stocked at time of printing - Please enquire for lead time

E&OE Pricing and all details subject to change without notice - Copyright Miniature Bearings Australia Pty Ltd

MBA Size Listings are a guide to sizes only and must not be solely relied on for critical design information.

## Pins - Clevis - Stainless Steel 316

Part Number	Nom. Hole Diameter (D) mm <i>inches</i>	Effective Length (EL) mm <i>inches</i>	Nom. Length (L) mm <i>inches</i>	Suit Retaining Pin Dia. mm <i>inches</i>
# CLP-079-135-6	7.94 <i>0.313</i>	13.48 <i>0.531</i>	19.05 <i>0.750</i>	3.18 <i>0.125</i>
# CLP-079-198-6	7.94 <i>0.313</i>	19.83 <i>0.781</i>	25.40 <i>1.000</i>	3.18 <i>0.125</i>
# CLP-079-262-6	7.94 <i>0.313</i>	26.18 <i>1.031</i>	31.75 <i>1.250</i>	3.18 <i>0.125</i>
CLP-079-325-6	7.94 <i>0.313</i>	32.53 <i>1.281</i>	38.10 <i>1.500</i>	3.18 <i>0.125</i>
# CLP-079-389-6	7.94 <i>0.313</i>	38.88 <i>1.531</i>	44.45 <i>1.750</i>	3.18 <i>0.125</i>
# CLP-095-194-6	9.52 <i>0.375</i>	19.43 <i>0.765</i>	25.40 <i>1.000</i>	3.96 <i>0.156</i>
# CLP-095-258-6	9.52 <i>0.375</i>	25.78 <i>1.015</i>	31.75 <i>1.250</i>	3.96 <i>0.156</i>
# CLP-095-321-6	9.52 <i>0.375</i>	32.13 <i>1.265</i>	38.10 <i>1.500</i>	3.96 <i>0.156</i>
# CLP-095-385-6	9.52 <i>0.375</i>	38.48 <i>1.515</i>	44.45 <i>1.750</i>	3.96 <i>0.156</i>
# CLP-095-448-6	9.52 <i>0.375</i>	44.83 <i>1.765</i>	50.80 <i>2.000</i>	3.96 <i>0.156</i>

# Indicates item not stocked at time of printing - Please enquire for lead time

E&OE Pricing and all details subject to change without notice - Copyright Miniature Bearings Australia Pty Ltd

MBA Size Listings are a guide to sizes only and must not be solely relied on for critical design information.

## Pins - Clevis - Stainless Steel 316

Part Number	Nom. Hole Diameter (D) mm <i>inches</i>	Effective Length (EL) mm <i>inches</i>	Nom. Length (L) mm <i>inches</i>	Suit Retaining Pin Dia. mm <i>inches</i>
# CLP-111-321-6	11.11 <i>0.437</i>	32.13 <i>1.265</i>	38.10 <i>1.500</i>	3.96 <i>0.156</i>
# CLP-111-448-6	11.11 <i>0.437</i>	44.83 <i>1.765</i>	50.80 <i>2.000</i>	3.96 <i>0.156</i>
# CLP-127-194-6	12.70 <i>0.500</i>	19.43 <i>0.765</i>	25.40 <i>1.000</i>	3.96 <i>0.156</i>
# CLP-127-258-6	12.70 <i>0.500</i>	25.78 <i>1.015</i>	31.75 <i>1.250</i>	3.96 <i>0.156</i>
# CLP-127-321-6	12.70 <i>0.500</i>	32.13 <i>1.265</i>	38.10 <i>1.500</i>	3.96 <i>0.156</i>
# CLP-127-385-6	12.70 <i>0.500</i>	38.48 <i>1.515</i>	44.45 <i>1.750</i>	3.96 <i>0.156</i>
# CLP-127-448-6	12.70 <i>0.500</i>	44.83 <i>1.765</i>	50.80 <i>2.000</i>	3.96 <i>0.156</i>
# CLP-127-512-6	12.70 <i>0.500</i>	51.18 <i>2.015</i>	57.15 <i>2.250</i>	3.96 <i>0.156</i>
# CLP-159-321-6	15.87 <i>0.625</i>	32.13 <i>1.265</i>	38.10 <i>1.500</i>	3.96 <i>0.156</i>
# CLP-159-385-6	15.87 <i>0.625</i>	38.48 <i>1.515</i>	44.45 <i>1.750</i>	3.96 <i>0.156</i>

# Indicates item not stocked at time of printing - Please enquire for lead time

E&OE Pricing and all details subject to change without notice - Copyright Miniature Bearings Australia Pty Ltd

MBA Size Listings are a guide to sizes only and must not be solely relied on for critical design information.

## Pins - Clevis - Stainless Steel 316

Part Number	Nom. Hole Diameter (D) mm	Effective Length (EL) mm	Nom. Length (L) mm	Suit Retaining Pin Dia. mm
	<i>inches</i>	<i>inches</i>	<i>inches</i>	<i>inches</i>
# CLP-159-448-6	15.87 <i>0.625</i>	44.83 <i>1.765</i>	50.80 <i>2.000</i>	3.96 <i>0.156</i>
# CLP-159-829-6	15.87 <i>0.625</i>	82.93 <i>3.265</i>	88.90 <i>3.500</i>	3.96 <i>0.156</i>

# Indicates item not stocked at time of printing - Please enquire for lead time

E&OE Pricing and all details subject to change without notice - Copyright Miniature Bearings Australia Pty Ltd

MBA Size Listings are a guide to sizes only and must not be solely relied on for critical design information.



DISTRIBUTED BY

Ask us to put your name and address here

<http://www.minibearings.com.au/product>

Ph +61 7 3245 7977

Fax +61 7 3245 1017

Catalogue requests to [catalogues@minibearings.com.au](mailto:catalogues@minibearings.com.au)

