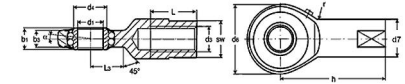




MBA

Rod Ends - Heavy Duty - Ball - Enlarged Eye



With integral self aligning ball bearing.

With grease nipple.

Housing: Tempered forged steel. Bearing Race: Case hardened.

Thread: Rolled - Surface galvanised.

Inner Ring: Ball bearing steel. Hardened, ground.

Lubrication: Calcium Complex Soap Grease temperature range -20°C to +120°C.

Rod Ends - Heavy Duty - Ball - Enlarged Eye

Part Number	Eye Size (d1) mm <i>inches</i>	Thread Size / Type (d3) mm <i>inches</i>	Housing OD (d6) mm <i>inches</i>	Centre Height (h) mm <i>inches</i>	Thread Length (L) mm <i>inches</i>	Top Width (b3) mm <i>inches</i>	Ball Width (b1) mm <i>inches</i>	Base Width (SW) mm <i>inches</i>	Base Length (d7) mm <i>inches</i>
# PF-10/RH	10.00 <i>0.394</i>	M8 Female Right Hand <i>1.181</i>	30.00 <i>1.181</i>	38.00 <i>1.496</i>	17.00 <i>0.669</i>	38.00 <i>1.496</i>	13.00 <i>0.512</i>	13.00 <i>0.512</i>	15.00 <i>0.591</i>
# PF-10/LH	10.00 <i>0.394</i>	M8 Female Left Hand <i>1.181</i>	30.00 <i>1.181</i>	38.00 <i>1.496</i>	17.00 <i>0.669</i>	38.00 <i>1.496</i>	13.00 <i>0.512</i>	13.00 <i>0.512</i>	15.00 <i>0.591</i>

Indicates item not stocked at time of printing - Please enquire for lead time

E&OE Pricing and all details subject to change without notice - Copyright Miniature Bearings Australia Pty Ltd

MBA Size Listings are a guide to sizes only and must not be solely relied on for critical design information.

Rod Ends - Heavy Duty - Ball - Enlarged Eye

Part Number	Eye Size (d1) mm	Thread Size / Type (d3) mm	Housing OD (d6) mm	Centre Height (h) mm	Thread Length (L) mm	Top Width (b3) mm	Ball Width (b1) mm	Base Width (SW) mm	Base Length (d7) mm
	<i>inches</i>	<i>inches</i>	<i>inches</i>	<i>inches</i>	<i>inches</i>	<i>inches</i>	<i>inches</i>	<i>inches</i>	<i>inches</i>
# PF-15/RH	15.00	M12 Female Right Hand	40.00	51.00	24.00	51.00	16.50	17.00	19.00
	<i>0.591</i>		<i>1.575</i>	<i>2.008</i>	<i>0.945</i>	<i>2.008</i>	<i>0.650</i>	<i>0.669</i>	<i>0.748</i>
# PF-15/LH	15.00	M12 Female Left Hand	40.00	51.00	24.00	51.00	16.50	17.00	19.00
	<i>0.591</i>		<i>1.575</i>	<i>2.008</i>	<i>0.945</i>	<i>2.008</i>	<i>0.650</i>	<i>0.669</i>	<i>0.748</i>
# PF20/RH	20.00	M16 Female Right Hand	48.00	65.00	32.00	65.00	20.50	19.00	22.00
	<i>0.787</i>		<i>1.890</i>	<i>2.559</i>	<i>1.260</i>	<i>2.559</i>	<i>0.807</i>	<i>0.748</i>	<i>0.866</i>

Indicates item not stocked at time of printing - Please enquire for lead time

E&OE Pricing and all details subject to change without notice - Copyright Miniature Bearings Australia Pty Ltd

MBA Size Listings are a guide to sizes only and must not be solely relied on for critical design information.



DISTRIBUTED BY

Ask us to put your name and address here

<http://www.minibearings.com.au/product>

Ph +61 7 3245 7977

Fax +61 7 3245 1017

Catalogue requests to catalogues@minibearings.com.au

