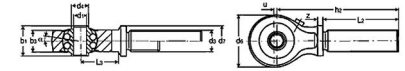




MBA

Rod Ends - Heavy Duty - Ball - Reduced Eye



With integral self aligning ball bearing.

With grease nipple.

Housing: Tempered forged steel. Bearing Race: Case hardened.

Thread: Rolled - Surface galvanised.

Inner Ring: Ball bearing steel. Hardened, ground.

Lubrication: Calcium Complex Soap Grease temperature range -20°C to +120°C.

Rod Ends - Heavy Duty - Ball - Reduced Eye

Part Number	Eye Size (d1) mm <i>inches</i>	Thread Size / Type (d3) mm <i>inches</i>	Housing OD (d6) mm <i>inches</i>	Centre Height (h) mm <i>inches</i>	Thread Length (L) mm <i>inches</i>	Top Width (b3) mm <i>inches</i>	Ball Width (b1) mm <i>inches</i>	Shoulder Diameter (d7) mm <i>inches</i>
# PM-05/RH	5.00 <i>0.197</i>	M8 x 1.00 Male Right Hand	19.00 <i>0.748</i>	57.00 <i>2.244</i>	39.50 <i>1.555</i>	57.00 <i>2.244</i>	12.00 <i>0.472</i>	12.00 <i>0.472</i>
# PM-05/LH	5.00 <i>0.197</i>	M8 x 1.00 Male Left Hand	19.00 <i>0.748</i>	57.00 <i>2.244</i>	39.50 <i>1.555</i>	57.00 <i>2.244</i>	12.00 <i>0.472</i>	12.00 <i>0.472</i>

Indicates item not stocked at time of printing - Please enquire for lead time

E&OE Pricing and all details subject to change without notice - Copyright Miniature Bearings Australia Pty Ltd

MBA Size Listings are a guide to sizes only and must not be solely relied on for critical design information.

Rod Ends - Heavy Duty - Ball - Reduced Eye

Part Number	Eye Size (d1) mm <i>inches</i>	Thread Size / Type (d3) mm <i>inches</i>	Housing OD (d6) mm <i>inches</i>	Centre Height (h) mm <i>inches</i>	Thread Length (L) mm <i>inches</i>	Top Width (b3) mm <i>inches</i>	Ball Width (b1) mm <i>inches</i>	Shoulder Diameter (d7) mm <i>inches</i>
# PM-06/RH	6.00 <i>0.236</i>	M10 x 1.00 Male Right Hand	24.00 <i>0.945</i>	64.00 <i>2.520</i>	42.50 <i>1.673</i>	64.00 <i>2.520</i>	14.00 <i>0.551</i>	14.00 <i>0.551</i>
# PM-06/LH	6.00 <i>0.236</i>	M10 x 1.00 Male Left Hand	24.00 <i>0.945</i>	64.00 <i>2.520</i>	42.50 <i>1.673</i>	64.00 <i>2.520</i>	14.00 <i>0.551</i>	14.00 <i>0.551</i>
# PM-08/RH	8.00 <i>0.315</i>	M12 x 1.50 Male Right Hand	30.00 <i>1.181</i>	72.00 <i>2.835</i>	46.50 <i>1.831</i>	72.00 <i>2.835</i>	17.00 <i>0.669</i>	15.00 <i>0.591</i>
# PM-08/LH	8.00 <i>0.315</i>	M12 x 1.50 Male Left Hand	30.00 <i>1.181</i>	72.00 <i>2.835</i>	46.50 <i>1.831</i>	72.00 <i>2.835</i>	17.00 <i>0.669</i>	15.00 <i>0.591</i>
# PM-10/LH	10.00 <i>0.394</i>	M14 x 1.50 Male Left Hand	36.00 <i>1.417</i>	82.00 <i>3.228</i>	49.50 <i>1.949</i>	82.00 <i>3.228</i>	19.00 <i>0.748</i>	20.00 <i>0.787</i>
# PM-10/RH	10.00 <i>0.394</i>	M14 x 1.50 Male Right Hand	36.00 <i>1.417</i>	82.00 <i>3.228</i>	49.50 <i>1.949</i>	82.00 <i>3.228</i>	19.00 <i>0.748</i>	20.00 <i>0.787</i>
# PM-12/RH	12.00 <i>0.472</i>	M16 x 1.50 Male Right Hand	40.00 <i>1.575</i>	90.00 <i>3.543</i>	53.50 <i>2.106</i>	90.00 <i>3.543</i>	21.00 <i>0.827</i>	20.00 <i>0.787</i>
# PM-12/LH	12.00 <i>0.472</i>	M16 x 1.50 Male Left Hand	40.00 <i>1.575</i>	90.00 <i>3.543</i>	53.50 <i>2.106</i>	90.00 <i>3.543</i>	21.00 <i>0.827</i>	20.00 <i>0.787</i>

Indicates item not stocked at time of printing - Please enquire for lead time

E&OE Pricing and all details subject to change without notice - Copyright Miniature Bearings Australia Pty Ltd

MBA Size Listings are a guide to sizes only and must not be solely relied on for critical design information.

Rod Ends - Heavy Duty - Ball - Reduced Eye

Part Number	Eye Size (d1) mm <i>inches</i>	Thread Size / Type (d3) mm <i>inches</i>	Housing OD (d6) mm <i>inches</i>	Centre Height (h) mm <i>inches</i>	Thread Length (L) mm <i>inches</i>	Top Width (b3) mm <i>inches</i>	Ball Width (b1) mm <i>inches</i>	Shoulder Diameter (d7) mm <i>inches</i>
# PM-15/LH	15.00 <i>0.591</i>	M20 x 1.50 Male Left Hand	42.00 <i>1.654</i>	100.00 <i>3.937</i>	62.50 <i>2.461</i>	100.00 <i>3.937</i>	26.00 <i>1.024</i>	20.00 <i>0.787</i>
# PM-15/RH	15.00 <i>0.591</i>	M20 x 1.50 Male Right Hand	42.00 <i>1.654</i>	100.00 <i>3.937</i>	62.50 <i>2.461</i>	100.00 <i>3.937</i>	26.00 <i>1.024</i>	20.00 <i>0.787</i>
# PM-17/LH	17.00 <i>0.669</i>	M20 x 1.50 Male Left Hand	48.00 <i>1.890</i>	105.00 <i>4.134</i>	62.50 <i>2.461</i>	105.00 <i>4.134</i>	26.00 <i>1.024</i>	22.00 <i>0.866</i>
# PM-17/RH	17.00 <i>0.669</i>	M20 x 1.50 Male Right Hand	48.00 <i>1.890</i>	105.00 <i>4.134</i>	62.50 <i>2.461</i>	105.00 <i>4.134</i>	26.00 <i>1.024</i>	22.00 <i>0.866</i>
# PM-20/LH	20.00 <i>0.787</i>	M24 x 1.50 Male Left Hand	56.00 <i>2.205</i>	117.00 <i>4.606</i>	68.50 <i>2.697</i>	117.00 <i>4.606</i>	30.00 <i>1.181</i>	24.00 <i>0.945</i>
# PM-20/RH	20.00 <i>0.787</i>	M24 x 1.50 Male Right Hand	56.00 <i>2.205</i>	117.00 <i>4.606</i>	68.50 <i>2.697</i>	117.00 <i>4.606</i>	30.00 <i>1.181</i>	24.00 <i>0.945</i>

Indicates item not stocked at time of printing - Please enquire for lead time

E&OE Pricing and all details subject to change without notice - Copyright Miniature Bearings Australia Pty Ltd

MBA Size Listings are a guide to sizes only and must not be solely relied on for critical design information.



DISTRIBUTED BY

Ask us to put your name and address here

<http://www.minibearings.com.au/product>

Ph +61 7 3245 7977

Fax +61 7 3245 1017

Catalogue requests to catalogues@minibearings.com.au

