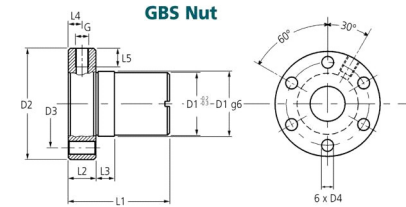




MBA

Screws - Ball - Economy - Rolled - Nut Only



Match with screw. Accuracy T7 50µm/300mm.

Steel 16 MnCr5 or 100Cr6.

Size, length of screw and end bearing configurations will affect the resulting loads and speeds.

Backlash 0.01 Percent of lead.

Accuracy T7 50µm/300mm.

Blank sleeve supplied in nut to retain balls. Do not remove without simultaneous assembly to screw.

Screws - Ball - Economy - Rolled - Nut Only

Part Number	Fits Screw Size mm	Lead mm	Nut OD (D1) mm	Flange OD (D2) mm	Bolt Hole (D4) mm	Overall Length (L1) mm	Flange Width (L2) mm	Grease Thread (G)	Stat/Dyn Torque (Co/C) kN	L3 / L4 / L5 / D3 mm
	<i>inches</i>	<i>inches</i>	<i>inches</i>	<i>inches</i>	<i>inches</i>	<i>inches</i>	<i>inches</i>			<i>inches</i>
# GBS-F-1605RH	16.0	5.00	28.00	48.00	5.50	44.00	12.00	M6	12.7 / 7.0	8.0 / 6.0 / 8.0 / 38.0
	<i>0.630</i>	<i>0.197</i>	<i>1.102</i>	<i>1.890</i>	<i>0.217</i>	<i>1.732</i>	<i>0.472</i>			
# GBS-F-2005RH	20.0	5.00	32.00	55.00	7.00	44.00	12.00	M6	17.0 / 7.0	8.0 / 6.0 / 8.0 / 45.0
	<i>0.787</i>	<i>0.197</i>	<i>1.260</i>	<i>2.165</i>	<i>0.276</i>	<i>1.732</i>	<i>0.472</i>			

Indicates item not stocked at time of printing - Please enquire for lead time

E&OE Pricing and all details subject to change without notice - Copyright Miniature Bearings Australia Pty Ltd

MBA Size Listings are a guide to sizes only and must not be solely relied on for critical design information.

Screws - Ball - Economy - Rolled - Nut Only

Part Number	Fits Screw Size mm	Lead mm	Nut OD (D1) mm	Flange OD (D2) mm	Bolt Hole (D4) mm	Overall Length (L1) mm	Flange Width (L2) mm	Grease Thread (G)	Stat/Dyn Torque (Co/C) kN	L3 / L4 / L5 / D3 mm
	<i>inches</i>	<i>inches</i>	<i>inches</i>	<i>inches</i>	<i>inches</i>	<i>inches</i>	<i>inches</i>			<i>inches</i>
# GBS-F-2505RH	25.0	5.00	38.00	62.00	7.00	46.00	14.00	M6	22.4 / 9.5	8.0 / 7.0 / 8.0 / 50.0
	<i>0.984</i>	<i>0.197</i>	<i>1.496</i>	<i>2.441</i>	<i>0.276</i>	<i>1.811</i>	<i>0.551</i>			
# GBS-F-3205RH	32.0	5.00	45.00	70.00	7.00	59.00	16.00	M6	49.0 / 17.0	10.0 / 8.0 / 8.0 / 58.0
	<i>1.260</i>	<i>0.197</i>	<i>1.772</i>	<i>2.756</i>	<i>0.276</i>	<i>2.323</i>	<i>0.630</i>			
# GBS-F-3210RH	32.0	10.00	53.00	80.00	7.00	73.00	16.00	M8x1.0	56.0 / 25.7	10.0 / 8.0 / 8.0 / 68.0
	<i>1.260</i>	<i>0.394</i>	<i>2.087</i>	<i>3.150</i>	<i>0.276</i>	<i>2.874</i>	<i>0.630</i>			
# GBS-F-4005RH	40.0	5.00	53.00	80.00	7.00	59.00	16.00	M6	63.5 / 19.0	10.0 / 8.0 / 8.0 / 68.0
	<i>1.575</i>	<i>0.197</i>	<i>2.087</i>	<i>3.150</i>	<i>0.276</i>	<i>2.323</i>	<i>0.630</i>			
# GBS-F-4010RH	40.0	10.00	63.00	95.00	9.00	73.00	16.00	M8x1.0	70.0 / 30.0	10.0 / 8.0 / 8.0 / 78.0
	<i>1.575</i>	<i>0.394</i>	<i>2.480</i>	<i>3.740</i>	<i>0.354</i>	<i>2.874</i>	<i>0.630</i>			

Indicates item not stocked at time of printing - Please enquire for lead time

E&OE Pricing and all details subject to change without notice - Copyright Miniature Bearings Australia Pty Ltd

MBA Size Listings are a guide to sizes only and must not be solely relied on for critical design information.



DISTRIBUTED BY

Ask us to put your name and address here

<http://www.minibearings.com.au/product>

Ph +61 7 3245 7977

Fax +61 7 3245 1017

Catalogue requests to catalogues@minibearings.com.au

