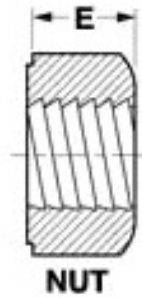
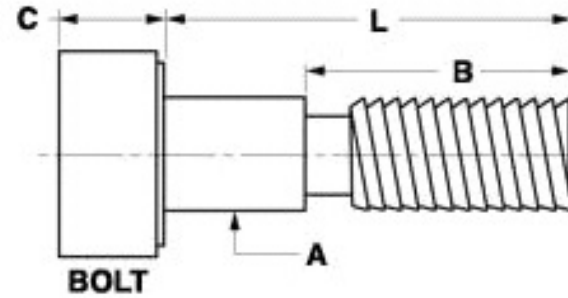




MBA

Shaftloc-tm Clamp Type A



Simple effective component clamping

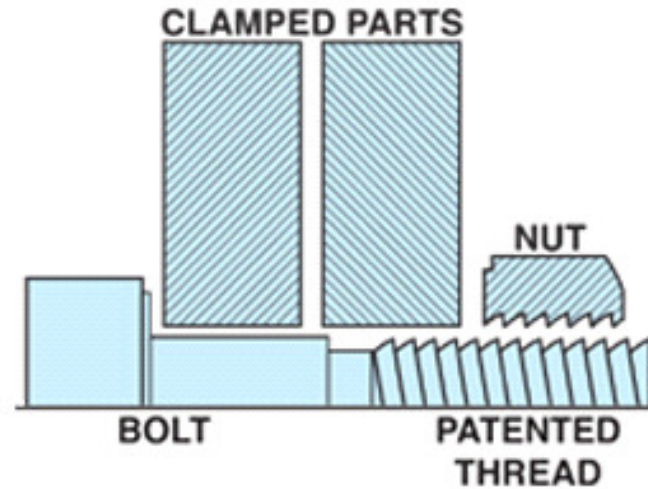
Passivated 416 Stainless Steel

Simple two part screw together system clamps parts securely together.

Vibration resistant. Employing a special asymmetric thread to self-lock when the nut encounters resistance.

The nut turns freely until it contacts the parts being clamped together.

Additional turns wedge the parts into a locked and vibration resistant condition.



Shaftloc-tm Clamp Type A

Part Number	Shoulder Diameter (-0.05) (D) mm	Shank Length (L) mm	Head Thickness (C) mm	Across Flats (D) mm	Nut Length (E) mm	Thread Length (B) mm
-------------	----------------------------------	---------------------	-----------------------	---------------------	-------------------	----------------------

Indicates item not stocked at time of printing - Please enquire for lead time

E&OE Pricing and all details subject to change without notice - Copyright Miniature Bearings Australia Pty Ltd

MBA Size Listings are a guide to sizes only and must not be solely relied on for critical design information.

	<i>inches</i>	<i>inches</i>	<i>inches</i>	<i>inches</i>	<i>inches</i>	<i>inches</i>
# SLVA06351905	6.35 <i>0.250</i>	19.05 <i>0.750</i>	4.06 <i>0.160</i>	11.18 <i>0.440</i>	.23 <i>0.009</i>	19.05 <i>0.750</i>
# SLVA06352540	6.35 <i>0.250</i>	25.40 <i>1.000</i>	4.06 <i>0.160</i>	11.18 <i>0.440</i>	.23 <i>0.009</i>	19.05 <i>0.750</i>
# SLVA06353175	6.35 <i>0.250</i>	31.75 <i>1.250</i>	4.06 <i>0.160</i>	11.18 <i>0.440</i>	.23 <i>0.009</i>	19.05 <i>0.750</i>
# SLVA06501900	6.500 <i>0.256</i>	19.000 <i>0.748</i>	4.000 <i>0.157</i>	10.00 <i>0.394</i>	6.1 <i>0.240</i>	19.0 <i>0.748</i>
# SLVA06502500	6.500 <i>0.256</i>	25.000 <i>0.984</i>	4.000 <i>0.157</i>	10.00 <i>0.394</i>	6.1 <i>0.240</i>	19.0 <i>0.748</i>
# SLVA06503200	6.500 <i>0.256</i>	32.000 <i>1.260</i>	4.000 <i>0.157</i>	10.00 <i>0.394</i>	6.1 <i>0.240</i>	19.0 <i>0.748</i>
# SLVA07941905	7.938 <i>0.313</i>	19.05 <i>0.750</i>	5.08 <i>0.200</i>	12.70 <i>0.500</i>	.27 <i>0.011</i>	19.05 <i>0.750</i>
# SLVA07942540	7.938 <i>0.313</i>	25.40 <i>1.000</i>	5.08 <i>0.200</i>	12.70 <i>0.500</i>	.27 <i>0.011</i>	19.05 <i>0.750</i>
# SLVA07943175	7.938 <i>0.313</i>	31.75 <i>1.250</i>	5.08 <i>0.200</i>	12.70 <i>0.500</i>	.27 <i>0.011</i>	19.05 <i>0.750</i>
# SLVA08002000	8.000 <i>0.315</i>	20.000 <i>0.787</i>	5.000 <i>0.197</i>	14.00 <i>0.551</i>	7.0 <i>0.276</i>	20.0 <i>0.787</i>
# SLVA08002500	8.000 <i>0.315</i>	25.000 <i>0.984</i>	5.000 <i>0.197</i>	14.00 <i>0.551</i>	7.0 <i>0.276</i>	20.0 <i>0.787</i>

Indicates item not stocked at time of printing - Please enquire for lead time
E&OE Pricing and all details subject to change without notice - Copyright Miniature Bearings Australia Pty Ltd
MBA Size Listings are a guide to sizes only and must not be solely relied on for critical design information.

Shaftloc-tm Clamp Type A

Part Number	Shoulder Diameter (- 0.05) (D) mm	Shank Length (L) mm	Head Thickness (C) mm	Across Flats (D) mm	Nut Length (E) mm	Thread Length (B) mm
	<i>inches</i>	<i>inches</i>	<i>inches</i>	<i>inches</i>	<i>inches</i>	<i>inches</i>
# SLVA08003200	8.000 <i>0.315</i>	32.000 <i>1.260</i>	5.000 <i>0.197</i>	14.00 <i>0.551</i>	7.0 <i>0.276</i>	20.0 <i>0.787</i>
# SLVA09532540	9.525 <i>0.375</i>	25.40 <i>1.000</i>	7.37 <i>0.290</i>	14.22 <i>0.560</i>	.34 <i>0.013</i>	25.40 <i>1.000</i>
# SLVA09533175	9.525 <i>0.375</i>	31.75 <i>1.250</i>	7.37 <i>0.290</i>	14.22 <i>0.560</i>	.34 <i>0.013</i>	25.40 <i>1.000</i>
# SLVA09533810	9.525 <i>0.375</i>	38.10 <i>1.500</i>	7.37 <i>0.290</i>	14.22 <i>0.560</i>	.34 <i>0.013</i>	25.40 <i>1.000</i>
# SLVA10002500	10.000 <i>0.394</i>	25.000 <i>0.984</i>	7.000 <i>0.276</i>	16.00 <i>0.630</i>	8.9 <i>0.350</i>	25.0 <i>0.984</i>
# SLVA10003200	10.000 <i>0.394</i>	32.000 <i>1.260</i>	7.000 <i>0.276</i>	16.00 <i>0.630</i>	8.9 <i>0.350</i>	25.0 <i>0.984</i>
# SLVA10003800	10.000 <i>0.394</i>	38.000 <i>1.496</i>	7.000 <i>0.276</i>	16.00 <i>0.630</i>	8.9 <i>0.350</i>	25.0 <i>0.984</i>
# SLVA12703175	12.70 <i>0.500</i>	31.75 <i>1.250</i>	8.13 <i>0.320</i>	19.05 <i>0.750</i>	.45 <i>0.018</i>	31.75 <i>1.250</i>
# SLVA12703810	12.70 <i>0.500</i>	38.10 <i>1.500</i>	8.13 <i>0.320</i>	19.05 <i>0.750</i>	.45 <i>0.018</i>	31.75 <i>1.250</i>
# SLVA13003200	13.000 <i>0.512</i>	32.000 <i>1.260</i>	8.000 <i>0.315</i>	18.00 <i>0.709</i>	11.7 <i>0.461</i>	32.0 <i>1.260</i>

Indicates item not stocked at time of printing - Please enquire for lead time

E&OE Pricing and all details subject to change without notice - Copyright Miniature Bearings Australia Pty Ltd

MBA Size Listings are a guide to sizes only and must not be solely relied on for critical design information.

Shaftloc-tm Clamp Type A

Part Number	Shoulder Diameter (- 0.05) (D) mm	Shank Length (L) mm	Head Thickness (C) mm	Across Flats (D) mm	Nut Length (E) mm	Thread Length (B) mm
	<i>inches</i>	<i>inches</i>	<i>inches</i>	<i>inches</i>	<i>inches</i>	<i>inches</i>
# SLVA13003800	13.000 <i>0.512</i>	38.000 <i>1.496</i>	8.000 <i>0.315</i>	18.00 <i>0.709</i>	11.7 <i>0.461</i>	32.0 <i>1.260</i>
# SLVA13004500	13.000 <i>0.512</i>	45.000 <i>1.772</i>	8.000 <i>0.315</i>	18.00 <i>0.709</i>	11.7 <i>0.461</i>	32.0 <i>1.260</i>

Indicates item not stocked at time of printing - Please enquire for lead time

E&OE Pricing and all details subject to change without notice - Copyright Miniature Bearings Australia Pty Ltd

MBA Size Listings are a guide to sizes only and must not be solely relied on for critical design information.



DISTRIBUTED BY

Ask us to put your name and address here

<http://www.minibearings.com.au/product>

Ph +61 7 3245 7977

Fax +61 7 3245 1017

Catalogue requests to catalogues@minibearings.com.au

