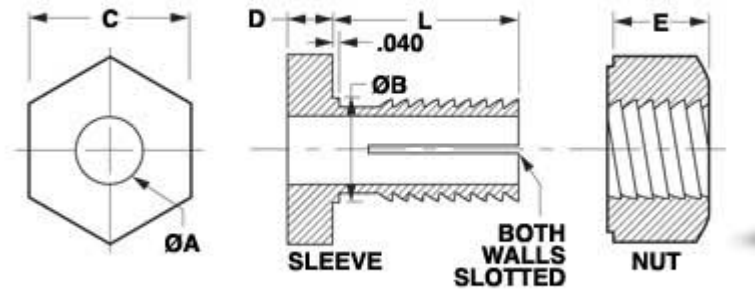


# MBA

## Shaftloc-tm Simple Type M



Simple effective way to lock components onto shafts.

Passivated 416 Stainless Steel

Simple two part screw together system locks parts securely to shaft.

Asymmetric thread geometry produces a large radial clamping force when the nut is tightened

Precision, dynamically balanced and suitable for high speed applications. Diameters A and B concentric within 0.013 T.I.R.

Tightening the nut causes slotted sleeve to contract, gripping the shaft and clamping the component to the sleeve.

### Shaftloc-tm Simple Type M

Part Number	Components Bore (+0.025) (A) mm	Shaftloc Bore (B) mm	Length of sleeve (L) mm	Across Flats (C) mm	Head Thickness (D) mm	Nut Width (E) mm
	<i>inches</i>	<i>inches</i>	<i>inches</i>	<i>inches</i>	<i>inches</i>	<i>inches</i>
# SLVM06350794	7.938 <i>0.313</i>	6.350 <i>0.250</i>	10.67 <i>0.420</i>	12.70 <i>0.500</i>	3.81 <i>0.150</i>	6.85 <i>0.270</i>
# SLVM06001000	10.000 <i>0.394</i>	6.000 <i>0.236</i>	12.000 <i>0.472</i>	14.000 <i>0.551</i>	4.0 <i>0.157</i>	7.0 <i>0.276</i>

# Indicates item not stocked at time of printing - Please enquire for lead time

E&OE Pricing and all details subject to change without notice - Copyright Miniature Bearings Australia Pty Ltd

MBA Size Listings are a guide to sizes only and must not be solely relied on for critical design information.

## Shaftloc-tm Simple Type M

Part Number	Components Bore (+0.025) (A) mm	Shaftloc Bore (B) mm	Length of sleeve (L) mm	Across Flats (C) mm	Head Thickness (D) mm	Nut Width (E) mm
	<i>inches</i>	<i>inches</i>	<i>inches</i>	<i>inches</i>	<i>inches</i>	<i>inches</i>
# SLVM09531270	12.700 <i>0.500</i>	9.525 <i>0.375</i>	15.24 <i>0.600</i>	19.05 <i>0.750</i>	3.81 <i>0.150</i>	11.43 <i>0.450</i>
# SLVM10001400	14.000 <i>0.551</i>	10.000 <i>0.394</i>	16.000 <i>0.630</i>	18.000 <i>0.709</i>	4.0 <i>0.157</i>	12.0 <i>0.472</i>
SLVM12701588	15.875 <i>0.625</i>	12.700 <i>0.500</i>	18.03 <i>0.710</i>	23.88 <i>0.940</i>	5.08 <i>0.200</i>	14.22 <i>0.560</i>
# SLVM12001600	16.000 <i>0.630</i>	12.000 <i>0.472</i>	18.000 <i>0.709</i>	24.000 <i>0.945</i>	5.0 <i>0.197</i>	14.0 <i>0.551</i>

# Indicates item not stocked at time of printing - Please enquire for lead time

E&OE Pricing and all details subject to change without notice - Copyright Miniature Bearings Australia Pty Ltd

MBA Size Listings are a guide to sizes only and must not be solely relied on for critical design information.



DISTRIBUTED BY

Ask us to put your name and address here

<http://www.minibearings.com.au/product>

Ph +61 7 3245 7977

Fax +61 7 3245 1017

Catalogue requests to [catalogues@minibearings.com.au](mailto:catalogues@minibearings.com.au)

