



MBA

Shaftloc™ Sleeves - Single Ended

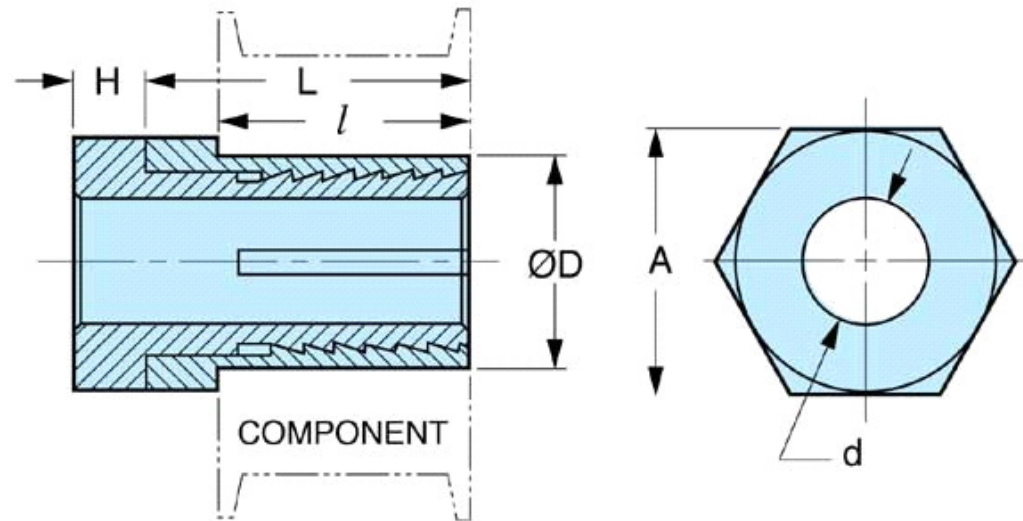
Simple effective way to lock components onto shafts.

416 Stainless Steel

Simple two part screw together system locks parts securely to shaft.

Asymmetric thread geometry produces a large radial clamping force when the nut is tightened

This catalogue to be read in conjunction with information at <http://www.minibearings.com.au/ogue/tech/shaftloc/shaftloc.pdf>



The projections shown are per ISO convention.

Shaftloc™ Sleeves - Single Ended

Part Number	Components Bore (+0.025) (D) mm	Shaftloc Bore (d) mm	Length of component (l) mm	Max Torque Cap. N.m	Length of outer sleeve (L) mm	Head Width Inner Sleeve (H) mm	Hex Size (H) mm
	<i>inches</i>	<i>inches</i>	<i>inches</i>		<i>inches</i>	<i>inches</i>	<i>inches</i>
# SLV-SLC-03.000x06.000x10.000	6.000 <i>0.236</i>	3.000 <i>0.118</i>	10.000 <i>0.394</i>	1.1	13.2 <i>0.520</i>	3.17 <i>0.125</i>	8.00 <i>0.315</i>
# SLV-SLC-03.175x06.350x09.525	6.350 <i>0.250</i>	3.175 <i>0.125</i>	9.525 <i>0.375</i>	1.6	12.7 <i>0.500</i>	3.17 <i>0.125</i>	9.53 <i>0.375</i>

Indicates item not stocked at time of printing - Please enquire for lead time

E&OE Pricing and all details subject to change without notice - Copyright Miniature Bearings Australia Pty Ltd

MBA Size Listings are a guide to sizes only and must not be solely relied on for critical design information.

Shaftloc-tm Sleeves - Single Ended

Part Number	Components Bore (+0.025) (D) mm	Shaftloc Bore (d) mm	Length of component (l) mm	Max Torque Cap. N.m	Length of outer sleeve (L) mm	Head Width Inner Sleeve (H) mm	Hex Size (H) mm
	<i>inches</i>	<i>inches</i>	<i>inches</i>		<i>inches</i>	<i>inches</i>	<i>inches</i>
# SLV-SLC-04.000x08.000x12.000	8.000 <i>0.315</i>	4.000 <i>0.157</i>	12.000 <i>0.472</i>	2.8	15.2 <i>0.598</i>	3.17 <i>0.125</i>	10.00 <i>0.394</i>
SLV-SLC-04.763x09.525x12.700	9.525 <i>0.375</i>	4.763 <i>0.188</i>	12.700 <i>0.500</i>	6.2	16.7 <i>0.657</i>	3.97 <i>0.156</i>	12.70 <i>0.500</i>
SLV-SLC-06.350x09.525x12.700	9.525 <i>0.375</i>	6.350 <i>0.250</i>	12.700 <i>0.500</i>	11.2	16.7 <i>0.657</i>	3.97 <i>0.156</i>	12.70 <i>0.500</i>
# SLV-SLC-06.000x10.000x12.000	10.000 <i>0.394</i>	6.000 <i>0.236</i>	12.000 <i>0.472</i>	3.3	15.6 <i>0.614</i>	3.60 <i>0.142</i>	13.00 <i>0.512</i>
# SLV-SLC-08.000x12.000x16.000	12.000 <i>0.472</i>	8.000 <i>0.315</i>	16.000 <i>0.630</i>	9.9	20.0 <i>0.787</i>	4.00 <i>0.157</i>	15.00 <i>0.591</i>
# SLV-SLC-06.350x12.700x15.875	12.700 <i>0.500</i>	6.350 <i>0.250</i>	15.875 <i>0.625</i>	22.5	20.6 <i>0.811</i>	4.76 <i>0.187</i>	15.88 <i>0.625</i>
# SLV-SLC-09.525x12.700x15.875	12.700 <i>0.500</i>	9.525 <i>0.375</i>	15.875 <i>0.625</i>	28.0	20.6 <i>0.811</i>	4.76 <i>0.187</i>	15.88 <i>0.625</i>
# SLV-SLC-09.525x15.875x19.050	15.875 <i>0.625</i>	9.525 <i>0.375</i>	19.050 <i>0.750</i>	28.0	23.8 <i>0.937</i>	5.56 <i>0.219</i>	19.05 <i>0.750</i>
# SLV-SLC-10.000x16.000x16.000	16.000 <i>0.630</i>	10.000 <i>0.394</i>	16.000 <i>0.630</i>	11.0	20.0 <i>0.787</i>	4.00 <i>0.157</i>	19.00 <i>0.748</i>
SLV-SLC-12.000x18.000x20.000	18.000 <i>0.709</i>	12.000 <i>0.472</i>	20.000 <i>0.787</i>	16.5	25.5 <i>1.004</i>	5.60 <i>0.220</i>	21.00 <i>0.827</i>

Indicates item not stocked at time of printing - Please enquire for lead time

E&OE Pricing and all details subject to change without notice - Copyright Miniature Bearings Australia Pty Ltd

MBA Size Listings are a guide to sizes only and must not be solely relied on for critical design information.

Shaftloc-tm Sleeves - Single Ended

Part Number	Components Bore (+0.025) (D) mm	Shaftloc Bore (d) mm	Length of component (l) mm	Max Torque Cap. N.m	Length of outer sleeve (L) mm	Head Width Inner Sleeve (H) mm	Hex Size (H) mm
	<i>inches</i>	<i>inches</i>	<i>inches</i>		<i>inches</i>	<i>inches</i>	<i>inches</i>
# SLV-SLC-12.700x19.050x19.050	19.050 <i>0.750</i>	12.700 <i>0.500</i>	19.050 <i>0.750</i>	28.0	23.8 <i>0.937</i>	5.56 <i>0.219</i>	22.23 <i>0.875</i>

Indicates item not stocked at time of printing - Please enquire for lead time

E&OE Pricing and all details subject to change without notice - Copyright Miniature Bearings Australia Pty Ltd

MBA Size Listings are a guide to sizes only and must not be solely relied on for critical design information.



DISTRIBUTED BY

Ask us to put your name and address here

<http://www.minibearings.com.au/product>

Ph +61 7 3245 7977

Fax +61 7 3245 1017

Catalogue requests to catalogues@minibearings.com.au
