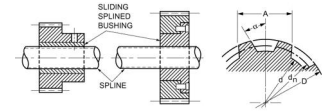




MBA

Splined Shafts



Match with same size internal splined bushes.

Match bushes and shafts by Major Diameter.

Splined Shafts

Part Number	Nominal Size (dn) mm	Major Diameter (D) mm	Length (L) mm	Minor Diameter (d) mm	Number of Splines No.	Material	Spline Angle Deg.	Straddled Width (A) mm
	<i>inches</i>	<i>inches</i>	<i>inches</i>	<i>inches</i>				<i>inches</i>
# SPLEX096-16x0305-CS	8.7	9.627	304.8	7.899	16	Carbon Steel C-12L14	22.5	2.515 (-0.015 / 0.050)
	<i>0.343</i>	<i>0.379</i>	<i>12.000</i>	<i>0.311</i>				
SPLEX096-16x0305-416	8.7	9.627	304.8	7.899	16	416 Stainless Steel	22.5	2.515 (-0.015 / 0.050)
	<i>0.343</i>	<i>0.379</i>	<i>12.000</i>	<i>0.311</i>				
# SPLEX096-16x0610-416	8.7	9.627	609.6	7.899	16	416 Stainless Steel	22.5	2.515 (-0.015 / 0.050)
	<i>0.343</i>	<i>0.379</i>	<i>24.000</i>	<i>0.311</i>				

Indicates item not stocked at time of printing - Please enquire for lead time

E&OE Pricing and all details subject to change without notice - Copyright Miniature Bearings Australia Pty Ltd

MBA Size Listings are a guide to sizes only and must not be solely relied on for critical design information.

Splined Shafts

Part Number	Nominal Size (dn) mm	Major Diameter (D) mm	Length (L) mm	Minor Diameter (d) mm	Number of Splines No.	Material	Spline Angle Deg.	Straddled Width (A) mm
	<i>inches</i>	<i>inches</i>	<i>inches</i>	<i>inches</i>				<i>inches</i>
# SPLEX096-16x0610-CS	8.7 <i>0.343</i>	9.627 <i>0.379</i>	609.6 <i>24.000</i>	7.899 <i>0.311</i>	16	Carbon Steel C-12L14	22.5	2.515 (-0.015 / 0.050)
# SPLEX096-16x0914-416	8.7 <i>0.343</i>	9.627 <i>0.379</i>	914.4 <i>36.000</i>	7.899 <i>0.311</i>	16	416 Stainless Steel	22.5	2.515 (-0.015 / 0.050)
# SPLEX096-16x0914-CS	8.7 <i>0.343</i>	9.627 <i>0.379</i>	914.4 <i>36.000</i>	7.899 <i>0.311</i>	16	Carbon Steel C-12L14	22.5	2.515 (-0.015 / 0.050)
# SPLEX096-16x1219-416	8.7 <i>0.343</i>	9.627 <i>0.379</i>	1219.2 <i>48.000</i>	7.899 <i>0.311</i>	16	416 Stainless Steel	22.5	2.515 (-0.015 / 0.050)
# SPLEX096-16x1219-CS	8.7 <i>0.343</i>	9.627 <i>0.379</i>	1219.2 <i>48.000</i>	7.899 <i>0.311</i>	16	Carbon Steel C-12L14	22.5	2.515 (-0.015 / 0.050)
# SPLEX128-16x0305-CS	11.9 <i>0.469</i>	12.827 <i>0.505</i>	304.8 <i>12.000</i>	10.871 <i>0.428</i>	16	Carbon Steel C-12L14	22.5	3.480 (-0.015 / 0.050)
# SPLEX128-16x0610-416	11.9 <i>0.469</i>	12.827 <i>0.505</i>	609.6 <i>24.000</i>	10.871 <i>0.428</i>	16	416 Stainless Steel	22.5	3.480 (-0.015 / 0.050)
# SPLEX128-16x0610-CS	11.9 <i>0.469</i>	12.827 <i>0.505</i>	609.6 <i>24.000</i>	10.871 <i>0.428</i>	16	Carbon Steel C-12L14	22.5	3.480 (-0.015 / 0.050)

Indicates item not stocked at time of printing - Please enquire for lead time

E&OE Pricing and all details subject to change without notice - Copyright Miniature Bearings Australia Pty Ltd

MBA Size Listings are a guide to sizes only and must not be solely relied on for critical design information.

Splined Shafts

Part Number	Nominal Size (dn) mm	Major Diameter (D) mm	Length (L) mm	Minor Diameter (d) mm	Number of Splines No.	Material	Spline Angle Deg.	Straddled Width (A) mm
	<i>inches</i>	<i>inches</i>	<i>inches</i>	<i>inches</i>				<i>inches</i>
# SPLEX128-16x0914-CS	11.9 <i>0.469</i>	12.827 <i>0.505</i>	914.4 <i>36.000</i>	10.871 <i>0.428</i>	16	Carbon Steel C-12L14	22.5	3.480 (-0.015 / 0.050)
# SPLEX128-16x1219-CS	11.9 <i>0.469</i>	12.827 <i>0.505</i>	1219.2 <i>48.000</i>	10.871 <i>0.428</i>	16	Carbon Steel C-12L14	22.5	3.480 (-0.015 / 0.050)
# SPLEX128-16x1219-416	11.9 <i>0.469</i>	12.827 <i>0.505</i>	1219.2 <i>48.000</i>	10.871 <i>0.428</i>	16	416 Stainless Steel	22.5	3.480 (-0.015 / 0.050)
# SPLEX128-16x0050-ST	12.00 <i>0.472</i>	12.80 <i>0.504</i>	50.00 <i>1.969</i>	10.90 <i>0.429</i>	16.00	Carbon Steel C-12L14	22.50	3.483 (-0.015 / 0.050)
# SPLEX128-16x0100-ST	12.00 <i>0.472</i>	12.80 <i>0.504</i>	100.00 <i>3.937</i>	10.90 <i>0.429</i>	16.00	Carbon Steel C-12L14	22.50	3.483 (-0.015 / 0.050)
# SPLEX128-16x0150-ST	12.00 <i>0.472</i>	12.80 <i>0.504</i>	150.00 <i>5.906</i>	10.90 <i>0.429</i>	16.00	Carbon Steel C-12L14	22.50	3.483 (-0.015 / 0.050)
# SPLEX125-06x1000-CS	12.5 <i>0.492</i>	14.00 <i>0.551</i>	1000.0 <i>39.370</i>	11.00 <i>0.433</i>	6	Steel (C40) 080M40	-	Not Specified
# SPLEX145-06x1000-CS	14.5 <i>0.571</i>	16.00 <i>0.630</i>	1000.0 <i>39.370</i>	13.00 <i>0.512</i>	6	Steel (C40) 080M40	-	Not Specified

Indicates item not stocked at time of printing - Please enquire for lead time

E&OE Pricing and all details subject to change without notice - Copyright Miniature Bearings Australia Pty Ltd

MBA Size Listings are a guide to sizes only and must not be solely relied on for critical design information.

Splined Shafts

Part Number	Nominal Size (dn) mm	Major Diameter (D) mm	Length (L) mm	Minor Diameter (d) mm	Number of Splines No.	Material	Spline Angle Deg.	Straddled Width (A) mm
	<i>inches</i>	<i>inches</i>	<i>inches</i>	<i>inches</i>				<i>inches</i>
# SPLEX161-16x0050-ST	15.00 <i>0.591</i>	16.10 <i>0.634</i>	50.00 <i>1.969</i>	13.50 <i>0.531</i>	16.00	Carbon Steel C-12L14	22.50	4.354 (-0.015 / 0.050)
# SPLEX161-16x0100-ST	15.00 <i>0.591</i>	16.10 <i>0.634</i>	100.00 <i>3.937</i>	13.50 <i>0.531</i>	16.00	Carbon Steel C-12L14	22.50	4.354 (-0.015 / 0.050)
# SPLEX161-16x0150-ST	15.00 <i>0.591</i>	16.10 <i>0.634</i>	150.00 <i>5.906</i>	13.50 <i>0.531</i>	16.00	Carbon Steel C-12L14	22.50	4.354 (-0.015 / 0.050)
# SPLEX167-08x0017-ST	15.00 <i>0.591</i>	16.67 <i>0.656</i>	17.00 <i>0.669</i>	13.00 <i>0.512</i>	8.00	Carbon Steel C-12L14	-	Not Specified
# SPLEX171-16x0610-416	15.9 <i>0.626</i>	17.145 <i>0.675</i>	609.6 <i>24.000</i>	14.681 <i>0.578</i>	16	416 Stainless Steel	22.5	4.597 (-0.015 / 0.050)
# SPLEX171-16x0610-CS	15.9 <i>0.626</i>	17.145 <i>0.675</i>	609.6 <i>24.000</i>	14.681 <i>0.578</i>	16	Carbon Steel C-12L14	22.5	4.597 (-0.015 / 0.050)
# SPLEX171-16x1219-CS	15.9 <i>0.626</i>	17.145 <i>0.675</i>	1219.2 <i>48.000</i>	14.681 <i>0.578</i>	16	Carbon Steel C-12L14	22.5	4.597 (-0.015 / 0.050)
# SPLEX171-16x1219-416	15.9 <i>0.626</i>	17.145 <i>0.675</i>	1219.2 <i>48.000</i>	14.681 <i>0.578</i>	16	416 Stainless Steel	22.5	4.597 (-0.015 / 0.050)

Indicates item not stocked at time of printing - Please enquire for lead time

E&OE Pricing and all details subject to change without notice - Copyright Miniature Bearings Australia Pty Ltd

MBA Size Listings are a guide to sizes only and must not be solely relied on for critical design information.

Splined Shafts

Part Number	Nominal Size (dn) mm	Major Diameter (D) mm	Length (L) mm	Minor Diameter (d) mm	Number of Splines No.	Material	Spline Angle Deg.	Straddled Width (A) mm
	<i>inches</i>	<i>inches</i>	<i>inches</i>	<i>inches</i>				<i>inches</i>
# SPLEX171-16x1829-416	15.9 <i>0.626</i>	17.145 <i>0.675</i>	1828.8 <i>72.000</i>	14.681 <i>0.578</i>	16	416 Stainless Steel	22.5	4.597 (-0.015 / 0.050)
# SPLEX171-16x1829-CS	15.9 <i>0.626</i>	17.145 <i>0.675</i>	1828.8 <i>72.000</i>	14.681 <i>0.578</i>	16	Carbon Steel C- 12L14	22.5	4.597 (-0.015 / 0.050)
# SPLEX182-16x0050-ST	17.00 <i>0.669</i>	18.20 <i>0.717</i>	50.00 <i>1.969</i>	15.40 <i>0.606</i>	16.00	Carbon Steel C- 12L14	22.50	4.935 (-0.015 / 0.050)
# SPLEX182-16x0100-ST	17.00 <i>0.669</i>	18.20 <i>0.717</i>	100.00 <i>3.937</i>	15.40 <i>0.606</i>	16.00	Carbon Steel C- 12L14	22.50	4.935 (-0.015 / 0.050)
# SPLEX182-16x0150-ST	17.00 <i>0.669</i>	18.20 <i>0.717</i>	150.00 <i>5.906</i>	15.40 <i>0.606</i>	16.00	Carbon Steel C- 12L14	22.50	4.935 (-0.015 / 0.050)
# SPLEX197-10x0020-ST	18.00 <i>0.709</i>	19.67 <i>0.774</i>	20.00 <i>0.787</i>	15.00 <i>0.591</i>	10.00	Carbon Steel C- 12L14	-	Not Specified
# SPLEX180-06x1000-CS	18.0 <i>0.709</i>	20.00 <i>0.787</i>	1000.0 <i>39.370</i>	16.00 <i>0.630</i>	6	Steel (C40) 080M40	-	Not Specified
# SPLEX205-16x0610-416	19.1 <i>0.752</i>	20.498 <i>0.807</i>	609.6 <i>24.000</i>	17.653 <i>0.695</i>	16	416 Stainless Steel	22.5	5.537 (-0.015 / 0.050)

Indicates item not stocked at time of printing - Please enquire for lead time

E&OE Pricing and all details subject to change without notice - Copyright Miniature Bearings Australia Pty Ltd

MBA Size Listings are a guide to sizes only and must not be solely relied on for critical design information.

Splined Shafts

Part Number	Nominal Size (dn) mm	Major Diameter (D) mm	Length (L) mm	Minor Diameter (d) mm	Number of Splines No.	Material	Spline Angle Deg.	Straddled Width (A) mm
	<i>inches</i>	<i>inches</i>	<i>inches</i>	<i>inches</i>				<i>inches</i>
# SPLEX205-16x0610-CS	19.1 <i>0.752</i>	20.498 <i>0.807</i>	609.6 <i>24.000</i>	17.653 <i>0.695</i>	16	Carbon Steel C-12L14	22.5	5.537 (-0.015 / 0.050)
# SPLEX205-16x1219-416	19.1 <i>0.752</i>	20.498 <i>0.807</i>	1219.2 <i>48.000</i>	17.653 <i>0.695</i>	16	416 Stainless Steel	22.5	5.537 (-0.015 / 0.050)
# SPLEX205-16x1219-CS	19.1 <i>0.752</i>	20.498 <i>0.807</i>	1219.2 <i>48.000</i>	17.653 <i>0.695</i>	16	Carbon Steel C-12L14	22.5	5.537 (-0.015 / 0.050)
# SPLEX205-16x1829-CS	19.1 <i>0.752</i>	20.498 <i>0.807</i>	1828.8 <i>72.000</i>	17.653 <i>0.695</i>	16	Carbon Steel C-12L14	22.5	5.537 (-0.015 / 0.050)
# SPLEX205-16x1829-416	19.1 <i>0.752</i>	20.498 <i>0.807</i>	1828.8 <i>72.000</i>	17.653 <i>0.695</i>	16	416 Stainless Steel	22.5	5.537 (-0.015 / 0.050)
# SPLEX215-16x0050-ST	20.00 <i>0.787</i>	21.50 <i>0.846</i>	50.00 <i>1.969</i>	18.30 <i>0.720</i>	16.00	Carbon Steel C-12L14	22.50	5.806 (-0.015 / 0.050)
# SPLEX215-16x0100-ST	20.00 <i>0.787</i>	21.50 <i>0.846</i>	100.00 <i>3.937</i>	18.30 <i>0.720</i>	16.00	Carbon Steel C-12L14	22.50	5.806 (-0.015 / 0.050)
# SPLEX215-16x0150-ST	20.00 <i>0.787</i>	21.50 <i>0.846</i>	150.00 <i>5.906</i>	18.30 <i>0.720</i>	16.00	Carbon Steel C-12L14	22.50	5.806 (-0.015 / 0.050)

Indicates item not stocked at time of printing - Please enquire for lead time

E&OE Pricing and all details subject to change without notice - Copyright Miniature Bearings Australia Pty Ltd

MBA Size Listings are a guide to sizes only and must not be solely relied on for critical design information.

Splined Shafts

Part Number	Nominal Size (dn) mm	Major Diameter (D) mm	Length (L) mm	Minor Diameter (d) mm	Number of Splines No.	Material	Spline Angle Deg.	Straddled Width (A) mm
	<i>inches</i>	<i>inches</i>	<i>inches</i>	<i>inches</i>				<i>inches</i>
# SPLEX200-06x1000-CS	20.0 <i>0.787</i>	22.00 <i>0.866</i>	1000.0 <i>39.370</i>	18.00 <i>0.709</i>	6	Steel (C40) 080M40	-	Not Specified
# SPLEX247-13x0030-ST	23.00 <i>0.906</i>	24.67 <i>0.971</i>	30.00 <i>1.181</i>	20.00 <i>0.787</i>	13.00	Carbon Steel C- 12L14	-	Not Specified
# SPLEX230-06x1000-CS	23.0 <i>0.906</i>	25.00 <i>0.984</i>	1000.0 <i>39.370</i>	21.00 <i>0.827</i>	6	Steel (C40) 080M40	-	Not Specified
# SPLEX255-06x1000-CS	25.5 <i>1.004</i>	28.00 <i>1.102</i>	1000.0 <i>39.370</i>	23.00 <i>0.906</i>	6	Steel (C40) 080M40	-	Not Specified
# SPLEX297-16x0030-ST	28.00 <i>1.102</i>	29.67 <i>1.168</i>	30.00 <i>1.181</i>	25.00 <i>0.984</i>	16.00	Carbon Steel C- 12L14	-	Not Specified
# SPLEX290-06x1000-CS	29.0 <i>1.142</i>	32.00 <i>1.260</i>	1000.0 <i>39.370</i>	26.00 <i>1.024</i>	6	Steel (C40) 080M40	-	Not Specified
# SPLEX310-06x1000-CS	31.0 <i>1.220</i>	34.00 <i>1.339</i>	1000.0 <i>39.370</i>	28.00 <i>1.102</i>	6	Steel (C40) 080M40	-	Not Specified
# SPLEX315-06x1000-CS	31.5 <i>1.240</i>	34.94 <i>1.376</i>	1000.0 <i>39.370</i>	28.14 <i>1.108</i>	6	Steel (C40) 080M40	-	Not Specified

Indicates item not stocked at time of printing - Please enquire for lead time

E&OE Pricing and all details subject to change without notice - Copyright Miniature Bearings Australia Pty Ltd

MBA Size Listings are a guide to sizes only and must not be solely relied on for critical design information.

Splined Shafts

Part Number	Nominal Size (dn) mm	Major Diameter (D) mm	Length (L) mm	Minor Diameter (d) mm	Number of Splines No.	Material	Spline Angle Deg.	Straddled Width (A) mm
	<i>inches</i>	<i>inches</i>	<i>inches</i>	<i>inches</i>				<i>inches</i>
# SPLEX350-08x1000-CS	35.0	38.00	1000.0	32.00	8	Steel (C40) 080M40	-	Not Specified
	<i>1.378</i>	<i>1.496</i>	<i>39.370</i>	<i>1.260</i>				
# SPLEX390-08x1000-CS	39.0	42.00	1000.0	36.00	8	Steel (C40) 080M40	-	Not Specified
	<i>1.535</i>	<i>1.654</i>	<i>39.370</i>	<i>1.417</i>				
# SPLEX450-08x1000-CS	45.0	48.00	1000.0	42.00	8	Steel (C40) 080M40	-	Not Specified
	<i>1.772</i>	<i>1.890</i>	<i>39.370</i>	<i>1.654</i>				
# SPLEX500-08x1000-CS	50.0	54.00	1000.0	46.00	8	Steel (C40) 080M40	-	Not Specified
	<i>1.969</i>	<i>2.126</i>	<i>39.370</i>	<i>1.811</i>				

Indicates item not stocked at time of printing - Please enquire for lead time

E&OE Pricing and all details subject to change without notice - Copyright Miniature Bearings Australia Pty Ltd

MBA Size Listings are a guide to sizes only and must not be solely relied on for critical design information.



DISTRIBUTED BY

Ask us to put your name and address here

<http://www.minibearings.com.au/product>

Ph +61 7 3245 7977

Fax +61 7 3245 1017

Catalogue requests to catalogues@minibearings.com.au
