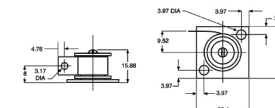




MBA

Spring Assemblies - Small Bracket - RINO



Spring: Stainless Steel 301 S21 Grade.

Base: Aluminium Drum: High Impact Styrene.

Constant force extension springs provide a huge range of application opportunities.

Springs can be extended in excess of 50 times the relaxed length of the spring.

This catalogue to be read in conjunction with information at <http://www.minibearings.com.au/ogue/tech/springs/srsabb.pdf>

Spring Assemblies - Small Bracket - RINO

Part Number	Load \pm 10% KG	Average fatigue Life Cycles	Extension mm <i>inches</i>
# SA278	0.136	35000	508 <i>20.000</i>
SA277	0.286	15000	330 <i>12.992</i>
SA275	0.445	5000	356 <i>14.016</i>

Indicates item not stocked at time of printing - Please enquire for lead time

E&OE Pricing and all details subject to change without notice - Copyright Miniature Bearings Australia Pty Ltd

MBA Size Listings are a guide to sizes only and must not be solely relied on for critical design information.

Spring Assemblies - Small Bracket - RINO

Part Number	Load ± 10% KG	Average fatigue Life Cycles	Extension mm <i>inches</i>
SA276	0.558	5000	445 <i>17.520</i>

Indicates item not stocked at time of printing - Please enquire for lead time
 E&OE Pricing and all details subject to change without notice - Copyright Miniature Bearings Australia Pty Ltd
 MBA Size Listings are a guide to sizes only and must not be solely relied on for critical design information.



DISTRIBUTED BY

Ask us to put your name and address here

<http://www.minibearings.com.au/product>

Ph +61 7 3245 7977

Fax +61 7 3245 1017

Catalogue requests to catalogues@minibearings.com.au
