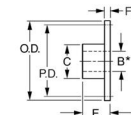




MBA

Sprockets - Ladder Chain



With and without Hubs. Plastic and Steel.

Sprockets - Ladder Chain

Part Number	Pitch (P) mm <i>inches</i>	Tooth Thickness (F.W.) mm <i>inches</i>	Teeth (No.)	Bore (d) mm <i>inches</i>	Overall Width (L) mm <i>inches</i>	Pitch Diameter mm <i>inches</i>	Material	Type	Hub Diameter mm <i>inches</i>	Locking Method
# SPLA038-011-03.00-BR	3.75 <i>0.148</i>	1.60 <i>0.063</i>	11	3.000 <i>0.118</i>	9.60 <i>0.378</i>	13.30 <i>0.524</i>	Brass	With Hub	9.50 <i>0.374</i>	
SPLA038-012-03.00-BR	3.75 <i>0.148</i>	1.60 <i>0.063</i>	12	3.000 <i>0.118</i>	9.60 <i>0.378</i>	14.48 <i>0.570</i>	Brass	With Hub	10.00 <i>0.394</i>	
SPLA038-013-03.00-BR	3.75 <i>0.148</i>	1.60 <i>0.063</i>	13	3.000 <i>0.118</i>	9.60 <i>0.378</i>	15.66 <i>0.617</i>	Brass	With Hub	11.00 <i>0.433</i>	
# SPLA038-014-04.00-BR	3.75 <i>0.148</i>	1.60 <i>0.063</i>	14	4.000 <i>0.157</i>	9.60 <i>0.378</i>	16.84 <i>0.663</i>	Brass	With Hub	12.00 <i>0.472</i>	
# SPLA038-015-04.00-BR	3.75 <i>0.148</i>	1.60 <i>0.063</i>	15	4.000 <i>0.157</i>	9.60 <i>0.378</i>	18.02 <i>0.709</i>	Brass	With Hub	14.00 <i>0.551</i>	

Indicates item not stocked at time of printing - Please enquire for lead time

E&OE Pricing and all details subject to change without notice - Copyright Miniature Bearings Australia Pty Ltd

MBA Size Listings are a guide to sizes only and must not be solely relied on for critical design information.

Sprockets - Ladder Chain

Part Number	Pitch (P) mm	Tooth Thickness (F.W.) mm	Teeth (No.)	Bore (d) mm	Overall Width (L) mm	Pitch Diameter mm	Material	Type	Hub Diameter mm	Locking Method
	<i>inches</i>	<i>inches</i>		<i>inches</i>	<i>inches</i>	<i>inches</i>			<i>inches</i>	
# SPLA038-016-04.00-BR	3.75 <i>0.148</i>	1.60 <i>0.063</i>	16	4.000 <i>0.157</i>	9.60 <i>0.378</i>	19.20 <i>0.756</i>	Brass	With Hub	14.00 <i>0.551</i>	
# SPLA038-018-04.00-BR	3.75 <i>0.148</i>	1.60 <i>0.063</i>	18	4.000 <i>0.157</i>	9.60 <i>0.378</i>	21.58 <i>0.850</i>	Brass	With Hub	16.00 <i>0.630</i>	
SPLA038-020-05.00-BR	3.75 <i>0.148</i>	1.60 <i>0.063</i>	20	5.000 <i>0.197</i>	11.60 <i>0.457</i>	23.95 <i>0.943</i>	Brass	With Hub	18.00 <i>0.709</i>	
# SPLA038-022-05.00-BR	3.75 <i>0.148</i>	1.60 <i>0.063</i>	22	5.000 <i>0.197</i>	11.60 <i>0.457</i>	26.33 <i>1.037</i>	Brass	With Hub	20.00 <i>0.787</i>	
# SPLA038-024-05.00-BR	3.75 <i>0.148</i>	1.60 <i>0.063</i>	24	5.000 <i>0.197</i>	11.60 <i>0.457</i>	28.70 <i>1.130</i>	Brass	With Hub	20.00 <i>0.787</i>	
# SPLA038-026-06.00-BR	3.75 <i>0.148</i>	1.60 <i>0.063</i>	26	6.000 <i>0.236</i>	11.60 <i>0.457</i>	31.08 <i>1.224</i>	Brass	With Hub	20.00 <i>0.787</i>	
# SPLA038-028-06.00-BR	3.75 <i>0.148</i>	1.60 <i>0.063</i>	28	6.000 <i>0.236</i>	11.60 <i>0.457</i>	33.46 <i>1.317</i>	Brass	With Hub	20.00 <i>0.787</i>	
# SPLA038-032-08.00-BRP	3.75 <i>0.148</i>	1.60 <i>0.063</i>	32	8.000 <i>0.315</i>	1.60 <i>0.063</i>	38.22 <i>1.505</i>	Brass	Plain - No Insert	Hubless	
# SPLA038-034-08.00-BRP	3.75 <i>0.148</i>	1.60 <i>0.063</i>	34	8.000 <i>0.315</i>	1.60 <i>0.063</i>	40.61 <i>1.599</i>	Brass	Plain - No Insert	Hubless	

Indicates item not stocked at time of printing - Please enquire for lead time

E&OE Pricing and all details subject to change without notice - Copyright Miniature Bearings Australia Pty Ltd

MBA Size Listings are a guide to sizes only and must not be solely relied on for critical design information.

Sprockets - Ladder Chain

Part Number	Pitch (P) mm	Tooth Thickness (F.W.) mm	Teeth (No.)	Bore (d) mm	Overall Width (L) mm	Pitch Diameter mm	Material	Type	Hub Diameter mm	Locking Method
	<i>inches</i>	<i>inches</i>		<i>inches</i>	<i>inches</i>	<i>inches</i>			<i>inches</i>	
# SPLA038-036-08.00-BRP	3.75	1.60	36	8.000	1.60	42.99	Brass	Plain - No Insert	Hubless	
	<i>0.148</i>	<i>0.063</i>		<i>0.315</i>	<i>0.063</i>	<i>1.693</i>				
SPLA038-040-08.00-BRP	3.75	1.60	40	8.000	1.60	47.75	Brass	Plain - No Insert	Hubless	
	<i>0.148</i>	<i>0.063</i>		<i>0.315</i>	<i>0.063</i>	<i>1.880</i>				
# SPLA038-048-08.00-BRP	3.75	1.60	48	8.000	1.60	57.28	Brass	Plain - No Insert	Hubless	
	<i>0.148</i>	<i>0.063</i>		<i>0.315</i>	<i>0.063</i>	<i>2.255</i>				
SPLA038-010-03.00-BR	3.75	1.60	10	3.000 (+0.014 / -0.000)	9.60		Brass	With Hub	9.500	M3 Set Screw
	<i>0.148</i>	<i>0.063</i>			<i>0.378</i>				<i>0.374</i>	
SPLA038-030-06.00-BR	3.75	1.60	30	6.000 (+0.018 / -0.000)	11.60		Brass	With Hub	20.000	M3 Set Screw
	<i>0.148</i>	<i>0.063</i>			<i>0.457</i>				<i>0.787</i>	
# SPLA042-006-03.18-ACE	4.24 (SIZE 21)	1.70	6	3.175	7.87	8.48	Acetal - Black	Plain - No Insert	6.25	
		<i>0.067</i>		<i>0.125</i>	<i>0.310</i>	<i>0.334</i>			<i>0.246</i>	
# SPLA042-008-03.18-ACE	4.24 (SIZE 21)	1.70	8	3.175	7.87	11.07	Acetal - Black	Plain - No Insert	6.25	
		<i>0.067</i>		<i>0.125</i>	<i>0.310</i>	<i>0.436</i>			<i>0.246</i>	
# SPLA042-009-03.18-ACE	4.24 (SIZE 21)	1.70	9	3.175	7.87	12.40	Acetal - Black	Plain - No Insert	6.25	
		<i>0.067</i>		<i>0.125</i>	<i>0.310</i>	<i>0.488</i>			<i>0.246</i>	

Indicates item not stocked at time of printing - Please enquire for lead time

E&OE Pricing and all details subject to change without notice - Copyright Miniature Bearings Australia Pty Ltd

MBA Size Listings are a guide to sizes only and must not be solely relied on for critical design information.

Sprockets - Ladder Chain

Part Number	Pitch (P) mm <i>inches</i>	Tooth Thickness (F.W.) mm <i>inches</i>	Teeth (No.)	Bore (d) mm <i>inches</i>	Overall Width (L) mm <i>inches</i>	Pitch Diameter mm <i>inches</i>	Material	Type	Hub Diameter mm <i>inches</i>	Locking Method
# SPLA042-010-03.18-ACB	4.24 (SIZE 21)	1.70 <i>0.067</i>	10	3.175 <i>0.125</i>	7.87 <i>0.310</i>	13.72 <i>0.540</i>	Acetal - Black	Brass Insert - Set Screw	9.40 <i>0.370</i>	
# SPLA042-010-03.18-ACE	4.24 (SIZE 21)	1.70 <i>0.067</i>	10	3.175 <i>0.125</i>	7.87 <i>0.310</i>	13.72 <i>0.540</i>	Acetal - Black	Plain - No Insert	6.25 <i>0.246</i>	
SPLA042-010-06.35-ACE	4.24 (SIZE 21)	1.70 <i>0.067</i>	10	6.350 <i>0.250</i>	7.87 <i>0.310</i>	13.72 <i>0.540</i>	Acetal - Black	Plain - No Insert	9.40 <i>0.370</i>	
# SPLA042-010-04.78-ACE	4.24 (SIZE 21)	1.70 <i>0.067</i>	10	4.775 <i>0.188</i>	7.87 <i>0.310</i>	13.72 <i>0.540</i>	Acetal - Black	Plain - No Insert	7.87 <i>0.310</i>	
# SPLA042-010-04.78-ACB	4.24 (SIZE 21)	1.70 <i>0.067</i>	10	4.775 <i>0.188</i>	7.87 <i>0.310</i>	13.72 <i>0.540</i>	Acetal - Black	Brass Insert - Set Screw	9.40 <i>0.370</i>	
# SPLA042-012-04.78-ACB	4.24 (SIZE 21)	1.70 <i>0.067</i>	12	4.775 <i>0.188</i>	7.87 <i>0.310</i>	16.41 <i>0.646</i>	Acetal - Black	Brass Insert - Set Screw	9.40 <i>0.370</i>	
# SPLA042-012-03.18-ACB	4.24 (SIZE 21)	1.70 <i>0.067</i>	12	3.175 <i>0.125</i>	7.87 <i>0.310</i>	16.41 <i>0.646</i>	Acetal - Black	Brass Insert - Set Screw	9.40 <i>0.370</i>	
# SPLA042-012-03.18-ACE	4.24 (SIZE 21)	1.70 <i>0.067</i>	12	3.175 <i>0.125</i>	7.87 <i>0.310</i>	16.41 <i>0.646</i>	Acetal - Black	Plain - No Insert	6.25 <i>0.246</i>	

Indicates item not stocked at time of printing - Please enquire for lead time

E&OE Pricing and all details subject to change without notice - Copyright Miniature Bearings Australia Pty Ltd

MBA Size Listings are a guide to sizes only and must not be solely relied on for critical design information.

Sprockets - Ladder Chain

Part Number	Pitch (P) mm	Tooth Thickness (F.W.) mm	Teeth (No.)	Bore (d) mm	Overall Width (L) mm	Pitch Diameter mm	Material	Type	Hub Diameter mm	Locking Method
	<i>inches</i>	<i>inches</i>		<i>inches</i>	<i>inches</i>	<i>inches</i>			<i>inches</i>	
# SPLA042-012-06.35-ACE	4.24 (SIZE 21)	1.70	12	6.350	7.87	16.41	Acetal - Black	Plain - No Insert	9.40	
		<i>0.067</i>		<i>0.250</i>	<i>0.310</i>	<i>0.646</i>			<i>0.370</i>	
# SPLA042-012-04.78-ACE	4.24 (SIZE 21)	1.70	12	4.775	7.87	16.41	Acetal - Black	Plain - No Insert	7.87	
		<i>0.067</i>		<i>0.188</i>	<i>0.310</i>	<i>0.646</i>			<i>0.310</i>	
# SPLA042-013-06.35-ACE	4.24 (SIZE 21)	1.70	13	6.350	7.87	17.70	Acetal - Black	Plain - No Insert	9.40	
		<i>0.067</i>		<i>0.250</i>	<i>0.310</i>	<i>0.697</i>			<i>0.370</i>	
# SPLA042-013-04.78-ACE	4.24 (SIZE 21)	1.70	13	4.775	7.87	17.70	Acetal - Black	Plain - No Insert	7.87	
		<i>0.067</i>		<i>0.188</i>	<i>0.310</i>	<i>0.697</i>			<i>0.310</i>	
# SPLA042-013-04.78-ACB	4.24 (SIZE 21)	1.70	13	4.775	7.87	17.70	Acetal - Black	Brass Insert - Set Screw	9.40	
		<i>0.067</i>		<i>0.188</i>	<i>0.310</i>	<i>0.697</i>			<i>0.370</i>	
# SPLA042-013-03.18-ACE	4.24 (SIZE 21)	1.70	13	3.175	7.87	17.70	Acetal - Black	Plain - No Insert	6.25	
		<i>0.067</i>		<i>0.125</i>	<i>0.310</i>	<i>0.697</i>			<i>0.246</i>	
# SPLA042-013-03.18-ACB	4.24 (SIZE 21)	1.70	13	3.175	7.87	17.70	Acetal - Black	Brass Insert - Set Screw	9.40	
		<i>0.067</i>		<i>0.125</i>	<i>0.310</i>	<i>0.697</i>			<i>0.370</i>	
# SPLA042-014-03.18-ACB	4.24 (SIZE 21)	1.70	14	3.175	7.87	19.03	Acetal - Black	Brass Insert - Set Screw	9.40	
		<i>0.067</i>		<i>0.125</i>	<i>0.310</i>	<i>0.749</i>			<i>0.370</i>	

Indicates item not stocked at time of printing - Please enquire for lead time

E&OE Pricing and all details subject to change without notice - Copyright Miniature Bearings Australia Pty Ltd

MBA Size Listings are a guide to sizes only and must not be solely relied on for critical design information.

Sprockets - Ladder Chain

Part Number	Pitch (P) mm <i>inches</i>	Tooth Thickness (F.W.) mm <i>inches</i>	Teeth (No.)	Bore (d) mm <i>inches</i>	Overall Width (L) mm <i>inches</i>	Pitch Diameter mm <i>inches</i>	Material	Type	Hub Diameter mm <i>inches</i>	Locking Method
# SPLA042-014-03.18-ACE	4.24 (SIZE 21)	1.70 <i>0.067</i>	14	3.175 <i>0.125</i>	7.87 <i>0.310</i>	19.03 <i>0.749</i>	Acetal - Black	Plain - No Insert	6.25 <i>0.246</i>	
# SPLA042-014-04.78-ACB	4.24 (SIZE 21)	1.70 <i>0.067</i>	14	4.775 <i>0.188</i>	7.87 <i>0.310</i>	19.03 <i>0.749</i>	Acetal - Black	Brass Insert - Set Screw	9.40 <i>0.370</i>	
# SPLA042-014-04.78-ACE	4.24 (SIZE 21)	1.70 <i>0.067</i>	14	4.775 <i>0.188</i>	7.87 <i>0.310</i>	19.03 <i>0.749</i>	Acetal - Black	Plain - No Insert	7.87 <i>0.310</i>	
# SPLA042-014-06.35-ACE	4.24 (SIZE 21)	1.70 <i>0.067</i>	14	6.350 <i>0.250</i>	7.87 <i>0.310</i>	19.03 <i>0.749</i>	Acetal - Black	Plain - No Insert	9.40 <i>0.370</i>	
# SPLA042-015-03.18-ACE	4.24 (SIZE 21)	1.70 <i>0.067</i>	15	3.175 <i>0.125</i>	7.87 <i>0.310</i>	20.37 <i>0.802</i>	Acetal - Black	Plain - No Insert	6.25 <i>0.246</i>	
# SPLA042-015-04.78-ACB	4.24 (SIZE 21)	1.70 <i>0.067</i>	15	4.775 <i>0.188</i>	7.87 <i>0.310</i>	20.37 <i>0.802</i>	Acetal - Black	Brass Insert - Set Screw	9.40 <i>0.370</i>	
# SPLA042-015-04.78-ACE	4.24 (SIZE 21)	1.70 <i>0.067</i>	15	4.775 <i>0.188</i>	7.87 <i>0.310</i>	20.37 <i>0.802</i>	Acetal - Black	Plain - No Insert	7.87 <i>0.310</i>	
# SPLA042-015-06.35-ACE	4.24 (SIZE 21)	1.70 <i>0.067</i>	15	6.350 <i>0.250</i>	7.87 <i>0.310</i>	20.37 <i>0.802</i>	Acetal - Black	Plain - No Insert	9.40 <i>0.370</i>	

Indicates item not stocked at time of printing - Please enquire for lead time

E&OE Pricing and all details subject to change without notice - Copyright Miniature Bearings Australia Pty Ltd

MBA Size Listings are a guide to sizes only and must not be solely relied on for critical design information.

Sprockets - Ladder Chain

Part Number	Pitch (P) mm <i>inches</i>	Tooth Thickness (F.W.) mm <i>inches</i>	Teeth (No.)	Bore (d) mm <i>inches</i>	Overall Width (L) mm <i>inches</i>	Pitch Diameter mm <i>inches</i>	Material	Type	Hub Diameter mm <i>inches</i>	Locking Method
# SPLA042-015-03.18-ACB	4.24 (SIZE 21)	1.70 <i>0.067</i>	15	3.175 <i>0.125</i>	7.87 <i>0.310</i>	20.37 <i>0.802</i>	Acetal - Black	Brass Insert - Set Screw	9.40 <i>0.370</i>	
# SPLA042-016-04.78-ACE	4.24 (SIZE 21)	1.70 <i>0.067</i>	16	4.775 <i>0.188</i>	7.87 <i>0.310</i>	21.72 <i>0.855</i>	Acetal - Black	Plain - No Insert	7.87 <i>0.310</i>	
# SPLA042-016-03.18-ACB	4.24 (SIZE 21)	1.70 <i>0.067</i>	16	3.175 <i>0.125</i>	7.87 <i>0.310</i>	21.72 <i>0.855</i>	Acetal - Black	Brass Insert - Set Screw	12.45 <i>0.490</i>	
# SPLA042-016-09.53-ACE	4.24 (SIZE 21)	1.70 <i>0.067</i>	16	9.525 <i>0.375</i>	7.87 <i>0.310</i>	21.72 <i>0.855</i>	Acetal - Black	Plain - No Insert	12.45 <i>0.490</i>	
# SPLA042-016-06.35-ACE	4.24 (SIZE 21)	1.70 <i>0.067</i>	16	6.350 <i>0.250</i>	7.87 <i>0.310</i>	21.72 <i>0.855</i>	Acetal - Black	Plain - No Insert	9.40 <i>0.370</i>	
SPLA042-016-06.35-ACB	4.24 (SIZE 21)	1.70 <i>0.067</i>	16	6.350 <i>0.250</i>	7.87 <i>0.310</i>	21.72 <i>0.855</i>	Acetal - Black	Brass Insert - Set Screw	12.45 <i>0.490</i>	
# SPLA042-016-03.18-ACE	4.24 (SIZE 21)	1.70 <i>0.067</i>	16	3.175 <i>0.125</i>	7.87 <i>0.310</i>	21.72 <i>0.855</i>	Acetal - Black	Plain - No Insert	6.25 <i>0.246</i>	
# SPLA042-016-04.78-ACB	4.24 (SIZE 21)	1.70 <i>0.067</i>	16	4.775 <i>0.188</i>	7.87 <i>0.310</i>	21.72 <i>0.855</i>	Acetal - Black	Brass Insert - Set Screw	12.45 <i>0.490</i>	

Indicates item not stocked at time of printing - Please enquire for lead time

E&OE Pricing and all details subject to change without notice - Copyright Miniature Bearings Australia Pty Ltd

MBA Size Listings are a guide to sizes only and must not be solely relied on for critical design information.

Sprockets - Ladder Chain

Part Number	Pitch (P) mm	Tooth Thickness (F.W.) mm	Teeth (No.)	Bore (d) mm	Overall Width (L) mm	Pitch Diameter mm	Material	Type	Hub Diameter mm	Locking Method
	<i>inches</i>	<i>inches</i>		<i>inches</i>	<i>inches</i>	<i>inches</i>			<i>inches</i>	
# SPLA042-018-06.35-ACB	4.24 (SIZE 21)	1.70	18	6.350	7.87	24.38	Acetal - Black	Brass Insert - Set Screw	12.45	
		<i>0.067</i>		<i>0.250</i>	<i>0.310</i>	<i>0.960</i>			<i>0.490</i>	
# SPLA042-018-03.18-ACE	4.24 (SIZE 21)	1.70	18	3.175	7.87	24.38	Acetal - Black	Plain - No Insert	6.25	
		<i>0.067</i>		<i>0.125</i>	<i>0.310</i>	<i>0.960</i>			<i>0.246</i>	
# SPLA042-018-09.53-ACE	4.24 (SIZE 21)	1.70	18	9.525	7.87	24.38	Acetal - Black	Plain - No Insert	12.45	
		<i>0.067</i>		<i>0.375</i>	<i>0.310</i>	<i>0.960</i>			<i>0.490</i>	
# SPLA042-018-06.35-ACE	4.24 (SIZE 21)	1.70	18	6.350	7.87	24.38	Acetal - Black	Plain - No Insert	9.40	
		<i>0.067</i>		<i>0.250</i>	<i>0.310</i>	<i>0.960</i>			<i>0.370</i>	
# SPLA042-018-04.78-ACE	4.24 (SIZE 21)	1.70	18	4.775	7.87	24.38	Acetal - Black	Plain - No Insert	7.87	
		<i>0.067</i>		<i>0.188</i>	<i>0.310</i>	<i>0.960</i>			<i>0.310</i>	
# SPLA042-018-04.78-ACB	4.24 (SIZE 21)	1.70	18	4.775	7.87	24.38	Acetal - Black	Brass Insert - Set Screw	12.45	
		<i>0.067</i>		<i>0.188</i>	<i>0.310</i>	<i>0.960</i>			<i>0.490</i>	
SPLA042-018-03.18-ACB	4.24 (SIZE 21)	1.70	18	3.175	7.87	24.38	Acetal - Black	Brass Insert - Set Screw	12.45	
		<i>0.067</i>		<i>0.125</i>	<i>0.310</i>	<i>0.960</i>			<i>0.490</i>	
# SPLA042-020-06.35-ACB	4.24 (SIZE 21)	1.70	20	6.350	7.87	27.08	Acetal - Black	Brass Insert - Set Screw	12.45	
		<i>0.067</i>		<i>0.250</i>	<i>0.310</i>	<i>1.066</i>			<i>0.490</i>	

Indicates item not stocked at time of printing - Please enquire for lead time

E&OE Pricing and all details subject to change without notice - Copyright Miniature Bearings Australia Pty Ltd

MBA Size Listings are a guide to sizes only and must not be solely relied on for critical design information.

Sprockets - Ladder Chain

Part Number	Pitch (P) mm <i>inches</i>	Tooth Thickness (F.W.) mm <i>inches</i>	Teeth (No.)	Bore (d) mm <i>inches</i>	Overall Width (L) mm <i>inches</i>	Pitch Diameter mm <i>inches</i>	Material	Type	Hub Diameter mm <i>inches</i>	Locking Method
# SPLA042-020-03.18-ACE	4.24 (SIZE 21)	1.70 <i>0.067</i>	20	3.175 <i>0.125</i>	7.87 <i>0.310</i>	27.08 <i>1.066</i>	Acetal - Black	Plain - No Insert	6.25 <i>0.246</i>	
# SPLA042-020-09.53-ACE	4.24 (SIZE 21)	1.70 <i>0.067</i>	20	9.525 <i>0.375</i>	7.87 <i>0.310</i>	27.08 <i>1.066</i>	Acetal - Black	Plain - No Insert	12.45 <i>0.490</i>	
# SPLA042-020-04.78-ACE	4.24 (SIZE 21)	1.70 <i>0.067</i>	20	4.775 <i>0.188</i>	7.87 <i>0.310</i>	27.08 <i>1.066</i>	Acetal - Black	Plain - No Insert	7.87 <i>0.310</i>	
# SPLA042-020-06.35-ACE	4.24 (SIZE 21)	1.70 <i>0.067</i>	20	6.350 <i>0.250</i>	7.87 <i>0.310</i>	27.08 <i>1.066</i>	Acetal - Black	Plain - No Insert	9.40 <i>0.370</i>	
# SPLA042-020-03.18-ACB	4.24 (SIZE 21)	1.70 <i>0.067</i>	20	3.175 <i>0.125</i>	7.87 <i>0.310</i>	27.08 <i>1.066</i>	Acetal - Black	Brass Insert - Set Screw	12.45 <i>0.490</i>	
# SPLA042-020-04.78-ACB	4.24 (SIZE 21)	1.70 <i>0.067</i>	20	4.775 <i>0.188</i>	7.87 <i>0.310</i>	27.08 <i>1.066</i>	Acetal - Black	Brass Insert - Set Screw	12.45 <i>0.490</i>	
# SPLA042-021-04.78-ACB	4.24 (SIZE 21)	1.70 <i>0.067</i>	21	4.775 <i>0.188</i>	7.87 <i>0.310</i>	28.42 <i>1.119</i>	Acetal - Black	Brass Insert - Set Screw	12.45 <i>0.490</i>	
# SPLA042-021-06.35-ACB	4.24 (SIZE 21)	1.70 <i>0.067</i>	21	6.350 <i>0.250</i>	7.87 <i>0.310</i>	28.42 <i>1.119</i>	Acetal - Black	Brass Insert - Set Screw	12.45 <i>0.490</i>	

Indicates item not stocked at time of printing - Please enquire for lead time

E&OE Pricing and all details subject to change without notice - Copyright Miniature Bearings Australia Pty Ltd

MBA Size Listings are a guide to sizes only and must not be solely relied on for critical design information.

Sprockets - Ladder Chain

Part Number	Pitch (P) mm <i>inches</i>	Tooth Thickness (F.W.) mm <i>inches</i>	Teeth (No.)	Bore (d) mm <i>inches</i>	Overall Width (L) mm <i>inches</i>	Pitch Diameter mm <i>inches</i>	Material	Type	Hub Diameter mm <i>inches</i>	Locking Method
# SPLA042-021-06.35-ACE	4.24 (SIZE 21)	1.70 <i>0.067</i>	21	6.350 <i>0.250</i>	7.87 <i>0.310</i>	28.42 <i>1.119</i>	Acetal - Black	Plain - No Insert	9.40 <i>0.370</i>	
# SPLA042-021-09.53-ACE	4.24 (SIZE 21)	1.70 <i>0.067</i>	21	9.525 <i>0.375</i>	7.87 <i>0.310</i>	28.42 <i>1.119</i>	Acetal - Black	Plain - No Insert	12.45 <i>0.490</i>	
# SPLA042-021-04.78-ACE	4.24 (SIZE 21)	1.70 <i>0.067</i>	21	4.775 <i>0.188</i>	7.87 <i>0.310</i>	28.42 <i>1.119</i>	Acetal - Black	Plain - No Insert	7.87 <i>0.310</i>	
# SPLA042-022-09.53-ACE	4.24 (SIZE 21)	1.70 <i>0.067</i>	22	9.525 <i>0.375</i>	7.87 <i>0.310</i>	29.77 <i>1.172</i>	Acetal - Black	Plain - No Insert	12.45 <i>0.490</i>	
# SPLA042-022-04.78-ACE	4.24 (SIZE 21)	1.70 <i>0.067</i>	22	4.775 <i>0.188</i>	7.87 <i>0.310</i>	29.77 <i>1.172</i>	Acetal - Black	Plain - No Insert	7.87 <i>0.310</i>	
# SPLA042-022-06.35-ACB	4.24 (SIZE 21)	1.70 <i>0.067</i>	22	6.350 <i>0.250</i>	7.87 <i>0.310</i>	29.77 <i>1.172</i>	Acetal - Black	Brass Insert - Set Screw	12.45 <i>0.490</i>	
# SPLA042-022-06.35-ACE	4.24 (SIZE 21)	1.70 <i>0.067</i>	22	6.350 <i>0.250</i>	7.87 <i>0.310</i>	29.77 <i>1.172</i>	Acetal - Black	Plain - No Insert	9.40 <i>0.370</i>	
# SPLA042-022-04.78-ACB	4.24 (SIZE 21)	1.70 <i>0.067</i>	22	4.775 <i>0.188</i>	7.87 <i>0.310</i>	29.77 <i>1.172</i>	Acetal - Black	Brass Insert - Set Screw	12.45 <i>0.490</i>	

Indicates item not stocked at time of printing - Please enquire for lead time

E&OE Pricing and all details subject to change without notice - Copyright Miniature Bearings Australia Pty Ltd

MBA Size Listings are a guide to sizes only and must not be solely relied on for critical design information.

Sprockets - Ladder Chain

Part Number	Pitch (P) mm <i>inches</i>	Tooth Thickness (F.W.) mm <i>inches</i>	Teeth (No.)	Bore (d) mm <i>inches</i>	Overall Width (L) mm <i>inches</i>	Pitch Diameter mm <i>inches</i>	Material	Type	Hub Diameter mm <i>inches</i>	Locking Method
# SPLA042-024-06.35-ACE	4.24 (SIZE 21)	1.70 <i>0.067</i>	24	6.350 <i>0.250</i>	7.87 <i>0.310</i>	32.44 <i>1.277</i>	Acetal - Black	Plain - No Insert	9.40 <i>0.370</i>	
# SPLA042-024-06.35-ACB	4.24 (SIZE 21)	1.70 <i>0.067</i>	24	6.350 <i>0.250</i>	7.87 <i>0.310</i>	32.44 <i>1.277</i>	Acetal - Black	Brass Insert - Set Screw	12.45 <i>0.490</i>	
# SPLA042-024-09.53-ACE	4.24 (SIZE 21)	1.70 <i>0.067</i>	24	9.525 <i>0.375</i>	7.87 <i>0.310</i>	32.44 <i>1.277</i>	Acetal - Black	Plain - No Insert	12.45 <i>0.490</i>	
# SPLA042-024-04.78-ACE	4.24 (SIZE 21)	1.70 <i>0.067</i>	24	4.775 <i>0.188</i>	7.87 <i>0.310</i>	32.44 <i>1.277</i>	Acetal - Black	Plain - No Insert	7.87 <i>0.310</i>	
# SPLA042-024-04.78-ACB	4.24 (SIZE 21)	1.70 <i>0.067</i>	24	4.775 <i>0.188</i>	7.87 <i>0.310</i>	32.44 <i>1.277</i>	Acetal - Black	Brass Insert - Set Screw	12.45 <i>0.490</i>	
# SPLA042-025-04.78-ACB	4.24 (SIZE 21)	1.70 <i>0.067</i>	25	4.775 <i>0.188</i>	7.87 <i>0.310</i>	33.78 <i>1.330</i>	Acetal - Black	Brass Insert - Set Screw	12.45 <i>0.490</i>	
# SPLA042-025-04.78-ACE	4.24 (SIZE 21)	1.70 <i>0.067</i>	25	4.775 <i>0.188</i>	7.87 <i>0.310</i>	33.78 <i>1.330</i>	Acetal - Black	Plain - No Insert	7.87 <i>0.310</i>	
# SPLA042-025-06.35-ACB	4.24 (SIZE 21)	1.70 <i>0.067</i>	25	6.350 <i>0.250</i>	7.87 <i>0.310</i>	33.78 <i>1.330</i>	Acetal - Black	Brass Insert - Set Screw	12.45 <i>0.490</i>	

Indicates item not stocked at time of printing - Please enquire for lead time

E&OE Pricing and all details subject to change without notice - Copyright Miniature Bearings Australia Pty Ltd

MBA Size Listings are a guide to sizes only and must not be solely relied on for critical design information.

Sprockets - Ladder Chain

Part Number	Pitch (P) mm <i>inches</i>	Tooth Thickness (F.W.) mm <i>inches</i>	Teeth (No.)	Bore (d) mm <i>inches</i>	Overall Width (L) mm <i>inches</i>	Pitch Diameter mm <i>inches</i>	Material	Type	Hub Diameter mm <i>inches</i>	Locking Method
# SPLA042-025-09.53-ACE	4.24 (SIZE 21)	1.70 <i>0.067</i>	25	9.525 <i>0.375</i>	7.87 <i>0.310</i>	33.78 <i>1.330</i>	Acetal - Black	Plain - No Insert	12.45 <i>0.490</i>	
# SPLA042-025-06.35-ACE	4.24 (SIZE 21)	1.70 <i>0.067</i>	25	6.350 <i>0.250</i>	7.87 <i>0.310</i>	33.78 <i>1.330</i>	Acetal - Black	Plain - No Insert	9.40 <i>0.370</i>	
# SPLA042-030-09.53-ACE	4.24 (SIZE 21)	1.70 <i>0.067</i>	30	9.525 <i>0.375</i>	7.87 <i>0.310</i>	40.51 <i>1.595</i>	Acetal - Black	Plain - No Insert	12.45 <i>0.490</i>	
# SPLA042-030-04.78-ACB	4.24 (SIZE 21)	1.70 <i>0.067</i>	30	4.775 <i>0.188</i>	7.87 <i>0.310</i>	40.51 <i>1.595</i>	Acetal - Black	Brass Insert - Set Screw	12.45 <i>0.490</i>	
# SPLA042-030-04.78-ACE	4.24 (SIZE 21)	1.70 <i>0.067</i>	30	4.775 <i>0.188</i>	7.87 <i>0.310</i>	40.51 <i>1.595</i>	Acetal - Black	Plain - No Insert	7.87 <i>0.310</i>	
# SPLA042-030-06.35-ACB	4.24 (SIZE 21)	1.70 <i>0.067</i>	30	6.350 <i>0.250</i>	7.87 <i>0.310</i>	40.51 <i>1.595</i>	Acetal - Black	Brass Insert - Set Screw	12.45 <i>0.490</i>	
# SPLA042-030-06.35-ACE	4.24 (SIZE 21)	1.70 <i>0.067</i>	30	6.350 <i>0.250</i>	7.87 <i>0.310</i>	40.51 <i>1.595</i>	Acetal - Black	Plain - No Insert	9.40 <i>0.370</i>	
# SPLA042-032-06.35-ACE	4.24 (SIZE 21)	1.70 <i>0.067</i>	32	6.350 <i>0.250</i>	7.87 <i>0.310</i>	43.21 <i>1.701</i>	Acetal - Black	Plain - No Insert	7.87 <i>0.310</i>	

Indicates item not stocked at time of printing - Please enquire for lead time

E&OE Pricing and all details subject to change without notice - Copyright Miniature Bearings Australia Pty Ltd

MBA Size Listings are a guide to sizes only and must not be solely relied on for critical design information.

Sprockets - Ladder Chain

Part Number	Pitch (P) mm <i>inches</i>	Tooth Thickness (F.W.) mm <i>inches</i>	Teeth (No.)	Bore (d) mm <i>inches</i>	Overall Width (L) mm <i>inches</i>	Pitch Diameter mm <i>inches</i>	Material	Type	Hub Diameter mm <i>inches</i>	Locking Method
# SPLA042-032-04.78-ACB	4.24 (SIZE 21)	1.70 <i>0.067</i>	32	4.775 <i>0.188</i>	7.87 <i>0.310</i>	43.21 <i>1.701</i>	Acetal - Black	Brass Insert - Set Screw	12.45 <i>0.490</i>	
# SPLA042-032-06.35-ACB	4.24 (SIZE 21)	1.70 <i>0.067</i>	32	6.350 <i>0.250</i>	7.87 <i>0.310</i>	43.21 <i>1.701</i>	Acetal - Black	Brass Insert - Set Screw	12.45 <i>0.490</i>	
# SPLA042-032-09.53-ACE	4.24 (SIZE 21)	1.70 <i>0.067</i>	32	9.525 <i>0.375</i>	7.87 <i>0.310</i>	43.21 <i>1.701</i>	Acetal - Black	Plain - No Insert	12.45 <i>0.490</i>	
# SPLA042-036-04.78-ACB	4.24 (SIZE 21)	1.70 <i>0.067</i>	36	4.775 <i>0.188</i>	7.87 <i>0.310</i>	48.59 <i>1.913</i>	Acetal - Black	Brass Insert - Set Screw	12.45 <i>0.490</i>	
# SPLA042-036-06.35-ACB	4.24 (SIZE 21)	1.70 <i>0.067</i>	36	6.350 <i>0.250</i>	7.87 <i>0.310</i>	48.59 <i>1.913</i>	Acetal - Black	Brass Insert - Set Screw	12.45 <i>0.490</i>	
# SPLA042-036-06.35-ACE	4.24 (SIZE 21)	1.70 <i>0.067</i>	36	6.350 <i>0.250</i>	7.87 <i>0.310</i>	48.59 <i>1.913</i>	Acetal - Black	Plain - No Insert	9.40 <i>0.370</i>	
# SPLA042-036-09.53-ACE	4.24 (SIZE 21)	1.70 <i>0.067</i>	36	9.525 <i>0.375</i>	7.87 <i>0.310</i>	48.59 <i>1.913</i>	Acetal - Black	Plain - No Insert	12.45 <i>0.490</i>	
# SPLA042-040-06.35-ACE	4.24 (SIZE 21)	1.70 <i>0.067</i>	40	6.350 <i>0.250</i>	7.87 <i>0.310</i>	53.98 <i>2.125</i>	Acetal - Black	Plain - No Insert	9.40 <i>0.370</i>	

Indicates item not stocked at time of printing - Please enquire for lead time

E&OE Pricing and all details subject to change without notice - Copyright Miniature Bearings Australia Pty Ltd

MBA Size Listings are a guide to sizes only and must not be solely relied on for critical design information.

Sprockets - Ladder Chain

Part Number	Pitch (P) mm <i>inches</i>	Tooth Thickness (F.W.) mm <i>inches</i>	Teeth (No.)	Bore (d) mm <i>inches</i>	Overall Width (L) mm <i>inches</i>	Pitch Diameter mm <i>inches</i>	Material	Type	Hub Diameter mm <i>inches</i>	Locking Method
# SPLA042-040-09.53-ACE	4.24 (SIZE 21)	1.70 <i>0.067</i>	40	9.525 <i>0.375</i>	7.87 <i>0.310</i>	53.98 <i>2.125</i>	Acetal - Black	Plain - No Insert	12.45 <i>0.490</i>	
# SPLA042-040-04.78-ACB	4.24 (SIZE 21)	1.70 <i>0.067</i>	40	4.775 <i>0.188</i>	7.87 <i>0.310</i>	53.98 <i>2.125</i>	Acetal - Black	Brass Insert - Set Screw	12.45 <i>0.490</i>	
# SPLA042-040-06.35-ACB	4.24 (SIZE 21)	1.70 <i>0.067</i>	40	6.350 <i>0.250</i>	7.87 <i>0.310</i>	53.98 <i>2.125</i>	Acetal - Black	Brass Insert - Set Screw	12.45 <i>0.490</i>	
# SPLA042-048-04.78-ACB	4.24 (SIZE 21)	1.70 <i>0.067</i>	48	4.775 <i>0.188</i>	7.87 <i>0.310</i>	64.75 <i>2.549</i>	Acetal - Black	Brass Insert - Set Screw	12.45 <i>0.490</i>	
# SPLA042-048-06.35-ACB	4.24 (SIZE 21)	1.70 <i>0.067</i>	48	6.350 <i>0.250</i>	7.87 <i>0.310</i>	64.75 <i>2.549</i>	Acetal - Black	Brass Insert - Set Screw	12.45 <i>0.490</i>	
# SPLA042-048-09.53-ACE	4.24 (SIZE 21)	1.70 <i>0.067</i>	48	9.525 <i>0.375</i>	7.87 <i>0.310</i>	64.75 <i>2.549</i>	Acetal - Black	Plain - No Insert	12.45 <i>0.490</i>	
# SPLA042-048-06.35-ACE	4.24 (SIZE 21)	1.70 <i>0.067</i>	48	6.350 <i>0.250</i>	7.87 <i>0.310</i>	64.75 <i>2.549</i>	Acetal - Black	Plain - No Insert	9.40 <i>0.370</i>	
# SPLA042-006-03.00-ACE	4.24 (SIZE 21)	1.70 <i>0.067</i>	6	3.000 <i>0.118</i>	8.00 <i>0.315</i>	8.50 <i>0.335</i>	Acetal - Black	Plain - No Insert	6.20 <i>0.244</i>	

Indicates item not stocked at time of printing - Please enquire for lead time

E&OE Pricing and all details subject to change without notice - Copyright Miniature Bearings Australia Pty Ltd

MBA Size Listings are a guide to sizes only and must not be solely relied on for critical design information.

Sprockets - Ladder Chain

Part Number	Pitch (P) mm	Tooth Thickness (F.W.) mm	Teeth (No.)	Bore (d) mm	Overall Width (L) mm	Pitch Diameter mm	Material	Type	Hub Diameter mm	Locking Method
	<i>inches</i>	<i>inches</i>		<i>inches</i>	<i>inches</i>	<i>inches</i>			<i>inches</i>	
# SPLA042-008-03.00-ACE	4.24 (SIZE 21)	1.70	8	3.000	8.00	11.10	Acetal - Black	Plain - No Insert	6.20	
		<i>0.067</i>		<i>0.118</i>	<i>0.315</i>	<i>0.437</i>			<i>0.244</i>	
# SPLA042-009-03.00-ACE	4.24 (SIZE 21)	1.70	9	3.000	8.00	12.40	Acetal - Black	Plain - No Insert	6.20	
		<i>0.067</i>		<i>0.118</i>	<i>0.315</i>	<i>0.488</i>			<i>0.244</i>	
# SPLA042-010-04.00-ACE	4.24 (SIZE 21)	1.70	10	4.000	8.00	13.70	Acetal - Black	Plain - No Insert	7.90	
		<i>0.067</i>		<i>0.157</i>	<i>0.315</i>	<i>0.539</i>			<i>0.311</i>	
# SPLA042-010-06.00-ACE	4.24 (SIZE 21)	1.70	10	6.000	8.00	13.70	Acetal - Black	Plain - No Insert	9.40	
		<i>0.067</i>		<i>0.236</i>	<i>0.315</i>	<i>0.539</i>			<i>0.370</i>	
# SPLA042-010-04.00-ACB	4.24 (SIZE 21)	1.70	10	4.000	8.00	13.70	Acetal - Black	Brass Insert - Set Screw	9.40	
		<i>0.067</i>		<i>0.157</i>	<i>0.315</i>	<i>0.539</i>			<i>0.370</i>	
# SPLA042-010-03.00-ACE	4.24 (SIZE 21)	1.70	10	3.000	8.00	12.40	Acetal - Black	Plain - No Insert	6.20	
		<i>0.067</i>		<i>0.118</i>	<i>0.315</i>	<i>0.488</i>			<i>0.244</i>	
# SPLA042-010-03.00-ACB	4.24 (SIZE 21)	1.70	10	3.000	8.00	13.70	Acetal - Black	Brass Insert - Set Screw	9.40	
		<i>0.067</i>		<i>0.118</i>	<i>0.315</i>	<i>0.539</i>			<i>0.370</i>	
# SPLA042-012-03.00-ACB	4.24 (SIZE 21)	1.70	12	3.000	8.00	16.40	Acetal - Black	Brass Insert - Set Screw	9.40	
		<i>0.067</i>		<i>0.118</i>	<i>0.315</i>	<i>0.646</i>			<i>0.370</i>	

Indicates item not stocked at time of printing - Please enquire for lead time

E&OE Pricing and all details subject to change without notice - Copyright Miniature Bearings Australia Pty Ltd

MBA Size Listings are a guide to sizes only and must not be solely relied on for critical design information.

Sprockets - Ladder Chain

Part Number	Pitch (P) mm	Tooth Thickness (F.W.) mm	Teeth (No.)	Bore (d) mm	Overall Width (L) mm	Pitch Diameter mm	Material	Type	Hub Diameter mm	Locking Method
	<i>inches</i>	<i>inches</i>		<i>inches</i>	<i>inches</i>	<i>inches</i>			<i>inches</i>	
# SPLA042-012-06.00-ACE	4.24 (SIZE 21)	1.70	12	6.000	8.00	16.40	Acetal - Black	Plain - No Insert	9.40	
		<i>0.067</i>		<i>0.236</i>	<i>0.315</i>	<i>0.646</i>			<i>0.370</i>	
# SPLA042-012-04.00-ACE	4.24 (SIZE 21)	1.70	12	4.000	8.00	16.40	Acetal - Black	Plain - No Insert	7.90	
		<i>0.067</i>		<i>0.157</i>	<i>0.315</i>	<i>0.646</i>			<i>0.311</i>	
# SPLA042-012-04.00-ACB	4.24 (SIZE 21)	1.70	12	4.000	8.00	16.40	Acetal - Black	Brass Insert - Set Screw	9.40	
		<i>0.067</i>		<i>0.157</i>	<i>0.315</i>	<i>0.646</i>			<i>0.370</i>	
# SPLA042-012-03.00-ACE	4.24 (SIZE 21)	1.70	12	3.000	8.00	13.70	Acetal - Black	Plain - No Insert	6.20	
		<i>0.067</i>		<i>0.118</i>	<i>0.315</i>	<i>0.539</i>			<i>0.244</i>	
# SPLA042-013-04.00-ACE	4.24 (SIZE 21)	1.70	13	4.000	8.00	17.70	Acetal - Black	Plain - No Insert	7.90	
		<i>0.067</i>		<i>0.157</i>	<i>0.315</i>	<i>0.697</i>			<i>0.311</i>	
# SPLA042-013-04.00-ACB	4.24 (SIZE 21)	1.70	13	4.000	8.00	17.70	Acetal - Black	Brass Insert - Set Screw	9.40	
		<i>0.067</i>		<i>0.157</i>	<i>0.315</i>	<i>0.697</i>			<i>0.370</i>	
# SPLA042-013-03.00-ACE	4.24 (SIZE 21)	1.70	13	3.000	8.00	16.40	Acetal - Black	Plain - No Insert	6.20	
		<i>0.067</i>		<i>0.118</i>	<i>0.315</i>	<i>0.646</i>			<i>0.244</i>	
# SPLA042-013-06.00-ACE	4.24 (SIZE 21)	1.70	13	6.000	8.00	17.70	Acetal - Black	Plain - No Insert	9.40	
		<i>0.067</i>		<i>0.236</i>	<i>0.315</i>	<i>0.697</i>			<i>0.370</i>	

Indicates item not stocked at time of printing - Please enquire for lead time

E&OE Pricing and all details subject to change without notice - Copyright Miniature Bearings Australia Pty Ltd

MBA Size Listings are a guide to sizes only and must not be solely relied on for critical design information.

Sprockets - Ladder Chain

Part Number	Pitch (P) mm	Tooth Thickness (F.W.) mm	Teeth (No.)	Bore (d) mm	Overall Width (L) mm	Pitch Diameter mm	Material	Type	Hub Diameter mm	Locking Method
	<i>inches</i>	<i>inches</i>		<i>inches</i>	<i>inches</i>	<i>inches</i>			<i>inches</i>	
# SPLA042-013-03.00-ACB	4.24 (SIZE 21)	1.70	13	3.000	8.00	17.70	Acetal - Black	Brass Insert - Set Screw	9.40	
		<i>0.067</i>		<i>0.118</i>	<i>0.315</i>	<i>0.697</i>			<i>0.370</i>	
# SPLA042-014-03.00-ACB	4.24 (SIZE 21)	1.70	14	3.000	8.00	19.00	Acetal - Black	Brass Insert - Set Screw	9.40	
		<i>0.067</i>		<i>0.118</i>	<i>0.315</i>	<i>0.748</i>			<i>0.370</i>	
# SPLA042-014-03.00-ACE	4.24 (SIZE 21)	1.70	14	3.000	8.00	17.70	Acetal - Black	Plain - No Insert	6.20	
		<i>0.067</i>		<i>0.118</i>	<i>0.315</i>	<i>0.697</i>			<i>0.244</i>	
# SPLA042-014-04.00-ACB	4.24 (SIZE 21)	1.70	14	4.000	8.00	19.00	Acetal - Black	Brass Insert - Set Screw	9.40	
		<i>0.067</i>		<i>0.157</i>	<i>0.315</i>	<i>0.748</i>			<i>0.370</i>	
# SPLA042-014-04.00-ACE	4.24 (SIZE 21)	1.70	14	4.000	8.00	19.00	Acetal - Black	Plain - No Insert	7.90	
		<i>0.067</i>		<i>0.157</i>	<i>0.315</i>	<i>0.748</i>			<i>0.311</i>	
# SPLA042-014-06.00-ACE	4.24 (SIZE 21)	1.70	14	6.000	8.00	19.00	Acetal - Black	Plain - No Insert	9.40	
		<i>0.067</i>		<i>0.236</i>	<i>0.315</i>	<i>0.748</i>			<i>0.370</i>	
# SPLA042-015-04.00-ACB	4.24 (SIZE 21)	1.70	15	4.000	8.00	20.40	Acetal - Black	Brass Insert - Set Screw	9.40	
		<i>0.067</i>		<i>0.157</i>	<i>0.315</i>	<i>0.803</i>			<i>0.370</i>	
# SPLA042-015-06.00-ACE	4.24 (SIZE 21)	1.70	15	6.000	8.00	20.40	Acetal - Black	Plain - No Insert	9.40	
		<i>0.067</i>		<i>0.236</i>	<i>0.315</i>	<i>0.803</i>			<i>0.370</i>	

Indicates item not stocked at time of printing - Please enquire for lead time

E&OE Pricing and all details subject to change without notice - Copyright Miniature Bearings Australia Pty Ltd

MBA Size Listings are a guide to sizes only and must not be solely relied on for critical design information.

Sprockets - Ladder Chain

Part Number	Pitch (P) mm	Tooth Thickness (F.W.) mm	Teeth (No.)	Bore (d) mm	Overall Width (L) mm	Pitch Diameter mm	Material	Type	Hub Diameter mm	Locking Method
	<i>inches</i>	<i>inches</i>		<i>inches</i>	<i>inches</i>	<i>inches</i>			<i>inches</i>	
# SPLA042-015-03.00-ACB	4.24 (SIZE 21)	1.70	15	3.000	8.00	20.40	Acetal - Black	Brass Insert - Set Screw	9.40	
		<i>0.067</i>		<i>0.118</i>	<i>0.315</i>	<i>0.803</i>			<i>0.370</i>	
# SPLA042-015-03.00-ACE	4.24 (SIZE 21)	1.70	15	3.000	8.00	19.00	Acetal - Black	Plain - No Insert	6.20	
		<i>0.067</i>		<i>0.118</i>	<i>0.315</i>	<i>0.748</i>			<i>0.244</i>	
# SPLA042-015-04.00-ACE	4.24 (SIZE 21)	1.70	15	4.000	8.00	20.40	Acetal - Black	Plain - No Insert	7.90	
		<i>0.067</i>		<i>0.157</i>	<i>0.315</i>	<i>0.803</i>			<i>0.311</i>	
# SPLA042-016-09.00-ACE	4.24 (SIZE 21)	1.70	16	9.000	8.00	21.70	Acetal - Black	Plain - No Insert	12.40	
		<i>0.067</i>		<i>0.354</i>	<i>0.315</i>	<i>0.854</i>			<i>0.488</i>	
# SPLA042-016-04.00-ACB	4.24 (SIZE 21)	1.70	16	4.000	8.00	21.70	Acetal - Black	Brass Insert - Set Screw	12.40	
		<i>0.067</i>		<i>0.157</i>	<i>0.315</i>	<i>0.854</i>			<i>0.488</i>	
# SPLA042-016-03.00-ACE	4.24 (SIZE 21)	1.70	16	3.000	8.00	21.70	Acetal - Black	Plain - No Insert	6.20	
		<i>0.067</i>		<i>0.118</i>	<i>0.315</i>	<i>0.854</i>			<i>0.244</i>	
# SPLA042-016-04.00-ACE	4.24 (SIZE 21)	1.70	16	4.000	8.00	21.70	Acetal - Black	Plain - No Insert	7.90	
		<i>0.067</i>		<i>0.157</i>	<i>0.315</i>	<i>0.854</i>			<i>0.311</i>	
# SPLA042-016-05.00-ACB	4.24 (SIZE 21)	1.70	16	5.000	8.00	21.70	Acetal - Black	Brass Insert - Set Screw	12.40	
		<i>0.067</i>		<i>0.197</i>	<i>0.315</i>	<i>0.854</i>			<i>0.488</i>	

Indicates item not stocked at time of printing - Please enquire for lead time

E&OE Pricing and all details subject to change without notice - Copyright Miniature Bearings Australia Pty Ltd

MBA Size Listings are a guide to sizes only and must not be solely relied on for critical design information.

Sprockets - Ladder Chain

Part Number	Pitch (P) mm <i>inches</i>	Tooth Thickness (F.W.) mm <i>inches</i>	Teeth (No.)	Bore (d) mm <i>inches</i>	Overall Width (L) mm <i>inches</i>	Pitch Diameter mm <i>inches</i>	Material	Type	Hub Diameter mm <i>inches</i>	Locking Method
SPLA042-016-06.00-ACB	4.24 (SIZE 21)	1.70 <i>0.067</i>	16	6.000 <i>0.236</i>	8.00 <i>0.315</i>	21.70 <i>0.854</i>	Acetal - Black	Brass Insert - Set Screw	12.40 <i>0.488</i>	
# SPLA042-016-06.00-ACE	4.24 (SIZE 21)	1.70 <i>0.067</i>	16	6.000 <i>0.236</i>	8.00 <i>0.315</i>	21.70 <i>0.854</i>	Acetal - Black	Plain - No Insert	9.40 <i>0.370</i>	
# SPLA042-018-05.00-ACB	4.24 (SIZE 21)	1.70 <i>0.067</i>	18	5.000 <i>0.197</i>	8.00 <i>0.315</i>	24.40 <i>0.961</i>	Acetal - Black	Brass Insert - Set Screw	12.40 <i>0.488</i>	
# SPLA042-018-04.00-ACE	4.24 (SIZE 21)	1.70 <i>0.067</i>	18	4.000 <i>0.157</i>	8.00 <i>0.315</i>	24.40 <i>0.961</i>	Acetal - Black	Plain - No Insert	7.90 <i>0.311</i>	
# SPLA042-018-03.00-ACB	4.24 (SIZE 21)	1.70 <i>0.067</i>	18	3.000 <i>0.118</i>	8.00 <i>0.315</i>	21.70 <i>0.854</i>	Acetal - Black	Brass Insert - Set Screw	12.40 <i>0.488</i>	
# SPLA042-018-03.00-ACE	4.24 (SIZE 21)	1.70 <i>0.067</i>	18	3.000 <i>0.118</i>	8.00 <i>0.315</i>	24.40 <i>0.961</i>	Acetal - Black	Plain - No Insert	6.20 <i>0.244</i>	
# SPLA042-018-09.00-ACE	4.24 (SIZE 21)	1.70 <i>0.067</i>	18	9.000 <i>0.354</i>	8.00 <i>0.315</i>	24.40 <i>0.961</i>	Acetal - Black	Plain - No Insert	12.40 <i>0.488</i>	
# SPLA042-018-06.00-ACE	4.24 (SIZE 21)	1.70 <i>0.067</i>	18	6.000 <i>0.236</i>	8.00 <i>0.315</i>	24.40 <i>0.961</i>	Acetal - Black	Plain - No Insert	9.40 <i>0.370</i>	

Indicates item not stocked at time of printing - Please enquire for lead time

E&OE Pricing and all details subject to change without notice - Copyright Miniature Bearings Australia Pty Ltd

MBA Size Listings are a guide to sizes only and must not be solely relied on for critical design information.

Sprockets - Ladder Chain

Part Number	Pitch (P) mm	Tooth Thickness (F.W.) mm	Teeth (No.)	Bore (d) mm	Overall Width (L) mm	Pitch Diameter mm	Material	Type	Hub Diameter mm	Locking Method
	<i>inches</i>	<i>inches</i>		<i>inches</i>	<i>inches</i>	<i>inches</i>			<i>inches</i>	
# SPLA042-018-06.00-ACB	4.24 (SIZE 21)	1.70 <i>0.067</i>	18	6.000 <i>0.236</i>	8.00 <i>0.315</i>	24.40 <i>0.961</i>	Acetal - Black	Brass Insert - Set Screw	12.40 <i>0.488</i>	
# SPLA042-018-04.00-ACB	4.24 (SIZE 21)	1.70 <i>0.067</i>	18	4.000 <i>0.157</i>	8.00 <i>0.315</i>	24.40 <i>0.961</i>	Acetal - Black	Brass Insert - Set Screw	12.40 <i>0.488</i>	
# SPLA042-020-05.00-ACB	4.24 (SIZE 21)	1.70 <i>0.067</i>	20	5.000 <i>0.197</i>	8.00 <i>0.315</i>	27.10 <i>1.067</i>	Acetal - Black	Brass Insert - Set Screw	12.40 <i>0.488</i>	
# SPLA042-020-03.00-ACB	4.24 (SIZE 21)	1.70 <i>0.067</i>	20	3.000 <i>0.118</i>	8.00 <i>0.315</i>	24.40 <i>0.961</i>	Acetal - Black	Brass Insert - Set Screw	12.40 <i>0.488</i>	
# SPLA042-020-04.00-ACE	4.24 (SIZE 21)	1.70 <i>0.067</i>	20	4.000 <i>0.157</i>	8.00 <i>0.315</i>	27.10 <i>1.067</i>	Acetal - Black	Plain - No Insert	7.90 <i>0.311</i>	
# SPLA042-020-03.00-ACE	4.24 (SIZE 21)	1.70 <i>0.067</i>	20	3.000 <i>0.118</i>	8.00 <i>0.315</i>	27.10 <i>1.067</i>	Acetal - Black	Plain - No Insert	6.20 <i>0.244</i>	
# SPLA042-020-04.00-ACB	4.24 (SIZE 21)	1.70 <i>0.067</i>	20	4.000 <i>0.157</i>	8.00 <i>0.315</i>	27.10 <i>1.067</i>	Acetal - Black	Brass Insert - Set Screw	12.40 <i>0.488</i>	
# SPLA042-020-06.00-ACE	4.24 (SIZE 21)	1.70 <i>0.067</i>	20	6.000 <i>0.236</i>	8.00 <i>0.315</i>	27.10 <i>1.067</i>	Acetal - Black	Plain - No Insert	9.40 <i>0.370</i>	

Indicates item not stocked at time of printing - Please enquire for lead time

E&OE Pricing and all details subject to change without notice - Copyright Miniature Bearings Australia Pty Ltd

MBA Size Listings are a guide to sizes only and must not be solely relied on for critical design information.

Sprockets - Ladder Chain

Part Number	Pitch (P) mm <i>inches</i>	Tooth Thickness (F.W.) mm <i>inches</i>	Teeth (No.)	Bore (d) mm <i>inches</i>	Overall Width (L) mm <i>inches</i>	Pitch Diameter mm <i>inches</i>	Material	Type	Hub Diameter mm <i>inches</i>	Locking Method
# SPLA042-020-09.00-ACE	4.24 (SIZE 21)	1.70 <i>0.067</i>	20	9.000 <i>0.354</i>	8.00 <i>0.315</i>	27.10 <i>1.067</i>	Acetal - Black	Plain - No Insert	12.40 <i>0.488</i>	
# SPLA042-020-06.00-ACB	4.24 (SIZE 21)	1.70 <i>0.067</i>	20	6.000 <i>0.236</i>	8.00 <i>0.315</i>	27.10 <i>1.067</i>	Acetal - Black	Brass Insert - Set Screw	12.40 <i>0.488</i>	
# SPLA042-021-06.00-ACB	4.24 (SIZE 21)	1.70 <i>0.067</i>	21	6.000 <i>0.236</i>	8.00 <i>0.315</i>	28.40 <i>1.118</i>	Acetal - Black	Brass Insert - Set Screw	12.40 <i>0.488</i>	
# SPLA042-021-06.00-ACE	4.24 (SIZE 21)	1.70 <i>0.067</i>	21	6.000 <i>0.236</i>	8.00 <i>0.315</i>	28.40 <i>1.118</i>	Acetal - Black	Plain - No Insert	9.40 <i>0.370</i>	
# SPLA042-021-09.00-ACE	4.24 (SIZE 21)	1.70 <i>0.067</i>	21	9.000 <i>0.354</i>	8.00 <i>0.315</i>	28.40 <i>1.118</i>	Acetal - Black	Plain - No Insert	12.40 <i>0.488</i>	
# SPLA042-021-04.00-ACE	4.24 (SIZE 21)	1.70 <i>0.067</i>	21	4.000 <i>0.157</i>	8.00 <i>0.315</i>	28.40 <i>1.118</i>	Acetal - Black	Plain - No Insert	7.90 <i>0.311</i>	
# SPLA042-021-05.00-ACB	4.24 (SIZE 21)	1.70 <i>0.067</i>	21	5.000 <i>0.197</i>	8.00 <i>0.315</i>	28.40 <i>1.118</i>	Acetal - Black	Brass Insert - Set Screw	12.40 <i>0.488</i>	
# SPLA042-021-04.00-ACB	4.24 (SIZE 21)	1.70 <i>0.067</i>	21	4.000 <i>0.157</i>	8.00 <i>0.315</i>	28.40 <i>1.118</i>	Acetal - Black	Brass Insert - Set Screw	12.40 <i>0.488</i>	

Indicates item not stocked at time of printing - Please enquire for lead time

E&OE Pricing and all details subject to change without notice - Copyright Miniature Bearings Australia Pty Ltd

MBA Size Listings are a guide to sizes only and must not be solely relied on for critical design information.

Sprockets - Ladder Chain

Part Number	Pitch (P) mm <i>inches</i>	Tooth Thickness (F.W.) mm <i>inches</i>	Teeth (No.)	Bore (d) mm <i>inches</i>	Overall Width (L) mm <i>inches</i>	Pitch Diameter mm <i>inches</i>	Material	Type	Hub Diameter mm <i>inches</i>	Locking Method
# SPLA042-021-03.00-ACB	4.24 (SIZE 21)	1.70 <i>0.067</i>	21	3.000 <i>0.118</i>	8.00 <i>0.315</i>	27.10 <i>1.067</i>	Acetal - Black	Brass Insert - Set Screw	12.40 <i>0.488</i>	
# SPLA042-022-04.00-ACB	4.24 (SIZE 21)	1.70 <i>0.067</i>	22	4.000 <i>0.157</i>	8.00 <i>0.315</i>	29.80 <i>1.173</i>	Acetal - Black	Brass Insert - Set Screw	12.40 <i>0.488</i>	
# SPLA042-022-09.00-ACE	4.24 (SIZE 21)	1.70 <i>0.067</i>	22	9.000 <i>0.354</i>	8.00 <i>0.315</i>	29.80 <i>1.173</i>	Acetal - Black	Plain - No Insert	12.40 <i>0.488</i>	
# SPLA042-022-06.00-ACB	4.24 (SIZE 21)	1.70 <i>0.067</i>	22	6.000 <i>0.236</i>	8.00 <i>0.315</i>	29.80 <i>1.173</i>	Acetal - Black	Brass Insert - Set Screw	12.40 <i>0.488</i>	
# SPLA042-022-05.00-ACB	4.24 (SIZE 21)	1.70 <i>0.067</i>	22	5.000 <i>0.197</i>	8.00 <i>0.315</i>	29.80 <i>1.173</i>	Acetal - Black	Brass Insert - Set Screw	12.40 <i>0.488</i>	
# SPLA042-022-06.00-ACE	4.24 (SIZE 21)	1.70 <i>0.067</i>	22	6.000 <i>0.236</i>	8.00 <i>0.315</i>	29.80 <i>1.173</i>	Acetal - Black	Plain - No Insert	9.40 <i>0.370</i>	
# SPLA042-022-04.00-ACE	4.24 (SIZE 21)	1.70 <i>0.067</i>	22	4.000 <i>0.157</i>	8.00 <i>0.315</i>	29.80 <i>1.173</i>	Acetal - Black	Plain - No Insert	7.90 <i>0.311</i>	
# SPLA042-024-06.00-ACE	4.24 (SIZE 21)	1.70 <i>0.067</i>	24	6.000 <i>0.236</i>	8.00 <i>0.315</i>	32.40 <i>1.276</i>	Acetal - Black	Plain - No Insert	9.40 <i>0.370</i>	

Indicates item not stocked at time of printing - Please enquire for lead time

E&OE Pricing and all details subject to change without notice - Copyright Miniature Bearings Australia Pty Ltd

MBA Size Listings are a guide to sizes only and must not be solely relied on for critical design information.

Sprockets - Ladder Chain

Part Number	Pitch (P) mm <i>inches</i>	Tooth Thickness (F.W.) mm <i>inches</i>	Teeth (No.)	Bore (d) mm <i>inches</i>	Overall Width (L) mm <i>inches</i>	Pitch Diameter mm <i>inches</i>	Material	Type	Hub Diameter mm <i>inches</i>	Locking Method
# SPLA042-024-06.00-ACB	4.24 (SIZE 21)	1.70 <i>0.067</i>	24	6.000 <i>0.236</i>	8.00 <i>0.315</i>	32.40 <i>1.276</i>	Acetal - Black	Brass Insert - Set Screw	12.40 <i>0.488</i>	
# SPLA042-024-05.00-ACB	4.24 (SIZE 21)	1.70 <i>0.067</i>	24	5.000 <i>0.197</i>	8.00 <i>0.315</i>	32.40 <i>1.276</i>	Acetal - Black	Brass Insert - Set Screw	12.40 <i>0.488</i>	
# SPLA042-024-04.00-ACE	4.24 (SIZE 21)	1.70 <i>0.067</i>	24	4.000 <i>0.157</i>	8.00 <i>0.315</i>	32.40 <i>1.276</i>	Acetal - Black	Plain - No Insert	7.90 <i>0.311</i>	
# SPLA042-024-04.00-ACB	4.24 (SIZE 21)	1.70 <i>0.067</i>	24	4.000 <i>0.157</i>	8.00 <i>0.315</i>	32.40 <i>1.276</i>	Acetal - Black	Brass Insert - Set Screw	12.40 <i>0.488</i>	
# SPLA042-024-09.00-ACE	4.24 (SIZE 21)	1.70 <i>0.067</i>	24	9.000 <i>0.354</i>	8.00 <i>0.315</i>	32.40 <i>1.276</i>	Acetal - Black	Plain - No Insert	12.40 <i>0.488</i>	
# SPLA042-025-09.00-ACE	4.24 (SIZE 21)	1.70 <i>0.067</i>	25	9.000 <i>0.354</i>	8.00 <i>0.315</i>	33.80 <i>1.331</i>	Acetal - Black	Plain - No Insert	12.40 <i>0.488</i>	
# SPLA042-025-06.00-ACB	4.24 (SIZE 21)	1.70 <i>0.067</i>	25	6.000 <i>0.236</i>	8.00 <i>0.315</i>	33.80 <i>1.331</i>	Acetal - Black	Brass Insert - Set Screw	12.40 <i>0.488</i>	
# SPLA042-025-05.00-ACB	4.24 (SIZE 21)	1.70 <i>0.067</i>	25	5.000 <i>0.197</i>	8.00 <i>0.315</i>	33.80 <i>1.331</i>	Acetal - Black	Brass Insert - Set Screw	12.40 <i>0.488</i>	

Indicates item not stocked at time of printing - Please enquire for lead time

E&OE Pricing and all details subject to change without notice - Copyright Miniature Bearings Australia Pty Ltd

MBA Size Listings are a guide to sizes only and must not be solely relied on for critical design information.

Sprockets - Ladder Chain

Part Number	Pitch (P) mm	Tooth Thickness (F.W.) mm	Teeth (No.)	Bore (d) mm	Overall Width (L) mm	Pitch Diameter mm	Material	Type	Hub Diameter mm	Locking Method
	<i>inches</i>	<i>inches</i>		<i>inches</i>	<i>inches</i>	<i>inches</i>			<i>inches</i>	
# SPLA042-025-04.00-ACE	4.24 (SIZE 21)	1.70	25	4.000	8.00	33.80	Acetal - Black	Plain - No Insert	7.90	
		<i>0.067</i>		<i>0.157</i>	<i>0.315</i>	<i>1.331</i>			<i>0.311</i>	
# SPLA042-025-04.00-ACB	4.24 (SIZE 21)	1.70	25	4.000	8.00	33.80	Acetal - Black	Brass Insert - Set Screw	12.40	
		<i>0.067</i>		<i>0.157</i>	<i>0.315</i>	<i>1.331</i>			<i>0.488</i>	
# SPLA042-025-06.00-ACE	4.24 (SIZE 21)	1.70	25	6.000	8.00	33.80	Acetal - Black	Plain - No Insert	9.40	
		<i>0.067</i>		<i>0.236</i>	<i>0.315</i>	<i>1.331</i>			<i>0.370</i>	
# SPLA042-030-09.00-ACE	4.24 (SIZE 21)	1.70	30	9.000	8.00	43.20	Acetal - Black	Plain - No Insert	12.40	
		<i>0.067</i>		<i>0.354</i>	<i>0.315</i>	<i>1.701</i>			<i>0.488</i>	
# SPLA042-030-06.00-ACE	4.24 (SIZE 21)	1.70	30	6.000	8.00	40.50	Acetal - Black	Plain - No Insert	9.40	
		<i>0.067</i>		<i>0.236</i>	<i>0.315</i>	<i>1.594</i>			<i>0.370</i>	
# SPLA042-030-06.00-ACB	4.24 (SIZE 21)	1.70	30	6.000	8.00	40.50	Acetal - Black	Brass Insert - Set Screw	12.40	
		<i>0.067</i>		<i>0.236</i>	<i>0.315</i>	<i>1.594</i>			<i>0.488</i>	
# SPLA042-030-05.00-ACB	4.24 (SIZE 21)	1.70	30	5.000	8.00	40.50	Acetal - Black	Brass Insert - Set Screw	12.40	
		<i>0.067</i>		<i>0.197</i>	<i>0.315</i>	<i>1.594</i>			<i>0.488</i>	
# SPLA042-030-04.00-ACE	4.24 (SIZE 21)	1.70	30	4.000	8.00	40.50	Acetal - Black	Plain - No Insert	7.90	
		<i>0.067</i>		<i>0.157</i>	<i>0.315</i>	<i>1.594</i>			<i>0.311</i>	

Indicates item not stocked at time of printing - Please enquire for lead time

E&OE Pricing and all details subject to change without notice - Copyright Miniature Bearings Australia Pty Ltd

MBA Size Listings are a guide to sizes only and must not be solely relied on for critical design information.

Sprockets - Ladder Chain

Part Number	Pitch (P) mm <i>inches</i>	Tooth Thickness (F.W.) mm <i>inches</i>	Teeth (No.)	Bore (d) mm <i>inches</i>	Overall Width (L) mm <i>inches</i>	Pitch Diameter mm <i>inches</i>	Material	Type	Hub Diameter mm <i>inches</i>	Locking Method
# SPLA042-030-04.00-ACB	4.24 (SIZE 21)	1.70 <i>0.067</i>	30	4.000 <i>0.157</i>	8.00 <i>0.315</i>	40.50 <i>1.594</i>	Acetal - Black	Brass Insert - Set Screw	12.40 <i>0.488</i>	
# SPLA042-032-09.00-ACE	4.24 (SIZE 21)	1.70 <i>0.067</i>	32	9.000 <i>0.354</i>	8.00 <i>0.315</i>	48.60 <i>1.913</i>	Acetal - Black	Plain - No Insert	12.40 <i>0.488</i>	
# SPLA042-032-06.00-ACE	4.24 (SIZE 21)	1.70 <i>0.067</i>	32	6.000 <i>0.236</i>	8.00 <i>0.315</i>	43.20 <i>1.701</i>	Acetal - Black	Plain - No Insert	9.40 <i>0.370</i>	
# SPLA042-032-06.00-ACB	4.24 (SIZE 21)	1.70 <i>0.067</i>	32	6.000 <i>0.236</i>	8.00 <i>0.315</i>	43.20 <i>1.701</i>	Acetal - Black	Brass Insert - Set Screw	12.40 <i>0.488</i>	
# SPLA042-032-05.00-ACB	4.24 (SIZE 21)	1.70 <i>0.067</i>	32	5.000 <i>0.197</i>	8.00 <i>0.315</i>	43.20 <i>1.701</i>	Acetal - Black	Brass Insert - Set Screw	12.40 <i>0.488</i>	
# SPLA042-032-04.00-ACB	4.24 (SIZE 21)	1.70 <i>0.067</i>	32	4.000 <i>0.157</i>	8.00 <i>0.315</i>	43.20 <i>1.701</i>	Acetal - Black	Brass Insert - Set Screw	12.40 <i>0.488</i>	
# SPLA042-036-06.00-ACE	4.24 (SIZE 21)	1.70 <i>0.067</i>	36	6.000 <i>0.236</i>	8.00 <i>0.315</i>	48.60 <i>1.913</i>	Acetal - Black	Plain - No Insert	9.40 <i>0.370</i>	
# SPLA042-036-09.00-ACE	4.24 (SIZE 21)	1.70 <i>0.067</i>	36	9.000 <i>0.354</i>	8.00 <i>0.315</i>	54.00 <i>2.126</i>	Acetal - Black	Plain - No Insert	12.40 <i>0.488</i>	

Indicates item not stocked at time of printing - Please enquire for lead time

E&OE Pricing and all details subject to change without notice - Copyright Miniature Bearings Australia Pty Ltd

MBA Size Listings are a guide to sizes only and must not be solely relied on for critical design information.

Sprockets - Ladder Chain

Part Number	Pitch (P) mm	Tooth Thickness (F.W.) mm	Teeth (No.)	Bore (d) mm	Overall Width (L) mm	Pitch Diameter mm	Material	Type	Hub Diameter mm	Locking Method
	<i>inches</i>	<i>inches</i>		<i>inches</i>	<i>inches</i>	<i>inches</i>			<i>inches</i>	
# SPLA042-036-04.00-ACB	4.24 (SIZE 21)	1.70	36	4.000	8.00	48.60	Acetal - Black	Brass Insert - Set Screw	12.40	
		<i>0.067</i>		<i>0.157</i>	<i>0.315</i>	<i>1.913</i>			<i>0.488</i>	
# SPLA042-036-06.00-ACB	4.24 (SIZE 21)	1.70	36	6.000	8.00	48.60	Acetal - Black	Brass Insert - Set Screw	12.40	
		<i>0.067</i>		<i>0.236</i>	<i>0.315</i>	<i>1.913</i>			<i>0.488</i>	
# SPLA042-036-05.00-ACB	4.24 (SIZE 21)	1.70	36	5.000	8.00	48.60	Acetal - Black	Brass Insert - Set Screw	12.40	
		<i>0.067</i>		<i>0.197</i>	<i>0.315</i>	<i>1.913</i>			<i>0.488</i>	
# SPLA042-040-06.00-ACE	4.24 (SIZE 21)	1.70	40	6.000	8.00	54.00	Acetal - Black	Plain - No Insert	9.40	
		<i>0.067</i>		<i>0.236</i>	<i>0.315</i>	<i>2.126</i>			<i>0.370</i>	
# SPLA042-040-05.00-ACB	4.24 (SIZE 21)	1.70	40	5.000	8.00	54.00	Acetal - Black	Brass Insert - Set Screw	12.40	
		<i>0.067</i>		<i>0.197</i>	<i>0.315</i>	<i>2.126</i>			<i>0.488</i>	
# SPLA042-040-04.00-ACB	4.24 (SIZE 21)	1.70	40	4.000	8.00	54.00	Acetal - Black	Brass Insert - Set Screw	12.40	
		<i>0.067</i>		<i>0.157</i>	<i>0.315</i>	<i>2.126</i>			<i>0.488</i>	
# SPLA042-040-09.00-ACE	4.24 (SIZE 21)	1.70	40	9.000	8.00	64.70	Acetal - Black	Plain - No Insert	12.40	
		<i>0.067</i>		<i>0.354</i>	<i>0.315</i>	<i>2.547</i>			<i>0.488</i>	
# SPLA042-040-06.00-ACB	4.24 (SIZE 21)	1.70	40	6.000	8.00	54.00	Acetal - Black	Brass Insert - Set Screw	12.40	
		<i>0.067</i>		<i>0.236</i>	<i>0.315</i>	<i>2.126</i>			<i>0.488</i>	

Indicates item not stocked at time of printing - Please enquire for lead time

E&OE Pricing and all details subject to change without notice - Copyright Miniature Bearings Australia Pty Ltd

MBA Size Listings are a guide to sizes only and must not be solely relied on for critical design information.

Sprockets - Ladder Chain

Part Number	Pitch (P) mm <i>inches</i>	Tooth Thickness (F.W.) mm <i>inches</i>	Teeth (No.)	Bore (d) mm <i>inches</i>	Overall Width (L) mm <i>inches</i>	Pitch Diameter mm <i>inches</i>	Material	Type	Hub Diameter mm <i>inches</i>	Locking Method
# SPLA042-048-09.00-ACE	4.24 (SIZE 21)	1.70 <i>0.067</i>	48	9.000 <i>0.354</i>	8.00 <i>0.315</i>	64.70 <i>2.547</i>	Acetal - Black	Plain - No Insert	12.40 <i>0.488</i>	
# SPLA042-048-06.00-ACE	4.24 (SIZE 21)	1.70 <i>0.067</i>	48	6.000 <i>0.236</i>	8.00 <i>0.315</i>	64.70 <i>2.547</i>	Acetal - Black	Plain - No Insert	9.40 <i>0.370</i>	
# SPLA042-048-06.00-ACB	4.24 (SIZE 21)	1.70 <i>0.067</i>	48	6.000 <i>0.236</i>	8.00 <i>0.315</i>	64.70 <i>2.547</i>	Acetal - Black	Brass Insert - Set Screw	12.40 <i>0.488</i>	
# SPLA042-048-05.00-ACB	4.24 (SIZE 21)	1.70 <i>0.067</i>	48	5.000 <i>0.197</i>	8.00 <i>0.315</i>	64.70 <i>2.547</i>	Acetal - Black	Brass Insert - Set Screw	12.40 <i>0.488</i>	
# SPLA042-048-04.00-ACB	4.24 (SIZE 21)	1.70 <i>0.067</i>	48	4.000 <i>0.157</i>	8.00 <i>0.315</i>	64.70 <i>2.547</i>	Acetal - Black	Brass Insert - Set Screw	12.40 <i>0.488</i>	
# SPLA047-006-03.18-BR	4.699 (SIZE 19)	2.21 <i>0.087</i>	6	3.175 <i>0.125</i>	8.74 <i>0.344</i>	9.14 <i>0.360</i>	Brass	Plain - No Insert	6.35 <i>0.250</i>	
# SPLA047-007-03.18-BR	4.699 (SIZE 19)	2.21 <i>0.087</i>	7	3.175 <i>0.125</i>	8.74 <i>0.344</i>	10.41 <i>0.410</i>	Brass	Plain - No Insert	6.35 <i>0.250</i>	
# SPLA047-007-04.78-CS	4.699 (SIZE 19)	2.21 <i>0.087</i>	7	4.775 <i>0.188</i>	15.09 <i>0.594</i>	10.41 <i>0.410</i>	Carbon Steel	Plain - No Insert	9.53 <i>0.375</i>	

Indicates item not stocked at time of printing - Please enquire for lead time

E&OE Pricing and all details subject to change without notice - Copyright Miniature Bearings Australia Pty Ltd

MBA Size Listings are a guide to sizes only and must not be solely relied on for critical design information.

Sprockets - Ladder Chain

Part Number	Pitch (P) mm	Tooth Thickness (F.W.) mm	Teeth (No.)	Bore (d) mm	Overall Width (L) mm	Pitch Diameter mm	Material	Type	Hub Diameter mm	Locking Method
	<i>inches</i>	<i>inches</i>		<i>inches</i>	<i>inches</i>	<i>inches</i>			<i>inches</i>	
# SPLA047-008-03.18-BR	4.699 (SIZE 19)	2.21 <i>0.087</i>	8	3.175 <i>0.125</i>	8.74 <i>0.344</i>	11.94 <i>0.470</i>	Brass	Plain - No Insert	7.95 <i>0.313</i>	
# SPLA047-008-04.78-CS	4.699 (SIZE 19)	2.21 <i>0.087</i>	8	4.775 <i>0.188</i>	15.09 <i>0.594</i>	11.94 <i>0.470</i>	Carbon Steel	Plain - No Insert	11.13 <i>0.438</i>	
# SPLA047-009-03.18-BR	4.699 (SIZE 19)	2.21 <i>0.087</i>	9	3.175 <i>0.125</i>	8.74 <i>0.344</i>	13.46 <i>0.530</i>	Brass	Plain - No Insert	9.53 <i>0.375</i>	
# SPLA047-009-06.35-CS	4.699 (SIZE 19)	2.21 <i>0.087</i>	9	6.350 <i>0.250</i>	15.09 <i>0.594</i>	13.46 <i>0.530</i>	Carbon Steel	Plain - No Insert	12.70 <i>0.500</i>	
# SPLA047-010-06.35-CS	4.699 (SIZE 19)	2.21 <i>0.087</i>	10	6.350 <i>0.250</i>	15.09 <i>0.594</i>	14.99 <i>0.590</i>	Carbon Steel	Plain - No Insert	14.30 <i>0.563</i>	
# SPLA047-010-03.18-BR	4.699 (SIZE 19)	2.21 <i>0.087</i>	10	3.175 <i>0.125</i>	8.74 <i>0.344</i>	14.99 <i>0.590</i>	Brass	Plain - No Insert	9.53 <i>0.375</i>	
# SPLA047-012-04.78-BR	4.699 (SIZE 19)	2.21 <i>0.087</i>	12	4.775 <i>0.188</i>	8.74 <i>0.344</i>	17.78 <i>0.700</i>	Brass	Plain - No Insert	11.13 <i>0.438</i>	
# SPLA047-012-06.35-CS	4.699 (SIZE 19)	2.21 <i>0.087</i>	12	6.350 <i>0.250</i>	15.09 <i>0.594</i>	17.78 <i>0.700</i>	Carbon Steel	Plain - No Insert	17.48 <i>0.688</i>	

Indicates item not stocked at time of printing - Please enquire for lead time

E&OE Pricing and all details subject to change without notice - Copyright Miniature Bearings Australia Pty Ltd

MBA Size Listings are a guide to sizes only and must not be solely relied on for critical design information.

Sprockets - Ladder Chain

Part Number	Pitch (P) mm	Tooth Thickness (F.W.) mm	Teeth (No.)	Bore (d) mm	Overall Width (L) mm	Pitch Diameter mm	Material	Type	Hub Diameter mm	Locking Method
	<i>inches</i>	<i>inches</i>		<i>inches</i>	<i>inches</i>	<i>inches</i>			<i>inches</i>	
# SPLA047-014-06.35-CS	4.699 (SIZE 19)	2.21 <i>0.087</i>	14	6.350 <i>0.250</i>	15.09 <i>0.594</i>	21.08 <i>0.830</i>	Carbon Steel	Plain - No Insert	19.05 <i>0.750</i>	
# SPLA047-015-04.78-BR	4.699 (SIZE 19)	2.21 <i>0.087</i>	15	4.775 <i>0.188</i>	8.74 <i>0.344</i>	22.10 <i>0.870</i>	Brass	Plain - No Insert	12.70 <i>0.500</i>	
# SPLA047-016-04.78-BR	4.699 (SIZE 19)	2.21 <i>0.087</i>	16	4.775 <i>0.188</i>	8.74 <i>0.344</i>	23.62 <i>0.930</i>	Brass	Plain - No Insert	12.70 <i>0.500</i>	
# SPLA047-016-07.95-CS	4.699 (SIZE 19)	2.21 <i>0.087</i>	16	7.950 <i>0.313</i>	15.09 <i>0.594</i>	23.62 <i>0.930</i>	Carbon Steel	Plain - No Insert	22.23 <i>0.875</i>	
# SPLA047-018-04.78-BR	4.699 (SIZE 19)	2.21 <i>0.087</i>	18	4.775 <i>0.188</i>	8.74 <i>0.344</i>	26.92 <i>1.060</i>	Brass	Plain - No Insert	12.70 <i>0.500</i>	
# SPLA047-020-04.78-BR	4.699 (SIZE 19)	2.21 <i>0.087</i>	20	4.775 <i>0.188</i>	8.74 <i>0.344</i>	29.46 <i>1.160</i>	Brass	Plain - No Insert	12.70 <i>0.500</i>	
# SPLA047-020-07.95-CS	4.699 (SIZE 19)	2.21 <i>0.087</i>	20	7.950 <i>0.313</i>	12.70 <i>0.500</i>	29.46 <i>1.160</i>	Carbon Steel	Plain - No Insert	22.23 <i>0.875</i>	
# SPLA047-024-04.78-BR	4.699 (SIZE 19)	2.21 <i>0.087</i>	24	4.775 <i>0.188</i>	8.74 <i>0.344</i>	35.05 <i>1.380</i>	Brass	Plain - No Insert	12.70 <i>0.500</i>	

Indicates item not stocked at time of printing - Please enquire for lead time

E&OE Pricing and all details subject to change without notice - Copyright Miniature Bearings Australia Pty Ltd

MBA Size Listings are a guide to sizes only and must not be solely relied on for critical design information.

Sprockets - Ladder Chain

Part Number	Pitch (P) mm	Tooth Thickness (F.W.) mm	Teeth (No.)	Bore (d) mm	Overall Width (L) mm	Pitch Diameter mm	Material	Type	Hub Diameter mm	Locking Method
	<i>inches</i>	<i>inches</i>		<i>inches</i>	<i>inches</i>	<i>inches</i>			<i>inches</i>	
# SPLA047-024-07.95-CS	4.699 (SIZE 19)	2.21 <i>0.087</i>	24	7.950 <i>0.313</i>	12.70 <i>0.500</i>	35.05 <i>1.380</i>	Carbon Steel	Plain - No Insert	22.23 <i>0.875</i>	
# SPLA047-032-06.35-BR	4.699 (SIZE 19)	2.21 <i>0.087</i>	32	6.350 <i>0.250</i>	10.31 <i>0.406</i>	47.24 <i>1.860</i>	Brass	Plain - No Insert	15.88 <i>0.625</i>	
# SPLA047-036-07.95-BR	4.699 (SIZE 19)	2.21 <i>0.087</i>	36	7.950 <i>0.313</i>	10.31 <i>0.406</i>	53.85 <i>2.120</i>	Brass	Plain - No Insert	17.48 <i>0.688</i>	
# SPLA047-048-07.95-BR	4.699 (SIZE 19)	2.21 <i>0.087</i>	48	7.950 <i>0.313</i>	10.31 <i>0.406</i>	70.61 <i>2.780</i>	Brass	Plain - No Insert	17.48 <i>0.688</i>	
# SPLA047-060-07.95-BR	4.699 (SIZE 19)	2.21 <i>0.087</i>	60	7.950 <i>0.313</i>	10.31 <i>0.406</i>	88.39 <i>3.480</i>	Brass	Plain - No Insert	17.48 <i>0.688</i>	
# SPLA047-072-07.95-BR	4.699 (SIZE 19)	2.21 <i>0.087</i>	72	7.950 <i>0.313</i>	10.31 <i>0.406</i>	106.93 <i>4.210</i>	Cast Brass	None	17.48 <i>0.688</i>	
# SPLA048-010-04.00-BR	4.80 <i>0.189</i>	2.00 <i>0.079</i>	10	4.000 <i>0.157</i>	9.00 <i>0.354</i>	15.50 <i>0.610</i>	Brass	With Hub	11.50 <i>0.453</i>	
# SPLA048-010-05.00-BR	4.80 <i>0.189</i>	2.00 <i>0.079</i>	10	5.000 <i>0.197</i>	9.00 <i>0.354</i>	15.50 <i>0.610</i>	Brass	With Hub	11.50 <i>0.453</i>	
# SPLA048-010-06.00-BR	4.80 <i>0.189</i>	2.00 <i>0.079</i>	10	6.000 <i>0.236</i>	9.00 <i>0.354</i>	15.50 <i>0.610</i>	Brass	With Hub	11.50 <i>0.453</i>	

Indicates item not stocked at time of printing - Please enquire for lead time

E&OE Pricing and all details subject to change without notice - Copyright Miniature Bearings Australia Pty Ltd

MBA Size Listings are a guide to sizes only and must not be solely relied on for critical design information.

Sprockets - Ladder Chain

Part Number	Pitch (P) mm	Tooth Thickness (F.W.) mm	Teeth (No.)	Bore (d) mm	Overall Width (L) mm	Pitch Diameter mm	Material	Type	Hub Diameter mm	Locking Method
	<i>inches</i>	<i>inches</i>		<i>inches</i>	<i>inches</i>	<i>inches</i>			<i>inches</i>	
# SPLA048-011-06.00-BR	4.80 <i>0.189</i>	2.00 <i>0.079</i>	11	6.000 <i>0.236</i>	9.00 <i>0.354</i>	17.00 <i>0.669</i>	Brass	With Hub	13.00 <i>0.512</i>	
# SPLA048-012-06.00-BR	4.80 <i>0.189</i>	2.00 <i>0.079</i>	12	6.000 <i>0.236</i>	9.00 <i>0.354</i>	18.50 <i>0.728</i>	Brass	With Hub	14.00 <i>0.551</i>	
# SPLA048-013-06.00-BR	4.80 <i>0.189</i>	2.00 <i>0.079</i>	13	6.000 <i>0.236</i>	9.00 <i>0.354</i>	20.10 <i>0.791</i>	Brass	With Hub	15.00 <i>0.591</i>	
# SPLA048-014-06.00-BR	4.80 <i>0.189</i>	2.00 <i>0.079</i>	14	6.000 <i>0.236</i>	9.00 <i>0.354</i>	21.60 <i>0.850</i>	Brass	With Hub	17.00 <i>0.669</i>	
# SPLA048-015-06.00-BR	4.80 <i>0.189</i>	2.00 <i>0.079</i>	15	6.000 <i>0.236</i>	9.00 <i>0.354</i>	23.10 <i>0.909</i>	Brass	With Hub	18.00 <i>0.709</i>	
# SPLA048-016-06.00-BR	4.80 <i>0.189</i>	2.00 <i>0.079</i>	16	6.000 <i>0.236</i>	9.00 <i>0.354</i>	24.60 <i>0.969</i>	Brass	With Hub	19.00 <i>0.748</i>	
# SPLA048-018-06.00-BR	4.80 <i>0.189</i>	2.00 <i>0.079</i>	18	6.000 <i>0.236</i>	9.00 <i>0.354</i>	27.60 <i>1.087</i>	Brass	With Hub	21.00 <i>0.827</i>	
# SPLA048-020-06.00-BR	4.80 <i>0.189</i>	2.00 <i>0.079</i>	20	6.000 <i>0.236</i>	9.00 <i>0.354</i>	30.70 <i>1.209</i>	Brass	With Hub	23.00 <i>0.906</i>	
# SPLA048-022-06.00-BR	4.80 <i>0.189</i>	2.00 <i>0.079</i>	22	6.000 <i>0.236</i>	9.00 <i>0.354</i>	33.70 <i>1.327</i>	Brass	With Hub	25.00 <i>0.984</i>	
# SPLA048-024-06.00-BR	4.80 <i>0.189</i>	2.00 <i>0.079</i>	24	6.000 <i>0.236</i>	9.00 <i>0.354</i>	36.80 <i>1.449</i>	Brass	With Hub	20.00 <i>0.787</i>	

Indicates item not stocked at time of printing - Please enquire for lead time

E&OE Pricing and all details subject to change without notice - Copyright Miniature Bearings Australia Pty Ltd

MBA Size Listings are a guide to sizes only and must not be solely relied on for critical design information.

Sprockets - Ladder Chain

Part Number	Pitch (P) mm	Tooth Thickness (F.W.) mm	Teeth (No.)	Bore (d) mm	Overall Width (L) mm	Pitch Diameter mm	Material	Type	Hub Diameter mm	Locking Method
	<i>inches</i>	<i>inches</i>		<i>inches</i>	<i>inches</i>	<i>inches</i>			<i>inches</i>	
# SPLA048-024-08.00-BR	4.80	2.00	24	8.000	9.00	36.80	Brass	Plain - No Insert	20.00	
	<i>0.189</i>	<i>0.079</i>		<i>0.315</i>	<i>0.354</i>	<i>1.449</i>			<i>0.787</i>	
# SPLA048-026-06.00-BR	4.80	2.00	26	6.000	9.00	39.80	Brass	With Hub	20.00	
	<i>0.189</i>	<i>0.079</i>		<i>0.236</i>	<i>0.354</i>	<i>1.567</i>			<i>0.787</i>	
# SPLA048-026-08.00-BR	4.80	2.00	26	8.000	9.00	39.80	Brass	Plain - No Insert	20.00	
	<i>0.189</i>	<i>0.079</i>		<i>0.315</i>	<i>0.354</i>	<i>1.567</i>			<i>0.787</i>	
# SPLA048-028-06.00-BR	4.80	2.00	28	6.000	9.00	42.90	Brass	With Hub	20.00	
	<i>0.189</i>	<i>0.079</i>		<i>0.236</i>	<i>0.354</i>	<i>1.689</i>			<i>0.787</i>	
# SPLA048-028-08.00-BR	4.80	2.00	28	8.000	9.00	42.90	Brass	Plain - No Insert	20.00	
	<i>0.189</i>	<i>0.079</i>		<i>0.315</i>	<i>0.354</i>	<i>1.689</i>			<i>0.787</i>	
# SPLA048-030-06.00-BR	4.80	2.00	30	6.000	9.00	45.90	Brass	With Hub	20.00	
	<i>0.189</i>	<i>0.079</i>		<i>0.236</i>	<i>0.354</i>	<i>1.807</i>			<i>0.787</i>	
# SPLA048-030-08.00-BR	4.80	2.00	30	8.000	9.00	45.90	Brass	Plain - No Insert	20.00	
	<i>0.189</i>	<i>0.079</i>		<i>0.315</i>	<i>0.354</i>	<i>1.807</i>			<i>0.787</i>	
# SPLA073-008-06.00-ACE	7.264 (SIZE 18)	2.54	8	6.000	8.90	19.00	Acetal - Black	Plain - No Insert	12.50	
		<i>0.100</i>		<i>0.236</i>	<i>0.350</i>	<i>0.748</i>			<i>0.492</i>	
# SPLA073-010-06.00-ACE	7.264 (SIZE 18)	2.54	10	6.000	8.90	23.50	Acetal - Black	Plain - No Insert	12.50	
		<i>0.100</i>		<i>0.236</i>	<i>0.350</i>	<i>0.925</i>			<i>0.492</i>	

Indicates item not stocked at time of printing - Please enquire for lead time

E&OE Pricing and all details subject to change without notice - Copyright Miniature Bearings Australia Pty Ltd

MBA Size Listings are a guide to sizes only and must not be solely relied on for critical design information.

Sprockets - Ladder Chain

Part Number	Pitch (P) mm <i>inches</i>	Tooth Thickness (F.W.) mm <i>inches</i>	Teeth (No.)	Bore (d) mm <i>inches</i>	Overall Width (L) mm <i>inches</i>	Pitch Diameter mm <i>inches</i>	Material	Type	Hub Diameter mm <i>inches</i>	Locking Method
# SPLA073-012-06.00-ACE	7.264 (SIZE 18)	2.54 <i>0.100</i>	12	6.000 <i>0.236</i>	8.90 <i>0.350</i>	28.00 <i>1.102</i>	Acetal - Black	Plain - No Insert	12.50 <i>0.492</i>	
# SPLA073-013-08.00-ACE	7.264 (SIZE 18)	2.54 <i>0.100</i>	13	8.000 <i>0.315</i>	12.70 <i>0.500</i>	30.30 <i>1.193</i>	Acetal - Black	Plain - No Insert	15.90 <i>0.626</i>	
# SPLA073-013-04.00-ACB	7.264 (SIZE 18)	2.54 <i>0.100</i>	13	4.000 <i>0.157</i>	12.70 <i>0.500</i>	30.30 <i>1.193</i>	Acetal - Black	Brass Insert - Set Screw	16.00 <i>0.630</i>	
# SPLA073-013-06.00-ACE	7.264 (SIZE 18)	2.54 <i>0.100</i>	13	6.000 <i>0.236</i>	10.20 <i>0.402</i>	30.30 <i>1.193</i>	Acetal - Black	Plain - No Insert	12.70 <i>0.500</i>	
# SPLA073-013-06.00-ACB	7.264 (SIZE 18)	2.54 <i>0.100</i>	13	6.000 <i>0.236</i>	12.70 <i>0.500</i>	30.30 <i>1.193</i>	Acetal - Black	Brass Insert - Set Screw	16.00 <i>0.630</i>	
# SPLA073-014-04.00-ACB	7.264 (SIZE 18)	2.54 <i>0.100</i>	14	4.000 <i>0.157</i>	12.70 <i>0.500</i>	32.60 <i>1.283</i>	Acetal - Black	Brass Insert - Set Screw	16.00 <i>0.630</i>	
# SPLA073-014-08.00-ACE	7.264 (SIZE 18)	2.54 <i>0.100</i>	14	8.000 <i>0.315</i>	12.70 <i>0.500</i>	32.60 <i>1.283</i>	Acetal - Black	Plain - No Insert	15.90 <i>0.626</i>	
# SPLA073-014-06.00-ACE	7.264 (SIZE 18)	2.54 <i>0.100</i>	14	6.000 <i>0.236</i>	10.20 <i>0.402</i>	32.60 <i>1.283</i>	Acetal - Black	Plain - No Insert	12.70 <i>0.500</i>	

Indicates item not stocked at time of printing - Please enquire for lead time

E&OE Pricing and all details subject to change without notice - Copyright Miniature Bearings Australia Pty Ltd

MBA Size Listings are a guide to sizes only and must not be solely relied on for critical design information.

Sprockets - Ladder Chain

Part Number	Pitch (P) mm	Tooth Thickness (F.W.) mm	Teeth (No.)	Bore (d) mm	Overall Width (L) mm	Pitch Diameter mm	Material	Type	Hub Diameter mm	Locking Method
	<i>inches</i>	<i>inches</i>		<i>inches</i>	<i>inches</i>	<i>inches</i>			<i>inches</i>	
# SPLA073-014-06.00-ACB	7.264 (SIZE 18)	2.54 <i>0.100</i>	14	6.000 <i>0.236</i>	12.70 <i>0.500</i>	32.60 <i>1.283</i>	Acetal - Black	Brass Insert - Set Screw	16.00 <i>0.630</i>	
# SPLA073-015-08.00-ACE	7.264 (SIZE 18)	2.54 <i>0.100</i>	15	8.000 <i>0.315</i>	12.70 <i>0.500</i>	34.90 <i>1.374</i>	Acetal - Black	Plain - No Insert	15.90 <i>0.626</i>	
# SPLA073-015-04.00-ACB	7.264 (SIZE 18)	2.54 <i>0.100</i>	15	4.000 <i>0.157</i>	12.70 <i>0.500</i>	34.90 <i>1.374</i>	Acetal - Black	Brass Insert - Set Screw	16.00 <i>0.630</i>	
# SPLA073-015-06.00-ACB	7.264 (SIZE 18)	2.54 <i>0.100</i>	15	6.000 <i>0.236</i>	12.70 <i>0.500</i>	34.90 <i>1.374</i>	Acetal - Black	Brass Insert - Set Screw	16.00 <i>0.630</i>	
# SPLA073-015-06.00-ACE	7.264 (SIZE 18)	2.54 <i>0.100</i>	15	6.000 <i>0.236</i>	10.20 <i>0.402</i>	34.90 <i>1.374</i>	Acetal - Black	Plain - No Insert	12.70 <i>0.500</i>	
# SPLA073-016-08.00-ACE	7.264 (SIZE 18)	2.54 <i>0.100</i>	16	8.000 <i>0.315</i>	12.70 <i>0.500</i>	37.20 <i>1.465</i>	Acetal - Black	Plain - No Insert	15.90 <i>0.626</i>	
# SPLA073-016-06.00-ACB	7.264 (SIZE 18)	2.54 <i>0.100</i>	16	6.000 <i>0.236</i>	12.70 <i>0.500</i>	37.20 <i>1.465</i>	Acetal - Black	Brass Insert - Set Screw	16.00 <i>0.630</i>	
# SPLA073-016-06.00-ACE	7.264 (SIZE 18)	2.54 <i>0.100</i>	16	6.000 <i>0.236</i>	10.20 <i>0.402</i>	37.20 <i>1.465</i>	Acetal - Black	Plain - No Insert	12.70 <i>0.500</i>	

Indicates item not stocked at time of printing - Please enquire for lead time

E&OE Pricing and all details subject to change without notice - Copyright Miniature Bearings Australia Pty Ltd

MBA Size Listings are a guide to sizes only and must not be solely relied on for critical design information.

Sprockets - Ladder Chain

Part Number	Pitch (P) mm <i>inches</i>	Tooth Thickness (F.W.) mm <i>inches</i>	Teeth (No.)	Bore (d) mm <i>inches</i>	Overall Width (L) mm <i>inches</i>	Pitch Diameter mm <i>inches</i>	Material	Type	Hub Diameter mm <i>inches</i>	Locking Method
# SPLA073-016-04.00-ACB	7.264 (SIZE 18)	2.54 <i>0.100</i>	16	4.000 <i>0.157</i>	12.70 <i>0.500</i>	37.20 <i>1.465</i>	Acetal - Black	Brass Insert - Set Screw	16.00 <i>0.630</i>	
# SPLA073-018-06.00-ACE	7.264 (SIZE 18)	2.54 <i>0.100</i>	18	6.000 <i>0.236</i>	10.20 <i>0.402</i>	41.80 <i>1.646</i>	Acetal - Black	Plain - No Insert	12.70 <i>0.500</i>	
# SPLA073-018-08.00-ACE	7.264 (SIZE 18)	2.54 <i>0.100</i>	18	8.000 <i>0.315</i>	12.70 <i>0.500</i>	41.80 <i>1.646</i>	Acetal - Black	Plain - No Insert	15.90 <i>0.626</i>	
# SPLA073-018-04.00-ACB	7.264 (SIZE 18)	2.54 <i>0.100</i>	18	4.000 <i>0.157</i>	12.70 <i>0.500</i>	41.80 <i>1.646</i>	Acetal - Black	Brass Insert - Set Screw	16.00 <i>0.630</i>	
# SPLA073-018-06.00-ACB	7.264 (SIZE 18)	2.54 <i>0.100</i>	18	6.000 <i>0.236</i>	12.70 <i>0.500</i>	41.80 <i>1.646</i>	Acetal - Black	Brass Insert - Set Screw	16.00 <i>0.630</i>	
# SPLA073-020-06.00-ACE	7.264 (SIZE 18)	2.54 <i>0.100</i>	20	6.000 <i>0.236</i>	10.20 <i>0.402</i>	46.40 <i>1.827</i>	Acetal - Black	Plain - No Insert	12.70 <i>0.500</i>	
# SPLA073-020-08.00-ACE	7.264 (SIZE 18)	2.54 <i>0.100</i>	20	8.000 <i>0.315</i>	12.70 <i>0.500</i>	46.40 <i>1.827</i>	Acetal - Black	Plain - No Insert	15.90 <i>0.626</i>	
# SPLA073-020-06.00-ACB	7.264 (SIZE 18)	2.54 <i>0.100</i>	20	6.000 <i>0.236</i>	12.70 <i>0.500</i>	46.40 <i>1.827</i>	Acetal - Black	Brass Insert - Set Screw	16.00 <i>0.630</i>	

Indicates item not stocked at time of printing - Please enquire for lead time

E&OE Pricing and all details subject to change without notice - Copyright Miniature Bearings Australia Pty Ltd

MBA Size Listings are a guide to sizes only and must not be solely relied on for critical design information.

Sprockets - Ladder Chain

Part Number	Pitch (P) mm	Tooth Thickness (F.W.) mm	Teeth (No.)	Bore (d) mm	Overall Width (L) mm	Pitch Diameter mm	Material	Type	Hub Diameter mm	Locking Method
	<i>inches</i>	<i>inches</i>		<i>inches</i>	<i>inches</i>	<i>inches</i>			<i>inches</i>	
# SPLA073-020-04.00-ACB	7.264 (SIZE 18)	2.54 <i>0.100</i>	20	4.000 <i>0.157</i>	12.70 <i>0.500</i>	46.40 <i>1.827</i>	Acetal - Black	Brass Insert - Set Screw	16.00 <i>0.630</i>	
# SPLA073-022-04.00-ACB	7.264 (SIZE 18)	2.54 <i>0.100</i>	22	4.000 <i>0.157</i>	12.70 <i>0.500</i>	51.00 <i>2.008</i>	Acetal - Black	Brass Insert - Set Screw	16.00 <i>0.630</i>	
# SPLA073-022-06.00-ACB	7.264 (SIZE 18)	2.54 <i>0.100</i>	22	6.000 <i>0.236</i>	12.70 <i>0.500</i>	51.00 <i>2.008</i>	Acetal - Black	Brass Insert - Set Screw	16.00 <i>0.630</i>	
# SPLA073-022-08.00-ACE	7.264 (SIZE 18)	2.54 <i>0.100</i>	22	8.000 <i>0.315</i>	12.70 <i>0.500</i>	51.00 <i>2.008</i>	Acetal - Black	Plain - No Insert	15.90 <i>0.626</i>	
# SPLA073-022-06.00-ACE	7.264 (SIZE 18)	2.54 <i>0.100</i>	22	6.000 <i>0.236</i>	10.20 <i>0.402</i>	51.00 <i>2.008</i>	Acetal - Black	Plain - No Insert	12.70 <i>0.500</i>	
# SPLA073-024-08.00-ACE	7.264 (SIZE 18)	2.54 <i>0.100</i>	24	8.000 <i>0.315</i>	12.70 <i>0.500</i>	55.60 <i>2.189</i>	Acetal - Black	Plain - No Insert	15.90 <i>0.626</i>	
# SPLA073-024-10.00-ACE	7.264 (SIZE 18)	2.54 <i>0.100</i>	24	10.000 <i>0.394</i>	12.70 <i>0.500</i>	55.60 <i>2.189</i>	Acetal - Black	Plain - No Insert	19.00 <i>0.748</i>	
# SPLA073-024-08.00-ACB	7.264 (SIZE 18)	2.54 <i>0.100</i>	24	8.000 <i>0.315</i>	12.70 <i>0.500</i>	55.60 <i>2.189</i>	Acetal - Black	Brass Insert - Set Screw	19.00 <i>0.748</i>	

Indicates item not stocked at time of printing - Please enquire for lead time

E&OE Pricing and all details subject to change without notice - Copyright Miniature Bearings Australia Pty Ltd

MBA Size Listings are a guide to sizes only and must not be solely relied on for critical design information.

Sprockets - Ladder Chain

Part Number	Pitch (P) mm <i>inches</i>	Tooth Thickness (F.W.) mm <i>inches</i>	Teeth (No.)	Bore (d) mm <i>inches</i>	Overall Width (L) mm <i>inches</i>	Pitch Diameter mm <i>inches</i>	Material	Type	Hub Diameter mm <i>inches</i>	Locking Method
# SPLA073-024-06.00-ACB	7.264 (SIZE 18)	2.54 <i>0.100</i>	24	6.000 <i>0.236</i>	12.70 <i>0.500</i>	55.60 <i>2.189</i>	Acetal - Black	Brass Insert - Set Screw	16.00 <i>0.630</i>	
# SPLA073-024-04.00-ACB	7.264 (SIZE 18)	2.54 <i>0.100</i>	24	4.000 <i>0.157</i>	12.70 <i>0.500</i>	55.60 <i>2.189</i>	Acetal - Black	Brass Insert - Set Screw	16.00 <i>0.630</i>	
# SPLA073-024-06.00-ACE	7.264 (SIZE 18)	2.54 <i>0.100</i>	24	6.000 <i>0.236</i>	10.20 <i>0.402</i>	51.00 <i>2.008</i>	Acetal - Black	Plain - No Insert	12.70 <i>0.500</i>	
# SPLA073-025-06.00-ACB	7.264 (SIZE 18)	2.54 <i>0.100</i>	25	6.000 <i>0.236</i>	12.70 <i>0.500</i>	57.90 <i>2.280</i>	Acetal - Black	Brass Insert - Set Screw	16.00 <i>0.630</i>	
# SPLA073-025-10.00-ACE	7.264 (SIZE 18)	2.54 <i>0.100</i>	25	10.000 <i>0.394</i>	12.70 <i>0.500</i>	57.90 <i>2.280</i>	Acetal - Black	Plain - No Insert	19.00 <i>0.748</i>	
# SPLA073-025-08.00-ACE	7.264 (SIZE 18)	2.54 <i>0.100</i>	25	8.000 <i>0.315</i>	12.70 <i>0.500</i>	57.90 <i>2.280</i>	Acetal - Black	Plain - No Insert	15.90 <i>0.626</i>	
# SPLA073-025-06.00-ACE	7.264 (SIZE 18)	2.54 <i>0.100</i>	25	6.000 <i>0.236</i>	10.20 <i>0.402</i>	55.60 <i>2.189</i>	Acetal - Black	Plain - No Insert	12.70 <i>0.500</i>	
# SPLA073-025-04.00-ACB	7.264 (SIZE 18)	2.54 <i>0.100</i>	25	4.000 <i>0.157</i>	12.70 <i>0.500</i>	57.90 <i>2.280</i>	Acetal - Black	Brass Insert - Set Screw	16.00 <i>0.630</i>	

Indicates item not stocked at time of printing - Please enquire for lead time

E&OE Pricing and all details subject to change without notice - Copyright Miniature Bearings Australia Pty Ltd

MBA Size Listings are a guide to sizes only and must not be solely relied on for critical design information.

Sprockets - Ladder Chain

Part Number	Pitch (P) mm	Tooth Thickness (F.W.) mm	Teeth (No.)	Bore (d) mm	Overall Width (L) mm	Pitch Diameter mm	Material	Type	Hub Diameter mm	Locking Method
	<i>inches</i>	<i>inches</i>		<i>inches</i>	<i>inches</i>	<i>inches</i>			<i>inches</i>	
# SPLA073-025-08.00-ACB	7.264 (SIZE 18)	2.54 <i>0.100</i>	25	8.000 <i>0.315</i>	12.70 <i>0.500</i>	57.90 <i>2.280</i>	Acetal - Black	Brass Insert - Set Screw	19.00 <i>0.748</i>	
# SPLA073-030-06.00-ACB	7.264 (SIZE 18)	2.54 <i>0.100</i>	30	6.000 <i>0.236</i>	12.70 <i>0.500</i>	69.40 <i>2.732</i>	Acetal - Black	Brass Insert - Set Screw	16.00 <i>0.630</i>	
# SPLA073-030-04.00-ACB	7.264 (SIZE 18)	2.54 <i>0.100</i>	30	4.000 <i>0.157</i>	12.70 <i>0.500</i>	69.40 <i>2.732</i>	Acetal - Black	Brass Insert - Set Screw	16.00 <i>0.630</i>	
# SPLA073-030-10.00-ACE	7.264 (SIZE 18)	2.54 <i>0.100</i>	30	10.000 <i>0.394</i>	12.70 <i>0.500</i>	69.40 <i>2.732</i>	Acetal - Black	Plain - No Insert	19.00 <i>0.748</i>	
# SPLA073-030-06.00-ACE	7.264 (SIZE 18)	2.54 <i>0.100</i>	30	6.000 <i>0.236</i>	10.20 <i>0.402</i>	57.90 <i>2.280</i>	Acetal - Black	Plain - No Insert	12.70 <i>0.500</i>	
# SPLA073-030-08.00-ACB	7.264 (SIZE 18)	2.54 <i>0.100</i>	30	8.000 <i>0.315</i>	12.70 <i>0.500</i>	69.40 <i>2.732</i>	Acetal - Black	Brass Insert - Set Screw	19.00 <i>0.748</i>	
# SPLA073-030-08.00-ACE	7.264 (SIZE 18)	2.54 <i>0.100</i>	30	8.000 <i>0.315</i>	12.70 <i>0.500</i>	69.40 <i>2.732</i>	Acetal - Black	Plain - No Insert	15.90 <i>0.626</i>	
# SPLA073-032-10.00-ACE	7.264 (SIZE 18)	2.54 <i>0.100</i>	32	10.000 <i>0.394</i>	12.70 <i>0.500</i>	74.00 <i>2.913</i>	Acetal - Black	Plain - No Insert	19.00 <i>0.748</i>	

Indicates item not stocked at time of printing - Please enquire for lead time

E&OE Pricing and all details subject to change without notice - Copyright Miniature Bearings Australia Pty Ltd

MBA Size Listings are a guide to sizes only and must not be solely relied on for critical design information.

Sprockets - Ladder Chain

Part Number	Pitch (P) mm	Tooth Thickness (F.W.) mm	Teeth (No.)	Bore (d) mm	Overall Width (L) mm	Pitch Diameter mm	Material	Type	Hub Diameter mm	Locking Method
	<i>inches</i>	<i>inches</i>		<i>inches</i>	<i>inches</i>	<i>inches</i>			<i>inches</i>	
# SPLA073-032-06.00-ACB	7.264 (SIZE 18)	2.54 <i>0.100</i>	32	6.000 <i>0.236</i>	12.70 <i>0.500</i>	74.00 <i>2.913</i>	Acetal - Black	Brass Insert - Set Screw	16.00 <i>0.630</i>	
# SPLA073-032-08.00-ACB	7.264 (SIZE 18)	2.54 <i>0.100</i>	32	8.000 <i>0.315</i>	12.70 <i>0.500</i>	74.00 <i>2.913</i>	Acetal - Black	Brass Insert - Set Screw	19.00 <i>0.748</i>	
# SPLA073-032-08.00-ACE	7.264 (SIZE 18)	2.54 <i>0.100</i>	32	8.000 <i>0.315</i>	12.70 <i>0.500</i>	74.00 <i>2.913</i>	Acetal - Black	Plain - No Insert	15.90 <i>0.626</i>	
# SPLA073-036-06.00-ACB	7.264 (SIZE 18)	2.54 <i>0.100</i>	36	6.000 <i>0.236</i>	12.70 <i>0.500</i>	83.30 <i>3.280</i>	Acetal - Black	Brass Insert - Set Screw	16.00 <i>0.630</i>	
# SPLA073-036-08.00-ACB	7.264 (SIZE 18)	2.54 <i>0.100</i>	36	8.000 <i>0.315</i>	12.70 <i>0.500</i>	92.50 <i>3.642</i>	Acetal - Black	Brass Insert - Set Screw	19.00 <i>0.748</i>	
# SPLA073-036-08.00-ACE	7.264 (SIZE 18)	2.54 <i>0.100</i>	36	8.000 <i>0.315</i>	12.70 <i>0.500</i>	83.30 <i>3.280</i>	Acetal - Black	Plain - No Insert	15.90 <i>0.626</i>	
# SPLA073-036-10.00-ACE	7.264 (SIZE 18)	2.54 <i>0.100</i>	36	10.000 <i>0.394</i>	12.70 <i>0.500</i>	83.30 <i>3.280</i>	Acetal - Black	Plain - No Insert	19.00 <i>0.748</i>	
# SPLA073-040-08.00-ACB	7.264 (SIZE 18)	2.54 <i>0.100</i>	40	8.000 <i>0.315</i>	12.70 <i>0.500</i>	111.00 <i>4.370</i>	Acetal - Black	Brass Insert - Set Screw	19.00 <i>0.748</i>	

Indicates item not stocked at time of printing - Please enquire for lead time

E&OE Pricing and all details subject to change without notice - Copyright Miniature Bearings Australia Pty Ltd

MBA Size Listings are a guide to sizes only and must not be solely relied on for critical design information.

Sprockets - Ladder Chain

Part Number	Pitch (P) mm	Tooth Thickness (F.W.) mm	Teeth (No.)	Bore (d) mm	Overall Width (L) mm	Pitch Diameter mm	Material	Type	Hub Diameter mm	Locking Method
	<i>inches</i>	<i>inches</i>		<i>inches</i>	<i>inches</i>	<i>inches</i>			<i>inches</i>	
# SPLA073-040-10.00-ACE	7.264 (SIZE 18)	2.54 <i>0.100</i>	40	10.000 <i>0.394</i>	12.70 <i>0.500</i>	92.50 <i>3.642</i>	Acetal - Black	Plain - No Insert	19.00 <i>0.748</i>	
# SPLA073-048-08.00-ACB	7.264 (SIZE 18)	2.54 <i>0.100</i>	48	8.000 <i>0.315</i>	12.70 <i>0.500</i>	124.80 <i>4.913</i>	Acetal - Black	Brass Insert - Set Screw	19.00 <i>0.748</i>	
# SPLA073-048-10.00-ACE	7.264 (SIZE 18)	2.54 <i>0.100</i>	48	10.000 <i>0.394</i>	12.70 <i>0.500</i>	111.00 <i>4.370</i>	Acetal - Black	Plain - No Insert	19.00 <i>0.748</i>	
# SPLA073-054-10.00-ACE	7.264 (SIZE 18)	2.54 <i>0.100</i>	54	10.000 <i>0.394</i>	12.70 <i>0.500</i>	124.80 <i>4.913</i>	Acetal - Black	Plain - No Insert	19.00 <i>0.748</i>	
# SPLA073-008-06.35-ACE	7.264 (SIZE 18)	2.54 <i>0.100</i>	8	6.350 <i>0.250</i>	8.89 <i>0.350</i>	18.97 <i>0.747</i>	Acetal - Black	Plain - No Insert	12.45 <i>0.490</i>	
# SPLA073-010-06.35-ACE	7.264 (SIZE 18)	2.54 <i>0.100</i>	10	6.350 <i>0.250</i>	8.89 <i>0.350</i>	23.50 <i>0.925</i>	Acetal - Black	Plain - No Insert	12.45 <i>0.490</i>	
# SPLA073-012-06.35-ACE	7.264 (SIZE 18)	2.54 <i>0.100</i>	12	6.350 <i>0.250</i>	8.89 <i>0.350</i>	28.04 <i>1.104</i>	Acetal - Black	Plain - No Insert	12.45 <i>0.490</i>	
# SPLA073-013-04.78-ACB	7.264 (SIZE 18)	2.54 <i>0.100</i>	13	4.775 <i>0.188</i>	12.70 <i>0.500</i>	30.33 <i>1.194</i>	Acetal - Black	Brass Insert - Set Screw	15.88 <i>0.625</i>	

Indicates item not stocked at time of printing - Please enquire for lead time

E&OE Pricing and all details subject to change without notice - Copyright Miniature Bearings Australia Pty Ltd

MBA Size Listings are a guide to sizes only and must not be solely relied on for critical design information.

Sprockets - Ladder Chain

Part Number	Pitch (P) mm <i>inches</i>	Tooth Thickness (F.W.) mm <i>inches</i>	Teeth (No.)	Bore (d) mm <i>inches</i>	Overall Width (L) mm <i>inches</i>	Pitch Diameter mm <i>inches</i>	Material	Type	Hub Diameter mm <i>inches</i>	Locking Method
# SPLA073-013-06.35-ACB	7.264 (SIZE 18)	2.54 <i>0.100</i>	13	6.350 <i>0.250</i>	12.70 <i>0.500</i>	30.33 <i>1.194</i>	Acetal - Black	Brass Insert - Set Screw	15.88 <i>0.625</i>	
# SPLA073-013-09.53-ACE	7.264 (SIZE 18)	2.54 <i>0.100</i>	13	9.525 <i>0.375</i>	12.70 <i>0.500</i>	30.33 <i>1.194</i>	Acetal - Black	Plain - No Insert	15.88 <i>0.625</i>	
# SPLA073-013-06.35-ACE	7.264 (SIZE 18)	2.54 <i>0.100</i>	13	6.350 <i>0.250</i>	10.16 <i>0.400</i>	30.33 <i>1.194</i>	Acetal - Black	Plain - No Insert	12.70 <i>0.500</i>	
# SPLA073-014-04.78-ACB	7.264 (SIZE 18)	2.54 <i>0.100</i>	14	4.775 <i>0.188</i>	12.70 <i>0.500</i>	32.61 <i>1.284</i>	Acetal - Black	Brass Insert - Set Screw	15.88 <i>0.625</i>	
# SPLA073-014-06.35-ACB	7.264 (SIZE 18)	2.54 <i>0.100</i>	14	6.350 <i>0.250</i>	12.70 <i>0.500</i>	32.61 <i>1.284</i>	Acetal - Black	Brass Insert - Set Screw	15.88 <i>0.625</i>	
# SPLA073-014-06.35-ACE	7.264 (SIZE 18)	2.54 <i>0.100</i>	14	6.350 <i>0.250</i>	10.16 <i>0.400</i>	32.61 <i>1.284</i>	Acetal - Black	Plain - No Insert	12.70 <i>0.500</i>	
# SPLA073-014-09.53-ACE	7.264 (SIZE 18)	2.54 <i>0.100</i>	14	9.525 <i>0.375</i>	12.70 <i>0.500</i>	32.61 <i>1.284</i>	Acetal - Black	Plain - No Insert	15.88 <i>0.625</i>	
# SPLA073-015-06.35-ACE	7.264 (SIZE 18)	2.54 <i>0.100</i>	15	6.350 <i>0.250</i>	10.16 <i>0.400</i>	34.90 <i>1.374</i>	Acetal - Black	Plain - No Insert	12.70 <i>0.500</i>	

Indicates item not stocked at time of printing - Please enquire for lead time

E&OE Pricing and all details subject to change without notice - Copyright Miniature Bearings Australia Pty Ltd

MBA Size Listings are a guide to sizes only and must not be solely relied on for critical design information.

Sprockets - Ladder Chain

Part Number	Pitch (P) mm <i>inches</i>	Tooth Thickness (F.W.) mm <i>inches</i>	Teeth (No.)	Bore (d) mm <i>inches</i>	Overall Width (L) mm <i>inches</i>	Pitch Diameter mm <i>inches</i>	Material	Type	Hub Diameter mm <i>inches</i>	Locking Method
# SPLA073-015-06.35-ACB	7.264 (SIZE 18)	2.54 <i>0.100</i>	15	6.350 <i>0.250</i>	12.70 <i>0.500</i>	34.90 <i>1.374</i>	Acetal - Black	Brass Insert - Set Screw	15.88 <i>0.625</i>	
# SPLA073-015-09.53-ACE	7.264 (SIZE 18)	2.54 <i>0.100</i>	15	9.525 <i>0.375</i>	12.70 <i>0.500</i>	34.90 <i>1.374</i>	Acetal - Black	Plain - No Insert	15.88 <i>0.625</i>	
# SPLA073-015-04.78-ACB	7.264 (SIZE 18)	2.54 <i>0.100</i>	15	4.775 <i>0.188</i>	12.70 <i>0.500</i>	34.90 <i>1.374</i>	Acetal - Black	Brass Insert - Set Screw	15.88 <i>0.625</i>	
# SPLA073-016-04.78-ACB	7.264 (SIZE 18)	2.54 <i>0.100</i>	16	4.775 <i>0.188</i>	12.70 <i>0.500</i>	37.21 <i>1.465</i>	Acetal - Black	Brass Insert - Set Screw	15.88 <i>0.625</i>	
# SPLA073-016-06.35-ACB	7.264 (SIZE 18)	2.54 <i>0.100</i>	16	6.350 <i>0.250</i>	12.70 <i>0.500</i>	37.21 <i>1.465</i>	Acetal - Black	Brass Insert - Set Screw	15.88 <i>0.625</i>	
# SPLA073-016-06.35-ACE	7.264 (SIZE 18)	2.54 <i>0.100</i>	16	6.350 <i>0.250</i>	10.16 <i>0.400</i>	37.21 <i>1.465</i>	Acetal - Black	Plain - No Insert	12.70 <i>0.500</i>	
# SPLA073-016-09.53-ACE	7.264 (SIZE 18)	2.54 <i>0.100</i>	16	9.525 <i>0.375</i>	12.70 <i>0.500</i>	37.21 <i>1.465</i>	Acetal - Black	Plain - No Insert	15.88 <i>0.625</i>	
# SPLA073-018-09.53-ACE	7.264 (SIZE 18)	2.54 <i>0.100</i>	18	9.525 <i>0.375</i>	12.70 <i>0.500</i>	41.78 <i>1.645</i>	Acetal - Black	Plain - No Insert	15.88 <i>0.625</i>	

Indicates item not stocked at time of printing - Please enquire for lead time

E&OE Pricing and all details subject to change without notice - Copyright Miniature Bearings Australia Pty Ltd

MBA Size Listings are a guide to sizes only and must not be solely relied on for critical design information.

Sprockets - Ladder Chain

Part Number	Pitch (P) mm	Tooth Thickness (F.W.) mm	Teeth (No.)	Bore (d) mm	Overall Width (L) mm	Pitch Diameter mm	Material	Type	Hub Diameter mm	Locking Method
	<i>inches</i>	<i>inches</i>		<i>inches</i>	<i>inches</i>	<i>inches</i>			<i>inches</i>	
# SPLA073-018-04.78-ACB	7.264 (SIZE 18)	2.54 <i>0.100</i>	18	4.775 <i>0.188</i>	12.70 <i>0.500</i>	41.78 <i>1.645</i>	Acetal - Black	Brass Insert - Set Screw	15.88 <i>0.625</i>	
# SPLA073-018-06.35-ACB	7.264 (SIZE 18)	2.54 <i>0.100</i>	18	6.350 <i>0.250</i>	12.70 <i>0.500</i>	41.78 <i>1.645</i>	Acetal - Black	Brass Insert - Set Screw	15.88 <i>0.625</i>	
# SPLA073-018-06.35-ACE	7.264 (SIZE 18)	2.54 <i>0.100</i>	18	6.350 <i>0.250</i>	10.16 <i>0.400</i>	41.78 <i>1.645</i>	Acetal - Black	Plain - No Insert	12.70 <i>0.500</i>	
# SPLA073-020-06.35-ACB	7.264 (SIZE 18)	2.54 <i>0.100</i>	20	6.350 <i>0.250</i>	12.70 <i>0.500</i>	46.38 <i>1.826</i>	Acetal - Black	Brass Insert - Set Screw	15.88 <i>0.625</i>	
# SPLA073-020-04.78-ACB	7.264 (SIZE 18)	2.54 <i>0.100</i>	20	4.775 <i>0.188</i>	12.70 <i>0.500</i>	46.38 <i>1.826</i>	Acetal - Black	Brass Insert - Set Screw	15.88 <i>0.625</i>	
# SPLA073-020-09.53-ACE	7.264 (SIZE 18)	2.54 <i>0.100</i>	20	9.525 <i>0.375</i>	12.70 <i>0.500</i>	46.38 <i>1.826</i>	Acetal - Black	Plain - No Insert	15.88 <i>0.625</i>	
# SPLA073-020-06.35-ACE	7.264 (SIZE 18)	2.54 <i>0.100</i>	20	6.350 <i>0.250</i>	10.16 <i>0.400</i>	46.38 <i>1.826</i>	Acetal - Black	Plain - No Insert	12.70 <i>0.500</i>	
# SPLA073-022-06.35-ACB	7.264 (SIZE 18)	2.54 <i>0.100</i>	22	6.350 <i>0.250</i>	12.70 <i>0.500</i>	50.98 <i>2.007</i>	Acetal - Black	Brass Insert - Set Screw	15.88 <i>0.625</i>	

Indicates item not stocked at time of printing - Please enquire for lead time

E&OE Pricing and all details subject to change without notice - Copyright Miniature Bearings Australia Pty Ltd

MBA Size Listings are a guide to sizes only and must not be solely relied on for critical design information.

Sprockets - Ladder Chain

Part Number	Pitch (P) mm <i>inches</i>	Tooth Thickness (F.W.) mm <i>inches</i>	Teeth (No.)	Bore (d) mm <i>inches</i>	Overall Width (L) mm <i>inches</i>	Pitch Diameter mm <i>inches</i>	Material	Type	Hub Diameter mm <i>inches</i>	Locking Method
# SPLA073-022-04.78-ACB	7.264 (SIZE 18)	2.54 <i>0.100</i>	22	4.775 <i>0.188</i>	12.70 <i>0.500</i>	50.98 <i>2.007</i>	Acetal - Black	Brass Insert - Set Screw	15.88 <i>0.625</i>	
# SPLA073-022-09.53-ACE	7.264 (SIZE 18)	2.54 <i>0.100</i>	22	9.525 <i>0.375</i>	12.70 <i>0.500</i>	50.98 <i>2.007</i>	Acetal - Black	Plain - No Insert	15.88 <i>0.625</i>	
# SPLA073-022-06.35-ACE	7.264 (SIZE 18)	2.54 <i>0.100</i>	22	6.350 <i>0.250</i>	10.16 <i>0.400</i>	50.98 <i>2.007</i>	Acetal - Black	Plain - No Insert	12.70 <i>0.500</i>	
# SPLA073-024-04.78-ACB	7.264 (SIZE 18)	2.54 <i>0.100</i>	24	4.775 <i>0.188</i>	12.70 <i>0.500</i>	55.60 <i>2.189</i>	Acetal - Black	Brass Insert - Set Screw	15.88 <i>0.625</i>	
# SPLA073-024-09.53-ACE	7.264 (SIZE 18)	2.54 <i>0.100</i>	24	9.525 <i>0.375</i>	12.70 <i>0.500</i>	55.60 <i>2.189</i>	Acetal - Black	Plain - No Insert	15.88 <i>0.625</i>	
# SPLA073-024-07.95-ACB	7.264 (SIZE 18)	2.54 <i>0.100</i>	24	7.950 <i>0.313</i>	12.70 <i>0.500</i>	55.60 <i>2.189</i>	Acetal - Black	Brass Insert - Set Screw	19.05 <i>0.750</i>	
# SPLA073-024-06.35-ACE	7.264 (SIZE 18)	2.54 <i>0.100</i>	24	6.350 <i>0.250</i>	10.16 <i>0.400</i>	55.60 <i>2.189</i>	Acetal - Black	Plain - No Insert	12.70 <i>0.500</i>	
# SPLA073-024-06.35-ACB	7.264 (SIZE 18)	2.54 <i>0.100</i>	24	6.350 <i>0.250</i>	12.70 <i>0.500</i>	55.60 <i>2.189</i>	Acetal - Black	Brass Insert - Set Screw	15.88 <i>0.625</i>	

Indicates item not stocked at time of printing - Please enquire for lead time

E&OE Pricing and all details subject to change without notice - Copyright Miniature Bearings Australia Pty Ltd

MBA Size Listings are a guide to sizes only and must not be solely relied on for critical design information.

Sprockets - Ladder Chain

Part Number	Pitch (P) mm	Tooth Thickness (F.W.) mm	Teeth (No.)	Bore (d) mm	Overall Width (L) mm	Pitch Diameter mm	Material	Type	Hub Diameter mm	Locking Method
	<i>inches</i>	<i>inches</i>		<i>inches</i>	<i>inches</i>	<i>inches</i>			<i>inches</i>	
# SPLA073-024-12.70-ACE	7.264 (SIZE 18)	2.54 <i>0.100</i>	24	12.700 <i>0.500</i>	12.70 <i>0.500</i>	55.60 <i>2.189</i>	Acetal - Black	Plain - No Insert	19.05 <i>0.750</i>	
# SPLA073-025-12.70-ACE	7.264 (SIZE 18)	2.54 <i>0.100</i>	25	12.700 <i>0.500</i>	12.70 <i>0.500</i>	57.91 <i>2.280</i>	Acetal - Black	Plain - No Insert	19.05 <i>0.750</i>	
# SPLA073-025-09.53-ACE	7.264 (SIZE 18)	2.54 <i>0.100</i>	25	9.525 <i>0.375</i>	12.70 <i>0.500</i>	57.91 <i>2.280</i>	Acetal - Black	Plain - No Insert	15.88 <i>0.625</i>	
# SPLA073-025-07.95-ACB	7.264 (SIZE 18)	2.54 <i>0.100</i>	25	7.950 <i>0.313</i>	12.70 <i>0.500</i>	57.91 <i>2.280</i>	Acetal - Black	Brass Insert - Set Screw	19.05 <i>0.750</i>	
# SPLA073-025-06.35-ACE	7.264 (SIZE 18)	2.54 <i>0.100</i>	25	6.350 <i>0.250</i>	10.16 <i>0.400</i>	57.91 <i>2.280</i>	Acetal - Black	Plain - No Insert	12.70 <i>0.500</i>	
# SPLA073-025-06.35-ACB	7.264 (SIZE 18)	2.54 <i>0.100</i>	25	6.350 <i>0.250</i>	12.70 <i>0.500</i>	57.91 <i>2.280</i>	Acetal - Black	Brass Insert - Set Screw	15.88 <i>0.625</i>	
# SPLA073-025-04.78-ACB	7.264 (SIZE 18)	2.54 <i>0.100</i>	25	4.775 <i>0.188</i>	12.70 <i>0.500</i>	57.91 <i>2.280</i>	Acetal - Black	Brass Insert - Set Screw	15.88 <i>0.625</i>	
# SPLA073-030-07.95-ACB	7.264 (SIZE 18)	2.54 <i>0.100</i>	30	7.950 <i>0.313</i>	12.70 <i>0.500</i>	69.42 <i>2.733</i>	Acetal - Black	Brass Insert - Set Screw	19.05 <i>0.750</i>	

Indicates item not stocked at time of printing - Please enquire for lead time

E&OE Pricing and all details subject to change without notice - Copyright Miniature Bearings Australia Pty Ltd

MBA Size Listings are a guide to sizes only and must not be solely relied on for critical design information.

Sprockets - Ladder Chain

Part Number	Pitch (P) mm	Tooth Thickness (F.W.) mm	Teeth (No.)	Bore (d) mm	Overall Width (L) mm	Pitch Diameter mm	Material	Type	Hub Diameter mm	Locking Method
	<i>inches</i>	<i>inches</i>		<i>inches</i>	<i>inches</i>	<i>inches</i>			<i>inches</i>	
# SPLA073-030-12.70-ACE	7.264 (SIZE 18)	2.54 <i>0.100</i>	30	12.700 <i>0.500</i>	12.70 <i>0.500</i>	69.42 <i>2.733</i>	Acetal - Black	Plain - No Insert	19.05 <i>0.750</i>	
# SPLA073-030-06.35-ACE	7.264 (SIZE 18)	2.54 <i>0.100</i>	30	6.350 <i>0.250</i>	10.16 <i>0.400</i>	69.42 <i>2.733</i>	Acetal - Black	Plain - No Insert	12.70 <i>0.500</i>	
# SPLA073-030-06.35-ACB	7.264 (SIZE 18)	2.54 <i>0.100</i>	30	6.350 <i>0.250</i>	12.70 <i>0.500</i>	69.42 <i>2.733</i>	Acetal - Black	Brass Insert - Set Screw	15.88 <i>0.625</i>	
# SPLA073-030-09.53-ACE	7.264 (SIZE 18)	2.54 <i>0.100</i>	30	9.525 <i>0.375</i>	12.70 <i>0.500</i>	69.42 <i>2.733</i>	Acetal - Black	Plain - No Insert	15.88 <i>0.625</i>	
# SPLA073-030-04.78-ACB	7.264 (SIZE 18)	2.54 <i>0.100</i>	30	4.775 <i>0.188</i>	12.70 <i>0.500</i>	69.42 <i>2.733</i>	Acetal - Black	Brass Insert - Set Screw	15.88 <i>0.625</i>	
# SPLA073-032-06.35-ACB	7.264 (SIZE 18)	2.54 <i>0.100</i>	32	6.350 <i>0.250</i>	12.70 <i>0.500</i>	74.04 <i>2.915</i>	Acetal - Black	Brass Insert - Set Screw	15.88 <i>0.625</i>	
# SPLA073-032-12.70-ACE	7.264 (SIZE 18)	2.54 <i>0.100</i>	32	12.700 <i>0.500</i>	12.70 <i>0.500</i>	74.04 <i>2.915</i>	Acetal - Black	Plain - No Insert	19.05 <i>0.750</i>	
# SPLA073-032-09.53-ACE	7.264 (SIZE 18)	2.54 <i>0.100</i>	32	9.525 <i>0.375</i>	12.70 <i>0.500</i>	74.04 <i>2.915</i>	Acetal - Black	Plain - No Insert	15.88 <i>0.625</i>	

Indicates item not stocked at time of printing - Please enquire for lead time

E&OE Pricing and all details subject to change without notice - Copyright Miniature Bearings Australia Pty Ltd

MBA Size Listings are a guide to sizes only and must not be solely relied on for critical design information.

Sprockets - Ladder Chain

Part Number	Pitch (P) mm <i>inches</i>	Tooth Thickness (F.W.) mm <i>inches</i>	Teeth (No.)	Bore (d) mm <i>inches</i>	Overall Width (L) mm <i>inches</i>	Pitch Diameter mm <i>inches</i>	Material	Type	Hub Diameter mm <i>inches</i>	Locking Method
# SPLA073-032-07.95-ACB	7.264 (SIZE 18)	2.54 <i>0.100</i>	32	7.950 <i>0.313</i>	12.70 <i>0.500</i>	74.04 <i>2.915</i>	Acetal - Black	Brass Insert - Set Screw	19.05 <i>0.750</i>	
# SPLA073-036-12.70-ACE	7.264 (SIZE 18)	2.54 <i>0.100</i>	36	12.700 <i>0.500</i>	12.70 <i>0.500</i>	83.26 <i>3.278</i>	Acetal - Black	Plain - No Insert	19.05 <i>0.750</i>	
# SPLA073-036-06.35-ACB	7.264 (SIZE 18)	2.54 <i>0.100</i>	36	6.350 <i>0.250</i>	12.70 <i>0.500</i>	83.26 <i>3.278</i>	Acetal - Black	Brass Insert - Set Screw	15.88 <i>0.625</i>	
# SPLA073-036-09.53-ACE	7.264 (SIZE 18)	2.54 <i>0.100</i>	36	9.525 <i>0.375</i>	12.70 <i>0.500</i>	83.26 <i>3.278</i>	Acetal - Black	Plain - No Insert	15.88 <i>0.625</i>	
# SPLA073-036-07.95-ACB	7.264 (SIZE 18)	2.54 <i>0.100</i>	36	7.950 <i>0.313</i>	12.70 <i>0.500</i>	83.26 <i>3.278</i>	Acetal - Black	Brass Insert - Set Screw	19.05 <i>0.750</i>	
# SPLA073-040-07.95-ACB	7.264 (SIZE 18)	2.54 <i>0.100</i>	40	7.950 <i>0.313</i>	12.70 <i>0.500</i>	92.48 <i>3.641</i>	Acetal - Black	Brass Insert - Set Screw	19.05 <i>0.750</i>	
# SPLA073-040-12.70-ACE	7.264 (SIZE 18)	2.54 <i>0.100</i>	40	12.700 <i>0.500</i>	12.70 <i>0.500</i>	92.48 <i>3.641</i>	Acetal - Black	Plain - No Insert	19.05 <i>0.750</i>	
# SPLA073-048-07.95-ACB	7.264 (SIZE 18)	2.54 <i>0.100</i>	48	7.950 <i>0.313</i>	12.70 <i>0.500</i>	110.97 <i>4.369</i>	Acetal - Black	Brass Insert - Set Screw	19.05 <i>0.750</i>	

Indicates item not stocked at time of printing - Please enquire for lead time

E&OE Pricing and all details subject to change without notice - Copyright Miniature Bearings Australia Pty Ltd

MBA Size Listings are a guide to sizes only and must not be solely relied on for critical design information.

Sprockets - Ladder Chain

Part Number	Pitch (P) mm	Tooth Thickness (F.W.) mm	Teeth (No.)	Bore (d) mm	Overall Width (L) mm	Pitch Diameter mm	Material	Type	Hub Diameter mm	Locking Method
	<i>inches</i>	<i>inches</i>		<i>inches</i>	<i>inches</i>	<i>inches</i>			<i>inches</i>	
# SPLA073-048-12.70-ACE	7.264 (SIZE 18)	2.54	48	12.700	12.70	110.97	Acetal - Black	Plain - No Insert	19.05	
		<i>0.100</i>		<i>0.500</i>	<i>0.500</i>	<i>4.369</i>			<i>0.750</i>	
# SPLA073-054-07.95-ACB	7.264 (SIZE 18)	2.54	54	7.950	12.70	124.82	Acetal - Black	Brass Insert - Set Screw	19.05	
		<i>0.100</i>		<i>0.313</i>	<i>0.500</i>	<i>4.914</i>			<i>0.750</i>	
# SPLA073-054-12.70-ACE	7.264 (SIZE 18)	2.54	54	12.700	12.70	124.82	Acetal - Black	Plain - No Insert	19.05	
		<i>0.100</i>		<i>0.500</i>	<i>0.500</i>	<i>4.914</i>			<i>0.750</i>	
# SPLA073-006-06.35-CS	7.264 (SIZE 18)	3.05	6	6.350	15.88	14.48	Carbon Steel	Plain - No Insert	12.70	
		<i>0.120</i>		<i>0.250</i>	<i>0.625</i>	<i>0.570</i>			<i>0.500</i>	
# SPLA073-006-04.78-BRZ	7.264 (SIZE 18)	3.05	6	4.775	9.53	14.48	Bronze	Plain - No Insert	9.53	
		<i>0.120</i>		<i>0.188</i>	<i>0.375</i>	<i>0.570</i>			<i>0.375</i>	
# SPLA073-007-06.35-CS	7.264 (SIZE 18)	3.05	7	6.350	15.88	17.02	Carbon Steel	Plain - No Insert	14.30	
		<i>0.120</i>		<i>0.250</i>	<i>0.625</i>	<i>0.670</i>			<i>0.563</i>	
# SPLA073-007-04.78-BRZ	7.264 (SIZE 18)	3.05	7	4.775	9.53	17.02	Bronze	Plain - No Insert	9.53	
		<i>0.120</i>		<i>0.188</i>	<i>0.375</i>	<i>0.670</i>			<i>0.375</i>	
# SPLA073-008-04.78-BRZ	7.264 (SIZE 18)	3.05	8	4.775	9.53	19.05	Bronze	Plain - No Insert	11.13	
		<i>0.120</i>		<i>0.188</i>	<i>0.375</i>	<i>0.750</i>			<i>0.438</i>	

Indicates item not stocked at time of printing - Please enquire for lead time

E&OE Pricing and all details subject to change without notice - Copyright Miniature Bearings Australia Pty Ltd

MBA Size Listings are a guide to sizes only and must not be solely relied on for critical design information.

Sprockets - Ladder Chain

Part Number	Pitch (P) mm	Tooth Thickness (F.W.) mm	Teeth (No.)	Bore (d) mm	Overall Width (L) mm	Pitch Diameter mm	Material	Type	Hub Diameter mm	Locking Method
	<i>inches</i>	<i>inches</i>		<i>inches</i>	<i>inches</i>	<i>inches</i>			<i>inches</i>	
# SPLA073-008-07.95-CS	7.264 (SIZE 18)	3.05 <i>0.120</i>	8	7.950 <i>0.313</i>	15.88 <i>0.625</i>	19.05 <i>0.750</i>	Carbon Steel	Plain - No Insert	17.48 <i>0.688</i>	
# SPLA073-009-07.95-CS	7.264 (SIZE 18)	3.05 <i>0.120</i>	9	7.950 <i>0.313</i>	15.88 <i>0.625</i>	21.08 <i>0.830</i>	Carbon Steel	Plain - No Insert	19.05 <i>0.750</i>	
# SPLA073-009-04.78-BRZ	7.264 (SIZE 18)	3.05 <i>0.120</i>	9	4.775 <i>0.188</i>	9.53 <i>0.375</i>	21.08 <i>0.830</i>	Bronze	Plain - No Insert	11.13 <i>0.438</i>	
# SPLA073-010-07.95-CS	7.264 (SIZE 18)	3.05 <i>0.120</i>	10	7.950 <i>0.313</i>	15.88 <i>0.625</i>	23.37 <i>0.920</i>	Carbon Steel	Plain - No Insert	22.23 <i>0.875</i>	
# SPLA073-010-04.78-BRZ	7.264 (SIZE 18)	3.05 <i>0.120</i>	10	4.775 <i>0.188</i>	9.53 <i>0.375</i>	23.37 <i>0.920</i>	Bronze	Plain - No Insert	12.70 <i>0.500</i>	
# SPLA073-011-04.78-BRZ	7.264 (SIZE 18)	3.05 <i>0.120</i>	11	4.775 <i>0.188</i>	9.53 <i>0.375</i>	25.91 <i>1.020</i>	Bronze	Plain - No Insert	12.70 <i>0.500</i>	
# SPLA073-012-04.78-BRZ	7.264 (SIZE 18)	3.05 <i>0.120</i>	12	4.775 <i>0.188</i>	9.53 <i>0.375</i>	27.94 <i>1.100</i>	Bronze	Plain - No Insert	12.70 <i>0.500</i>	
# SPLA073-012-07.95-CS	7.264 (SIZE 18)	3.05 <i>0.120</i>	12	7.950 <i>0.313</i>	15.88 <i>0.625</i>	27.94 <i>1.100</i>	Carbon Steel	Plain - No Insert	22.23 <i>0.875</i>	

Indicates item not stocked at time of printing - Please enquire for lead time

E&OE Pricing and all details subject to change without notice - Copyright Miniature Bearings Australia Pty Ltd

MBA Size Listings are a guide to sizes only and must not be solely relied on for critical design information.

Sprockets - Ladder Chain

Part Number	Pitch (P) mm	Tooth Thickness (F.W.) mm	Teeth (No.)	Bore (d) mm	Overall Width (L) mm	Pitch Diameter mm	Material	Type	Hub Diameter mm	Locking Method
	<i>inches</i>	<i>inches</i>		<i>inches</i>	<i>inches</i>	<i>inches</i>			<i>inches</i>	
# SPLA073-014-06.35-BRZ	7.264 (SIZE 18)	3.05 <i>0.120</i>	14	6.350 <i>0.250</i>	11.13 <i>0.438</i>	32.51 <i>1.280</i>	Bronze	Plain - No Insert	15.88 <i>0.625</i>	
# SPLA073-014-07.95-CS	7.264 (SIZE 18)	3.05 <i>0.120</i>	14	7.950 <i>0.313</i>	15.88 <i>0.625</i>	32.51 <i>1.280</i>	Carbon Steel	Plain - No Insert	22.23 <i>0.875</i>	
# SPLA073-016-07.95-CS	7.264 (SIZE 18)	3.05 <i>0.120</i>	16	7.950 <i>0.313</i>	15.88 <i>0.625</i>	37.34 <i>1.470</i>	Carbon Steel	Plain - No Insert	22.23 <i>0.875</i>	
# SPLA073-016-06.35-BRZ	7.264 (SIZE 18)	3.05 <i>0.120</i>	16	6.350 <i>0.250</i>	11.13 <i>0.438</i>	37.34 <i>1.470</i>	Bronze	Plain - No Insert	15.88 <i>0.625</i>	
# SPLA073-018-06.35-BRZ	7.264 (SIZE 18)	3.05 <i>0.120</i>	18	6.350 <i>0.250</i>	11.13 <i>0.438</i>	41.66 <i>1.640</i>	Bronze	Plain - No Insert	15.88 <i>0.625</i>	
# SPLA073-020-06.35-BRZ	7.264 (SIZE 18)	3.05 <i>0.120</i>	20	6.350 <i>0.250</i>	11.13 <i>0.438</i>	46.23 <i>1.820</i>	Bronze	Plain - No Insert	15.88 <i>0.625</i>	
# SPLA073-021-07.95-BRZ	7.264 (SIZE 18)	3.05 <i>0.120</i>	21	7.950 <i>0.313</i>	12.70 <i>0.500</i>	48.77 <i>1.920</i>	Bronze	Plain - No Insert	19.05 <i>0.750</i>	
# SPLA073-024-07.95-BRZ	7.264 (SIZE 18)	3.05 <i>0.120</i>	24	7.950 <i>0.313</i>	12.70 <i>0.500</i>	55.37 <i>2.180</i>	Bronze	Plain - No Insert	19.05 <i>0.750</i>	

Indicates item not stocked at time of printing - Please enquire for lead time

E&OE Pricing and all details subject to change without notice - Copyright Miniature Bearings Australia Pty Ltd

MBA Size Listings are a guide to sizes only and must not be solely relied on for critical design information.

Sprockets - Ladder Chain

Part Number	Pitch (P) mm <i>inches</i>	Tooth Thickness (F.W.) mm <i>inches</i>	Teeth (No.)	Bore (d) mm <i>inches</i>	Overall Width (L) mm <i>inches</i>	Pitch Diameter mm <i>inches</i>	Material	Type	Hub Diameter mm <i>inches</i>	Locking Method
# SPLA073-027-07.95-BRZ	7.264 (SIZE 18)	3.05 <i>0.120</i>	27	7.950 <i>0.313</i>	12.70 <i>0.500</i>	62.74 <i>2.470</i>	Bronze	Plain - No Insert	19.05 <i>0.750</i>	
# SPLA073-032-07.95-BRZ	7.264 (SIZE 18)	3.05 <i>0.120</i>	32	7.950 <i>0.313</i>	12.70 <i>0.500</i>	74.17 <i>2.920</i>	Bronze	Plain - No Insert	19.05 <i>0.750</i>	
# SPLA073-044-09.53-BRZ	7.264 (SIZE 18)	3.05 <i>0.120</i>	44	9.525 <i>0.375</i>	12.70 <i>0.500</i>	101.60 <i>4.000</i>	Bronze	Plain - No Insert	19.05 <i>0.750</i>	
# SPLA073-048-09.53-BRZ	7.264 (SIZE 18)	3.05 <i>0.120</i>	48	9.525 <i>0.375</i>	12.70 <i>0.500</i>	110.74 <i>4.360</i>	Bronze	Plain - No Insert	19.05 <i>0.750</i>	
# SPLA090-005-04.78-BR	8.966 (SIZE 17)	4.32 <i>0.170</i>	5	4.775 <i>0.188</i>	11.13 <i>0.438</i>	14.99 <i>0.590</i>	Brass	Plain - No Insert	7.95 <i>0.313</i>	
# SPLA090-006-04.78-BR	8.966 (SIZE 17)	4.32 <i>0.170</i>	6	4.775 <i>0.188</i>	11.13 <i>0.438</i>	17.78 <i>0.700</i>	Brass	Plain - No Insert	11.13 <i>0.438</i>	
# SPLA090-007-04.78-BR	8.966 (SIZE 17)	4.32 <i>0.170</i>	7	4.775 <i>0.188</i>	11.13 <i>0.438</i>	20.32 <i>0.800</i>	Brass	Plain - No Insert	12.70 <i>0.500</i>	
# SPLA090-008-04.78-BR	8.966 (SIZE 17)	4.32 <i>0.170</i>	8	4.775 <i>0.188</i>	11.13 <i>0.438</i>	23.11 <i>0.910</i>	Brass	Plain - No Insert	12.70 <i>0.500</i>	

Indicates item not stocked at time of printing - Please enquire for lead time

E&OE Pricing and all details subject to change without notice - Copyright Miniature Bearings Australia Pty Ltd

MBA Size Listings are a guide to sizes only and must not be solely relied on for critical design information.

Sprockets - Ladder Chain

Part Number	Pitch (P) mm <i>inches</i>	Tooth Thickness (F.W.) mm <i>inches</i>	Teeth (No.)	Bore (d) mm <i>inches</i>	Overall Width (L) mm <i>inches</i>	Pitch Diameter mm <i>inches</i>	Material	Type	Hub Diameter mm <i>inches</i>	Locking Method
# SPLA090-008-09.53-CS	8.966 (SIZE 14)	4.32 <i>0.170</i>	8	9.525 <i>0.375</i>	20.65 <i>0.813</i>	23.37 <i>0.920</i>	Carbon Steel	Plain - No Insert	22.23 <i>0.875</i>	
# SPLA090-009-04.78-BR	8.966 (SIZE 17)	4.32 <i>0.170</i>	9	4.775 <i>0.188</i>	12.70 <i>0.500</i>	25.91 <i>1.020</i>	Brass	Plain - No Insert	14.30 <i>0.563</i>	
# SPLA090-009-09.53-CS	8.966 (SIZE 14)	4.32 <i>0.170</i>	9	9.525 <i>0.375</i>	20.65 <i>0.813</i>	26.16 <i>1.030</i>	Carbon Steel	Plain - No Insert	28.58 <i>1.125</i>	
# SPLA090-010-04.78-BR	8.966 (SIZE 17)	4.32 <i>0.170</i>	10	4.775 <i>0.188</i>	12.70 <i>0.500</i>	28.70 <i>1.130</i>	Brass	Plain - No Insert	14.30 <i>0.563</i>	
# SPLA090-011-12.70-CS	8.966 (SIZE 14)	4.32 <i>0.170</i>	11	12.700 <i>0.500</i>	20.65 <i>0.813</i>	31.75 <i>1.250</i>	Carbon Steel	Plain - No Insert	30.18 <i>1.188</i>	
# SPLA090-012-06.35-BR	8.966 (SIZE 17)	4.32 <i>0.170</i>	12	6.350 <i>0.250</i>	12.70 <i>0.500</i>	34.29 <i>1.350</i>	Brass	Plain - No Insert	15.88 <i>0.625</i>	
# SPLA090-012-12.70-CS	8.966 (SIZE 14)	4.32 <i>0.170</i>	12	12.700 <i>0.500</i>	20.65 <i>0.813</i>	34.54 <i>1.360</i>	Carbon Steel	Plain - No Insert	30.18 <i>1.188</i>	
# SPLA090-014-12.70-CS	8.966 (SIZE 14)	4.32 <i>0.170</i>	14	12.700 <i>0.500</i>	20.65 <i>0.813</i>	40.39 <i>1.590</i>	Carbon Steel	Plain - No Insert	38.10 <i>1.500</i>	

Indicates item not stocked at time of printing - Please enquire for lead time

E&OE Pricing and all details subject to change without notice - Copyright Miniature Bearings Australia Pty Ltd

MBA Size Listings are a guide to sizes only and must not be solely relied on for critical design information.

Sprockets - Ladder Chain

Part Number	Pitch (P) mm	Tooth Thickness (F.W.) mm	Teeth (No.)	Bore (d) mm	Overall Width (L) mm	Pitch Diameter mm	Material	Type	Hub Diameter mm	Locking Method
	<i>inches</i>	<i>inches</i>		<i>inches</i>	<i>inches</i>	<i>inches</i>			<i>inches</i>	
# SPLA090-016-06.35-BR	8.966 (SIZE 17)	4.32 <i>0.170</i>	16	6.350 <i>0.250</i>	12.70 <i>0.500</i>	45.21 <i>1.780</i>	Brass	Plain - No Insert	15.88 <i>0.625</i>	
# SPLA090-020-07.95-BR	8.966 (SIZE 17)	4.32 <i>0.170</i>	20	7.950 <i>0.313</i>	14.30 <i>0.563</i>	56.39 <i>2.220</i>	Brass	Plain - No Insert	19.05 <i>0.750</i>	
# SPLA090-022-07.95-BR	8.966 (SIZE 17)	4.32 <i>0.170</i>	22	7.950 <i>0.313</i>	14.30 <i>0.563</i>	62.23 <i>2.450</i>	Brass	Plain - No Insert	19.05 <i>0.750</i>	
# SPLA090-024-07.95-BR	8.966 (SIZE 17)	4.32 <i>0.170</i>	24	7.950 <i>0.313</i>	14.30 <i>0.563</i>	67.56 <i>2.660</i>	Brass	Plain - No Insert	19.05 <i>0.750</i>	
# SPLA090-027-07.95-BR	8.966 (SIZE 17)	4.32 <i>0.170</i>	27	7.950 <i>0.313</i>	14.30 <i>0.563</i>	76.20 <i>3.000</i>	Brass	Plain - No Insert	19.05 <i>0.750</i>	
# SPLA090-034-12.70-CS	8.966 (SIZE 14)	4.32 <i>0.170</i>	34	12.700 <i>0.500</i>	20.65 <i>0.813</i>	97.28 <i>3.830</i>	Carbon Steel	Plain - No Insert	38.10 <i>1.500</i>	
# SPLA090-036-09.53-BR	8.966 (SIZE 17)	4.32 <i>0.170</i>	36	9.525 <i>0.375</i>	15.88 <i>0.625</i>	101.35 <i>3.990</i>	Brass	Plain - No Insert	22.23 <i>0.875</i>	
# SPLA090-036-12.70-CS	8.966 (SIZE 14)	4.32 <i>0.170</i>	36	12.700 <i>0.500</i>	20.65 <i>0.813</i>	102.87 <i>4.050</i>	Carbon Steel	Plain - No Insert	38.10 <i>1.500</i>	

Indicates item not stocked at time of printing - Please enquire for lead time

E&OE Pricing and all details subject to change without notice - Copyright Miniature Bearings Australia Pty Ltd

MBA Size Listings are a guide to sizes only and must not be solely relied on for critical design information.

Sprockets - Ladder Chain

Part Number	Pitch (P) mm <i>inches</i>	Tooth Thickness (F.W.) mm <i>inches</i>	Teeth (No.)	Bore (d) mm <i>inches</i>	Overall Width (L) mm <i>inches</i>	Pitch Diameter mm <i>inches</i>	Material	Type	Hub Diameter mm <i>inches</i>	Locking Method
# SPLA090-038-12.70-CS	8.966 (SIZE 14)	4.32 <i>0.170</i>	38	12.700 <i>0.500</i>	20.65 <i>0.813</i>	108.46 <i>4.270</i>	Carbon Steel	Plain - No Insert	38.10 <i>1.500</i>	
# SPLA090-042-12.70-CS	8.966 (SIZE 14)	4.32 <i>0.170</i>	42	12.700 <i>0.500</i>	20.65 <i>0.813</i>	119.89 <i>4.720</i>	Carbon Steel	Plain - No Insert	38.10 <i>1.500</i>	
# SPLA090-044-12.70-CS	8.966 (SIZE 14)	4.32 <i>0.170</i>	44	12.700 <i>0.500</i>	20.65 <i>0.813</i>	125.73 <i>4.950</i>	Carbon Steel	Plain - No Insert	38.10 <i>1.500</i>	
# SPLA090-045-09.53-BR	8.966 (SIZE 17)	4.32 <i>0.170</i>	45	9.525 <i>0.375</i>	15.88 <i>0.625</i>	126.75 <i>4.990</i>	Brass	Plain - No Insert	22.23 <i>0.875</i>	
# SPLA090-048-12.70-CS	8.966 (SIZE 14)	4.32 <i>0.170</i>	48	12.700 <i>0.500</i>	20.65 <i>0.813</i>	137.16 <i>5.400</i>	Carbon Steel	Plain - No Insert	44.45 <i>1.750</i>	
# SPLA090-054-09.53-BR	8.966 (SIZE 17)	4.32 <i>0.170</i>	54	9.525 <i>0.375</i>	15.88 <i>0.625</i>	152.15 <i>5.990</i>	Brass	Plain - No Insert	22.23 <i>0.875</i>	
# SPLA090-054-12.70-CS	8.966 (SIZE 14)	4.32 <i>0.170</i>	54	12.700 <i>0.500</i>	20.65 <i>0.813</i>	154.18 <i>6.070</i>	Carbon Steel	Plain - No Insert	44.45 <i>1.750</i>	
# SPLA090-072-12.70-CS	8.966 (SIZE 14)	4.32 <i>0.170</i>	72	12.700 <i>0.500</i>	20.65 <i>0.813</i>	205.49 <i>8.090</i>	Carbon Steel	Plain - No Insert	44.45 <i>1.750</i>	

Indicates item not stocked at time of printing - Please enquire for lead time

E&OE Pricing and all details subject to change without notice - Copyright Miniature Bearings Australia Pty Ltd

MBA Size Listings are a guide to sizes only and must not be solely relied on for critical design information.

Sprockets - Ladder Chain

Part Number	Pitch (P) mm	Tooth Thickness (F.W.) mm	Teeth (No.)	Bore (d) mm	Overall Width (L) mm	Pitch Diameter mm	Material	Type	Hub Diameter mm	Locking Method
	<i>inches</i>	<i>inches</i>		<i>inches</i>	<i>inches</i>	<i>inches</i>			<i>inches</i>	
# SPLA090-080-12.70-CS	8.966 (SIZE 14)	4.32	80	12.700	20.65	228.35	Carbon Steel	Plain - No Insert	44.45	
		<i>0.170</i>		<i>0.500</i>	<i>0.813</i>	<i>8.990</i>			<i>1.750</i>	
# SPLA090-088-12.70-CS	8.966 (SIZE 14)	4.32	88	12.700	20.65	251.21	Carbon Steel	Plain - No Insert	44.45	
		<i>0.170</i>		<i>0.500</i>	<i>0.813</i>	<i>9.890</i>			<i>1.750</i>	

Indicates item not stocked at time of printing - Please enquire for lead time

E&OE Pricing and all details subject to change without notice - Copyright Miniature Bearings Australia Pty Ltd

MBA Size Listings are a guide to sizes only and must not be solely relied on for critical design information.



DISTRIBUTED BY

Ask us to put your name and address here

<http://www.minibearings.com.au/product>

Ph +61 7 3245 7977

Fax +61 7 3245 1017

Catalogue requests to catalogues@minibearings.com.au

