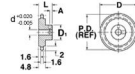




MBA

Sprockets - Posi-Drive - 4.00 mm Circular Pitch



Same as US 20 Pitch - Use with Double Core Belts.

Use with Double Core Posi-Drive Belts.

3.990mm Circular Pitch. Same as US 20 Pitch.

Sprockets - Posi-Drive - 4.00 mm Circular Pitch

Part Number	Teeth No.	Bore mm	Outside Diameter mm	Pitch Diameter mm	Face Width mm	Overall Length mm	Hub Diameter mm	Hub Configuration	Suit Belt Type	Material
		<i>inches</i>	<i>inches</i>	<i>inches</i>	<i>inches</i>	<i>inches</i>	<i>inches</i>			
# PDS040-010-03.17-AL-P	10	3.175	14.275	12.700	4.750	9.525	7.925	Pin Hub	Twin Core	2024-T4 Aluminium
		<i>0.125</i>	<i>0.562</i>	<i>0.500</i>	<i>0.187</i>	<i>0.375</i>	<i>0.312</i>			
# PDS040-010-03.17-303-P	10	3.175	14.275	12.700	4.750	9.525	7.925	Pin Hub	Twin Core	303 Stainless Steel
		<i>0.125</i>	<i>0.562</i>	<i>0.500</i>	<i>0.187</i>	<i>0.375</i>	<i>0.312</i>			
# PDS040-010-04.00-303-P	10	4.000	14.300	12.700	4.800	10.300	9.500	Pin Hub	Twin Core	303 Stainless Steel
		<i>0.157</i>	<i>0.563</i>	<i>0.500</i>	<i>0.189</i>	<i>0.406</i>	<i>0.374</i>			

Indicates item not stocked at time of printing - Please enquire for lead time

E&OE Pricing and all details subject to change without notice - Copyright Miniature Bearings Australia Pty Ltd

MBA Size Listings are a guide to sizes only and must not be solely relied on for critical design information.

Sprockets - Posi-Drive - 4.00 mm Circular Pitch

Part Number	Teeth No.	Bore mm	Outside Diameter mm	Pitch Diameter mm	Face Width mm	Overall Length mm	Hub Diameter mm	Hub Configuration	Suit Belt Type	Material
		<i>inches</i>	<i>inches</i>	<i>inches</i>	<i>inches</i>	<i>inches</i>	<i>inches</i>			
# PDS040-010-04.00-AL-P	10	4.000	14.300	12.700	4.800	10.300	9.500	Pin Hub	Twin Core	2024-T4 Aluminium
		<i>0.157</i>	<i>0.563</i>	<i>0.500</i>	<i>0.189</i>	<i>0.406</i>	<i>0.374</i>			
# PDS040-010-04.76-303-P	10	4.762	14.275	12.700	4.750	10.312	9.525	Pin Hub	Twin Core	303 Stainless Steel
		<i>0.187</i>	<i>0.562</i>	<i>0.500</i>	<i>0.187</i>	<i>0.406</i>	<i>0.375</i>			
# PDS040-010-04.76-AL-P	10	4.762	14.275	12.700	4.750	10.312	9.525	Pin Hub	Twin Core	2024-T4 Aluminium
		<i>0.187</i>	<i>0.562</i>	<i>0.500</i>	<i>0.187</i>	<i>0.406</i>	<i>0.375</i>			
# PDS040-011-03.17-AL-P	11	3.175	15.545	13.970	4.750	9.525	7.925	Pin Hub	Twin Core	2024-T4 Aluminium
		<i>0.125</i>	<i>0.612</i>	<i>0.550</i>	<i>0.187</i>	<i>0.375</i>	<i>0.312</i>			
# PDS040-011-03.17-303-P	11	3.175	15.545	13.970	4.750	9.525	7.925	Pin Hub	Twin Core	303 Stainless Steel
		<i>0.125</i>	<i>0.612</i>	<i>0.550</i>	<i>0.187</i>	<i>0.375</i>	<i>0.312</i>			
# PDS040-011-04.00-303-P	11	4.000	15.500	14.000	4.800	10.300	9.500	Pin Hub	Twin Core	303 Stainless Steel
		<i>0.157</i>	<i>0.610</i>	<i>0.551</i>	<i>0.189</i>	<i>0.406</i>	<i>0.374</i>			
# PDS040-011-04.00-AL-P	11	4.000	15.500	14.000	4.800	10.300	9.500	Pin Hub	Twin Core	2024-T4 Aluminium
		<i>0.157</i>	<i>0.610</i>	<i>0.551</i>	<i>0.189</i>	<i>0.406</i>	<i>0.374</i>			
# PDS040-011-04.76-303-P	11	4.762	15.545	13.970	4.750	10.312	9.525	Pin Hub	Twin Core	303 Stainless Steel
		<i>0.187</i>	<i>0.612</i>	<i>0.550</i>	<i>0.187</i>	<i>0.406</i>	<i>0.375</i>			

Indicates item not stocked at time of printing - Please enquire for lead time

E&OE Pricing and all details subject to change without notice - Copyright Miniature Bearings Australia Pty Ltd

MBA Size Listings are a guide to sizes only and must not be solely relied on for critical design information.

Sprockets - Posi-Drive - 4.00 mm Circular Pitch

Part Number	Teeth No.	Bore mm	Outside Diameter mm	Pitch Diameter mm	Face Width mm	Overall Length mm	Hub Diameter mm	Hub Configuration	Suit Belt Type	Material
		<i>inches</i>	<i>inches</i>	<i>inches</i>	<i>inches</i>	<i>inches</i>	<i>inches</i>			
# PDS040-011-04.76-AL-P	11	4.762	15.545	13.970	4.750	10.312	9.525	Pin Hub	Twin Core	2024-T4 Aluminium
		<i>0.187</i>	<i>0.612</i>	<i>0.550</i>	<i>0.187</i>	<i>0.406</i>	<i>0.375</i>			
# PDS040-012-03.17-303-P	12	3.175	16.815	15.240	4.750	9.525	7.925	Pin Hub	Twin Core	303 Stainless Steel
		<i>0.125</i>	<i>0.662</i>	<i>0.600</i>	<i>0.187</i>	<i>0.375</i>	<i>0.312</i>			
# PDS040-012-03.17-AL-P	12	3.175	16.815	15.240	4.750	9.525	7.925	Pin Hub	Twin Core	2024-T4 Aluminium
		<i>0.125</i>	<i>0.662</i>	<i>0.600</i>	<i>0.187</i>	<i>0.375</i>	<i>0.312</i>			
# PDS040-012-04.00-303-P	12	4.000	16.800	15.200	4.800	10.300	9.500	Pin Hub	Twin Core	303 Stainless Steel
		<i>0.157</i>	<i>0.661</i>	<i>0.598</i>	<i>0.189</i>	<i>0.406</i>	<i>0.374</i>			
# PDS040-012-04.00-AL-P	12	4.000	16.800	15.200	4.800	10.300	9.500	Pin Hub	Twin Core	2024-T4 Aluminium
		<i>0.157</i>	<i>0.661</i>	<i>0.598</i>	<i>0.189</i>	<i>0.406</i>	<i>0.374</i>			
# PDS040-012-04.76-303-P	12	4.762	16.815	15.240	4.750	10.312	9.525	Pin Hub	Twin Core	303 Stainless Steel
		<i>0.187</i>	<i>0.662</i>	<i>0.600</i>	<i>0.187</i>	<i>0.406</i>	<i>0.375</i>			
# PDS040-012-04.76-AL-P	12	4.762	16.815	15.240	4.750	10.312	9.525	Pin Hub	Twin Core	2024-T4 Aluminium
		<i>0.187</i>	<i>0.662</i>	<i>0.600</i>	<i>0.187</i>	<i>0.406</i>	<i>0.375</i>			
# PDS040-012-06.00-303-P	12	6.000	16.800	15.200	4.800	11.000	12.700	Pin Hub	Twin Core	303 Stainless Steel
		<i>0.236</i>	<i>0.661</i>	<i>0.598</i>	<i>0.189</i>	<i>0.433</i>	<i>0.500</i>			

Indicates item not stocked at time of printing - Please enquire for lead time

E&OE Pricing and all details subject to change without notice - Copyright Miniature Bearings Australia Pty Ltd

MBA Size Listings are a guide to sizes only and must not be solely relied on for critical design information.

Sprockets - Posi-Drive - 4.00 mm Circular Pitch

Part Number	Teeth No.	Bore mm	Outside Diameter mm	Pitch Diameter mm	Face Width mm	Overall Length mm	Hub Diameter mm	Hub Configuration	Suit Belt Type	Material
		<i>inches</i>	<i>inches</i>	<i>inches</i>	<i>inches</i>	<i>inches</i>	<i>inches</i>			
# PDS040-012-06.00-AL-P	12	6.000	16.800	15.200	4.800	11.000	12.700	Pin Hub	Twin Core	2024-T4 Aluminium
		<i>0.236</i>	<i>0.661</i>	<i>0.598</i>	<i>0.189</i>	<i>0.433</i>	<i>0.500</i>			
# PDS040-012-06.35-303-P	12	6.350	16.815	15.240	4.750	11.100	12.700	Pin Hub	Twin Core	303 Stainless Steel
		<i>0.250</i>	<i>0.662</i>	<i>0.600</i>	<i>0.187</i>	<i>0.437</i>	<i>0.500</i>			
# PDS040-012-06.35-303-S	12	6.350	16.815	15.240	4.750	11.887	7.925	Split Hub	Twin Core	303 Stainless Steel
		<i>0.250</i>	<i>0.662</i>	<i>0.600</i>	<i>0.187</i>	<i>0.468</i>	<i>0.312</i>			
# PDS040-012-06.35-AL-P	12	6.350	16.815	15.240	4.750	11.100	12.700	Pin Hub	Twin Core	2024-T4 Aluminium
		<i>0.250</i>	<i>0.662</i>	<i>0.600</i>	<i>0.187</i>	<i>0.437</i>	<i>0.500</i>			
# PDS040-012-06.35-AL-S	12	6.350	16.815	15.240	4.750	11.887	7.925	Split Hub	Twin Core	2024-T4 Aluminium
		<i>0.250</i>	<i>0.662</i>	<i>0.600</i>	<i>0.187</i>	<i>0.468</i>	<i>0.312</i>			
# PDS040-013-03.17-303-P	13	3.175	18.085	16.510	4.750	9.525	7.925	Pin Hub	Twin Core	303 Stainless Steel
		<i>0.125</i>	<i>0.712</i>	<i>0.650</i>	<i>0.187</i>	<i>0.375</i>	<i>0.312</i>			
# PDS040-013-03.17-AL-P	13	3.175	18.085	16.510	4.750	9.525	7.925	Pin Hub	Twin Core	2024-T4 Aluminium
		<i>0.125</i>	<i>0.712</i>	<i>0.650</i>	<i>0.187</i>	<i>0.375</i>	<i>0.312</i>			
# PDS040-013-04.00-AL-P	13	4.000	18.100	16.500	4.800	10.300	9.500	Pin Hub	Twin Core	2024-T4 Aluminium
		<i>0.157</i>	<i>0.713</i>	<i>0.650</i>	<i>0.189</i>	<i>0.406</i>	<i>0.374</i>			

Indicates item not stocked at time of printing - Please enquire for lead time

E&OE Pricing and all details subject to change without notice - Copyright Miniature Bearings Australia Pty Ltd

MBA Size Listings are a guide to sizes only and must not be solely relied on for critical design information.

Sprockets - Posi-Drive - 4.00 mm Circular Pitch

Part Number	Teeth No.	Bore mm	Outside Diameter mm	Pitch Diameter mm	Face Width mm	Overall Length mm	Hub Diameter mm	Hub Configuration	Suit Belt Type	Material
		<i>inches</i>	<i>inches</i>	<i>inches</i>	<i>inches</i>	<i>inches</i>	<i>inches</i>			
# PDS040-013-04.00-303-P	13	4.000	18.100	16.500	4.800	10.300	9.500	Pin Hub	Twin Core	303 Stainless Steel
		<i>0.157</i>	<i>0.713</i>	<i>0.650</i>	<i>0.189</i>	<i>0.406</i>	<i>0.374</i>			
# PDS040-013-04.76-303-P	13	4.762	18.085	16.510	4.750	10.312	9.525	Pin Hub	Twin Core	303 Stainless Steel
		<i>0.187</i>	<i>0.712</i>	<i>0.650</i>	<i>0.187</i>	<i>0.406</i>	<i>0.375</i>			
# PDS040-013-04.76-AL-P	13	4.762	18.085	16.510	4.750	10.312	9.525	Pin Hub	Twin Core	2024-T4 Aluminium
		<i>0.187</i>	<i>0.712</i>	<i>0.650</i>	<i>0.187</i>	<i>0.406</i>	<i>0.375</i>			
# PDS040-013-06.00-303-P	13	6.000	18.100	16.500	4.800	11.000	12.700	Pin Hub	Twin Core	303 Stainless Steel
		<i>0.236</i>	<i>0.713</i>	<i>0.650</i>	<i>0.189</i>	<i>0.433</i>	<i>0.500</i>			
# PDS040-013-06.00-AL-P	13	6.000	18.100	16.500	4.800	11.000	12.700	Pin Hub	Twin Core	2024-T4 Aluminium
		<i>0.236</i>	<i>0.713</i>	<i>0.650</i>	<i>0.189</i>	<i>0.433</i>	<i>0.500</i>			
# PDS040-013-06.35-AL-S	13	6.350	18.085	16.510	4.750	11.887	7.925	Split Hub	Twin Core	2024-T4 Aluminium
		<i>0.250</i>	<i>0.712</i>	<i>0.650</i>	<i>0.187</i>	<i>0.468</i>	<i>0.312</i>			
# PDS040-013-06.35-AL-P	13	6.350	18.085	16.510	4.750	11.100	12.700	Pin Hub	Twin Core	2024-T4 Aluminium
		<i>0.250</i>	<i>0.712</i>	<i>0.650</i>	<i>0.187</i>	<i>0.437</i>	<i>0.500</i>			
# PDS040-013-06.35-303-S	13	6.350	18.085	16.510	4.750	11.887	7.925	Split Hub	Twin Core	303 Stainless Steel
		<i>0.250</i>	<i>0.712</i>	<i>0.650</i>	<i>0.187</i>	<i>0.468</i>	<i>0.312</i>			

Indicates item not stocked at time of printing - Please enquire for lead time

E&OE Pricing and all details subject to change without notice - Copyright Miniature Bearings Australia Pty Ltd

MBA Size Listings are a guide to sizes only and must not be solely relied on for critical design information.

Sprockets - Posi-Drive - 4.00 mm Circular Pitch

Part Number	Teeth No.	Bore mm	Outside Diameter mm	Pitch Diameter mm	Face Width mm	Overall Length mm	Hub Diameter mm	Hub Configuration	Suit Belt Type	Material
		<i>inches</i>	<i>inches</i>	<i>inches</i>	<i>inches</i>	<i>inches</i>	<i>inches</i>			
# PDS040-013-06.35-303-P	13	6.350	18.085	16.510	4.750	11.100	12.700	Pin Hub	Twin Core	303 Stainless Steel
		<i>0.250</i>	<i>0.712</i>	<i>0.650</i>	<i>0.187</i>	<i>0.437</i>	<i>0.500</i>			
# PDS040-014-03.17-AL-P	14	3.175	19.355	17.780	4.750	9.525	7.925	Pin Hub	Twin Core	2024-T4 Aluminium
		<i>0.125</i>	<i>0.762</i>	<i>0.700</i>	<i>0.187</i>	<i>0.375</i>	<i>0.312</i>			
# PDS040-014-03.17-303-P	14	3.175	19.355	17.780	4.750	9.525	7.925	Pin Hub	Twin Core	303 Stainless Steel
		<i>0.125</i>	<i>0.762</i>	<i>0.700</i>	<i>0.187</i>	<i>0.375</i>	<i>0.312</i>			
# PDS040-014-04.00-303-P	14	4.000	19.400	17.800	4.800	10.300	9.500	Pin Hub	Twin Core	303 Stainless Steel
		<i>0.157</i>	<i>0.764</i>	<i>0.701</i>	<i>0.189</i>	<i>0.406</i>	<i>0.374</i>			
# PDS040-014-04.00-AL-P	14	4.000	19.400	17.800	4.800	10.300	9.500	Pin Hub	Twin Core	2024-T4 Aluminium
		<i>0.157</i>	<i>0.764</i>	<i>0.701</i>	<i>0.189</i>	<i>0.406</i>	<i>0.374</i>			
# PDS040-014-04.76-303-P	14	4.762	19.355	17.780	4.750	10.312	9.525	Pin Hub	Twin Core	303 Stainless Steel
		<i>0.187</i>	<i>0.762</i>	<i>0.700</i>	<i>0.187</i>	<i>0.406</i>	<i>0.375</i>			
# PDS040-014-04.76-AL-P	14	4.762	19.355	17.780	4.750	10.312	9.525	Pin Hub	Twin Core	2024-T4 Aluminium
		<i>0.187</i>	<i>0.762</i>	<i>0.700</i>	<i>0.187</i>	<i>0.406</i>	<i>0.375</i>			
# PDS040-014-06.00-303-P	14	6.000	19.400	17.800	4.800	11.000	12.700	Pin Hub	Twin Core	303 Stainless Steel
		<i>0.236</i>	<i>0.764</i>	<i>0.701</i>	<i>0.189</i>	<i>0.433</i>	<i>0.500</i>			

Indicates item not stocked at time of printing - Please enquire for lead time

E&OE Pricing and all details subject to change without notice - Copyright Miniature Bearings Australia Pty Ltd

MBA Size Listings are a guide to sizes only and must not be solely relied on for critical design information.

Sprockets - Posi-Drive - 4.00 mm Circular Pitch

Part Number	Teeth No.	Bore mm	Outside Diameter mm	Pitch Diameter mm	Face Width mm	Overall Length mm	Hub Diameter mm	Hub Configuration	Suit Belt Type	Material
		<i>inches</i>	<i>inches</i>	<i>inches</i>	<i>inches</i>	<i>inches</i>	<i>inches</i>			
# PDS040-014-06.00-AL-P	14	6.000	19.400	17.800	4.800	11.000	12.700	Pin Hub	Twin Core	2024-T4 Aluminium
		<i>0.236</i>	<i>0.764</i>	<i>0.701</i>	<i>0.189</i>	<i>0.433</i>	<i>0.500</i>			
# PDS040-014-06.35-303-S	14	6.350	19.355	17.780	4.750	11.887	7.925	Split Hub	Twin Core	303 Stainless Steel
		<i>0.250</i>	<i>0.762</i>	<i>0.700</i>	<i>0.187</i>	<i>0.468</i>	<i>0.312</i>			
# PDS040-014-06.35-AL-P	14	6.350	19.355	17.780	4.750	11.100	12.700	Pin Hub	Twin Core	2024-T4 Aluminium
		<i>0.250</i>	<i>0.762</i>	<i>0.700</i>	<i>0.187</i>	<i>0.437</i>	<i>0.500</i>			
# PDS040-014-06.35-AL-S	14	6.350	19.355	17.780	4.750	11.887	7.925	Split Hub	Twin Core	2024-T4 Aluminium
		<i>0.250</i>	<i>0.762</i>	<i>0.700</i>	<i>0.187</i>	<i>0.468</i>	<i>0.312</i>			
# PDS040-014-06.35-303-P	14	6.350	19.355	17.780	4.750	11.100	12.700	Pin Hub	Twin Core	303 Stainless Steel
		<i>0.250</i>	<i>0.762</i>	<i>0.700</i>	<i>0.187</i>	<i>0.437</i>	<i>0.500</i>			
# PDS040-015-03.17-303-P	15	3.175	20.625	19.050	4.750	9.525	7.925	Pin Hub	Twin Core	303 Stainless Steel
		<i>0.125</i>	<i>0.812</i>	<i>0.750</i>	<i>0.187</i>	<i>0.375</i>	<i>0.312</i>			
# PDS040-015-03.17-AL-P	15	3.175	20.625	19.050	4.750	9.525	7.925	Pin Hub	Twin Core	2024-T4 Aluminium
		<i>0.125</i>	<i>0.812</i>	<i>0.750</i>	<i>0.187</i>	<i>0.375</i>	<i>0.312</i>			
# PDS040-015-04.00-AL-P	15	4.000	20.600	19.100	4.800	10.300	9.500	Pin Hub	Twin Core	2024-T4 Aluminium
		<i>0.157</i>	<i>0.811</i>	<i>0.752</i>	<i>0.189</i>	<i>0.406</i>	<i>0.374</i>			

Indicates item not stocked at time of printing - Please enquire for lead time

E&OE Pricing and all details subject to change without notice - Copyright Miniature Bearings Australia Pty Ltd

MBA Size Listings are a guide to sizes only and must not be solely relied on for critical design information.

Sprockets - Posi-Drive - 4.00 mm Circular Pitch

Part Number	Teeth No.	Bore mm	Outside Diameter mm	Pitch Diameter mm	Face Width mm	Overall Length mm	Hub Diameter mm	Hub Configuration	Suit Belt Type	Material
		<i>inches</i>	<i>inches</i>	<i>inches</i>	<i>inches</i>	<i>inches</i>	<i>inches</i>			
# PDS040-015-04.00-303-P	15	4.000	20.600	19.100	4.800	10.300	9.500	Pin Hub	Twin Core	303 Stainless Steel
		<i>0.157</i>	<i>0.811</i>	<i>0.752</i>	<i>0.189</i>	<i>0.406</i>	<i>0.374</i>			
# PDS040-015-04.76-AL-P	15	4.762	20.625	19.050	4.750	10.312	9.525	Pin Hub	Twin Core	2024-T4 Aluminium
		<i>0.187</i>	<i>0.812</i>	<i>0.750</i>	<i>0.187</i>	<i>0.406</i>	<i>0.375</i>			
# PDS040-015-04.76-303-P	15	4.762	20.625	19.050	4.750	10.312	9.525	Pin Hub	Twin Core	303 Stainless Steel
		<i>0.187</i>	<i>0.812</i>	<i>0.750</i>	<i>0.187</i>	<i>0.406</i>	<i>0.375</i>			
# PDS040-015-06.00-303-P	15	6.000	20.600	19.100	4.800	11.000	12.700	Pin Hub	Twin Core	303 Stainless Steel
		<i>0.236</i>	<i>0.811</i>	<i>0.752</i>	<i>0.189</i>	<i>0.433</i>	<i>0.500</i>			
# PDS040-015-06.00-AL-P	15	6.000	20.600	19.100	4.800	11.000	12.700	Pin Hub	Twin Core	2024-T4 Aluminium
		<i>0.236</i>	<i>0.811</i>	<i>0.752</i>	<i>0.189</i>	<i>0.433</i>	<i>0.500</i>			
# PDS040-015-06.35-303-P	15	6.350	20.625	19.050	4.750	11.100	12.700	Pin Hub	Twin Core	303 Stainless Steel
		<i>0.250</i>	<i>0.812</i>	<i>0.750</i>	<i>0.187</i>	<i>0.437</i>	<i>0.500</i>			
# PDS040-015-06.35-303-S	15	6.350	20.625	19.050	4.750	11.887	7.925	Split Hub	Twin Core	303 Stainless Steel
		<i>0.250</i>	<i>0.812</i>	<i>0.750</i>	<i>0.187</i>	<i>0.468</i>	<i>0.312</i>			
# PDS040-015-06.35-AL-P	15	6.350	20.625	19.050	4.750	11.100	12.700	Pin Hub	Twin Core	2024-T4 Aluminium
		<i>0.250</i>	<i>0.812</i>	<i>0.750</i>	<i>0.187</i>	<i>0.437</i>	<i>0.500</i>			

Indicates item not stocked at time of printing - Please enquire for lead time

E&OE Pricing and all details subject to change without notice - Copyright Miniature Bearings Australia Pty Ltd

MBA Size Listings are a guide to sizes only and must not be solely relied on for critical design information.

Sprockets - Posi-Drive - 4.00 mm Circular Pitch

Part Number	Teeth No.	Bore mm	Outside Diameter mm	Pitch Diameter mm	Face Width mm	Overall Length mm	Hub Diameter mm	Hub Configuration	Suit Belt Type	Material
		<i>inches</i>	<i>inches</i>	<i>inches</i>	<i>inches</i>	<i>inches</i>	<i>inches</i>			
# PDS040-015-06.35-AL-S	15	6.350	20.625	19.050	4.750	11.887	7.925	Split Hub	Twin Core	2024-T4 Aluminium
		<i>0.250</i>	<i>0.812</i>	<i>0.750</i>	<i>0.187</i>	<i>0.468</i>	<i>0.312</i>			
# PDS040-016-03.17-303-P	16	3.175	21.895	20.320	4.750	9.525	7.925	Pin Hub	Twin Core	303 Stainless Steel
		<i>0.125</i>	<i>0.862</i>	<i>0.800</i>	<i>0.187</i>	<i>0.375</i>	<i>0.312</i>			
# PDS040-016-03.17-AL-P	16	3.175	21.895	20.320	4.750	9.525	7.925	Pin Hub	Twin Core	2024-T4 Aluminium
		<i>0.125</i>	<i>0.862</i>	<i>0.800</i>	<i>0.187</i>	<i>0.375</i>	<i>0.312</i>			
# PDS040-016-04.00-AL-P	16	4.000	21.900	20.300	4.800	10.300	9.500	Pin Hub	Twin Core	2024-T4 Aluminium
		<i>0.157</i>	<i>0.862</i>	<i>0.799</i>	<i>0.189</i>	<i>0.406</i>	<i>0.374</i>			
# PDS040-016-04.00-303-P	16	4.000	21.900	20.300	4.800	10.300	9.500	Pin Hub	Twin Core	303 Stainless Steel
		<i>0.157</i>	<i>0.862</i>	<i>0.799</i>	<i>0.189</i>	<i>0.406</i>	<i>0.374</i>			
# PDS040-016-04.76-303-P	16	4.762	21.895	20.320	4.750	10.312	9.525	Pin Hub	Twin Core	303 Stainless Steel
		<i>0.187</i>	<i>0.862</i>	<i>0.800</i>	<i>0.187</i>	<i>0.406</i>	<i>0.375</i>			
# PDS040-016-04.76-AL-P	16	4.762	21.895	20.320	4.750	10.312	9.525	Pin Hub	Twin Core	2024-T4 Aluminium
		<i>0.187</i>	<i>0.862</i>	<i>0.800</i>	<i>0.187</i>	<i>0.406</i>	<i>0.375</i>			
# PDS040-016-06.00-303-P	16	6.000	21.900	20.300	4.800	11.000	12.700	Pin Hub	Twin Core	303 Stainless Steel
		<i>0.236</i>	<i>0.862</i>	<i>0.799</i>	<i>0.189</i>	<i>0.433</i>	<i>0.500</i>			

Indicates item not stocked at time of printing - Please enquire for lead time

E&OE Pricing and all details subject to change without notice - Copyright Miniature Bearings Australia Pty Ltd

MBA Size Listings are a guide to sizes only and must not be solely relied on for critical design information.

Sprockets - Posi-Drive - 4.00 mm Circular Pitch

Part Number	Teeth No.	Bore mm	Outside Diameter mm	Pitch Diameter mm	Face Width mm	Overall Length mm	Hub Diameter mm	Hub Configuration	Suit Belt Type	Material
		<i>inches</i>	<i>inches</i>	<i>inches</i>	<i>inches</i>	<i>inches</i>	<i>inches</i>			
# PDS040-016-06.00-AL-P	16	6.000	21.900	20.300	4.800	11.000	12.700	Pin Hub	Twin Core	2024-T4 Aluminium
		<i>0.236</i>	<i>0.862</i>	<i>0.799</i>	<i>0.189</i>	<i>0.433</i>	<i>0.500</i>			
# PDS040-016-06.35-303-P	16	6.350	21.895	20.320	4.750	11.100	12.700	Pin Hub	Twin Core	303 Stainless Steel
		<i>0.250</i>	<i>0.862</i>	<i>0.800</i>	<i>0.187</i>	<i>0.437</i>	<i>0.500</i>			
# PDS040-016-06.35-AL-S	16	6.350	21.895	20.320	4.750	11.887	7.925	Split Hub	Twin Core	2024-T4 Aluminium
		<i>0.250</i>	<i>0.862</i>	<i>0.800</i>	<i>0.187</i>	<i>0.468</i>	<i>0.312</i>			
# PDS040-016-06.35-303-S	16	6.350	21.895	20.320	4.750	11.887	7.925	Split Hub	Twin Core	303 Stainless Steel
		<i>0.250</i>	<i>0.862</i>	<i>0.800</i>	<i>0.187</i>	<i>0.468</i>	<i>0.312</i>			
# PDS040-016-06.35-AL-P	16	6.350	21.895	20.320	4.750	11.100	12.700	Pin Hub	Twin Core	2024-T4 Aluminium
		<i>0.250</i>	<i>0.862</i>	<i>0.800</i>	<i>0.187</i>	<i>0.437</i>	<i>0.500</i>			
# PDS040-017-03.17-303-P	17	3.175	23.165	21.590	4.750	9.525	7.925	Pin Hub	Twin Core	303 Stainless Steel
		<i>0.125</i>	<i>0.912</i>	<i>0.850</i>	<i>0.187</i>	<i>0.375</i>	<i>0.312</i>			
# PDS040-017-03.17-AL-P	17	3.175	23.165	21.590	4.750	9.525	7.925	Pin Hub	Twin Core	2024-T4 Aluminium
		<i>0.125</i>	<i>0.912</i>	<i>0.850</i>	<i>0.187</i>	<i>0.375</i>	<i>0.312</i>			
# PDS040-017-04.00-303-P	17	4.000	23.200	21.600	4.800	10.300	9.500	Pin Hub	Twin Core	303 Stainless Steel
		<i>0.157</i>	<i>0.913</i>	<i>0.850</i>	<i>0.189</i>	<i>0.406</i>	<i>0.374</i>			

Indicates item not stocked at time of printing - Please enquire for lead time

E&OE Pricing and all details subject to change without notice - Copyright Miniature Bearings Australia Pty Ltd

MBA Size Listings are a guide to sizes only and must not be solely relied on for critical design information.

Sprockets - Posi-Drive - 4.00 mm Circular Pitch

Part Number	Teeth No.	Bore mm	Outside Diameter mm	Pitch Diameter mm	Face Width mm	Overall Length mm	Hub Diameter mm	Hub Configuration	Suit Belt Type	Material
		<i>inches</i>	<i>inches</i>	<i>inches</i>	<i>inches</i>	<i>inches</i>	<i>inches</i>			
# PDS040-017-04.00-AL-P	17	4.000	23.200	21.600	4.800	10.300	9.500	Pin Hub	Twin Core	2024-T4 Aluminium
		<i>0.157</i>	<i>0.913</i>	<i>0.850</i>	<i>0.189</i>	<i>0.406</i>	<i>0.374</i>			
# PDS040-017-04.76-303-P	17	4.762	23.165	21.590	4.750	10.312	9.525	Pin Hub	Twin Core	303 Stainless Steel
		<i>0.187</i>	<i>0.912</i>	<i>0.850</i>	<i>0.187</i>	<i>0.406</i>	<i>0.375</i>			
# PDS040-017-04.76-AL-P	17	4.762	23.165	21.590	4.750	10.312	9.525	Pin Hub	Twin Core	2024-T4 Aluminium
		<i>0.187</i>	<i>0.912</i>	<i>0.850</i>	<i>0.187</i>	<i>0.406</i>	<i>0.375</i>			
# PDS040-017-06.00-303-P	17	6.000	23.200	21.600	4.800	11.000	12.700	Pin Hub	Twin Core	303 Stainless Steel
		<i>0.236</i>	<i>0.913</i>	<i>0.850</i>	<i>0.189</i>	<i>0.433</i>	<i>0.500</i>			
# PDS040-017-06.00-AL-P	17	6.000	23.200	21.600	4.800	11.000	12.700	Pin Hub	Twin Core	2024-T4 Aluminium
		<i>0.236</i>	<i>0.913</i>	<i>0.850</i>	<i>0.189</i>	<i>0.433</i>	<i>0.500</i>			
# PDS040-017-06.35-303-S	17	6.350	23.165	21.590	4.750	11.887	7.925	Split Hub	Twin Core	303 Stainless Steel
		<i>0.250</i>	<i>0.912</i>	<i>0.850</i>	<i>0.187</i>	<i>0.468</i>	<i>0.312</i>			
# PDS040-017-06.35-AL-P	17	6.350	23.165	21.590	4.750	11.100	12.700	Pin Hub	Twin Core	2024-T4 Aluminium
		<i>0.250</i>	<i>0.912</i>	<i>0.850</i>	<i>0.187</i>	<i>0.437</i>	<i>0.500</i>			
# PDS040-017-06.35-AL-S	17	6.350	23.165	21.590	4.750	11.887	7.925	Split Hub	Twin Core	2024-T4 Aluminium
		<i>0.250</i>	<i>0.912</i>	<i>0.850</i>	<i>0.187</i>	<i>0.468</i>	<i>0.312</i>			

Indicates item not stocked at time of printing - Please enquire for lead time

E&OE Pricing and all details subject to change without notice - Copyright Miniature Bearings Australia Pty Ltd

MBA Size Listings are a guide to sizes only and must not be solely relied on for critical design information.

Sprockets - Posi-Drive - 4.00 mm Circular Pitch

Part Number	Teeth No.	Bore mm	Outside Diameter mm	Pitch Diameter mm	Face Width mm	Overall Length mm	Hub Diameter mm	Hub Configuration	Suit Belt Type	Material
		<i>inches</i>	<i>inches</i>	<i>inches</i>	<i>inches</i>	<i>inches</i>	<i>inches</i>			
# PDS040-017-06.35-303-P	17	6.350	23.165	21.590	4.750	11.100	12.700	Pin Hub	Twin Core	303 Stainless Steel
		<i>0.250</i>	<i>0.912</i>	<i>0.850</i>	<i>0.187</i>	<i>0.437</i>	<i>0.500</i>			
# PDS040-018-03.17-303-P	18	3.175	24.435	22.860	4.750	9.525	7.925	Pin Hub	Twin Core	303 Stainless Steel
		<i>0.125</i>	<i>0.962</i>	<i>0.900</i>	<i>0.187</i>	<i>0.375</i>	<i>0.312</i>			
# PDS040-018-03.17-AL-P	18	3.175	24.435	22.860	4.750	9.525	7.925	Pin Hub	Twin Core	2024-T4 Aluminium
		<i>0.125</i>	<i>0.962</i>	<i>0.900</i>	<i>0.187</i>	<i>0.375</i>	<i>0.312</i>			
# PDS040-018-04.00-AL-P	18	4.000	24.400	22.900	4.800	10.300	9.500	Pin Hub	Twin Core	2024-T4 Aluminium
		<i>0.157</i>	<i>0.961</i>	<i>0.902</i>	<i>0.189</i>	<i>0.406</i>	<i>0.374</i>			
# PDS040-018-04.00-303-P	18	4.000	24.400	22.900	4.800	10.300	9.500	Pin Hub	Twin Core	303 Stainless Steel
		<i>0.157</i>	<i>0.961</i>	<i>0.902</i>	<i>0.189</i>	<i>0.406</i>	<i>0.374</i>			
# PDS040-018-04.76-AL-P	18	4.762	24.435	22.860	4.750	10.312	9.525	Pin Hub	Twin Core	2024-T4 Aluminium
		<i>0.187</i>	<i>0.962</i>	<i>0.900</i>	<i>0.187</i>	<i>0.406</i>	<i>0.375</i>			
# PDS040-018-04.76-303-P	18	4.762	24.435	22.860	4.750	10.312	9.525	Pin Hub	Twin Core	303 Stainless Steel
		<i>0.187</i>	<i>0.962</i>	<i>0.900</i>	<i>0.187</i>	<i>0.406</i>	<i>0.375</i>			
# PDS040-018-06.00-303-P	18	6.000	24.400	22.900	4.800	11.000	12.700	Pin Hub	Twin Core	303 Stainless Steel
		<i>0.236</i>	<i>0.961</i>	<i>0.902</i>	<i>0.189</i>	<i>0.433</i>	<i>0.500</i>			

Indicates item not stocked at time of printing - Please enquire for lead time

E&OE Pricing and all details subject to change without notice - Copyright Miniature Bearings Australia Pty Ltd

MBA Size Listings are a guide to sizes only and must not be solely relied on for critical design information.

Sprockets - Posi-Drive - 4.00 mm Circular Pitch

Part Number	Teeth No.	Bore mm	Outside Diameter mm	Pitch Diameter mm	Face Width mm	Overall Length mm	Hub Diameter mm	Hub Configuration	Suit Belt Type	Material
		<i>inches</i>	<i>inches</i>	<i>inches</i>	<i>inches</i>	<i>inches</i>	<i>inches</i>			
# PDS040-018-06.00-AL-P	18	6.000	24.400	22.900	4.800	11.000	12.700	Pin Hub	Twin Core	2024-T4 Aluminium
		<i>0.236</i>	<i>0.961</i>	<i>0.902</i>	<i>0.189</i>	<i>0.433</i>	<i>0.500</i>			
# PDS040-018-06.35-303-P	18	6.350	24.435	22.860	4.750	11.100	12.700	Pin Hub	Twin Core	303 Stainless Steel
		<i>0.250</i>	<i>0.962</i>	<i>0.900</i>	<i>0.187</i>	<i>0.437</i>	<i>0.500</i>			
# PDS040-018-06.35-303-S	18	6.350	24.435	22.860	4.750	11.887	7.925	Split Hub	Twin Core	303 Stainless Steel
		<i>0.250</i>	<i>0.962</i>	<i>0.900</i>	<i>0.187</i>	<i>0.468</i>	<i>0.312</i>			
PDS040-018-06.35-AL-P	18	6.350	24.435	22.860	4.750	11.100	12.700	Pin Hub	Twin Core	2024-T4 Aluminium
		<i>0.250</i>	<i>0.962</i>	<i>0.900</i>	<i>0.187</i>	<i>0.437</i>	<i>0.500</i>			
# PDS040-018-06.35-AL-S	18	6.350	24.435	22.860	4.750	11.887	7.925	Split Hub	Twin Core	2024-T4 Aluminium
		<i>0.250</i>	<i>0.962</i>	<i>0.900</i>	<i>0.187</i>	<i>0.468</i>	<i>0.312</i>			
# PDS040-019-03.17-303-P	19	3.175	25.705	24.130	4.750	9.525	7.925	Pin Hub	Twin Core	303 Stainless Steel
		<i>0.125</i>	<i>1.012</i>	<i>0.950</i>	<i>0.187</i>	<i>0.375</i>	<i>0.312</i>			
# PDS040-019-03.17-AL-P	19	3.175	25.705	24.130	4.750	9.525	7.925	Pin Hub	Twin Core	2024-T4 Aluminium
		<i>0.125</i>	<i>1.012</i>	<i>0.950</i>	<i>0.187</i>	<i>0.375</i>	<i>0.312</i>			
# PDS040-019-04.00-AL-P	19	4.000	25.700	24.100	4.800	10.300	9.500	Pin Hub	Twin Core	2024-T4 Aluminium
		<i>0.157</i>	<i>1.012</i>	<i>0.949</i>	<i>0.189</i>	<i>0.406</i>	<i>0.374</i>			

Indicates item not stocked at time of printing - Please enquire for lead time

E&OE Pricing and all details subject to change without notice - Copyright Miniature Bearings Australia Pty Ltd

MBA Size Listings are a guide to sizes only and must not be solely relied on for critical design information.

Sprockets - Posi-Drive - 4.00 mm Circular Pitch

Part Number	Teeth No.	Bore mm	Outside Diameter mm	Pitch Diameter mm	Face Width mm	Overall Length mm	Hub Diameter mm	Hub Configuration	Suit Belt Type	Material
		<i>inches</i>	<i>inches</i>	<i>inches</i>	<i>inches</i>	<i>inches</i>	<i>inches</i>			
# PDS040-019-04.00-303-P	19	4.000	25.700	24.100	4.800	10.300	9.500	Pin Hub	Twin Core	303 Stainless Steel
		<i>0.157</i>	<i>1.012</i>	<i>0.949</i>	<i>0.189</i>	<i>0.406</i>	<i>0.374</i>			
# PDS040-019-04.76-303-P	19	4.762	25.705	24.130	4.750	10.312	9.525	Pin Hub	Twin Core	303 Stainless Steel
		<i>0.187</i>	<i>1.012</i>	<i>0.950</i>	<i>0.187</i>	<i>0.406</i>	<i>0.375</i>			
# PDS040-019-04.76-AL-P	19	4.762	25.705	24.130	4.750	10.312	9.525	Pin Hub	Twin Core	2024-T4 Aluminium
		<i>0.187</i>	<i>1.012</i>	<i>0.950</i>	<i>0.187</i>	<i>0.406</i>	<i>0.375</i>			
# PDS040-019-06.00-AL-P	19	6.000	25.700	24.100	4.800	11.000	12.700	Pin Hub	Twin Core	2024-T4 Aluminium
		<i>0.236</i>	<i>1.012</i>	<i>0.949</i>	<i>0.189</i>	<i>0.433</i>	<i>0.500</i>			
# PDS040-019-06.00-303-P	19	6.000	25.700	24.100	4.800	11.000	12.700	Pin Hub	Twin Core	303 Stainless Steel
		<i>0.236</i>	<i>1.012</i>	<i>0.949</i>	<i>0.189</i>	<i>0.433</i>	<i>0.500</i>			
# PDS040-019-06.35-AL-S	19	6.350	25.705	24.130	4.750	11.887	7.925	Split Hub	Twin Core	2024-T4 Aluminium
		<i>0.250</i>	<i>1.012</i>	<i>0.950</i>	<i>0.187</i>	<i>0.468</i>	<i>0.312</i>			
# PDS040-019-06.35-AL-P	19	6.350	25.705	24.130	4.750	11.100	12.700	Pin Hub	Twin Core	2024-T4 Aluminium
		<i>0.250</i>	<i>1.012</i>	<i>0.950</i>	<i>0.187</i>	<i>0.437</i>	<i>0.500</i>			
# PDS040-019-06.35-303-S	19	6.350	25.705	24.130	4.750	11.887	7.925	Split Hub	Twin Core	303 Stainless Steel
		<i>0.250</i>	<i>1.012</i>	<i>0.950</i>	<i>0.187</i>	<i>0.468</i>	<i>0.312</i>			

Indicates item not stocked at time of printing - Please enquire for lead time

E&OE Pricing and all details subject to change without notice - Copyright Miniature Bearings Australia Pty Ltd

MBA Size Listings are a guide to sizes only and must not be solely relied on for critical design information.

Sprockets - Posi-Drive - 4.00 mm Circular Pitch

Part Number	Teeth No.	Bore mm	Outside Diameter mm	Pitch Diameter mm	Face Width mm	Overall Length mm	Hub Diameter mm	Hub Configuration	Suit Belt Type	Material
		<i>inches</i>	<i>inches</i>	<i>inches</i>	<i>inches</i>	<i>inches</i>	<i>inches</i>			
# PDS040-019-06.35-303-P	19	6.350	25.705	24.130	4.750	11.100	12.700	Pin Hub	Twin Core	303 Stainless Steel
		<i>0.250</i>	<i>1.012</i>	<i>0.950</i>	<i>0.187</i>	<i>0.437</i>	<i>0.500</i>			
# PDS040-020-03.17-303-P	20	3.175	26.975	25.400	4.750	9.525	7.925	Pin Hub	Twin Core	303 Stainless Steel
		<i>0.125</i>	<i>1.062</i>	<i>1.000</i>	<i>0.187</i>	<i>0.375</i>	<i>0.312</i>			
# PDS040-020-03.17-AL-P	20	3.175	26.975	25.400	4.750	9.525	7.925	Pin Hub	Twin Core	2024-T4 Aluminium
		<i>0.125</i>	<i>1.062</i>	<i>1.000</i>	<i>0.187</i>	<i>0.375</i>	<i>0.312</i>			
# PDS040-020-04.00-303-P	20	4.000	27.000	25.400	4.800	10.300	9.500	Pin Hub	Twin Core	303 Stainless Steel
		<i>0.157</i>	<i>1.063</i>	<i>1.000</i>	<i>0.189</i>	<i>0.406</i>	<i>0.374</i>			
# PDS040-020-04.00-AL-P	20	4.000	27.000	25.400	4.800	10.300	9.500	Pin Hub	Twin Core	2024-T4 Aluminium
		<i>0.157</i>	<i>1.063</i>	<i>1.000</i>	<i>0.189</i>	<i>0.406</i>	<i>0.374</i>			
# PDS040-020-04.76-AL-P	20	4.762	26.975	25.400	4.750	10.312	9.525	Pin Hub	Twin Core	2024-T4 Aluminium
		<i>0.187</i>	<i>1.062</i>	<i>1.000</i>	<i>0.187</i>	<i>0.406</i>	<i>0.375</i>			
# PDS040-020-04.76-303-P	20	4.762	26.975	25.400	4.750	10.312	9.525	Pin Hub	Twin Core	303 Stainless Steel
		<i>0.187</i>	<i>1.062</i>	<i>1.000</i>	<i>0.187</i>	<i>0.406</i>	<i>0.375</i>			
# PDS040-020-06.00-303-P	20	6.000	27.000	25.400	4.800	11.000	12.700	Pin Hub	Twin Core	303 Stainless Steel
		<i>0.236</i>	<i>1.063</i>	<i>1.000</i>	<i>0.189</i>	<i>0.433</i>	<i>0.500</i>			

Indicates item not stocked at time of printing - Please enquire for lead time

E&OE Pricing and all details subject to change without notice - Copyright Miniature Bearings Australia Pty Ltd

MBA Size Listings are a guide to sizes only and must not be solely relied on for critical design information.

Sprockets - Posi-Drive - 4.00 mm Circular Pitch

Part Number	Teeth No.	Bore mm	Outside Diameter mm	Pitch Diameter mm	Face Width mm	Overall Length mm	Hub Diameter mm	Hub Configuration	Suit Belt Type	Material
		<i>inches</i>	<i>inches</i>	<i>inches</i>	<i>inches</i>	<i>inches</i>	<i>inches</i>			
# PDS040-020-06.00-AL-P	20	6.000	27.000	25.400	4.800	11.000	12.700	Pin Hub	Twin Core	2024-T4 Aluminium
		<i>0.236</i>	<i>1.063</i>	<i>1.000</i>	<i>0.189</i>	<i>0.433</i>	<i>0.500</i>			
# PDS040-020-06.35-303-P	20	6.350	26.975	25.400	4.750	11.100	12.700	Pin Hub	Twin Core	303 Stainless Steel
		<i>0.250</i>	<i>1.062</i>	<i>1.000</i>	<i>0.187</i>	<i>0.437</i>	<i>0.500</i>			
# PDS040-020-06.35-303-S	20	6.350	26.975	25.400	4.750	11.887	7.925	Split Hub	Twin Core	303 Stainless Steel
		<i>0.250</i>	<i>1.062</i>	<i>1.000</i>	<i>0.187</i>	<i>0.468</i>	<i>0.312</i>			
# PDS040-020-06.35-AL-P	20	6.350	26.975	25.400	4.750	11.100	12.700	Pin Hub	Twin Core	2024-T4 Aluminium
		<i>0.250</i>	<i>1.062</i>	<i>1.000</i>	<i>0.187</i>	<i>0.437</i>	<i>0.500</i>			
# PDS040-020-06.35-AL-S	20	6.350	26.975	25.400	4.750	11.887	7.925	Split Hub	Twin Core	2024-T4 Aluminium
		<i>0.250</i>	<i>1.062</i>	<i>1.000</i>	<i>0.187</i>	<i>0.468</i>	<i>0.312</i>			
# PDS040-022-03.17-AL-P	22	3.175	29.515	27.940	4.750	9.525	7.925	Pin Hub	Twin Core	2024-T4 Aluminium
		<i>0.125</i>	<i>1.162</i>	<i>1.100</i>	<i>0.187</i>	<i>0.375</i>	<i>0.312</i>			
# PDS040-022-03.17-303-P	22	3.175	29.515	27.940	4.750	9.525	7.925	Pin Hub	Twin Core	303 Stainless Steel
		<i>0.125</i>	<i>1.162</i>	<i>1.100</i>	<i>0.187</i>	<i>0.375</i>	<i>0.312</i>			
# PDS040-022-04.00-AL-P	22	4.000	29.500	27.900	4.800	10.300	9.500	Pin Hub	Twin Core	2024-T4 Aluminium
		<i>0.157</i>	<i>1.161</i>	<i>1.098</i>	<i>0.189</i>	<i>0.406</i>	<i>0.374</i>			

Indicates item not stocked at time of printing - Please enquire for lead time

E&OE Pricing and all details subject to change without notice - Copyright Miniature Bearings Australia Pty Ltd

MBA Size Listings are a guide to sizes only and must not be solely relied on for critical design information.

Sprockets - Posi-Drive - 4.00 mm Circular Pitch

Part Number	Teeth No.	Bore mm	Outside Diameter mm	Pitch Diameter mm	Face Width mm	Overall Length mm	Hub Diameter mm	Hub Configuration	Suit Belt Type	Material
		<i>inches</i>	<i>inches</i>	<i>inches</i>	<i>inches</i>	<i>inches</i>	<i>inches</i>			
# PDS040-022-04.00-303-P	22	4.000	29.500	27.900	4.800	10.300	9.500	Pin Hub	Twin Core	303 Stainless Steel
		<i>0.157</i>	<i>1.161</i>	<i>1.098</i>	<i>0.189</i>	<i>0.406</i>	<i>0.374</i>			
# PDS040-022-04.76-303-P	22	4.762	29.515	27.940	4.750	10.312	9.525	Pin Hub	Twin Core	303 Stainless Steel
		<i>0.187</i>	<i>1.162</i>	<i>1.100</i>	<i>0.187</i>	<i>0.406</i>	<i>0.375</i>			
# PDS040-022-04.76-AL-P	22	4.762	29.515	27.940	4.750	10.312	9.525	Pin Hub	Twin Core	2024-T4 Aluminium
		<i>0.187</i>	<i>1.162</i>	<i>1.100</i>	<i>0.187</i>	<i>0.406</i>	<i>0.375</i>			
# PDS040-022-06.00-303-P	22	6.000	29.500	27.900	4.800	11.000	12.700	Pin Hub	Twin Core	303 Stainless Steel
		<i>0.236</i>	<i>1.161</i>	<i>1.098</i>	<i>0.189</i>	<i>0.433</i>	<i>0.500</i>			
# PDS040-022-06.00-AL-P	22	6.000	29.500	27.900	4.800	11.000	12.700	Pin Hub	Twin Core	2024-T4 Aluminium
		<i>0.236</i>	<i>1.161</i>	<i>1.098</i>	<i>0.189</i>	<i>0.433</i>	<i>0.500</i>			
# PDS040-022-06.35-303-S	22	6.350	29.515	27.940	4.750	11.887	7.925	Split Hub	Twin Core	303 Stainless Steel
		<i>0.250</i>	<i>1.162</i>	<i>1.100</i>	<i>0.187</i>	<i>0.468</i>	<i>0.312</i>			
# PDS040-022-06.35-AL-P	22	6.350	29.515	27.940	4.750	11.100	12.700	Pin Hub	Twin Core	2024-T4 Aluminium
		<i>0.250</i>	<i>1.162</i>	<i>1.100</i>	<i>0.187</i>	<i>0.437</i>	<i>0.500</i>			
# PDS040-022-06.35-303-P	22	6.350	29.515	27.940	4.750	11.100	12.700	Pin Hub	Twin Core	303 Stainless Steel
		<i>0.250</i>	<i>1.162</i>	<i>1.100</i>	<i>0.187</i>	<i>0.437</i>	<i>0.500</i>			

Indicates item not stocked at time of printing - Please enquire for lead time

E&OE Pricing and all details subject to change without notice - Copyright Miniature Bearings Australia Pty Ltd

MBA Size Listings are a guide to sizes only and must not be solely relied on for critical design information.

Sprockets - Posi-Drive - 4.00 mm Circular Pitch

Part Number	Teeth No.	Bore mm	Outside Diameter mm	Pitch Diameter mm	Face Width mm	Overall Length mm	Hub Diameter mm	Hub Configuration	Suit Belt Type	Material
		<i>inches</i>	<i>inches</i>	<i>inches</i>	<i>inches</i>	<i>inches</i>	<i>inches</i>			
# PDS040-022-06.35-AL-S	22	6.350	29.515	27.940	4.750	11.887	7.925	Split Hub	Twin Core	2024-T4 Aluminium
		<i>0.250</i>	<i>1.162</i>	<i>1.100</i>	<i>0.187</i>	<i>0.468</i>	<i>0.312</i>			
# PDS040-024-03.17-303-P	24	3.175	32.055	30.480	4.750	9.525	7.925	Pin Hub	Twin Core	303 Stainless Steel
		<i>0.125</i>	<i>1.262</i>	<i>1.200</i>	<i>0.187</i>	<i>0.375</i>	<i>0.312</i>			
# PDS040-024-03.17-AL-P	24	3.175	32.055	30.480	4.750	9.525	7.925	Pin Hub	Twin Core	2024-T4 Aluminium
		<i>0.125</i>	<i>1.262</i>	<i>1.200</i>	<i>0.187</i>	<i>0.375</i>	<i>0.312</i>			
# PDS040-024-04.00-303-P	24	4.000	32.100	30.500	4.800	10.300	9.500	Pin Hub	Twin Core	303 Stainless Steel
		<i>0.157</i>	<i>1.264</i>	<i>1.201</i>	<i>0.189</i>	<i>0.406</i>	<i>0.374</i>			
# PDS040-024-04.00-AL-P	24	4.000	32.100	30.500	4.800	10.300	9.500	Pin Hub	Twin Core	2024-T4 Aluminium
		<i>0.157</i>	<i>1.264</i>	<i>1.201</i>	<i>0.189</i>	<i>0.406</i>	<i>0.374</i>			
# PDS040-024-04.76-303-P	24	4.762	32.055	30.480	4.750	10.312	9.525	Pin Hub	Twin Core	303 Stainless Steel
		<i>0.187</i>	<i>1.262</i>	<i>1.200</i>	<i>0.187</i>	<i>0.406</i>	<i>0.375</i>			
# PDS040-024-04.76-AL-P	24	4.762	32.055	30.480	4.750	10.312	9.525	Pin Hub	Twin Core	2024-T4 Aluminium
		<i>0.187</i>	<i>1.262</i>	<i>1.200</i>	<i>0.187</i>	<i>0.406</i>	<i>0.375</i>			
# PDS040-024-06.00-AL-P	24	6.000	32.100	30.500	4.800	11.000	12.700	Pin Hub	Twin Core	2024-T4 Aluminium
		<i>0.236</i>	<i>1.264</i>	<i>1.201</i>	<i>0.189</i>	<i>0.433</i>	<i>0.500</i>			

Indicates item not stocked at time of printing - Please enquire for lead time

E&OE Pricing and all details subject to change without notice - Copyright Miniature Bearings Australia Pty Ltd

MBA Size Listings are a guide to sizes only and must not be solely relied on for critical design information.

Sprockets - Posi-Drive - 4.00 mm Circular Pitch

Part Number	Teeth No.	Bore mm	Outside Diameter mm	Pitch Diameter mm	Face Width mm	Overall Length mm	Hub Diameter mm	Hub Configuration	Suit Belt Type	Material
		<i>inches</i>	<i>inches</i>	<i>inches</i>	<i>inches</i>	<i>inches</i>	<i>inches</i>			
# PDS040-024-06.00-303-P	24	6.000	32.100	30.500	4.800	11.000	12.700	Pin Hub	Twin Core	303 Stainless Steel
		<i>0.236</i>	<i>1.264</i>	<i>1.201</i>	<i>0.189</i>	<i>0.433</i>	<i>0.500</i>			
# PDS040-024-06.35-303-P	24	6.350	32.055	30.480	4.750	11.100	12.700	Pin Hub	Twin Core	303 Stainless Steel
		<i>0.250</i>	<i>1.262</i>	<i>1.200</i>	<i>0.187</i>	<i>0.437</i>	<i>0.500</i>			
# PDS040-024-06.35-303-S	24	6.350	32.055	30.480	4.750	11.887	7.925	Split Hub	Twin Core	303 Stainless Steel
		<i>0.250</i>	<i>1.262</i>	<i>1.200</i>	<i>0.187</i>	<i>0.468</i>	<i>0.312</i>			
# PDS040-024-06.35-AL-P	24	6.350	32.055	30.480	4.750	11.100	12.700	Pin Hub	Twin Core	2024-T4 Aluminium
		<i>0.250</i>	<i>1.262</i>	<i>1.200</i>	<i>0.187</i>	<i>0.437</i>	<i>0.500</i>			
# PDS040-024-06.35-AL-S	24	6.350	32.055	30.480	4.750	11.887	7.925	Split Hub	Twin Core	2024-T4 Aluminium
		<i>0.250</i>	<i>1.262</i>	<i>1.200</i>	<i>0.187</i>	<i>0.468</i>	<i>0.312</i>			
# PDS040-025-03.17-AL-P	25	3.175	33.325	31.750	4.750	9.525	7.925	Pin Hub	Twin Core	2024-T4 Aluminium
		<i>0.125</i>	<i>1.312</i>	<i>1.250</i>	<i>0.187</i>	<i>0.375</i>	<i>0.312</i>			
# PDS040-025-03.17-303-P	25	3.175	33.325	31.750	4.750	9.525	7.925	Pin Hub	Twin Core	303 Stainless Steel
		<i>0.125</i>	<i>1.312</i>	<i>1.250</i>	<i>0.187</i>	<i>0.375</i>	<i>0.312</i>			
# PDS040-025-04.00-303-P	25	4.000	33.300	31.800	4.800	10.300	9.500	Pin Hub	Twin Core	303 Stainless Steel
		<i>0.157</i>	<i>1.311</i>	<i>1.252</i>	<i>0.189</i>	<i>0.406</i>	<i>0.374</i>			

Indicates item not stocked at time of printing - Please enquire for lead time

E&OE Pricing and all details subject to change without notice - Copyright Miniature Bearings Australia Pty Ltd

MBA Size Listings are a guide to sizes only and must not be solely relied on for critical design information.

Sprockets - Posi-Drive - 4.00 mm Circular Pitch

Part Number	Teeth No.	Bore mm	Outside Diameter mm	Pitch Diameter mm	Face Width mm	Overall Length mm	Hub Diameter mm	Hub Configuration	Suit Belt Type	Material
		<i>inches</i>	<i>inches</i>	<i>inches</i>	<i>inches</i>	<i>inches</i>	<i>inches</i>			
# PDS040-025-04.00-AL-P	25	4.000	33.300	31.800	4.800	10.300	9.500	Pin Hub	Twin Core	2024-T4 Aluminium
		<i>0.157</i>	<i>1.311</i>	<i>1.252</i>	<i>0.189</i>	<i>0.406</i>	<i>0.374</i>			
# PDS040-025-04.76-303-P	25	4.762	33.325	31.750	4.750	10.312	9.525	Pin Hub	Twin Core	303 Stainless Steel
		<i>0.187</i>	<i>1.312</i>	<i>1.250</i>	<i>0.187</i>	<i>0.406</i>	<i>0.375</i>			
# PDS040-025-04.76-AL-P	25	4.762	33.325	31.750	4.750	10.312	9.525	Pin Hub	Twin Core	2024-T4 Aluminium
		<i>0.187</i>	<i>1.312</i>	<i>1.250</i>	<i>0.187</i>	<i>0.406</i>	<i>0.375</i>			
# PDS040-025-06.00-303-P	25	6.000	33.300	31.800	4.800	11.000	12.700	Pin Hub	Twin Core	303 Stainless Steel
		<i>0.236</i>	<i>1.311</i>	<i>1.252</i>	<i>0.189</i>	<i>0.433</i>	<i>0.500</i>			
# PDS040-025-06.00-AL-P	25	6.000	33.300	31.800	4.800	11.000	12.700	Pin Hub	Twin Core	2024-T4 Aluminium
		<i>0.236</i>	<i>1.311</i>	<i>1.252</i>	<i>0.189</i>	<i>0.433</i>	<i>0.500</i>			
# PDS040-025-06.35-AL-S	25	6.350	33.325	31.750	4.750	11.887	7.925	Split Hub	Twin Core	2024-T4 Aluminium
		<i>0.250</i>	<i>1.312</i>	<i>1.250</i>	<i>0.187</i>	<i>0.468</i>	<i>0.312</i>			
# PDS040-025-06.35-AL-P	25	6.350	33.325	31.750	4.750	11.100	12.700	Pin Hub	Twin Core	2024-T4 Aluminium
		<i>0.250</i>	<i>1.312</i>	<i>1.250</i>	<i>0.187</i>	<i>0.437</i>	<i>0.500</i>			
# PDS040-025-06.35-303-S	25	6.350	33.325	31.750	4.750	11.887	7.925	Split Hub	Twin Core	303 Stainless Steel
		<i>0.250</i>	<i>1.312</i>	<i>1.250</i>	<i>0.187</i>	<i>0.468</i>	<i>0.312</i>			

Indicates item not stocked at time of printing - Please enquire for lead time

E&OE Pricing and all details subject to change without notice - Copyright Miniature Bearings Australia Pty Ltd

MBA Size Listings are a guide to sizes only and must not be solely relied on for critical design information.

Sprockets - Posi-Drive - 4.00 mm Circular Pitch

Part Number	Teeth No.	Bore mm	Outside Diameter mm	Pitch Diameter mm	Face Width mm	Overall Length mm	Hub Diameter mm	Hub Configuration	Suit Belt Type	Material
		<i>inches</i>	<i>inches</i>	<i>inches</i>	<i>inches</i>	<i>inches</i>	<i>inches</i>			
# PDS040-025-06.35-303-P	25	6.350	33.325	31.750	4.750	11.100	12.700	Pin Hub	Twin Core	303 Stainless Steel
		<i>0.250</i>	<i>1.312</i>	<i>1.250</i>	<i>0.187</i>	<i>0.437</i>	<i>0.500</i>			
# PDS040-026-03.17-AL-P	26	3.175	34.595	33.020	4.750	9.525	7.925	Pin Hub	Twin Core	2024-T4 Aluminium
		<i>0.125</i>	<i>1.362</i>	<i>1.300</i>	<i>0.187</i>	<i>0.375</i>	<i>0.312</i>			
# PDS040-026-03.17-303-P	26	3.175	34.595	33.020	4.750	9.525	7.925	Pin Hub	Twin Core	303 Stainless Steel
		<i>0.125</i>	<i>1.362</i>	<i>1.300</i>	<i>0.187</i>	<i>0.375</i>	<i>0.312</i>			
# PDS040-026-04.00-303-P	26	4.000	34.600	33.000	4.800	10.300	9.500	Pin Hub	Twin Core	303 Stainless Steel
		<i>0.157</i>	<i>1.362</i>	<i>1.299</i>	<i>0.189</i>	<i>0.406</i>	<i>0.374</i>			
# PDS040-026-04.00-AL-P	26	4.000	34.600	33.000	4.800	10.300	9.500	Pin Hub	Twin Core	2024-T4 Aluminium
		<i>0.157</i>	<i>1.362</i>	<i>1.299</i>	<i>0.189</i>	<i>0.406</i>	<i>0.374</i>			
# PDS040-026-04.76-303-P	26	4.762	34.595	33.020	4.750	10.312	9.525	Pin Hub	Twin Core	303 Stainless Steel
		<i>0.187</i>	<i>1.362</i>	<i>1.300</i>	<i>0.187</i>	<i>0.406</i>	<i>0.375</i>			
# PDS040-026-04.76-AL-P	26	4.762	34.595	33.020	4.750	10.312	9.525	Pin Hub	Twin Core	2024-T4 Aluminium
		<i>0.187</i>	<i>1.362</i>	<i>1.300</i>	<i>0.187</i>	<i>0.406</i>	<i>0.375</i>			
# PDS040-026-06.00-303-P	26	6.000	34.600	33.000	4.800	11.000	12.700	Pin Hub	Twin Core	303 Stainless Steel
		<i>0.236</i>	<i>1.362</i>	<i>1.299</i>	<i>0.189</i>	<i>0.433</i>	<i>0.500</i>			

Indicates item not stocked at time of printing - Please enquire for lead time

E&OE Pricing and all details subject to change without notice - Copyright Miniature Bearings Australia Pty Ltd

MBA Size Listings are a guide to sizes only and must not be solely relied on for critical design information.

Sprockets - Posi-Drive - 4.00 mm Circular Pitch

Part Number	Teeth No.	Bore mm	Outside Diameter mm	Pitch Diameter mm	Face Width mm	Overall Length mm	Hub Diameter mm	Hub Configuration	Suit Belt Type	Material
		<i>inches</i>	<i>inches</i>	<i>inches</i>	<i>inches</i>	<i>inches</i>	<i>inches</i>			
# PDS040-026-06.00-AL-P	26	6.000	34.600	33.000	4.800	11.000	12.700	Pin Hub	Twin Core	2024-T4 Aluminium
		<i>0.236</i>	<i>1.362</i>	<i>1.299</i>	<i>0.189</i>	<i>0.433</i>	<i>0.500</i>			
# PDS040-026-06.35-303-S	26	6.350	34.595	33.020	4.750	11.887	7.925	Split Hub	Twin Core	303 Stainless Steel
		<i>0.250</i>	<i>1.362</i>	<i>1.300</i>	<i>0.187</i>	<i>0.468</i>	<i>0.312</i>			
# PDS040-026-06.35-AL-P	26	6.350	34.595	33.020	4.750	11.100	12.700	Pin Hub	Twin Core	2024-T4 Aluminium
		<i>0.250</i>	<i>1.362</i>	<i>1.300</i>	<i>0.187</i>	<i>0.437</i>	<i>0.500</i>			
# PDS040-026-06.35-AL-S	26	6.350	34.595	33.020	4.750	11.887	7.925	Split Hub	Twin Core	2024-T4 Aluminium
		<i>0.250</i>	<i>1.362</i>	<i>1.300</i>	<i>0.187</i>	<i>0.468</i>	<i>0.312</i>			
# PDS040-026-06.35-303-P	26	6.350	34.595	33.020	4.750	11.100	12.700	Pin Hub	Twin Core	303 Stainless Steel
		<i>0.250</i>	<i>1.362</i>	<i>1.300</i>	<i>0.187</i>	<i>0.437</i>	<i>0.500</i>			
# PDS040-028-03.17-303-P	28	3.175	37.135	35.560	4.750	9.525	7.925	Pin Hub	Twin Core	303 Stainless Steel
		<i>0.125</i>	<i>1.462</i>	<i>1.400</i>	<i>0.187</i>	<i>0.375</i>	<i>0.312</i>			
# PDS040-028-03.17-AL-P	28	3.175	37.135	35.560	4.750	9.525	7.925	Pin Hub	Twin Core	2024-T4 Aluminium
		<i>0.125</i>	<i>1.462</i>	<i>1.400</i>	<i>0.187</i>	<i>0.375</i>	<i>0.312</i>			
# PDS040-028-04.00-AL-P	28	4.000	37.100	35.600	4.800	10.300	9.500	Pin Hub	Twin Core	2024-T4 Aluminium
		<i>0.157</i>	<i>1.461</i>	<i>1.402</i>	<i>0.189</i>	<i>0.406</i>	<i>0.374</i>			

Indicates item not stocked at time of printing - Please enquire for lead time

E&OE Pricing and all details subject to change without notice - Copyright Miniature Bearings Australia Pty Ltd

MBA Size Listings are a guide to sizes only and must not be solely relied on for critical design information.

Sprockets - Posi-Drive - 4.00 mm Circular Pitch

Part Number	Teeth No.	Bore mm	Outside Diameter mm	Pitch Diameter mm	Face Width mm	Overall Length mm	Hub Diameter mm	Hub Configuration	Suit Belt Type	Material
		<i>inches</i>	<i>inches</i>	<i>inches</i>	<i>inches</i>	<i>inches</i>	<i>inches</i>			
# PDS040-028-04.00-303-P	28	4.000	37.100	35.600	4.800	10.300	9.500	Pin Hub	Twin Core	303 Stainless Steel
		<i>0.157</i>	<i>1.461</i>	<i>1.402</i>	<i>0.189</i>	<i>0.406</i>	<i>0.374</i>			
# PDS040-028-04.76-303-P	28	4.762	37.135	35.560	4.750	10.312	9.525	Pin Hub	Twin Core	303 Stainless Steel
		<i>0.187</i>	<i>1.462</i>	<i>1.400</i>	<i>0.187</i>	<i>0.406</i>	<i>0.375</i>			
# PDS040-028-04.76-AL-P	28	4.762	37.135	35.560	4.750	10.312	9.525	Pin Hub	Twin Core	2024-T4 Aluminium
		<i>0.187</i>	<i>1.462</i>	<i>1.400</i>	<i>0.187</i>	<i>0.406</i>	<i>0.375</i>			
# PDS040-028-06.00-303-P	28	6.000	37.100	35.600	4.800	11.000	12.700	Pin Hub	Twin Core	303 Stainless Steel
		<i>0.236</i>	<i>1.461</i>	<i>1.402</i>	<i>0.189</i>	<i>0.433</i>	<i>0.500</i>			
# PDS040-028-06.00-AL-P	28	6.000	37.100	35.600	4.800	11.000	12.700	Pin Hub	Twin Core	2024-T4 Aluminium
		<i>0.236</i>	<i>1.461</i>	<i>1.402</i>	<i>0.189</i>	<i>0.433</i>	<i>0.500</i>			
# PDS040-028-06.35-303-P	28	6.350	37.135	35.560	4.750	11.100	12.700	Pin Hub	Twin Core	303 Stainless Steel
		<i>0.250</i>	<i>1.462</i>	<i>1.400</i>	<i>0.187</i>	<i>0.437</i>	<i>0.500</i>			
# PDS040-028-06.35-303-S	28	6.350	37.135	35.560	4.750	11.887	7.925	Split Hub	Twin Core	303 Stainless Steel
		<i>0.250</i>	<i>1.462</i>	<i>1.400</i>	<i>0.187</i>	<i>0.468</i>	<i>0.312</i>			
# PDS040-028-06.35-AL-P	28	6.350	37.135	35.560	4.750	11.100	12.700	Pin Hub	Twin Core	2024-T4 Aluminium
		<i>0.250</i>	<i>1.462</i>	<i>1.400</i>	<i>0.187</i>	<i>0.437</i>	<i>0.500</i>			

Indicates item not stocked at time of printing - Please enquire for lead time

E&OE Pricing and all details subject to change without notice - Copyright Miniature Bearings Australia Pty Ltd

MBA Size Listings are a guide to sizes only and must not be solely relied on for critical design information.

Sprockets - Posi-Drive - 4.00 mm Circular Pitch

Part Number	Teeth No.	Bore mm	Outside Diameter mm	Pitch Diameter mm	Face Width mm	Overall Length mm	Hub Diameter mm	Hub Configuration	Suit Belt Type	Material
		<i>inches</i>	<i>inches</i>	<i>inches</i>	<i>inches</i>	<i>inches</i>	<i>inches</i>			
# PDS040-028-06.35-AL-S	28	6.350	37.135	35.560	4.750	11.887	7.925	Split Hub	Twin Core	2024-T4 Aluminium
		<i>0.250</i>	<i>1.462</i>	<i>1.400</i>	<i>0.187</i>	<i>0.468</i>	<i>0.312</i>			
# PDS040-030-03.17-303-P	30	3.175	39.675	38.100	4.750	9.525	7.925	Pin Hub	Twin Core	303 Stainless Steel
		<i>0.125</i>	<i>1.562</i>	<i>1.500</i>	<i>0.187</i>	<i>0.375</i>	<i>0.312</i>			
# PDS040-030-03.17-AL-P	30	3.175	39.675	38.100	4.750	9.525	7.925	Pin Hub	Twin Core	2024-T4 Aluminium
		<i>0.125</i>	<i>1.562</i>	<i>1.500</i>	<i>0.187</i>	<i>0.375</i>	<i>0.312</i>			
# PDS040-030-04.00-AL-P	30	4.000	39.700	38.100	4.800	10.300	9.500	Pin Hub	Twin Core	2024-T4 Aluminium
		<i>0.157</i>	<i>1.563</i>	<i>1.500</i>	<i>0.189</i>	<i>0.406</i>	<i>0.374</i>			
# PDS040-030-04.00-303-P	30	4.000	39.700	38.100	4.800	10.300	9.500	Pin Hub	Twin Core	303 Stainless Steel
		<i>0.157</i>	<i>1.563</i>	<i>1.500</i>	<i>0.189</i>	<i>0.406</i>	<i>0.374</i>			
# PDS040-030-04.76-303-P	30	4.762	39.675	38.100	4.750	10.312	9.525	Pin Hub	Twin Core	303 Stainless Steel
		<i>0.187</i>	<i>1.562</i>	<i>1.500</i>	<i>0.187</i>	<i>0.406</i>	<i>0.375</i>			
# PDS040-030-04.76-AL-P	30	4.762	39.675	38.100	4.750	10.312	9.525	Pin Hub	Twin Core	2024-T4 Aluminium
		<i>0.187</i>	<i>1.562</i>	<i>1.500</i>	<i>0.187</i>	<i>0.406</i>	<i>0.375</i>			
# PDS040-030-06.00-303-P	30	6.000	39.700	38.100	4.800	11.000	12.700	Pin Hub	Twin Core	303 Stainless Steel
		<i>0.236</i>	<i>1.563</i>	<i>1.500</i>	<i>0.189</i>	<i>0.433</i>	<i>0.500</i>			

Indicates item not stocked at time of printing - Please enquire for lead time

E&OE Pricing and all details subject to change without notice - Copyright Miniature Bearings Australia Pty Ltd

MBA Size Listings are a guide to sizes only and must not be solely relied on for critical design information.

Sprockets - Posi-Drive - 4.00 mm Circular Pitch

Part Number	Teeth No.	Bore mm	Outside Diameter mm	Pitch Diameter mm	Face Width mm	Overall Length mm	Hub Diameter mm	Hub Configuration	Suit Belt Type	Material
		<i>inches</i>	<i>inches</i>	<i>inches</i>	<i>inches</i>	<i>inches</i>	<i>inches</i>			
# PDS040-030-06.00-AL-P	30	6.000	39.700	38.100	4.800	11.000	12.700	Pin Hub	Twin Core	2024-T4 Aluminium
		<i>0.236</i>	<i>1.563</i>	<i>1.500</i>	<i>0.189</i>	<i>0.433</i>	<i>0.500</i>			
# PDS040-030-06.35-303-P	30	6.350	39.675	38.100	4.750	11.100	12.700	Pin Hub	Twin Core	303 Stainless Steel
		<i>0.250</i>	<i>1.562</i>	<i>1.500</i>	<i>0.187</i>	<i>0.437</i>	<i>0.500</i>			
# PDS040-030-06.35-AL-S	30	6.350	39.675	38.100	4.750	11.887	7.925	Split Hub	Twin Core	2024-T4 Aluminium
		<i>0.250</i>	<i>1.562</i>	<i>1.500</i>	<i>0.187</i>	<i>0.468</i>	<i>0.312</i>			
# PDS040-030-06.35-AL-P	30	6.350	39.675	38.100	4.750	11.100	12.700	Pin Hub	Twin Core	2024-T4 Aluminium
		<i>0.250</i>	<i>1.562</i>	<i>1.500</i>	<i>0.187</i>	<i>0.437</i>	<i>0.500</i>			
# PDS040-030-06.35-303-S	30	6.350	39.675	38.100	4.750	11.887	7.925	Split Hub	Twin Core	303 Stainless Steel
		<i>0.250</i>	<i>1.562</i>	<i>1.500</i>	<i>0.187</i>	<i>0.468</i>	<i>0.312</i>			
# PDS040-032-03.17-303-P	32	3.175	42.215	40.640	4.750	9.525	7.925	Pin Hub	Twin Core	303 Stainless Steel
		<i>0.125</i>	<i>1.662</i>	<i>1.600</i>	<i>0.187</i>	<i>0.375</i>	<i>0.312</i>			
# PDS040-032-03.17-AL-P	32	3.175	42.215	40.640	4.750	9.525	7.925	Pin Hub	Twin Core	2024-T4 Aluminium
		<i>0.125</i>	<i>1.662</i>	<i>1.600</i>	<i>0.187</i>	<i>0.375</i>	<i>0.312</i>			
# PDS040-032-04.00-303-P	32	4.000	42.200	40.600	4.800	10.300	9.500	Pin Hub	Twin Core	303 Stainless Steel
		<i>0.157</i>	<i>1.661</i>	<i>1.598</i>	<i>0.189</i>	<i>0.406</i>	<i>0.374</i>			

Indicates item not stocked at time of printing - Please enquire for lead time

E&OE Pricing and all details subject to change without notice - Copyright Miniature Bearings Australia Pty Ltd

MBA Size Listings are a guide to sizes only and must not be solely relied on for critical design information.

Sprockets - Posi-Drive - 4.00 mm Circular Pitch

Part Number	Teeth No.	Bore mm	Outside Diameter mm	Pitch Diameter mm	Face Width mm	Overall Length mm	Hub Diameter mm	Hub Configuration	Suit Belt Type	Material
		<i>inches</i>	<i>inches</i>	<i>inches</i>	<i>inches</i>	<i>inches</i>	<i>inches</i>			
# PDS040-032-04.00-AL-P	32	4.000	42.200	40.600	4.800	10.300	9.500	Pin Hub	Twin Core	2024-T4 Aluminium
		<i>0.157</i>	<i>1.661</i>	<i>1.598</i>	<i>0.189</i>	<i>0.406</i>	<i>0.374</i>			
# PDS040-032-04.76-AL-P	32	4.762	42.215	40.640	4.750	10.312	9.525	Pin Hub	Twin Core	2024-T4 Aluminium
		<i>0.187</i>	<i>1.662</i>	<i>1.600</i>	<i>0.187</i>	<i>0.406</i>	<i>0.375</i>			
# PDS040-032-04.76-303-P	32	4.762	42.215	40.640	4.750	10.312	9.525	Pin Hub	Twin Core	303 Stainless Steel
		<i>0.187</i>	<i>1.662</i>	<i>1.600</i>	<i>0.187</i>	<i>0.406</i>	<i>0.375</i>			
# PDS040-032-06.00-303-P	32	6.000	42.200	40.600	4.800	11.000	12.700	Pin Hub	Twin Core	303 Stainless Steel
		<i>0.236</i>	<i>1.661</i>	<i>1.598</i>	<i>0.189</i>	<i>0.433</i>	<i>0.500</i>			
# PDS040-032-06.00-AL-P	32	6.000	42.200	40.600	4.800	11.000	12.700	Pin Hub	Twin Core	2024-T4 Aluminium
		<i>0.236</i>	<i>1.661</i>	<i>1.598</i>	<i>0.189</i>	<i>0.433</i>	<i>0.500</i>			
# PDS040-032-06.35-303-P	32	6.350	42.215	40.640	4.750	11.100	12.700	Pin Hub	Twin Core	303 Stainless Steel
		<i>0.250</i>	<i>1.662</i>	<i>1.600</i>	<i>0.187</i>	<i>0.437</i>	<i>0.500</i>			
# PDS040-032-06.35-303-S	32	6.350	42.215	40.640	4.750	11.887	7.925	Split Hub	Twin Core	303 Stainless Steel
		<i>0.250</i>	<i>1.662</i>	<i>1.600</i>	<i>0.187</i>	<i>0.468</i>	<i>0.312</i>			
PDS040-032-06.35-AL-P	32	6.350	42.215	40.640	4.750	11.100	12.700	Pin Hub	Twin Core	2024-T4 Aluminium
		<i>0.250</i>	<i>1.662</i>	<i>1.600</i>	<i>0.187</i>	<i>0.437</i>	<i>0.500</i>			

Indicates item not stocked at time of printing - Please enquire for lead time

E&OE Pricing and all details subject to change without notice - Copyright Miniature Bearings Australia Pty Ltd

MBA Size Listings are a guide to sizes only and must not be solely relied on for critical design information.

Sprockets - Posi-Drive - 4.00 mm Circular Pitch

Part Number	Teeth No.	Bore mm	Outside Diameter mm	Pitch Diameter mm	Face Width mm	Overall Length mm	Hub Diameter mm	Hub Configuration	Suit Belt Type	Material
		<i>inches</i>	<i>inches</i>	<i>inches</i>	<i>inches</i>	<i>inches</i>	<i>inches</i>			
# PDS040-032-06.35-AL-S	32	6.350	42.215	40.640	4.750	11.887	7.925	Split Hub	Twin Core	2024-T4 Aluminium
		<i>0.250</i>	<i>1.662</i>	<i>1.600</i>	<i>0.187</i>	<i>0.468</i>	<i>0.312</i>			
# PDS040-035-03.17-303-P	35	3.175	46.025	44.450	4.750	9.525	7.925	Pin Hub	Twin Core	303 Stainless Steel
		<i>0.125</i>	<i>1.812</i>	<i>1.750</i>	<i>0.187</i>	<i>0.375</i>	<i>0.312</i>			
# PDS040-035-03.17-AL-P	35	3.175	46.025	44.450	4.750	9.525	7.925	Pin Hub	Twin Core	2024-T4 Aluminium
		<i>0.125</i>	<i>1.812</i>	<i>1.750</i>	<i>0.187</i>	<i>0.375</i>	<i>0.312</i>			
# PDS040-035-04.00-303-P	35	4.000	46.000	44.500	4.800	10.300	9.500	Pin Hub	Twin Core	303 Stainless Steel
		<i>0.157</i>	<i>1.811</i>	<i>1.752</i>	<i>0.189</i>	<i>0.406</i>	<i>0.374</i>			
# PDS040-035-04.00-AL-P	35	4.000	46.000	44.500	4.800	10.300	9.500	Pin Hub	Twin Core	2024-T4 Aluminium
		<i>0.157</i>	<i>1.811</i>	<i>1.752</i>	<i>0.189</i>	<i>0.406</i>	<i>0.374</i>			
# PDS040-035-04.76-303-P	35	4.762	46.025	44.450	4.750	10.312	9.525	Pin Hub	Twin Core	303 Stainless Steel
		<i>0.187</i>	<i>1.812</i>	<i>1.750</i>	<i>0.187</i>	<i>0.406</i>	<i>0.375</i>			
# PDS040-035-04.76-AL-P	35	4.762	46.025	44.450	4.750	10.312	9.525	Pin Hub	Twin Core	2024-T4 Aluminium
		<i>0.187</i>	<i>1.812</i>	<i>1.750</i>	<i>0.187</i>	<i>0.406</i>	<i>0.375</i>			
# PDS040-035-06.00-303-P	35	6.000	46.000	44.500	4.800	11.000	12.700	Pin Hub	Twin Core	303 Stainless Steel
		<i>0.236</i>	<i>1.811</i>	<i>1.752</i>	<i>0.189</i>	<i>0.433</i>	<i>0.500</i>			

Indicates item not stocked at time of printing - Please enquire for lead time

E&OE Pricing and all details subject to change without notice - Copyright Miniature Bearings Australia Pty Ltd

MBA Size Listings are a guide to sizes only and must not be solely relied on for critical design information.

Sprockets - Posi-Drive - 4.00 mm Circular Pitch

Part Number	Teeth No.	Bore mm	Outside Diameter mm	Pitch Diameter mm	Face Width mm	Overall Length mm	Hub Diameter mm	Hub Configuration	Suit Belt Type	Material
		<i>inches</i>	<i>inches</i>	<i>inches</i>	<i>inches</i>	<i>inches</i>	<i>inches</i>			
# PDS040-035-06.00-AL-P	35	6.000	46.000	44.500	4.800	11.000	12.700	Pin Hub	Twin Core	2024-T4 Aluminium
		<i>0.236</i>	<i>1.811</i>	<i>1.752</i>	<i>0.189</i>	<i>0.433</i>	<i>0.500</i>			
# PDS040-035-06.35-AL-S	35	6.350	46.025	44.450	4.750	11.887	7.925	Split Hub	Twin Core	2024-T4 Aluminium
		<i>0.250</i>	<i>1.812</i>	<i>1.750</i>	<i>0.187</i>	<i>0.468</i>	<i>0.312</i>			
# PDS040-035-06.35-303-P	35	6.350	46.025	44.450	4.750	11.100	12.700	Pin Hub	Twin Core	303 Stainless Steel
		<i>0.250</i>	<i>1.812</i>	<i>1.750</i>	<i>0.187</i>	<i>0.437</i>	<i>0.500</i>			
# PDS040-035-06.35-303-S	35	6.350	46.025	44.450	4.750	11.887	7.925	Split Hub	Twin Core	303 Stainless Steel
		<i>0.250</i>	<i>1.812</i>	<i>1.750</i>	<i>0.187</i>	<i>0.468</i>	<i>0.312</i>			
# PDS040-035-06.35-AL-P	35	6.350	46.025	44.450	4.750	11.100	12.700	Pin Hub	Twin Core	2024-T4 Aluminium
		<i>0.250</i>	<i>1.812</i>	<i>1.750</i>	<i>0.187</i>	<i>0.437</i>	<i>0.500</i>			
# PDS040-036-03.17-303-P	36	3.175	47.295	45.720	4.750	9.525	7.925	Pin Hub	Twin Core	303 Stainless Steel
		<i>0.125</i>	<i>1.862</i>	<i>1.800</i>	<i>0.187</i>	<i>0.375</i>	<i>0.312</i>			
# PDS040-036-03.17-AL-P	36	3.175	47.295	45.720	4.750	9.525	7.925	Pin Hub	Twin Core	2024-T4 Aluminium
		<i>0.125</i>	<i>1.862</i>	<i>1.800</i>	<i>0.187</i>	<i>0.375</i>	<i>0.312</i>			
# PDS040-036-04.00-303-P	36	4.000	47.300	45.700	4.800	10.300	9.500	Pin Hub	Twin Core	303 Stainless Steel
		<i>0.157</i>	<i>1.862</i>	<i>1.799</i>	<i>0.189</i>	<i>0.406</i>	<i>0.374</i>			

Indicates item not stocked at time of printing - Please enquire for lead time

E&OE Pricing and all details subject to change without notice - Copyright Miniature Bearings Australia Pty Ltd

MBA Size Listings are a guide to sizes only and must not be solely relied on for critical design information.

Sprockets - Posi-Drive - 4.00 mm Circular Pitch

Part Number	Teeth No.	Bore mm	Outside Diameter mm	Pitch Diameter mm	Face Width mm	Overall Length mm	Hub Diameter mm	Hub Configuration	Suit Belt Type	Material
		<i>inches</i>	<i>inches</i>	<i>inches</i>	<i>inches</i>	<i>inches</i>	<i>inches</i>			
# PDS040-036-04.00-AL-P	36	4.000	47.300	45.700	4.800	10.300	9.500	Pin Hub	Twin Core	2024-T4 Aluminium
		<i>0.157</i>	<i>1.862</i>	<i>1.799</i>	<i>0.189</i>	<i>0.406</i>	<i>0.374</i>			
# PDS040-036-04.76-303-P	36	4.762	47.295	45.720	4.750	10.312	9.525	Pin Hub	Twin Core	303 Stainless Steel
		<i>0.187</i>	<i>1.862</i>	<i>1.800</i>	<i>0.187</i>	<i>0.406</i>	<i>0.375</i>			
# PDS040-036-04.76-AL-P	36	4.762	47.295	45.720	4.750	10.312	9.525	Pin Hub	Twin Core	2024-T4 Aluminium
		<i>0.187</i>	<i>1.862</i>	<i>1.800</i>	<i>0.187</i>	<i>0.406</i>	<i>0.375</i>			
# PDS040-036-06.00-AL-P	36	6.000	47.300	45.700	4.800	11.000	12.700	Pin Hub	Twin Core	2024-T4 Aluminium
		<i>0.236</i>	<i>1.862</i>	<i>1.799</i>	<i>0.189</i>	<i>0.433</i>	<i>0.500</i>			
# PDS040-036-06.00-303-P	36	6.000	47.300	45.700	4.800	11.000	12.700	Pin Hub	Twin Core	303 Stainless Steel
		<i>0.236</i>	<i>1.862</i>	<i>1.799</i>	<i>0.189</i>	<i>0.433</i>	<i>0.500</i>			
# PDS040-036-06.35-AL-S	36	6.350	47.295	45.720	4.750	11.887	7.925	Split Hub	Twin Core	2024-T4 Aluminium
		<i>0.250</i>	<i>1.862</i>	<i>1.800</i>	<i>0.187</i>	<i>0.468</i>	<i>0.312</i>			
# PDS040-036-06.35-AL-P	36	6.350	47.295	45.720	4.750	11.100	12.700	Pin Hub	Twin Core	2024-T4 Aluminium
		<i>0.250</i>	<i>1.862</i>	<i>1.800</i>	<i>0.187</i>	<i>0.437</i>	<i>0.500</i>			
# PDS040-036-06.35-303-P	36	6.350	47.295	45.720	4.750	11.100	12.700	Pin Hub	Twin Core	303 Stainless Steel
		<i>0.250</i>	<i>1.862</i>	<i>1.800</i>	<i>0.187</i>	<i>0.437</i>	<i>0.500</i>			

Indicates item not stocked at time of printing - Please enquire for lead time

E&OE Pricing and all details subject to change without notice - Copyright Miniature Bearings Australia Pty Ltd

MBA Size Listings are a guide to sizes only and must not be solely relied on for critical design information.

Sprockets - Posi-Drive - 4.00 mm Circular Pitch

Part Number	Teeth No.	Bore mm	Outside Diameter mm	Pitch Diameter mm	Face Width mm	Overall Length mm	Hub Diameter mm	Hub Configuration	Suit Belt Type	Material
		<i>inches</i>	<i>inches</i>	<i>inches</i>	<i>inches</i>	<i>inches</i>	<i>inches</i>			
# PDS040-036-06.35-303-S	36	6.350	47.295	45.720	4.750	11.887	7.925	Split Hub	Twin Core	303 Stainless Steel
		<i>0.250</i>	<i>1.862</i>	<i>1.800</i>	<i>0.187</i>	<i>0.468</i>	<i>0.312</i>			
# PDS040-040-03.17-303-P	40	3.175	52.375	50.800	4.750	9.525	7.925	Pin Hub	Twin Core	303 Stainless Steel
		<i>0.125</i>	<i>2.062</i>	<i>2.000</i>	<i>0.187</i>	<i>0.375</i>	<i>0.312</i>			
# PDS040-040-03.17-AL-P	40	3.175	52.375	50.800	4.750	9.525	7.925	Pin Hub	Twin Core	2024-T4 Aluminium
		<i>0.125</i>	<i>2.062</i>	<i>2.000</i>	<i>0.187</i>	<i>0.375</i>	<i>0.312</i>			
# PDS040-040-04.00-303-P	40	4.000	52.400	50.800	4.800	10.300	9.500	Pin Hub	Twin Core	303 Stainless Steel
		<i>0.157</i>	<i>2.063</i>	<i>2.000</i>	<i>0.189</i>	<i>0.406</i>	<i>0.374</i>			
# PDS040-040-04.00-AL-P	40	4.000	52.400	50.800	4.800	10.300	9.500	Pin Hub	Twin Core	2024-T4 Aluminium
		<i>0.157</i>	<i>2.063</i>	<i>2.000</i>	<i>0.189</i>	<i>0.406</i>	<i>0.374</i>			
# PDS040-040-04.76-303-P	40	4.762	52.375	50.800	4.750	10.312	9.525	Pin Hub	Twin Core	303 Stainless Steel
		<i>0.187</i>	<i>2.062</i>	<i>2.000</i>	<i>0.187</i>	<i>0.406</i>	<i>0.375</i>			
# PDS040-040-04.76-AL-P	40	4.762	52.375	50.800	4.750	10.312	9.525	Pin Hub	Twin Core	2024-T4 Aluminium
		<i>0.187</i>	<i>2.062</i>	<i>2.000</i>	<i>0.187</i>	<i>0.406</i>	<i>0.375</i>			
# PDS040-040-06.00-303-P	40	6.000	52.400	50.800	4.800	11.000	12.700	Pin Hub	Twin Core	303 Stainless Steel
		<i>0.236</i>	<i>2.063</i>	<i>2.000</i>	<i>0.189</i>	<i>0.433</i>	<i>0.500</i>			

Indicates item not stocked at time of printing - Please enquire for lead time

E&OE Pricing and all details subject to change without notice - Copyright Miniature Bearings Australia Pty Ltd

MBA Size Listings are a guide to sizes only and must not be solely relied on for critical design information.

Sprockets - Posi-Drive - 4.00 mm Circular Pitch

Part Number	Teeth No.	Bore mm	Outside Diameter mm	Pitch Diameter mm	Face Width mm	Overall Length mm	Hub Diameter mm	Hub Configuration	Suit Belt Type	Material
		<i>inches</i>	<i>inches</i>	<i>inches</i>	<i>inches</i>	<i>inches</i>	<i>inches</i>			
# PDS040-040-06.00-AL-P	40	6.000	52.400	50.800	4.800	11.000	12.700	Pin Hub	Twin Core	2024-T4 Aluminium
		<i>0.236</i>	<i>2.063</i>	<i>2.000</i>	<i>0.189</i>	<i>0.433</i>	<i>0.500</i>			
# PDS040-040-06.35-303-P	40	6.350	52.375	50.800	4.750	11.100	12.700	Pin Hub	Twin Core	303 Stainless Steel
		<i>0.250</i>	<i>2.062</i>	<i>2.000</i>	<i>0.187</i>	<i>0.437</i>	<i>0.500</i>			
# PDS040-040-06.35-303-S	40	6.350	52.375	50.800	4.750	11.887	7.925	Split Hub	Twin Core	303 Stainless Steel
		<i>0.250</i>	<i>2.062</i>	<i>2.000</i>	<i>0.187</i>	<i>0.468</i>	<i>0.312</i>			
# PDS040-040-06.35-AL-P	40	6.350	52.375	50.800	4.750	11.100	12.700	Pin Hub	Twin Core	2024-T4 Aluminium
		<i>0.250</i>	<i>2.062</i>	<i>2.000</i>	<i>0.187</i>	<i>0.437</i>	<i>0.500</i>			
# PDS040-040-06.35-AL-S	40	6.350	52.375	50.800	4.750	11.887	7.925	Split Hub	Twin Core	2024-T4 Aluminium
		<i>0.250</i>	<i>2.062</i>	<i>2.000</i>	<i>0.187</i>	<i>0.468</i>	<i>0.312</i>			
# PDS040-045-03.17-303-P	45	3.175	58.725	57.150	4.750	9.525	7.925	Pin Hub	Twin Core	303 Stainless Steel
		<i>0.125</i>	<i>2.312</i>	<i>2.250</i>	<i>0.187</i>	<i>0.375</i>	<i>0.312</i>			
# PDS040-045-03.17-AL-P	45	3.175	58.725	57.150	4.750	9.525	7.925	Pin Hub	Twin Core	2024-T4 Aluminium
		<i>0.125</i>	<i>2.312</i>	<i>2.250</i>	<i>0.187</i>	<i>0.375</i>	<i>0.312</i>			
# PDS040-045-04.00-303-P	45	4.000	58.700	57.200	4.800	10.300	9.500	Pin Hub	Twin Core	303 Stainless Steel
		<i>0.157</i>	<i>2.311</i>	<i>2.252</i>	<i>0.189</i>	<i>0.406</i>	<i>0.374</i>			

Indicates item not stocked at time of printing - Please enquire for lead time

E&OE Pricing and all details subject to change without notice - Copyright Miniature Bearings Australia Pty Ltd

MBA Size Listings are a guide to sizes only and must not be solely relied on for critical design information.

Sprockets - Posi-Drive - 4.00 mm Circular Pitch

Part Number	Teeth No.	Bore mm	Outside Diameter mm	Pitch Diameter mm	Face Width mm	Overall Length mm	Hub Diameter mm	Hub Configuration	Suit Belt Type	Material
		<i>inches</i>	<i>inches</i>	<i>inches</i>	<i>inches</i>	<i>inches</i>	<i>inches</i>			
# PDS040-045-04.00-AL-P	45	4.000	58.700	57.200	4.800	10.300	9.500	Pin Hub	Twin Core	2024-T4 Aluminium
		<i>0.157</i>	<i>2.311</i>	<i>2.252</i>	<i>0.189</i>	<i>0.406</i>	<i>0.374</i>			
# PDS040-045-04.76-303-P	45	4.762	58.725	57.150	4.750	10.312	9.525	Pin Hub	Twin Core	303 Stainless Steel
		<i>0.187</i>	<i>2.312</i>	<i>2.250</i>	<i>0.187</i>	<i>0.406</i>	<i>0.375</i>			
# PDS040-045-04.76-AL-P	45	4.762	58.725	57.150	4.750	10.312	9.525	Pin Hub	Twin Core	2024-T4 Aluminium
		<i>0.187</i>	<i>2.312</i>	<i>2.250</i>	<i>0.187</i>	<i>0.406</i>	<i>0.375</i>			
# PDS040-045-06.00-303-P	45	6.000	58.700	57.200	4.800	11.000	12.700	Pin Hub	Twin Core	303 Stainless Steel
		<i>0.236</i>	<i>2.311</i>	<i>2.252</i>	<i>0.189</i>	<i>0.433</i>	<i>0.500</i>			
# PDS040-045-06.00-AL-P	45	6.000	58.700	57.200	4.800	11.000	12.700	Pin Hub	Twin Core	2024-T4 Aluminium
		<i>0.236</i>	<i>2.311</i>	<i>2.252</i>	<i>0.189</i>	<i>0.433</i>	<i>0.500</i>			
# PDS040-045-06.35-303-P	45	6.350	58.725	57.150	4.750	11.100	12.700	Pin Hub	Twin Core	303 Stainless Steel
		<i>0.250</i>	<i>2.312</i>	<i>2.250</i>	<i>0.187</i>	<i>0.437</i>	<i>0.500</i>			
# PDS040-045-06.35-AL-S	45	6.350	58.725	57.150	4.750	11.887	7.925	Split Hub	Twin Core	2024-T4 Aluminium
		<i>0.250</i>	<i>2.312</i>	<i>2.250</i>	<i>0.187</i>	<i>0.468</i>	<i>0.312</i>			
# PDS040-045-06.35-303-S	45	6.350	58.725	57.150	4.750	11.887	7.925	Split Hub	Twin Core	303 Stainless Steel
		<i>0.250</i>	<i>2.312</i>	<i>2.250</i>	<i>0.187</i>	<i>0.468</i>	<i>0.312</i>			

Indicates item not stocked at time of printing - Please enquire for lead time

E&OE Pricing and all details subject to change without notice - Copyright Miniature Bearings Australia Pty Ltd

MBA Size Listings are a guide to sizes only and must not be solely relied on for critical design information.

Sprockets - Posi-Drive - 4.00 mm Circular Pitch

Part Number	Teeth No.	Bore mm	Outside Diameter mm	Pitch Diameter mm	Face Width mm	Overall Length mm	Hub Diameter mm	Hub Configuration	Suit Belt Type	Material
		<i>inches</i>	<i>inches</i>	<i>inches</i>	<i>inches</i>	<i>inches</i>	<i>inches</i>			
# PDS040-045-06.35-AL-P	45	6.350	58.725	57.150	4.750	11.100	12.700	Pin Hub	Twin Core	2024-T4 Aluminium
		<i>0.250</i>	<i>2.312</i>	<i>2.250</i>	<i>0.187</i>	<i>0.437</i>	<i>0.500</i>			
# PDS040-050-04.76-303-P	50	4.762	65.075	63.500	4.750	10.312	9.525	Pin Hub	Twin Core	303 Stainless Steel
		<i>0.187</i>	<i>2.562</i>	<i>2.500</i>	<i>0.187</i>	<i>0.406</i>	<i>0.375</i>			
# PDS040-050-04.76-AL-P	50	4.762	65.075	63.500	4.750	10.312	9.525	Pin Hub	Twin Core	2024-T4 Aluminium
		<i>0.187</i>	<i>2.562</i>	<i>2.500</i>	<i>0.187</i>	<i>0.406</i>	<i>0.375</i>			
# PDS040-050-06.00-303-P	50	6.000	65.100	63.500	4.800	11.000	12.700	Pin Hub	Twin Core	303 Stainless Steel
		<i>0.236</i>	<i>2.563</i>	<i>2.500</i>	<i>0.189</i>	<i>0.433</i>	<i>0.500</i>			
# PDS040-050-06.00-AL-P	50	6.000	65.100	63.500	4.800	11.000	12.700	Pin Hub	Twin Core	2024-T4 Aluminium
		<i>0.236</i>	<i>2.563</i>	<i>2.500</i>	<i>0.189</i>	<i>0.433</i>	<i>0.500</i>			
# PDS040-050-06.35-AL-P	50	6.350	65.075	63.500	4.750	11.100	12.700	Pin Hub	Twin Core	2024-T4 Aluminium
		<i>0.250</i>	<i>2.562</i>	<i>2.500</i>	<i>0.187</i>	<i>0.437</i>	<i>0.500</i>			
# PDS040-050-06.35-303-P	50	6.350	65.075	63.500	4.750	11.100	12.700	Pin Hub	Twin Core	303 Stainless Steel
		<i>0.250</i>	<i>2.562</i>	<i>2.500</i>	<i>0.187</i>	<i>0.437</i>	<i>0.500</i>			
# PDS040-060-04.76-AL-P	60	4.762	77.775	76.200	4.750	10.312	9.525	Pin Hub	Twin Core	2024-T4 Aluminium
		<i>0.187</i>	<i>3.062</i>	<i>3.000</i>	<i>0.187</i>	<i>0.406</i>	<i>0.375</i>			

Indicates item not stocked at time of printing - Please enquire for lead time

E&OE Pricing and all details subject to change without notice - Copyright Miniature Bearings Australia Pty Ltd

MBA Size Listings are a guide to sizes only and must not be solely relied on for critical design information.

Sprockets - Posi-Drive - 4.00 mm Circular Pitch

Part Number	Teeth No.	Bore mm	Outside Diameter mm	Pitch Diameter mm	Face Width mm	Overall Length mm	Hub Diameter mm	Hub Configuration	Suit Belt Type	Material
		<i>inches</i>	<i>inches</i>	<i>inches</i>	<i>inches</i>	<i>inches</i>	<i>inches</i>			
# PDS040-060-04.76-303-P	60	4.762	77.775	76.200	4.750	10.312	9.525	Pin Hub	Twin Core	303 Stainless Steel
		<i>0.187</i>	<i>3.062</i>	<i>3.000</i>	<i>0.187</i>	<i>0.406</i>	<i>0.375</i>			
# PDS040-060-06.00-303-P	60	6.000	77.800	76.200	4.800	11.000	12.700	Pin Hub	Twin Core	303 Stainless Steel
		<i>0.236</i>	<i>3.063</i>	<i>3.000</i>	<i>0.189</i>	<i>0.433</i>	<i>0.500</i>			
# PDS040-060-06.00-AL-P	60	6.000	77.800	76.200	4.800	11.000	12.700	Pin Hub	Twin Core	2024-T4 Aluminium
		<i>0.236</i>	<i>3.063</i>	<i>3.000</i>	<i>0.189</i>	<i>0.433</i>	<i>0.500</i>			
# PDS040-060-06.35-303-P	60	6.350	77.775	76.200	4.750	11.100	12.700	Pin Hub	Twin Core	303 Stainless Steel
		<i>0.250</i>	<i>3.062</i>	<i>3.000</i>	<i>0.187</i>	<i>0.437</i>	<i>0.500</i>			
# PDS040-060-06.35-AL-P	60	6.350	77.775	76.200	4.750	11.100	12.700	Pin Hub	Twin Core	2024-T4 Aluminium
		<i>0.250</i>	<i>3.062</i>	<i>3.000</i>	<i>0.187</i>	<i>0.437</i>	<i>0.500</i>			
# PDS040-070-04.76-303-P	70	4.762	90.475	88.900	4.750	10.312	9.525	Pin Hub	Twin Core	303 Stainless Steel
		<i>0.187</i>	<i>3.562</i>	<i>3.500</i>	<i>0.187</i>	<i>0.406</i>	<i>0.375</i>			
# PDS040-070-04.76-AL-P	70	4.762	90.475	88.900	4.750	10.312	9.525	Pin Hub	Twin Core	2024-T4 Aluminium
		<i>0.187</i>	<i>3.562</i>	<i>3.500</i>	<i>0.187</i>	<i>0.406</i>	<i>0.375</i>			
# PDS040-070-06.00-303-P	70	6.000	90.500	88.900	4.800	11.000	12.700	Pin Hub	Twin Core	303 Stainless Steel
		<i>0.236</i>	<i>3.563</i>	<i>3.500</i>	<i>0.189</i>	<i>0.433</i>	<i>0.500</i>			

Indicates item not stocked at time of printing - Please enquire for lead time

E&OE Pricing and all details subject to change without notice - Copyright Miniature Bearings Australia Pty Ltd

MBA Size Listings are a guide to sizes only and must not be solely relied on for critical design information.

Sprockets - Posi-Drive - 4.00 mm Circular Pitch

Part Number	Teeth No.	Bore mm	Outside Diameter mm	Pitch Diameter mm	Face Width mm	Overall Length mm	Hub Diameter mm	Hub Configuration	Suit Belt Type	Material
		<i>inches</i>	<i>inches</i>	<i>inches</i>	<i>inches</i>	<i>inches</i>	<i>inches</i>			
# PDS040-070-06.00-AL-P	70	6.000	90.500	88.900	4.800	11.000	12.700	Pin Hub	Twin Core	2024-T4 Aluminium
		<i>0.236</i>	<i>3.563</i>	<i>3.500</i>	<i>0.189</i>	<i>0.433</i>	<i>0.500</i>			
# PDS040-070-06.35-AL-P	70	6.350	90.475	88.900	4.750	11.100	12.700	Pin Hub	Twin Core	2024-T4 Aluminium
		<i>0.250</i>	<i>3.562</i>	<i>3.500</i>	<i>0.187</i>	<i>0.437</i>	<i>0.500</i>			
# PDS040-070-06.35-303-P	70	6.350	90.475	88.900	4.750	11.100	12.700	Pin Hub	Twin Core	303 Stainless Steel
		<i>0.250</i>	<i>3.562</i>	<i>3.500</i>	<i>0.187</i>	<i>0.437</i>	<i>0.500</i>			
# PDS040-080-04.76-303-P	80	4.762	103.175	101.600	4.750	10.312	9.525	Pin Hub	Twin Core	303 Stainless Steel
		<i>0.187</i>	<i>4.062</i>	<i>4.000</i>	<i>0.187</i>	<i>0.406</i>	<i>0.375</i>			
# PDS040-080-04.76-AL-P	80	4.762	103.175	101.600	4.750	10.312	9.525	Pin Hub	Twin Core	2024-T4 Aluminium
		<i>0.187</i>	<i>4.062</i>	<i>4.000</i>	<i>0.187</i>	<i>0.406</i>	<i>0.375</i>			
# PDS040-080-06.00-303-P	80	6.000	103.200	101.600	4.800	11.000	12.700	Pin Hub	Twin Core	303 Stainless Steel
		<i>0.236</i>	<i>4.063</i>	<i>4.000</i>	<i>0.189</i>	<i>0.433</i>	<i>0.500</i>			
# PDS040-080-06.00-AL-P	80	6.000	103.200	101.600	4.800	11.000	12.700	Pin Hub	Twin Core	2024-T4 Aluminium
		<i>0.236</i>	<i>4.063</i>	<i>4.000</i>	<i>0.189</i>	<i>0.433</i>	<i>0.500</i>			
# PDS040-080-06.35-AL-P	80	6.350	103.175	101.600	4.750	11.100	12.700	Pin Hub	Twin Core	2024-T4 Aluminium
		<i>0.250</i>	<i>4.062</i>	<i>4.000</i>	<i>0.187</i>	<i>0.437</i>	<i>0.500</i>			

Indicates item not stocked at time of printing - Please enquire for lead time

E&OE Pricing and all details subject to change without notice - Copyright Miniature Bearings Australia Pty Ltd

MBA Size Listings are a guide to sizes only and must not be solely relied on for critical design information.

Sprockets - Posi-Drive - 4.00 mm Circular Pitch

Part Number	Teeth No.	Bore mm	Outside Diameter mm	Pitch Diameter mm	Face Width mm	Overall Length mm	Hub Diameter mm	Hub Configuration	Suit Belt Type	Material
		<i>inches</i>	<i>inches</i>	<i>inches</i>	<i>inches</i>	<i>inches</i>	<i>inches</i>			
# PDS040-080-06.35-303-P	80	6.350	103.175	101.600	4.750	11.100	12.700	Pin Hub	Twin Core	303 Stainless Steel
		<i>0.250</i>	<i>4.062</i>	<i>4.000</i>	<i>0.187</i>	<i>0.437</i>	<i>0.500</i>			

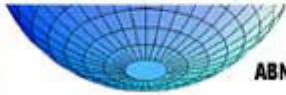
Indicates item not stocked at time of printing - Please enquire for lead time

E&OE Pricing and all details subject to change without notice - Copyright Miniature Bearings Australia Pty Ltd

MBA Size Listings are a guide to sizes only and must not be solely relied on for critical design information.

MBA

MINIATURE BEARINGS AUSTRALIA PTY LTD



ABN 94 069 113 800



DISTRIBUTED BY

Ask us to put your name and address here

<http://www.minibearings.com.au/product>

Ph +61 7 3245 7977

Fax +61 7 3245 1017

Catalogue requests to catalogues@minibearings.com.au

SDPSI
Stock Drive Products / Spring Instrument

JK

ANOTHER QUALITY PRODUCT BY
MOLYTEC
Australia

Origin
BEARING

WIB

THOMSON

EZO



myonic
solutions in microspace

rino



inox
Quality Products

GRW

DualVee^x
Bishop-Wisecarver Corp.

ondrives
Precision Manufacturing

RMB

SOLARBOTICS^{INTL}

KSK
BALL BEARING