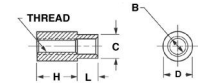




MBA

Standoffs - Round



Swage Type - Threaded - Brass or Stainless Steel.

Standoffs - Round

Part Number	Thread Size	Body Height (H)	Shank Length (L)	Panel Thickness	Shank Diameter (C)	Body Diameter (D)	Material	Inside Shank Diameter (B)
		mm	mm	mm	mm	mm		mm
		<i>inches</i>	<i>inches</i>	<i>inches</i>	<i>inches</i>	<i>inches</i>		<i>inches</i>
# SOR-2-56-03.18x1.91-BRZ	2-56	3.18 <i>0.125</i>	1.905 <i>0.075</i>	0.795 <i>0.031</i>	3.175 (+0.000/-0.076)	3.962 <i>0.156</i>	Brass / Zinc Plated	2.489 (+0.000/-0.076)
# SOR-2-56-03.18x2.67-BRZ	2-56	3.18 <i>0.125</i>	2.667 <i>0.105</i>	1.588 <i>0.063</i>	3.175 (+0.000/-0.076)	3.962 <i>0.156</i>	Brass / Zinc Plated	2.489 (+0.000/-0.076)
# SOR-2-56-03.18x3.43-BRZ	2-56	3.18 <i>0.125</i>	3.429 <i>0.135</i>	2.383 <i>0.094</i>	3.175 (+0.000/-0.076)	3.962 <i>0.156</i>	Brass / Zinc Plated	2.489 (+0.000/-0.076)
# SOR-2-56-03.18x4.19-BRZ	2-56	3.18 <i>0.125</i>	4.191 <i>0.165</i>	3.175 <i>0.125</i>	3.175 (+0.000/-0.076)	3.962 <i>0.156</i>	Brass / Zinc Plated	2.489 (+0.000/-0.076)

Indicates item not stocked at time of printing - Please enquire for lead time
 E&OE Pricing and all details subject to change without notice - Copyright Miniature Bearings Australia Pty Ltd
 MBA Size Listings are a guide to sizes only and must not be solely relied on for critical design information.

Standoffs - Round

Part Number	Thread Size	Body Height (H) mm <i>inches</i>	Shank Length (L) mm <i>inches</i>	Panel Thickness mm <i>inches</i>	Shank Diameter (C) mm <i>inches</i>	Body Diameter (D) mm <i>inches</i>	Material	Inside Shank Diameter (B) mm <i>inches</i>
# SOR-2-56-04.76x1.91-BRZ	2-56	4.76 <i>0.187</i>	1.905 <i>0.075</i>	0.795 <i>0.031</i>	3.175 (+0.000/-0.076) <i>0.125</i>	3.962 <i>0.156</i>	Brass / Zinc Plated	2.489 (+0.000/-0.076)
# SOR-2-56-04.76x2.67-BRZ	2-56	4.76 <i>0.187</i>	2.667 <i>0.105</i>	1.588 <i>0.063</i>	3.175 (+0.000/-0.076) <i>0.125</i>	3.962 <i>0.156</i>	Brass / Zinc Plated	2.489 (+0.000/-0.076)
# SOR-2-56-04.76x3.43-BRZ	2-56	4.76 <i>0.187</i>	3.429 <i>0.135</i>	2.383 <i>0.094</i>	3.175 (+0.000/-0.076) <i>0.125</i>	3.962 <i>0.156</i>	Brass / Zinc Plated	2.489 (+0.000/-0.076)
# SOR-2-56-04.76x4.19-BRZ	2-56	4.76 <i>0.187</i>	4.191 <i>0.165</i>	3.175 <i>0.125</i>	3.175 (+0.000/-0.076) <i>0.125</i>	3.962 <i>0.156</i>	Brass / Zinc Plated	2.489 (+0.000/-0.076)
# SOR-2-56-06.35x1.91-BRZ	2-56	6.35 <i>0.250</i>	1.905 <i>0.075</i>	0.795 <i>0.031</i>	3.175 (+0.000/-0.076) <i>0.125</i>	3.962 <i>0.156</i>	Brass / Zinc Plated	2.489 (+0.000/-0.076)
# SOR-2-56-06.35x2.67-BRZ	2-56	6.35 <i>0.250</i>	2.667 <i>0.105</i>	1.588 <i>0.063</i>	3.175 (+0.000/-0.076) <i>0.125</i>	3.962 <i>0.156</i>	Brass / Zinc Plated	2.489 (+0.000/-0.076)
# SOR-2-56-06.35x3.43-BRZ	2-56	6.35 <i>0.250</i>	3.429 <i>0.135</i>	2.383 <i>0.094</i>	3.175 (+0.000/-0.076) <i>0.125</i>	3.962 <i>0.156</i>	Brass / Zinc Plated	2.489 (+0.000/-0.076)
# SOR-2-56-06.35x4.19-BRZ	2-56	6.35 <i>0.250</i>	4.191 <i>0.165</i>	3.175 <i>0.125</i>	3.175 (+0.000/-0.076) <i>0.125</i>	3.962 <i>0.156</i>	Brass / Zinc Plated	2.489 (+0.000/-0.076)

Indicates item not stocked at time of printing - Please enquire for lead time

E&OE Pricing and all details subject to change without notice - Copyright Miniature Bearings Australia Pty Ltd

MBA Size Listings are a guide to sizes only and must not be solely relied on for critical design information.

Standoffs - Round

Part Number	Thread Size	Body Height (H) mm <i>inches</i>	Shank Length (L) mm <i>inches</i>	Panel Thickness mm <i>inches</i>	Shank Diameter (C) mm <i>inches</i>	Body Diameter (D) mm <i>inches</i>	Material	Inside Shank Diameter (B) mm <i>inches</i>
# SOR-2-56-09.53x1.91-BRZ	2-56	9.53 <i>0.375</i>	1.905 <i>0.075</i>	0.795 <i>0.031</i>	3.175 (+0.000/-0.076) <i>0.125</i>	3.962 <i>0.156</i>	Brass / Zinc Plated	2.489 (+0.000/-0.076)
# SOR-2-56-09.53x2.67-BRZ	2-56	9.53 <i>0.375</i>	2.667 <i>0.105</i>	1.588 <i>0.063</i>	3.175 (+0.000/-0.076) <i>0.125</i>	3.962 <i>0.156</i>	Brass / Zinc Plated	2.489 (+0.000/-0.076)
# SOR-2-56-09.53x3.43-BRZ	2-56	9.53 <i>0.375</i>	3.429 <i>0.135</i>	2.383 <i>0.094</i>	3.175 (+0.000/-0.076) <i>0.125</i>	3.962 <i>0.156</i>	Brass / Zinc Plated	2.489 (+0.000/-0.076)
# SOR-2-56-09.53x4.19-BRZ	2-56	9.53 <i>0.375</i>	4.191 <i>0.165</i>	3.175 <i>0.125</i>	3.175 (+0.000/-0.076) <i>0.125</i>	3.962 <i>0.156</i>	Brass / Zinc Plated	2.489 (+0.000/-0.076)
# SOR-2-56-12.70x1.91-BRZ	2-56	12.70 <i>0.500</i>	1.905 <i>0.075</i>	0.795 <i>0.031</i>	3.175 (+0.000/-0.076) <i>0.125</i>	3.962 <i>0.156</i>	Brass / Zinc Plated	2.489 (+0.000/-0.076)
# SOR-2-56-12.70x2.67-BRZ	2-56	12.70 <i>0.500</i>	2.667 <i>0.105</i>	1.588 <i>0.063</i>	3.175 (+0.000/-0.076) <i>0.125</i>	3.962 <i>0.156</i>	Brass / Zinc Plated	2.489 (+0.000/-0.076)
# SOR-2-56-12.70x3.43-BRZ	2-56	12.70 <i>0.500</i>	3.429 <i>0.135</i>	2.383 <i>0.094</i>	3.175 (+0.000/-0.076) <i>0.125</i>	3.962 <i>0.156</i>	Brass / Zinc Plated	2.489 (+0.000/-0.076)
# SOR-2-56-12.70x4.19-BRZ	2-56	12.70 <i>0.500</i>	4.191 <i>0.165</i>	3.175 <i>0.125</i>	3.175 (+0.000/-0.076) <i>0.125</i>	3.962 <i>0.156</i>	Brass / Zinc Plated	2.489 (+0.000/-0.076)

Indicates item not stocked at time of printing - Please enquire for lead time

E&OE Pricing and all details subject to change without notice - Copyright Miniature Bearings Australia Pty Ltd

MBA Size Listings are a guide to sizes only and must not be solely relied on for critical design information.

Standoffs - Round

Part Number	Thread Size	Body Height (H) mm <i>inches</i>	Shank Length (L) mm <i>inches</i>	Panel Thickness mm <i>inches</i>	Shank Diameter (C) mm <i>inches</i>	Body Diameter (D) mm <i>inches</i>	Material	Inside Shank Diameter (B) mm <i>inches</i>
# SOR-6-32-03.18x1.91-BRZ	6-32	3.18 <i>0.125</i>	1.905 <i>0.075</i>	0.795 <i>0.031</i>	4.775 (+0.000/-0.076) <i>0.187</i>	6.35 <i>0.250</i>	Brass / Zinc Plated	3.810 (+0.000/-0.076)
# SOR-6-32-03.18x2.67-BRZ	6-32	3.18 <i>0.125</i>	2.667 <i>0.105</i>	1.588 <i>0.063</i>	4.775 (+0.000/-0.076) <i>0.187</i>	6.35 <i>0.250</i>	Brass / Zinc Plated	3.810 (+0.000/-0.076)
# SOR-6-32-03.18x3.43-BRZ	6-32	3.18 <i>0.125</i>	3.429 <i>0.135</i>	2.383 <i>0.094</i>	4.775 (+0.000/-0.076) <i>0.187</i>	6.35 <i>0.250</i>	Brass / Zinc Plated	3.810 (+0.000/-0.076)
# SOR-6-32-03.18x4.19-BRZ	6-32	3.18 <i>0.125</i>	4.191 <i>0.165</i>	3.175 <i>0.125</i>	4.775 (+0.000/-0.076) <i>0.187</i>	6.35 <i>0.250</i>	Brass / Zinc Plated	3.810 (+0.000/-0.076)
# SOR-6-32-03.18x4.95-BRZ	6-32	3.18 <i>0.125</i>	4.953 <i>0.195</i>	3.962 <i>0.156</i>	4.775 (+0.000/-0.076) <i>0.187</i>	6.35 <i>0.250</i>	Brass / Zinc Plated	3.810 (+0.000/-0.076)
# SOR-6-32-03.18x5.84-BRZ	6-32	3.18 <i>0.125</i>	5.842 <i>0.230</i>	4.775 <i>0.188</i>	4.775 (+0.000/-0.076) <i>0.187</i>	6.35 <i>0.250</i>	Brass / Zinc Plated	3.810 (+0.000/-0.076)
# SOR-6-32-04.76x1.91-BRZ	6-32	4.76 <i>0.187</i>	1.905 <i>0.075</i>	0.795 <i>0.031</i>	4.775 (+0.000/-0.076) <i>0.187</i>	6.35 <i>0.250</i>	Brass / Zinc Plated	3.810 (+0.000/-0.076)
# SOR-6-32-04.76x2.67-BRZ	6-32	4.76 <i>0.187</i>	2.667 <i>0.105</i>	1.588 <i>0.063</i>	4.775 (+0.000/-0.076) <i>0.187</i>	6.35 <i>0.250</i>	Brass / Zinc Plated	3.810 (+0.000/-0.076)

Indicates item not stocked at time of printing - Please enquire for lead time

E&OE Pricing and all details subject to change without notice - Copyright Miniature Bearings Australia Pty Ltd

MBA Size Listings are a guide to sizes only and must not be solely relied on for critical design information.

Standoffs - Round

Part Number	Thread Size	Body Height (H) mm <i>inches</i>	Shank Length (L) mm <i>inches</i>	Panel Thickness mm <i>inches</i>	Shank Diameter (C) mm <i>inches</i>	Body Diameter (D) mm <i>inches</i>	Material	Inside Shank Diameter (B) mm <i>inches</i>
# SOR-6-32-04.76x3.43-BRZ	6-32	4.76 <i>0.187</i>	3.429 <i>0.135</i>	2.383 <i>0.094</i>	4.775 (+0.000/-0.076) <i>0.187</i>	6.35 <i>0.250</i>	Brass / Zinc Plated	3.810 (+0.000/-0.076) <i>0.150</i>
# SOR-6-32-04.76x4.19-BRZ	6-32	4.76 <i>0.187</i>	4.191 <i>0.165</i>	3.175 <i>0.125</i>	4.775 (+0.000/-0.076) <i>0.187</i>	6.35 <i>0.250</i>	Brass / Zinc Plated	3.810 (+0.000/-0.076) <i>0.150</i>
# SOR-6-32-04.76x4.95-BRZ	6-32	4.76 <i>0.187</i>	4.953 <i>0.195</i>	3.962 <i>0.156</i>	4.775 (+0.000/-0.076) <i>0.187</i>	6.35 <i>0.250</i>	Brass / Zinc Plated	3.810 (+0.000/-0.076) <i>0.150</i>
# SOR-6-32-04.76x5.84-BRZ	6-32	4.76 <i>0.187</i>	5.842 <i>0.230</i>	4.775 <i>0.188</i>	4.775 (+0.000/-0.076) <i>0.187</i>	6.35 <i>0.250</i>	Brass / Zinc Plated	3.810 (+0.000/-0.076) <i>0.150</i>
# SOR-6-32-06.35x1.91-BRZ	6-32	6.35 <i>0.250</i>	1.905 <i>0.075</i>	0.795 <i>0.031</i>	4.775 (+0.000/-0.076) <i>0.250</i>	6.35 <i>0.250</i>	Brass / Zinc Plated	3.810 (+0.000/-0.076) <i>0.150</i>
# SOR-6-32-06.35x2.67-BRZ	6-32	6.35 <i>0.250</i>	2.667 <i>0.105</i>	1.588 <i>0.063</i>	4.775 (+0.000/-0.076) <i>0.250</i>	6.35 <i>0.250</i>	Brass / Zinc Plated	3.810 (+0.000/-0.076) <i>0.150</i>
# SOR-6-32-06.35x3.43-BRZ	6-32	6.35 <i>0.250</i>	3.429 <i>0.135</i>	2.383 <i>0.094</i>	4.775 (+0.000/-0.076) <i>0.250</i>	6.35 <i>0.250</i>	Brass / Zinc Plated	3.810 (+0.000/-0.076) <i>0.150</i>
# SOR-6-32-06.35x4.19-BRZ	6-32	6.35 <i>0.250</i>	4.191 <i>0.165</i>	3.175 <i>0.125</i>	4.775 (+0.000/-0.076) <i>0.250</i>	6.35 <i>0.250</i>	Brass / Zinc Plated	3.810 (+0.000/-0.076) <i>0.150</i>

Indicates item not stocked at time of printing - Please enquire for lead time

E&OE Pricing and all details subject to change without notice - Copyright Miniature Bearings Australia Pty Ltd

MBA Size Listings are a guide to sizes only and must not be solely relied on for critical design information.

Standoffs - Round

Part Number	Thread Size	Body Height (H) mm <i>inches</i>	Shank Length (L) mm <i>inches</i>	Panel Thickness mm <i>inches</i>	Shank Diameter (C) mm <i>inches</i>	Body Diameter (D) mm <i>inches</i>	Material	Inside Shank Diameter (B) mm <i>inches</i>
# SOR-6-32-06.35x4.95-BRZ	6-32	6.35 <i>0.250</i>	4.953 <i>0.195</i>	3.962 <i>0.156</i>	4.775 (+0.000/-0.076) <i>0.188</i>	6.35 <i>0.250</i>	Brass / Zinc Plated	3.810 (+0.000/-0.076)
# SOR-6-32-06.35x5.84-BRZ	6-32	6.35 <i>0.250</i>	5.842 <i>0.230</i>	4.775 <i>0.188</i>	4.775 (+0.000/-0.076) <i>0.188</i>	6.35 <i>0.250</i>	Brass / Zinc Plated	3.810 (+0.000/-0.076)
# SOR-6-32-09.53x1.91-BRZ	6-32	9.53 <i>0.375</i>	1.905 <i>0.075</i>	0.795 <i>0.031</i>	4.775 (+0.000/-0.076) <i>0.031</i>	6.35 <i>0.250</i>	Brass / Zinc Plated	3.810 (+0.000/-0.076)
# SOR-6-32-09.53x2.67-BRZ	6-32	9.53 <i>0.375</i>	2.667 <i>0.105</i>	1.588 <i>0.063</i>	4.775 (+0.000/-0.076) <i>0.063</i>	6.35 <i>0.250</i>	Brass / Zinc Plated	3.810 (+0.000/-0.076)
# SOR-6-32-09.53x3.43-BRZ	6-32	9.53 <i>0.375</i>	3.429 <i>0.135</i>	2.383 <i>0.094</i>	4.775 (+0.000/-0.076) <i>0.094</i>	6.35 <i>0.250</i>	Brass / Zinc Plated	3.810 (+0.000/-0.076)
# SOR-6-32-09.53x4.19-BRZ	6-32	9.53 <i>0.375</i>	4.191 <i>0.165</i>	3.175 <i>0.125</i>	4.775 (+0.000/-0.076) <i>0.125</i>	6.35 <i>0.250</i>	Brass / Zinc Plated	3.810 (+0.000/-0.076)
# SOR-6-32-09.53x4.95-BRZ	6-32	9.53 <i>0.375</i>	4.953 <i>0.195</i>	3.962 <i>0.156</i>	4.775 (+0.000/-0.076) <i>0.156</i>	6.35 <i>0.250</i>	Brass / Zinc Plated	3.810 (+0.000/-0.076)
# SOR-6-32-09.53x5.84-BRZ	6-32	9.53 <i>0.375</i>	5.842 <i>0.230</i>	4.775 <i>0.188</i>	4.775 (+0.000/-0.076) <i>0.188</i>	6.35 <i>0.250</i>	Brass / Zinc Plated	3.810 (+0.000/-0.076)

Indicates item not stocked at time of printing - Please enquire for lead time

E&OE Pricing and all details subject to change without notice - Copyright Miniature Bearings Australia Pty Ltd

MBA Size Listings are a guide to sizes only and must not be solely relied on for critical design information.

Standoffs - Round

Part Number	Thread Size	Body Height (H) mm <i>inches</i>	Shank Length (L) mm <i>inches</i>	Panel Thickness mm <i>inches</i>	Shank Diameter (C) mm <i>inches</i>	Body Diameter (D) mm <i>inches</i>	Material	Inside Shank Diameter (B) mm <i>inches</i>
# SOR-6-32-12.70x1.91-BRZ	6-32	12.70 <i>0.500</i>	1.905 <i>0.075</i>	0.795 <i>0.031</i>	4.775 (+0.000/-0.076) <i>0.188</i>	6.35 <i>0.250</i>	Brass / Zinc Plated	3.810 (+0.000/-0.076) <i>0.150</i>
# SOR-6-32-12.70x2.67-BRZ	6-32	12.70 <i>0.500</i>	2.667 <i>0.105</i>	1.588 <i>0.063</i>	4.775 (+0.000/-0.076) <i>0.188</i>	6.35 <i>0.250</i>	Brass / Zinc Plated	3.810 (+0.000/-0.076) <i>0.150</i>
# SOR-6-32-12.70x3.43-BRZ	6-32	12.70 <i>0.500</i>	3.429 <i>0.135</i>	2.383 <i>0.094</i>	4.775 (+0.000/-0.076) <i>0.188</i>	6.35 <i>0.250</i>	Brass / Zinc Plated	3.810 (+0.000/-0.076) <i>0.150</i>
# SOR-6-32-12.70x4.19-BRZ	6-32	12.70 <i>0.500</i>	4.191 <i>0.165</i>	3.175 <i>0.125</i>	4.775 (+0.000/-0.076) <i>0.188</i>	6.35 <i>0.250</i>	Brass / Zinc Plated	3.810 (+0.000/-0.076) <i>0.150</i>
# SOR-6-32-12.70x4.95-BRZ	6-32	12.70 <i>0.500</i>	4.953 <i>0.195</i>	3.962 <i>0.156</i>	4.775 (+0.000/-0.076) <i>0.188</i>	6.35 <i>0.250</i>	Brass / Zinc Plated	3.810 (+0.000/-0.076) <i>0.150</i>
# SOR-6-32-12.70x5.84-BRZ	6-32	12.70 <i>0.500</i>	5.842 <i>0.230</i>	4.775 <i>0.188</i>	4.775 (+0.000/-0.076) <i>0.188</i>	6.35 <i>0.250</i>	Brass / Zinc Plated	3.810 (+0.000/-0.076) <i>0.150</i>

Indicates item not stocked at time of printing - Please enquire for lead time

E&OE Pricing and all details subject to change without notice - Copyright Miniature Bearings Australia Pty Ltd

MBA Size Listings are a guide to sizes only and must not be solely relied on for critical design information.



DISTRIBUTED BY

Ask us to put your name and address here

<http://www.minibearings.com.au/product>

Ph +61 7 3245 7977

Fax +61 7 3245 1017

Catalogue requests to catalogues@minibearings.com.au

