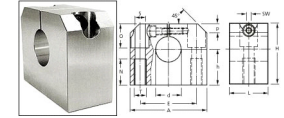




# MBA

## Supports - Block



For linear shafting.

Material: Aluminium.

### Supports - Block

Part Number	Suits Shaft Size (d) mm <i>inches</i>	Centre Height (h) mm <i>inches</i>	Height (H) mm <i>inches</i>	Length (A) mm <i>inches</i>	Width (L) mm <i>inches</i>	Thread (T)	Screw Length (N) mm <i>inches</i>
# WB58-012	12.0 <i>0.472</i>	19.0 <i>0.748</i>	33.0 <i>1.299</i>	40.0 <i>1.575</i>	18.0 <i>0.709</i>	M6	13.0 <i>0.512</i>
# WB57-012	12.0 <i>0.472</i>	20.0 <i>0.787</i>	35.0 <i>1.378</i>	42.0 <i>1.654</i>	20.0 <i>0.787</i>	M6	13.0 <i>0.512</i>
# WB58-016	16.0 <i>0.630</i>	22.0 <i>0.866</i>	38.0 <i>1.496</i>	45.0 <i>1.772</i>	20.0 <i>0.787</i>	M6	13.0 <i>0.512</i>
# WB57-016	16.0 <i>0.630</i>	25.0 <i>0.984</i>	42.0 <i>1.654</i>	52.0 <i>2.047</i>	24.0 <i>0.945</i>	M8	18.0 <i>0.709</i>

# Indicates item not stocked at time of printing - Please enquire for lead time

E&OE Pricing and all details subject to change without notice - Copyright Miniature Bearings Australia Pty Ltd

MBA Size Listings are a guide to sizes only and must not be solely relied on for critical design information.

## Supports - Block

Part Number	Suits Shaft Size (d) mm <i>inches</i>	Centre Height (h) mm <i>inches</i>	Height (H) mm <i>inches</i>	Length (A) mm <i>inches</i>	Width (L) mm <i>inches</i>	Thread (T)	Screw Length (N) mm <i>inches</i>
# WB58-020	20.0 <i>0.787</i>	25.0 <i>0.984</i>	45.0 <i>1.772</i>	53.0 <i>2.087</i>	24.0 <i>0.945</i>	M8	18.0 <i>0.709</i>
# WB57-020	20.0 <i>0.787</i>	30.0 <i>1.181</i>	50.0 <i>1.969</i>	60.0 <i>2.362</i>	30.0 <i>1.181</i>	M10	22.0 <i>0.866</i>
# WB58-025	25.0 <i>0.984</i>	31.0 <i>1.220</i>	54.0 <i>2.126</i>	62.0 <i>2.441</i>	28.0 <i>1.102</i>	M10	22.0 <i>0.866</i>
# WB57-025	25.0 <i>0.984</i>	35.0 <i>1.378</i>	60.0 <i>2.362</i>	76.0 <i>2.992</i>	38.0 <i>1.496</i>	M12	26.0 <i>1.024</i>
# WB58-030	30.0 <i>1.181</i>	34.0 <i>1.339</i>	60.0 <i>2.362</i>	67.0 <i>2.638</i>	30.0 <i>1.181</i>	M10	22.0 <i>0.866</i>
# WB57-030	30.0 <i>1.181</i>	40.0 <i>1.575</i>	70.0 <i>2.756</i>	86.0 <i>3.386</i>	40.0 <i>1.575</i>	M12	26.0 <i>1.024</i>
# WB58-040	40.0 <i>1.575</i>	42.0 <i>1.654</i>	76.0 <i>2.992</i>	87.0 <i>3.425</i>	40.0 <i>1.575</i>	M12	26.0 <i>1.024</i>
# WB57-040	40.0 <i>1.575</i>	50.0 <i>1.969</i>	90.0 <i>3.543</i>	108.0 <i>4.252</i>	48.0 <i>1.890</i>	M16	34.0 <i>1.339</i>
# WB57-050	50.0 <i>1.969</i>	60.0 <i>2.362</i>	105.0 <i>4.134</i>	130.0 <i>5.118</i>	58.0 <i>2.283</i>	M20	43.0 <i>1.693</i>

# Indicates item not stocked at time of printing - Please enquire for lead time

E&OE Pricing and all details subject to change without notice - Copyright Miniature Bearings Australia Pty Ltd

MBA Size Listings are a guide to sizes only and must not be solely relied on for critical design information.



DISTRIBUTED BY

Ask us to put your name and address here

<http://www.minibearings.com.au/product>

Ph +61 7 3245 7977

Fax +61 7 3245 1017

Catalogue requests to [catalogues@minibearings.com.au](mailto:catalogues@minibearings.com.au)

