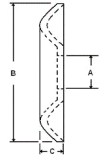




MBA

Washers - Cup - Stainless Steel



For countersunk screws.

Stainless Steel cup washers.

Washers - Cup - Stainless Steel

Part Number	Size	Nom. ID (A) mm <i>inches</i>	Nom. OD (B) mm <i>inches</i>	Nom. Section (C) mm <i>inches</i>
# WC4-06	No.6	3.8 <i>0.150</i>	10.3 <i>0.406</i>	2.4 <i>0.094</i>
# WC4-08	No.8	4.7 <i>0.185</i>	12.7 <i>0.500</i>	2.4 <i>0.094</i>
WC4-10	No.10	5.5 <i>0.217</i>	14.3 <i>0.563</i>	2.8 <i>0.110</i>
# WC4-12	No.12	6.1 <i>0.240</i>	15.1 <i>0.594</i>	2.8 <i>0.110</i>

Indicates item not stocked at time of printing - Please enquire for lead time

E&OE Pricing and all details subject to change without notice - Copyright Miniature Bearings Australia Pty Ltd

MBA Size Listings are a guide to sizes only and must not be solely relied on for critical design information.

Washers - Cup - Stainless Steel

Part Number	Size	Nom. ID (A) mm	Nom. OD (B) mm	Nom. Section (C) mm
		<i>inches</i>	<i>inches</i>	<i>inches</i>
# WC4-14	No.14	7.0 <i>0.276</i>	15.9 <i>0.626</i>	3.2 <i>0.126</i>

Indicates item not stocked at time of printing - Please enquire for lead time
E&OE Pricing and all details subject to change without notice - Copyright Miniature Bearings Australia Pty Ltd
MBA Size Listings are a guide to sizes only and must not be solely relied on for critical design information.



DISTRIBUTED BY

Ask us to put your name and address here

<http://www.minibearings.com.au/product>

Ph +61 7 3245 7977

Fax +61 7 3245 1017

Catalogue requests to catalogues@minibearings.com.au

