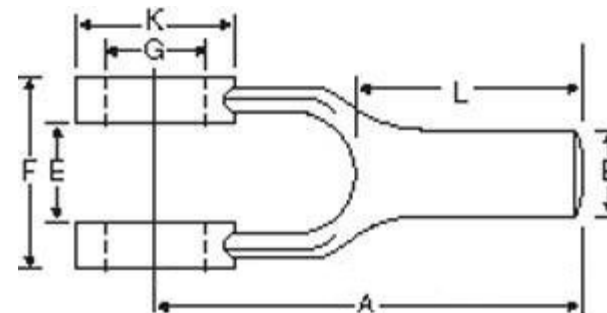




# MBA

## Yoke Ends - Blank



Linkage Connectors with blank ends - no hole

Drop forged steel machined to SAE standards

Also see clevis joints

This catalogue to be read in conjunction with information at  
<http://www.minibearings.com.au//partslist/pinsclevisplain/fasteners/wide/1/>

<http://www.minibearings.com.au//categories/clevis+joints/all/pics/>

<http://www.minibearings.com.au//categories/clevis+pins/all/pics/>

### Yoke Ends - Blank

Part Number	Effective Lgth (A) mm <i>inches</i>	Hub Diameter (B) mm <i>inches</i>	Gap (E) +/- 0.38 mm <i>inches</i>	Width (F) +/- 0.38 mm <i>inches</i>	Hole Size (G) +0.25 mm <i>inches</i>	Stud Height (L) mm <i>inches</i>	Housing Diameter (K) mm <i>inches</i>
# YE-12RS	44.450 <i>1.750</i>	6.350 <i>0.250</i>	7.140 <i>0.281</i>	7.14 <i>0.281</i>	6.35 <i>0.250</i>	24 <i>0.945</i>	13 <i>0.512</i>
# YE-13RS	50.800 <i>2.000</i>	7.940 <i>0.313</i>	8.730 <i>0.344</i>	8.73 <i>0.344</i>	7.94 <i>0.313</i>	27 <i>1.063</i>	15 <i>0.591</i>
# YE-14RS	53.980 <i>2.125</i>	9.530 <i>0.375</i>	11.110 <i>0.437</i>	11.11 <i>0.437</i>	9.53 <i>0.375</i>	25 <i>0.984</i>	17 <i>0.669</i>

# Indicates item not stocked at time of printing - Please enquire for lead time

E&OE Pricing and all details subject to change without notice - Copyright Miniature Bearings Australia Pty Ltd

MBA Size Listings are a guide to sizes only and must not be solely relied on for critical design information.

## Yoke Ends - Blank

Part Number	Effective Lgth (A) mm <i>inches</i>	Hub Diameter (B) mm <i>inches</i>	Gap (E) +/- 0.38 mm <i>inches</i>	Width (F) +/- 0.38 mm <i>inches</i>	Hole Size (G) +0.25 mm <i>inches</i>	Stud Height (L) mm <i>inches</i>	Housing Diameter (K) mm <i>inches</i>
# YE-15RS	57.150 <i>2.250</i>	11.110 <i>0.437</i>	12.700 <i>0.500</i>	12.70 <i>0.500</i>	11.11 <i>0.437</i>	24 <i>0.945</i>	21 <i>0.827</i>
# YE-16RS	63.500 <i>2.500</i>	12.700 <i>0.500</i>	14.290 <i>0.563</i>	14.29 <i>0.563</i>	12.70 <i>0.500</i>	25 <i>0.984</i>	24 <i>0.945</i>
# YE-17RS	73.030 <i>2.875</i>	15.880 <i>0.625</i>	17.460 <i>0.687</i>	17.46 <i>0.687</i>	15.88 <i>0.625</i>	29 <i>1.142</i>	30 <i>1.181</i>
# YE-18RS	92.080 <i>3.625</i>	19.050 <i>0.750</i>	20.640 <i>0.813</i>	20.64 <i>0.813</i>	19.05 <i>0.750</i>	38 <i>1.496</i>	37 <i>1.457</i>
# YE-20RS	152.400 <i>6.000</i>	25.400 <i>1.000</i>	26.990 <i>1.063</i>	26.99 <i>1.063</i>	25.40 <i>1.000</i>	76 <i>2.992</i>	49 <i>1.929</i>
# YE-16ARS	165.100 <i>6.500</i>	12.700 <i>0.500</i>	14.290 <i>0.563</i>	14.29 <i>0.563</i>	12.70 <i>0.500</i>	127 <i>5.000</i>	24 <i>0.945</i>

# Indicates item not stocked at time of printing - Please enquire for lead time

E&OE Pricing and all details subject to change without notice - Copyright Miniature Bearings Australia Pty Ltd

MBA Size Listings are a guide to sizes only and must not be solely relied on for critical design information.



DISTRIBUTED BY

Ask us to put your name and address here

<http://www.minibearings.com.au/product>

Ph +61 7 3245 7977

Fax +61 7 3245 1017

Catalogue requests to [catalogues@minibearings.com.au](mailto:catalogues@minibearings.com.au)
