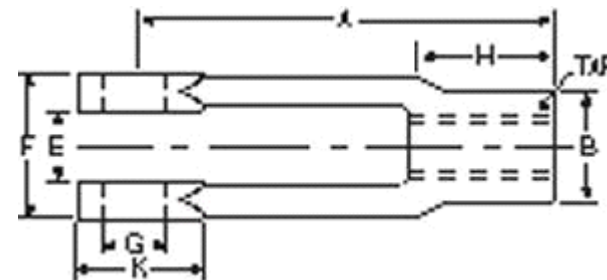




MBA

Yoke Ends - Threaded



Linkage Connectors

Drop forged steel machined to SAE standards

Also see clevis joints

This catalogue to be read in conjunction with information at
<http://www.minibearings.com.au//partslist/pinsclevisplain/fasteners/wide/1/>

<http://www.minibearings.com.au//categories/clevis+joints/all/pics/>

<http://www.minibearings.com.au//categories/clevis+pins/all/pics/>

Yoke Ends - Threaded

Part Number	Effective Lgth (A) mm <i>inches</i>	Hub Diameter (B) mm <i>inches</i>	Gap (E) +/- 0.38 mm <i>inches</i>	Width (F) +/- 0.38 mm <i>inches</i>	Hole Size (G) +0.25 mm <i>inches</i>	Stud Height (H) (+0.79) mm <i>inches</i>	Housing Diameter (K) mm <i>inches</i>	Thread Size
YE-2RS	50.800 <i>2.000</i>	11.110 <i>0.437</i>	7.140 <i>0.281</i>	15.88 <i>0.625</i>	6.35 <i>0.250</i>	19 <i>0.748</i>	13 <i>0.512</i>	46844
YE-3RS	57.150 <i>2.250</i>	12.700 <i>0.500</i>	8.730 <i>0.344</i>	19.05 <i>0.750</i>	7.94 <i>0.313</i>	21 <i>0.827</i>	15 <i>0.591</i>	5/16-24
YE-4RS	63.500 <i>2.500</i>	15.880 <i>0.625</i>	11.110 <i>0.437</i>	22.23 <i>0.875</i>	9.53 <i>0.375</i>	22 <i>0.866</i>	17 <i>0.669</i>	45507

Indicates item not stocked at time of printing - Please enquire for lead time

E&OE Pricing and all details subject to change without notice - Copyright Miniature Bearings Australia Pty Ltd

MBA Size Listings are a guide to sizes only and must not be solely relied on for critical design information.

Yoke Ends - Threaded

Part Number	Effective Lgth (A) mm <i>inches</i>	Hub Diameter (B) mm <i>inches</i>	Gap (E) +/- 0.38 mm <i>inches</i>	Width (F) +/- 0.38 mm <i>inches</i>	Hole Size (G) +0.25 mm <i>inches</i>	Stud Height (H) (+0.79) mm <i>inches</i>	Housing Diameter (K) mm <i>inches</i>	Thread Size
YE-5RS	73.030 <i>2.875</i>	18.260 <i>0.719</i>	12.700 <i>0.500</i>	25.40 <i>1.000</i>	11.11 <i>0.437</i>	25 <i>0.984</i>	21 <i>0.827</i>	7/16-20
YE-6RS	76.200 <i>3.000</i>	20.640 <i>0.813</i>	14.290 <i>0.563</i>	28.58 <i>1.125</i>	12.70 <i>0.500</i>	29 <i>1.142</i>	24 <i>0.945</i>	43862
# YE-8SPRS	101.600 <i>4.000</i>	28.580 <i>1.125</i>	17.460 <i>0.687</i>	38.10 <i>1.500</i>	15.88 <i>0.625</i>	32 <i>1.260</i>	35 <i>1.378</i>	40271
# YE-6BRS	106.360 <i>4.187</i>	20.640 <i>0.813</i>	14.290 <i>0.563</i>	28.58 <i>1.125</i>	12.70 <i>0.500</i>	29 <i>1.142</i>	24 <i>0.945</i>	43862
# YE-7RS	125.410 <i>4.937</i>	26.990 <i>1.063</i>	17.460 <i>0.687</i>	34.93 <i>1.375</i>	15.88 <i>0.625</i>	32 <i>1.260</i>	30 <i>1.181</i>	43317

Indicates item not stocked at time of printing - Please enquire for lead time

E&OE Pricing and all details subject to change without notice - Copyright Miniature Bearings Australia Pty Ltd

MBA Size Listings are a guide to sizes only and must not be solely relied on for critical design information.



DISTRIBUTED BY

Ask us to put your name and address here

<http://www.minibearings.com.au/product>

Ph +61 7 3245 7977

Fax +61 7 3245 1017

Catalogue requests to catalogues@minibearings.com.au

