



Mounts - Cylindrical - Female to Blank

9/4/2018

Indicates item not stocked at time of printing - Please enquire for lead time

E&OE Pricing and all details subject to change without notice - Copyright Miniature Bearings Australia Pty Ltd

MBA Size Listings are a guide to sizes only and must not be solely relied on for critical design information.

INFORMATION

Rubber hardness 60 Duro Standard unless otherwise noted. Vibration dampening

This catalogue to be read in conjunction with information at http://www.minibearings.com.au/ogue/tech/mounts/cylindrical_mounts_neoprene.pdf

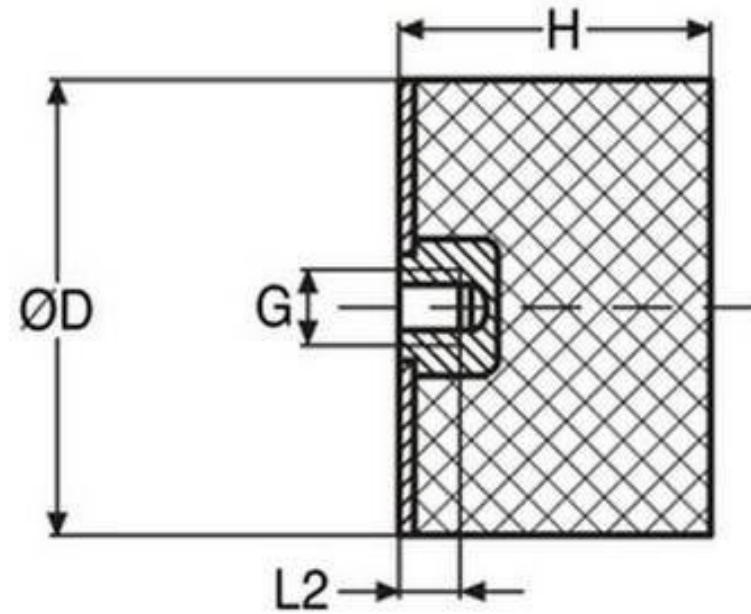
http://www.minibearings.com.au/ogue/tech/mounts/cylindrical_mounts_urethane.pdf

http://www.minibearings.com.au/ogue/tech/mounts/cylindrical_mounts_rubber.pdf

Indicates item not stocked at time of printing - Please enquire for lead time

E&OE Pricing and all details subject to change without notice - Copyright Miniature Bearings Australia Pty Ltd

MBA Size Listings are a guide to sizes only and must not be solely relied on for critical design information.



Indicates item not stocked at time of printing - Please enquire for lead time

E&OE Pricing and all details subject to change without notice - Copyright Miniature Bearings Australia Pty Ltd

MBA Size Listings are a guide to sizes only and must not be solely relied on for critical design information.

Mounts - Cylindrical - Female to Blank

Part Number	Nom. Body Dia. (D) mm <i>inches</i>	Body Length (H) mm <i>inches</i>	Configuration	Compression Load kgf (lbs)	Shear Load kgf (lbs)	Thread Size	Thread Depth (L2) mm <i>inches</i>	Material	Other Information
# CFB-007-08-0285C-L	7 <i>0.276</i>	8.1 <i>0.319</i>		0.13 (0.3)	0.04 (0.1)	4-40 UNC	- / 2.8	Urethane / Plated Steel	
# CFB-007-08-0285C-H	7 <i>0.276</i>	8.1 <i>0.319</i>		0.89 (2.0)	0.36 (0.8)	4-40 UNC	- / 2.8	Urethane / Plated Steel	
# CFB-010-10-M04	10 <i>0.394</i>	10 <i>0.394</i>		4.5 (10.08)		M4	4 <i>0.157</i>	Natural Rubber / Steel	
# CFB-010-15-M04	10 <i>0.394</i>	15 <i>0.591</i>		4 (8.96)		M4	4 <i>0.157</i>	Natural Rubber / Steel	
# CFB-010-13-0350C-H	10.3 <i>0.406</i>	12.7 <i>0.500</i>		1.79 (4.0)	0.89 (2.0)	6-32 UNC	- / 4.1	Urethane / Plated Steel	
# CFB-010-13-0350C-L	10.3 <i>0.406</i>	12.7 <i>0.500</i>		0.27 (0.6)	0.13 (0.3)	6-32 UNC	- / 4.1	Urethane / Plated Steel	
# CFB-010-13-0417C-H	10.3 <i>0.406</i>	12.7 <i>0.500</i>		1.79 (4.0)	0.89 (2.0)	8-32 UNC	- / 4.1	Urethane / Plated Steel	
# CFB-010-13-0417C-L	10.3 <i>0.406</i>	12.7 <i>0.500</i>		0.27 (0.6)	0.13 (0.3)	8-32 UNC	- / 4.1	Urethane / Plated Steel	

Indicates item not stocked at time of printing - Please enquire for lead time

E&OE Pricing and all details subject to change without notice - Copyright Miniature Bearings Australia Pty Ltd

MBA Size Listings are a guide to sizes only and must not be solely relied on for critical design information.

Mounts - Cylindrical - Female to Blank

Part Number	Nom. Body Dia. (D) mm <i>inches</i>	Body Length (H) mm <i>inches</i>	Configuration	Compression Load kgf (lbs)	Shear Load kgf (lbs)	Thread Size	Thread Depth (L2) mm <i>inches</i>	Material	Other Information
# CFB-015-15-M04	15 <i>0.591</i>	15 <i>0.591</i>		8 (17.92)		M4	5 <i>0.197</i>	Natural Rubber / Steel	
CFB-016-16-0635C	16 <i>0.630</i>	16 <i>0.630</i>		5.36 (12.0)	1.56 (3.5)	1/4 UNC (20 TPI)	- / 6.6	Urethane / Plated Steel	
CFB-020-15-M06	20 <i>0.787</i>	15 <i>0.591</i>		18 (40.32)		M6	6 <i>0.236</i>	Natural Rubber / Steel	
# CFB-020-20-M06	20 <i>0.787</i>	20 <i>0.787</i>		18 (40.32)		M6	6 <i>0.236</i>	Natural Rubber / Steel	
# CFB-025-10-M06	25 <i>0.984</i>	10 <i>0.394</i>		41 (91.84)		M6	6 <i>0.236</i>	Natural Rubber / Steel	
# CFB-025-19-0793C	25 <i>0.984</i>	19 <i>0.748</i>		20.09 (45.0)	4.46 (10.0)	5/16	- / 7.4	Urethane / Plated Steel	
# CFB-025-20-M06	25 <i>0.984</i>	20 <i>0.787</i>		29 (64.96)		M6	6 <i>0.236</i>	Natural Rubber / Steel	
# CFB-025-30-M06	25 <i>0.984</i>	30 <i>1.181</i>		25 (56)		M6	6 <i>0.236</i>	Natural Rubber / Steel	

Indicates item not stocked at time of printing - Please enquire for lead time

E&OE Pricing and all details subject to change without notice - Copyright Miniature Bearings Australia Pty Ltd

MBA Size Listings are a guide to sizes only and must not be solely relied on for critical design information.

Mounts - Cylindrical - Female to Blank

Part Number	Nom. Body Dia. (D) mm <i>inches</i>	Body Length (H) mm <i>inches</i>	Configuration	Compression Load kgf (lbs)	Shear Load kgf (lbs)	Thread Size	Thread Depth (L2) mm <i>inches</i>	Material	Other Information
# CFB-030-15-M08	30 <i>1.181</i>	15 <i>0.591</i>		48 (107.52)		M8	8 <i>0.315</i>	Natural Rubber / Steel	
# CFB-030-17-M08	30 <i>1.181</i>	17 <i>0.669</i>		45 (100)		M8	8 <i>0.315</i>	Natural Rubber / Steel	
# CFB-030-20-M08	30 <i>1.181</i>	20 <i>0.787</i>		45 (100.8)		M8	8 <i>0.315</i>	Natural Rubber / Steel	
# CFB-030-30-M08	30 <i>1.181</i>	30 <i>1.181</i>		41 (91.84)		M8	8 <i>0.315</i>	Natural Rubber / Steel	
# CFB-040-30-M08	40 <i>1.575</i>	30 <i>1.181</i>		85 (190.4)		M8	8 <i>0.315</i>	Natural Rubber / Steel	
# CFB-050-20-M10	50 <i>1.969</i>	20 <i>0.787</i>		154 (346)		M10	10 <i>0.394</i>	Natural Rubber / Steel	
# CFB-050-30-M10	50 <i>1.969</i>	30 <i>1.181</i>		119 (266.56)		M10	10 <i>0.394</i>	Natural Rubber / Steel	
# CFB-050-40-M10	50 <i>1.969</i>	40 <i>1.575</i>		114 (255.36)		M10	10 <i>0.394</i>	Natural Rubber / Steel	

Indicates item not stocked at time of printing - Please enquire for lead time

E&OE Pricing and all details subject to change without notice - Copyright Miniature Bearings Australia Pty Ltd

MBA Size Listings are a guide to sizes only and must not be solely relied on for critical design information.

Mounts - Cylindrical - Female to Blank

Part Number	Nom. Body Dia. (D) mm	Body Length (H) mm	Configuration	Compression Load kgf (lbs)	Shear Load kgf (lbs)	Thread Size	Thread Depth (L2) mm	Material	Other Information
	<i>inches</i>	<i>inches</i>					<i>inches</i>		
# CFB-050-50-M10	50	50		118 (264.32)		M10	10	Natural Rubber / Steel	
	<i>1.969</i>	<i>1.969</i>					<i>0.394</i>		
# CFB-075-25-M12	75	25		368 (824.32)		M12	12	Natural Rubber / Steel	
	<i>2.953</i>	<i>0.984</i>					<i>0.472</i>		
# CFB-075-55-M12	75	55		301 (674.24)		M12	12	Natural Rubber / Steel	
	<i>2.953</i>	<i>2.165</i>					<i>0.472</i>		

Indicates item not stocked at time of printing - Please enquire for lead time

Page 7 of 7

E&OE Pricing and all details subject to change without notice - Copyright Miniature Bearings Australia Pty Ltd

MBA Size Listings are a guide to sizes only and must not be solely relied on for critical design information.

DISTRIBUTED BY

Distributed By:

