



# **Mounts - Cylindrical - Male to Blank - Flat Top**

9/4/2018

# Indicates item not stocked at time of printing - Please enquire for lead time

E&OE Pricing and all details subject to change without notice - Copyright Miniature Bearings Australia Pty Ltd

MBA Size Listings are a guide to sizes only and must not be solely relied on for critical design information.

## INFORMATION

Rubber hardness 60 Duro Standard unless otherwise noted. Vibration dampening

This catalogue to be read in conjunction with information at [http://www.minibearings.com.au/ogue/tech/mounts/cylindrical\\_mounts\\_neoprene.pdf](http://www.minibearings.com.au/ogue/tech/mounts/cylindrical_mounts_neoprene.pdf)

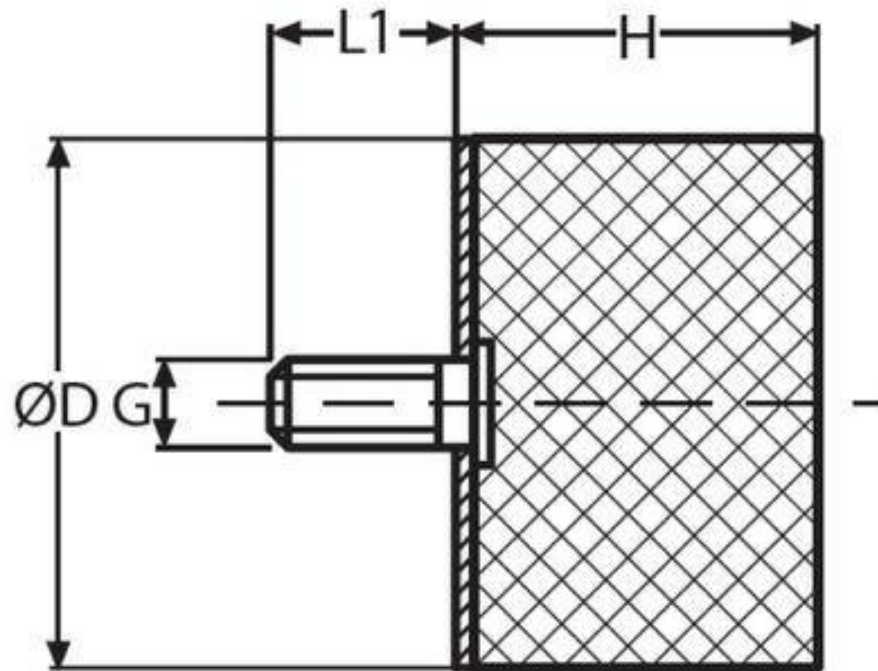
[http://www.minibearings.com.au/ogue/tech/mounts/cylindrical\\_mounts\\_urethane.pdf](http://www.minibearings.com.au/ogue/tech/mounts/cylindrical_mounts_urethane.pdf)

[http://www.minibearings.com.au/ogue/tech/mounts/cylindrical\\_mounts\\_rubber.pdf](http://www.minibearings.com.au/ogue/tech/mounts/cylindrical_mounts_rubber.pdf)

**# Indicates item not stocked at time of printing - Please enquire for lead time**

**E&OE Pricing and all details subject to change without notice - Copyright Miniature Bearings Australia Pty Ltd**

**MBA Size Listings are a guide to sizes only and must not be solely relied on for critical design information.**



# Indicates item not stocked at time of printing - Please enquire for lead time

E&OE Pricing and all details subject to change without notice - Copyright Miniature Bearings Australia Pty Ltd

MBA Size Listings are a guide to sizes only and must not be solely relied on for critical design information.

## Mounts - Cylindrical - Male to Blank - Flat Top

Part Number	Nom. Body Dia. (D) mm <i>inches</i>	Body Length (H) mm <i>inches</i>	Configuration	Compression Load kgf (lbs)	Shear Load kgf (lbs)	Thread Size	Thread Length (L1) mm <i>inches</i>	Material	Other Information
# CMB-007-08-0285C-L	7 <i>0.276</i>	8.1 <i>0.319</i>		0.22 (0.5)	0.09 (0.2)	4-40 UNC	5.1 <i>0.201</i>	Urethane / Plated Steel	
# CMB-007-08-0285C-H	7 <i>0.276</i>	8.1 <i>0.319</i>		1.79 (4.0)	0.67 (1.5)	4-40 UNC	5.1 <i>0.201</i>	Urethane / Plated Steel	
CMB-010-10-M04	10 <i>0.394</i>	10 <i>0.394</i>		5.4 (12.096)		M4	10 <i>0.394</i>	Natural Rubber / Steel	
# CMB-010-13-0350C-H	10.3 <i>0.406</i>	12.7 <i>0.500</i>		3.57 (8.0)	1.34 (3.0)	6-32 UNC	9.5 <i>0.374</i>	Urethane / Plated Steel	
# CMB-010-13-0350C-L	10.3 <i>0.406</i>	12.7 <i>0.500</i>		0.45 (1.0)	0.18 (0.4)	6-32 UNC	9.5 <i>0.374</i>	Urethane / Plated Steel	
# CMB-010-13-0417C-H	10.3 <i>0.406</i>	12.7 <i>0.500</i>		3.57 (8.0)	1.34 (3.0)	8-32 UNC	9.5 <i>0.374</i>	Urethane / Plated Steel	
# CMB-010-13-0417C-L	10.3 <i>0.406</i>	12.7 <i>0.500</i>		0.45 (1.0)	0.18 (0.4)	8-32 UNC	9.5 <i>0.374</i>	Urethane / Plated Steel	
# CMB-015-08-M04	15 <i>0.591</i>	8 <i>0.315</i>		14 (31.36)		M4	10 <i>0.394</i>	Natural Rubber / Steel	

# Indicates item not stocked at time of printing - Please enquire for lead time

E&OE Pricing and all details subject to change without notice - Copyright Miniature Bearings Australia Pty Ltd

MBA Size Listings are a guide to sizes only and must not be solely relied on for critical design information.

## Mounts - Cylindrical - Male to Blank - Flat Top

Part Number	Nom. Body Dia. (D) mm <i>inches</i>	Body Length (H) mm <i>inches</i>	Configuration	Compression Load kgf (lbs)	Shear Load kgf (lbs)	Thread Size	Thread Length (L1) mm <i>inches</i>	Material	Other Information
# CMB-015-10-M04	15 <i>0.591</i>	10 <i>0.394</i>		12 (26.88)		M4	10 <i>0.394</i>	Natural Rubber / Steel	
# CMB-015-15-M04	15 <i>0.591</i>	15 <i>0.591</i>		11 (24.64)		M4	10 <i>0.394</i>	Natural Rubber / Steel	
# CMB-016-16-0635C	16 <i>0.630</i>	16 <i>0.630</i>		8.93 (20.0)	2.23 (5.0)	1/4 UNC (20 TPI)	12.7 <i>0.500</i>	Urethane / Plated Steel	
CMB-020-15-M06	20 <i>0.787</i>	15 <i>0.591</i>		22 (49.28)		M6	18 <i>0.709</i>	Natural Rubber / Steel	
# CMB-020-20-M06	20 <i>0.787</i>	20 <i>0.787</i>		21 (47.04)		M6	18 <i>0.709</i>	Natural Rubber / Steel	
# CMB-020-25-M06	20 <i>0.787</i>	25 <i>0.984</i>		20 (44.8)		M6	18 <i>0.709</i>	Natural Rubber / Steel	
CMB-025-10-M06	25 <i>0.984</i>	10 <i>0.394</i>		48 (107.52)		M6	18 <i>0.709</i>	Natural Rubber / Steel	
# CMB-025-13-M06	25 <i>0.984</i>	13 <i>0.512</i>		22.680	2.627	M6x1.00	13.000 <i>0.512</i>	Rubber / Steel	

# Indicates item not stocked at time of printing - Please enquire for lead time

E&OE Pricing and all details subject to change without notice - Copyright Miniature Bearings Australia Pty Ltd

MBA Size Listings are a guide to sizes only and must not be solely relied on for critical design information.

## Mounts - Cylindrical - Male to Blank - Flat Top

Part Number	Nom. Body Dia. (D) mm <i>inches</i>	Body Length (H) mm <i>inches</i>	Configuration	Compression Load kgf (lbs)	Shear Load kgf (lbs)	Thread Size	Thread Length (L1) mm <i>inches</i>	Material	Other Information
# CMB-025-15-M06	25 <i>0.984</i>	15 <i>0.591</i>		37 (82.88)		M6	18 <i>0.709</i>	Natural Rubber / Steel	
# CMB-025-19-0793C	25 <i>0.984</i>	19 <i>0.748</i>		22.32 (50.0)	5.80 (13.0)	5/16	15.9 <i>0.626</i>	Urethane / Plated Steel	
# CMB-025-19-M06	25 <i>0.984</i>	19 <i>0.748</i>		22.680	1.576	M6x1.00	13.000 <i>0.512</i>	Rubber / Steel	
# CMB-025-20-M06	25 <i>0.984</i>	20 <i>0.787</i>		34 (76.16)		M6	18 <i>0.709</i>	Natural Rubber / Steel	
# CMB-025-25-M06	25 <i>0.984</i>	25 <i>0.984</i>		31 (69.44)		M6	18 <i>0.709</i>	Natural Rubber / Steel	
# CMB-025-25-M08	25 <i>0.984</i>	25 <i>0.984</i>		20.412	1.401	M8x1.25	16.000 <i>0.630</i>	Rubber / Steel	
# CMB-025-30-M06	25 <i>0.984</i>	30 <i>1.181</i>		28 (62.72)		M6	18 <i>0.709</i>	Natural Rubber / Steel	
# CMB-025-13-0635C	25.4 <i>1.000</i>	12.7 <i>0.500</i>		22.680	2.627	1/4 UNC (20 TPI)	12.700 <i>0.500</i>	Rubber / Steel	
# CMB-025-19-0635C	25.4 <i>1.000</i>	19.05 <i>0.750</i>		22.680	1.576	1/4 UNC (20 TPI)	12.700 <i>0.500</i>	Rubber / Steel	

# Indicates item not stocked at time of printing - Please enquire for lead time

E&OE Pricing and all details subject to change without notice - Copyright Miniature Bearings Australia Pty Ltd

MBA Size Listings are a guide to sizes only and must not be solely relied on for critical design information.

## Mounts - Cylindrical - Male to Blank - Flat Top

Part Number	Nom. Body Dia. (D) mm <i>inches</i>	Body Length (H) mm <i>inches</i>	Configuration	Compression Load kgf (lbs)	Shear Load kgf (lbs)	Thread Size	Thread Length (L1) mm <i>inches</i>	Material	Other Information
# CMB-025-25-0793C	25.4 <i>1.000</i>	25.4 <i>1.000</i>		20.412	1.401	5/16 UNC (18 TPI)	15.875 <i>0.625</i>	Rubber / Steel	
# CMB-030-20-M08	30 <i>1.181</i>	20 <i>0.787</i>		52 (116.48)		M8	20 <i>0.787</i>	Natural Rubber / Steel	
# CMB-030-25-M08	30 <i>1.181</i>	25 <i>0.984</i>		49 (109.76)		M8	20 <i>0.787</i>	Natural Rubber / Steel	
CMB-030-30-M08	30 <i>1.181</i>	30 <i>1.181</i>		47 (105.28)		M8	20 <i>0.787</i>	Natural Rubber / Steel	
# CMB-030-40-M08	30 <i>1.181</i>	40 <i>1.575</i>		42 (94.08)		M8	20 <i>0.787</i>	Natural Rubber / Steel	
CMB-038-19-M08	38 <i>1.496</i>	19 <i>0.748</i>		49.895	3.152	M8x1.25	16.000 <i>0.630</i>	Rubber / Steel	
# CMB-038-19-0793C	38.1 <i>1.500</i>	19.05 <i>0.750</i>		49.895	3.152	5/16 UNC (18 TPI)	15.875 <i>0.625</i>	Rubber / Steel	
# CMB-040-25-0793C	39.688 <i>1.563</i>	25.4 <i>1.000</i>		56.699	3.503	5/16 UNC (18 TPI)	15.875 <i>0.625</i>	Rubber / Steel	

# Indicates item not stocked at time of printing - Please enquire for lead time

E&OE Pricing and all details subject to change without notice - Copyright Miniature Bearings Australia Pty Ltd

MBA Size Listings are a guide to sizes only and must not be solely relied on for critical design information.

## Mounts - Cylindrical - Male to Blank - Flat Top

Part Number	Nom. Body Dia. (D) mm <i>inches</i>	Body Length (H) mm <i>inches</i>	Configuration	Compression Load kgf (lbs)	Shear Load kgf (lbs)	Thread Size	Thread Length (L1) mm <i>inches</i>	Material	Other Information
# CMB-040-25-0953C	39.688 <i>1.563</i>	25.4 <i>1.000</i>		56.699	3.503	3/8 UNC (16 TPI)	15.875 <i>0.625</i>	Rubber / Steel	
# CMB-040-20-M08	40 <i>1.575</i>	20 <i>0.787</i>		99 (221.76)		M8	23 <i>0.906</i>	Natural Rubber / Steel	
# CMB-040-25-M08	40 <i>1.575</i>	25 <i>0.984</i>		56.699	3.503	M8x1.25	16.000 <i>0.630</i>	Rubber / Steel	
# CMB-040-25-M10	40 <i>1.575</i>	25 <i>0.984</i>		56.699	3.503	M10x1.50	16.000 <i>0.630</i>	Rubber / Steel	
# CMB-040-30-M08	40 <i>1.575</i>	30 <i>1.181</i>		90 (201.6)		M8	23 <i>0.906</i>	Natural Rubber / Steel	
# CMB-040-30-M10	40 <i>1.575</i>	30 <i>1.181</i>		95 (212.8)		M10	28 <i>1.102</i>	Natural Rubber / Steel	
# CMB-040-40-M08	40 <i>1.575</i>	40 <i>1.575</i>		84 (188.16)		M8	23 <i>0.906</i>	Natural Rubber / Steel	
CMB-050-20-M10	50 <i>1.969</i>	20 <i>0.787</i>		190 (425.6)		M10	28 <i>1.102</i>	Natural Rubber / Steel	
# CMB-050-30-M10	50 <i>1.969</i>	30 <i>1.181</i>		149 (333.76)		M10	28 <i>1.102</i>	Natural Rubber / Steel	

# Indicates item not stocked at time of printing - Please enquire for lead time

Page 8 of 10

E&OE Pricing and all details subject to change without notice - Copyright Miniature Bearings Australia Pty Ltd

MBA Size Listings are a guide to sizes only and must not be solely relied on for critical design information.



## Mounts - Cylindrical - Male to Blank - Flat Top

Part Number	Nom. Body Dia. (D) mm <i>inches</i>	Body Length (H) mm <i>inches</i>	Configuration	Compression Load kgf (lbs)	Shear Load kgf (lbs)	Thread Size	Thread Length (L1) mm <i>inches</i>	Material	Other Information
# CMB-050-40-M10	50 <i>1.969</i>	40 <i>1.575</i>		137 (306.88)		M10	28 <i>1.102</i>	Natural Rubber / Steel	
# CMB-050-45-M10	50 <i>1.969</i>	45 <i>1.772</i>		134 (300.16)		M10	28 <i>1.102</i>	Natural Rubber / Steel	
# CMB-050-50-M10	50 <i>1.969</i>	50 <i>1.969</i>		129 (288.96)		M10	28 <i>1.102</i>	Natural Rubber / Steel	
# CMB-051-19-0953C	50.8 <i>2.000</i>	19.05 <i>0.750</i>		167.829	15.761	3/8 UNC (16 TPI)	28.575 <i>1.125</i>	Rubber / Steel	
# CMB-051-41-0953C	50.8 <i>2.000</i>	41.275 <i>1.625</i>		74.843	9.632	3/8 UNC (16 TPI)	15.875 <i>0.625</i>	Rubber / Steel	
# CMB-051-19-M10	51 <i>2.008</i>	19 <i>0.748</i>		167.829	15.761	M10x1.50	29.000 <i>1.142</i>	Rubber / Steel	
# CMB-051-41-M10	51 <i>2.008</i>	41 <i>1.614</i>		74.843	9.632	M10x1.50	16.000 <i>0.630</i>	Rubber / Steel	
# CMB-060-40-M10	60 <i>2.362</i>	40 <i>1.575</i>		145 (324.8)		M10	28 <i>1.102</i>	Natural Rubber / Steel	
# CMB-060-40-M12	60 <i>2.362</i>	40 <i>1.575</i>		152 (340.48)		M12	33 <i>1.299</i>	Natural Rubber / Steel	

# Indicates item not stocked at time of printing - Please enquire for lead time

E&OE Pricing and all details subject to change without notice - Copyright Miniature Bearings Australia Pty Ltd  
MBA Size Listings are a guide to sizes only and must not be solely relied on for critical design information.

## Mounts - Cylindrical - Male to Blank - Flat Top

Part Number	Nom. Body Dia. (D) mm <i>inches</i>	Body Length (H) mm <i>inches</i>	Configuration	Compression Load kgf (lbs)	Shear Load kgf (lbs)	Thread Size	Thread Length (L1) mm <i>inches</i>	Material	Other Information
# CMB-070-45-M10	70 <i>2.756</i>	45 <i>1.772</i>		262 (586.88)		M10	28 <i>1.102</i>	Natural Rubber / Steel	
# CMB-075-25-M12	75 <i>2.953</i>	25 <i>0.984</i>		389 (871.36)		M12	37 <i>1.457</i>	Natural Rubber / Steel	
# CMB-075-40-M12	75 <i>2.953</i>	40 <i>1.575</i>		354 (792.96)		M12	37 <i>1.457</i>	Natural Rubber / Steel	
# CMB-075-50-M12	75 <i>2.953</i>	50 <i>1.969</i>		325 (728)		M12	37 <i>1.457</i>	Natural Rubber / Steel	
# CMB-075-55-M12	75 <i>2.953</i>	55 <i>2.165</i>		318 (712.32)		M12	37 <i>1.457</i>	Natural Rubber / Steel	
# CMB-100-50-M16	100 <i>3.937</i>	50 <i>1.969</i>		482 (1079.68)		M16	41 <i>1.614</i>	Natural Rubber / Steel	
# CMB-100-55-M16	100 <i>3.937</i>	55 <i>2.165</i>		476 (1066.24)		M16	41 <i>1.614</i>	Natural Rubber / Steel	

# Indicates item not stocked at time of printing - Please enquire for lead time

E&OE Pricing and all details subject to change without notice - Copyright Miniature Bearings Australia Pty Ltd

MBA Size Listings are a guide to sizes only and must not be solely relied on for critical design information.

DISTRIBUTED BY

Distributed By:

