



Mounts - Leveling - 303 Stainless - Industrial - With Elastomer Pad

9/4/2018

Indicates item not stocked at time of printing - Please enquire for lead time

E&OE Pricing and all details subject to change without notice - Copyright Miniature Bearings Australia Pty Ltd

MBA Size Listings are a guide to sizes only and must not be solely relied on for critical design information.

INFORMATION

These industrial mounts are an excellent and inexpensive solution for light duty applications such as office furniture, shelving, point of sale displays, cabinetry and small machinery. Adjusters.

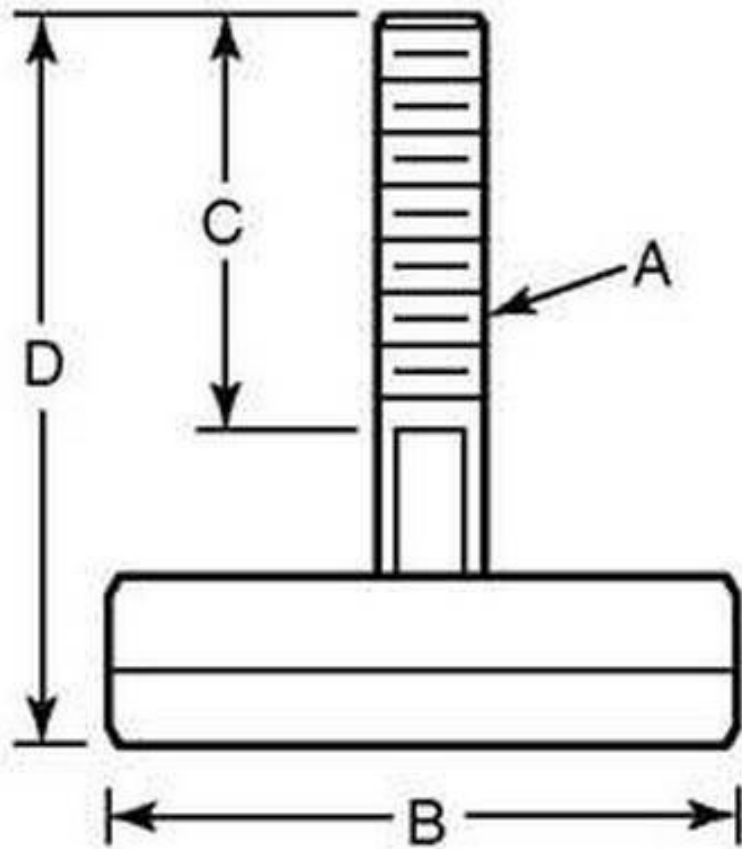
303 Stainless Steel

Elastomer pad for non skid applications.

Indicates item not stocked at time of printing - Please enquire for lead time

E&OE Pricing and all details subject to change without notice - Copyright Miniature Bearings Australia Pty Ltd

MBA Size Listings are a guide to sizes only and must not be solely relied on for critical design information.



Indicates item not stocked at time of printing - Please enquire for lead time

E&OE Pricing and all details subject to change without notice - Copyright Miniature Bearings Australia Pty Ltd

MBA Size Listings are a guide to sizes only and must not be solely relied on for critical design information.

Mounts - Leveling - 303 Stainless - Industrial - With Elastomer Pad

Part Number	Max Load Kg	Thread A	Base Diameter (B) mm <i>inches</i>	Thread Length (C) mm <i>inches</i>	Total Height (D) mm <i>inches</i>	Pad Material	Base Material
# MLV-0110-0635C-030-32-E	110	1/4-20 UNC (6.350mm)	30.480 <i>1.200</i>	38.100 <i>1.500</i>	57.150 <i>2.250</i>	Elastomer	Stainless Steel
# MLV-0110-1270C-061-32-E	110	1/2-13 UNC (12.700mm)	60.960 <i>2.400</i>	101.600 <i>4.000</i>	127.000 <i>5.000</i>	Elastomer	Stainless Steel
# MLV-0110-0953C-052-32-E	110	3/8-16 UNC (9.525mm)	51.562 <i>2.030</i>	50.800 <i>2.000</i>	76.200 <i>3.000</i>	Elastomer	Stainless Steel
# MLV-0110-0953C-061-32-E1	110	3/8-16 UNC (9.525mm)	60.960 <i>2.400</i>	101.600 <i>4.000</i>	127.000 <i>5.000</i>	Elastomer	Stainless Steel
# MLV-0110-0953C-061-32-E2	110	3/8-16 UNC (9.525mm)	60.960 <i>2.400</i>	50.800 <i>2.000</i>	76.200 <i>3.000</i>	Elastomer	Stainless Steel
# MLV-0110-0793C-030-32-E	110	5/16-18 UNC (7.938mm)	30.480 <i>1.200</i>	38.100 <i>1.500</i>	57.150 <i>2.250</i>	Elastomer	Stainless Steel
# MLV-0110-0793C-052-32-E	110	5/16-18 UNC (7.938mm)	51.562 <i>2.030</i>	50.800 <i>2.000</i>	76.200 <i>3.000</i>	Elastomer	Stainless Steel
# MLV-0230-1270C-071-32-E2	230	1/2-13 UNC (12.700mm)	71.120 <i>2.800</i>	50.800 <i>2.000</i>	77.788 <i>3.063</i>	Elastomer	Stainless Steel

Indicates item not stocked at time of printing - Please enquire for lead time

E&OE Pricing and all details subject to change without notice - Copyright Miniature Bearings Australia Pty Ltd
MBA Size Listings are a guide to sizes only and must not be solely relied on for critical design information.

Mounts - Leveling - 303 Stainless - Industrial - With Elastomer Pad

Part Number	Max Load Kg	Thread A	Base Diameter (B) mm	Thread Length (C) mm	Total Height (D) mm	Pad Material	Base Material
			<i>inches</i>	<i>inches</i>	<i>inches</i>		
# MLV-0230-1270C-071-32-E1	230	1/2-13 UNC (12.700mm)	71.120 <i>2.800</i>	101.600 <i>4.000</i>	128.588 <i>5.063</i>	Elastomer	Stainless Steel
# MLV-0230-1270C-081-32-E	230	1/2-13 UNC (12.700mm)	80.950 <i>3.187</i>	152.400 <i>6.000</i>	180.975 <i>7.125</i>	Elastomer	Stainless Steel
# MLV-0230-1590C-071-32-E	230	5/8-11 UNC (15.875mm)	71.120 <i>2.800</i>	101.600 <i>4.000</i>	128.588 <i>5.063</i>	Elastomer	Stainless Steel
# MLV-0230-1590C-081-32-E1	230	5/8-11 UNC (15.875mm)	80.950 <i>3.187</i>	101.600 <i>4.000</i>	130.175 <i>5.125</i>	Elastomer	Stainless Steel
# MLV-0230-1590C-081-32-E2	230	5/8-11 UNC (15.875mm)	80.950 <i>3.187</i>	152.400 <i>6.000</i>	180.975 <i>7.125</i>	Elastomer	Stainless Steel

Indicates item not stocked at time of printing - Please enquire for lead time

E&OE Pricing and all details subject to change without notice - Copyright Miniature Bearings Australia Pty Ltd
MBA Size Listings are a guide to sizes only and must not be solely relied on for critical design information.

DISTRIBUTED BY

Distributed By:

