



# **Mounts - Leveling - Socket Type - Steel - Black Chromate - With Pad**

9/4/2018

# Indicates item not stocked at time of printing - Please enquire for lead time

E&OE Pricing and all details subject to change without notice - Copyright Miniature Bearings Australia Pty Ltd

MBA Size Listings are a guide to sizes only and must not be solely relied on for critical design information.

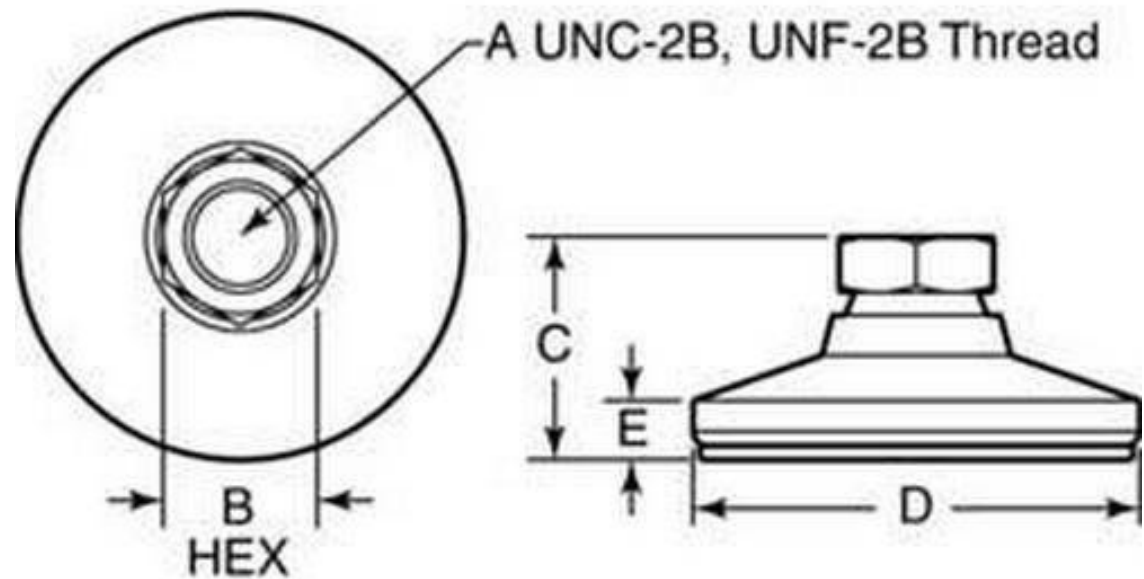
## INFORMATION

15<sup>0</sup> swivel off centreline to adjust to uneven surfaces and level machine tools, electronic racks and benches. Adjusters.

# Indicates item not stocked at time of printing - Please enquire for lead time

E&OE Pricing and all details subject to change without notice - Copyright Miniature Bearings Australia Pty Ltd

MBA Size Listings are a guide to sizes only and must not be solely relied on for critical design information.



# Indicates item not stocked at time of printing - Please enquire for lead time

E&OE Pricing and all details subject to change without notice - Copyright Miniature Bearings Australia Pty Ltd

MBA Size Listings are a guide to sizes only and must not be solely relied on for critical design information.

## Mounts - Leveling - Socket Type - Steel - Black Chromate - With Pad

Part Number	Load Kg	Thread Size	Min.Thread Depth mm	Hex Flats (B) mm	Foot Height (C) mm	Base Diameter (D) mm	Base Height (E) mm	Finish	Pad Material	Pad Thickness
			<i>inches</i>	<i>inches</i>	<i>inches</i>	<i>inches</i>	<i>inches</i>			
# MLV-0240-0476F-SB	240	10-32 UNF (4.762mm)	4.318 <i>0.170</i>	9.525 <i>0.375</i>	16.760 <i>0.660</i>	19.050 <i>0.750</i>	6.100 <i>0.240</i>	Black Chromate	Elastomer	3.175
# MLV-0360-0635C-SB	360	1/4-20 UNC (6.350mm)	7.874 <i>0.310</i>	12.700 <i>0.500</i>	21.080 <i>0.830</i>	25.400 <i>1.000</i>	7.110 <i>0.280</i>	Black Chromate	Elastomer	3.175
# MLV-1270-0953C-SB	1270	3/8-16 UNC (9.525mm)	9.652 <i>0.380</i>	15.875 <i>0.625</i>	25.400 <i>1.000</i>	31.750 <i>1.250</i>	7.925 <i>0.312</i>	Black Chromate	Elastomer	3.175
# MLV-1700-1270C-SB	1700	1/2-13 UNC (12.700mm)	11.176 <i>0.440</i>	19.050 <i>0.750</i>	31.750 <i>1.250</i>	47.625 <i>1.875</i>	9.525 <i>0.375</i>	Black Chromate	Elastomer	3.175
# MLV-2450-1905C-SB	2450	3/4-10 UNC (19.050mm)	15.748 <i>0.620</i>	26.975 <i>1.062</i>	41.275 <i>1.625</i>	76.200 <i>3.000</i>	15.875 <i>0.625</i>	Black Chromate	Elastomer	3.175
# MLV-7440-2540C-SB	7440	1-8 UNC (25.400mm)	20.574 <i>0.810</i>	34.925 <i>1.375</i>	50.800 <i>2.000</i>	101.600 <i>4.000</i>	30.937 <i>1.218</i>	Black Chromate	Elastomer	3.175

# Indicates item not stocked at time of printing - Please enquire for lead time

E&OE Pricing and all details subject to change without notice - Copyright Miniature Bearings Australia Pty Ltd  
MBA Size Listings are a guide to sizes only and must not be solely relied on for critical design information.

DISTRIBUTED BY

Distributed By:

