



Mounts - Leveling - Stud Type - 316 Stainless Steel - Padded

9/4/2018

Indicates item not stocked at time of printing - Please enquire for lead time

E&OE Pricing and all details subject to change without notice - Copyright Miniature Bearings Australia Pty Ltd

MBA Size Listings are a guide to sizes only and must not be solely relied on for critical design information.

Page 1 of 6

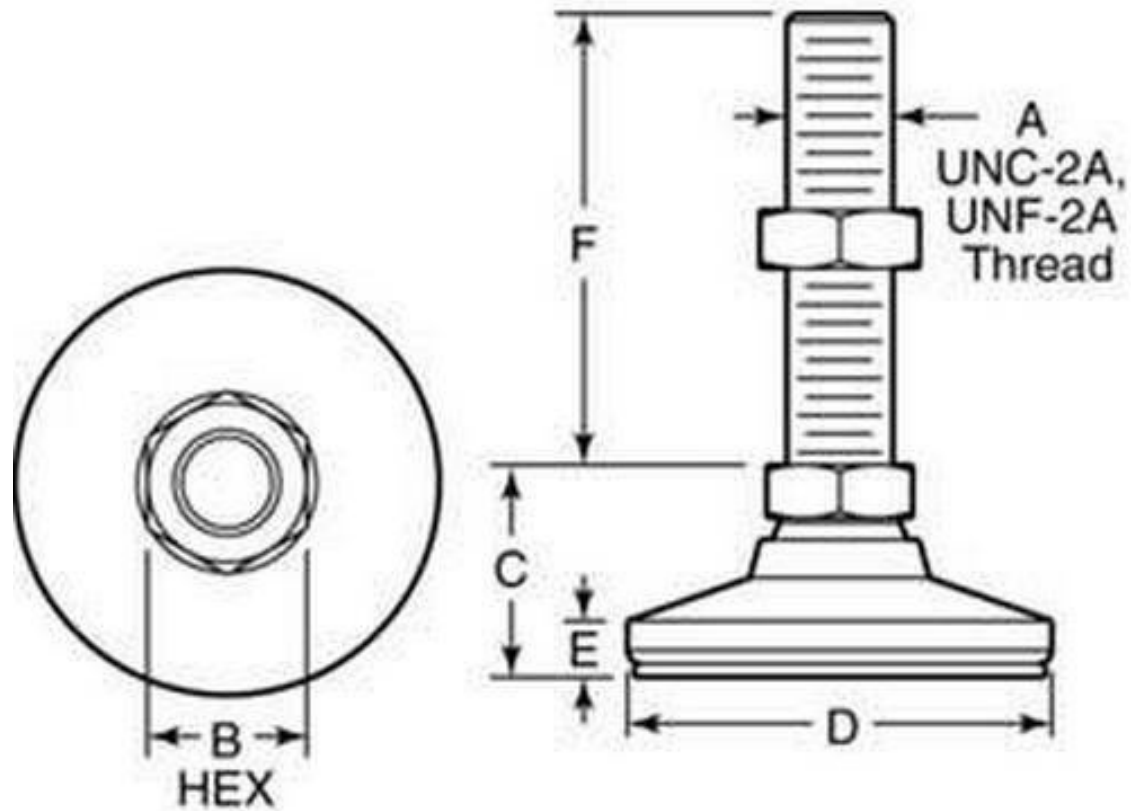
INFORMATION

15⁰ swivel off centreline to adjust to uneven surfaces and level machine tools, electronic racks and benches. Adjusters.

Indicates item not stocked at time of printing - Please enquire for lead time

E&OE Pricing and all details subject to change without notice - Copyright Miniature Bearings Australia Pty Ltd

MBA Size Listings are a guide to sizes only and must not be solely relied on for critical design information.



Indicates item not stocked at time of printing - Please enquire for lead time

E&OE Pricing and all details subject to change without notice - Copyright Miniature Bearings Australia Pty Ltd

MBA Size Listings are a guide to sizes only and must not be solely relied on for critical design information.

Mounts - Leveling - Stud Type - 316 Stainless Steel - Padded

Part Number	Load Kg	Thread Size	Hex Flats (B) mm	Foot Height (C) mm	Base Diameter (D) mm	Base Height (E) mm	Thread Height (F) mm	Finish	Pad Material	Pad Thickness mm
			<i>inches</i>	<i>inches</i>	<i>inches</i>	<i>inches</i>	<i>inches</i>			<i>inches</i>
# MLV-0110-M06-6P	110	M6.0x1.00 (6.00mm)	10.000	17.000	19.000	6.000	25.000	316 Stainless	Elastomer	3.175
			<i>0.394</i>	<i>0.669</i>	<i>0.748</i>	<i>0.236</i>	<i>0.984</i>			<i>0.125</i>
# MLV-0150-M08-6P	150	M8.0x1.25 (8.0mm)	12.000	21.000	25.000	7.000	32.000	316 Stainless	Elastomer	3.175
			<i>0.472</i>	<i>0.827</i>	<i>0.984</i>	<i>0.276</i>	<i>1.260</i>			<i>0.125</i>
# MLV-0240-0476F-6P-A	240	10-32 UNF (4.762mm)	9.525	16.669	19.050	5.953	50.800	316 Stainless	Elastomer	3.175
			<i>0.375</i>	<i>0.656</i>	<i>0.750</i>	<i>0.234</i>	<i>2.000</i>			<i>0.125</i>
# MLV-0240-0476F-6P-B	240	10-32 UNF (4.762mm)	9.525	16.669	19.050	5.953	25.400	316 Stainless	Elastomer	3.175
			<i>0.375</i>	<i>0.656</i>	<i>0.750</i>	<i>0.234</i>	<i>1.000</i>			<i>0.125</i>
# MLV-0340-0635C-6P-A	340	1/4-20 UNC (6.35mm)	12.700	21.034	25.400	7.144	63.500	316 Stainless	Elastomer	3.175
			<i>0.500</i>	<i>0.828</i>	<i>1.000</i>	<i>0.281</i>	<i>2.500</i>			<i>0.125</i>
# MLV-0340-0635C-6P-B	340	1/4-20 UNC (6.35mm)	12.700	21.034	25.400	7.144	31.750	316 Stainless	Elastomer	3.175
			<i>0.500</i>	<i>0.828</i>	<i>1.000</i>	<i>0.281</i>	<i>1.250</i>			<i>0.125</i>
# MLV-0580-M10-6P	580	M10.0x1.50 (10.0mm)	16.000	25.000	32.000	8.000	51.000	316 Stainless	Elastomer	3.175
			<i>0.630</i>	<i>0.984</i>	<i>1.260</i>	<i>0.315</i>	<i>2.008</i>			<i>0.125</i>
# MLV-0770-M12-6P	770	M12.0x1.75 (12.0mm)	20.000	32.000	48.000	10.000	51.000	316 Stainless	Elastomer	3.175
			<i>0.787</i>	<i>1.260</i>	<i>1.890</i>	<i>0.394</i>	<i>2.008</i>			<i>0.125</i>

Indicates item not stocked at time of printing - Please enquire for lead time

E&OE Pricing and all details subject to change without notice - Copyright Miniature Bearings Australia Pty Ltd
MBA Size Listings are a guide to sizes only and must not be solely relied on for critical design information.

Mounts - Leveling - Stud Type - 316 Stainless Steel - Padded

Part Number	Load Kg	Thread Size	Hex Flats (B) mm	Foot Height (C) mm	Base Diameter (D) mm	Base Height (E) mm	Thread Height (F) mm	Finish	Pad Material	Pad Thickness mm
			<i>inches</i>	<i>inches</i>	<i>inches</i>	<i>inches</i>	<i>inches</i>			<i>inches</i>
# MLV-0930-M16-6P	930	M16.0x2.00 (16.0mm)	22.000	35.000	64.000	11.000	51.000	316 Stainless	Elastomer	3.175
			<i>0.866</i>	<i>1.378</i>	<i>2.520</i>	<i>0.433</i>	<i>2.008</i>			<i>0.125</i>
# MLV-1140-M20-6P	1140	M20.0x2.50 (20.0mm)	27.000	41.000	76.000	16.000	51.000	316 Stainless	Elastomer	3.175
			<i>1.063</i>	<i>1.614</i>	<i>2.992</i>	<i>0.630</i>	<i>2.008</i>			<i>0.125</i>
# MLV-1270-0953C-6P-B	1270	3/8-16 UNC (9.525mm)	15.875	25.400	31.750	7.938	50.800	316 Stainless	Elastomer	3.175
			<i>0.625</i>	<i>1.000</i>	<i>1.250</i>	<i>0.313</i>	<i>2.000</i>			<i>0.125</i>
# MLV-1270-0953C-6P-A	1270	3/8-16 UNC (9.525mm)	15.875	25.400	31.750	7.938	101.600	316 Stainless	Elastomer	3.175
			<i>0.625</i>	<i>1.000</i>	<i>1.250</i>	<i>0.313</i>	<i>4.000</i>			<i>0.125</i>
# MLV-1700-1270C-6P-A	1700	1/2-13 UNC (12.7mm)	19.050	31.750	47.625	9.525	101.600	316 Stainless	Elastomer	3.175
			<i>0.750</i>	<i>1.250</i>	<i>1.875</i>	<i>0.375</i>	<i>4.000</i>			<i>0.125</i>
# MLV-1700-1270C-6P-B	1700	1/2-13 UNC (12.7mm)	19.050	31.750	47.625	9.525	50.800	316 Stainless	Elastomer	3.175
			<i>0.750</i>	<i>1.250</i>	<i>1.875</i>	<i>0.375</i>	<i>2.000</i>			<i>0.125</i>
# MLV-2040-1590C-6P-A	2040	5/8-11 UNC (15.875mm)	22.225	34.925	63.500	11.113	101.600	316 Stainless	Elastomer	3.175
			<i>0.875</i>	<i>1.375</i>	<i>2.500</i>	<i>0.438</i>	<i>4.000</i>			<i>0.125</i>
# MLV-2040-1590C-6P-B	2040	5/8-11 UNC (15.875mm)	22.225	34.925	63.500	11.113	50.800	316 Stainless	Elastomer	3.175
			<i>0.875</i>	<i>1.375</i>	<i>2.500</i>	<i>0.438</i>	<i>2.000</i>			<i>0.125</i>

Indicates item not stocked at time of printing - Please enquire for lead time

E&OE Pricing and all details subject to change without notice - Copyright Miniature Bearings Australia Pty Ltd
MBA Size Listings are a guide to sizes only and must not be solely relied on for critical design information.

Mounts - Leveling - Stud Type - 316 Stainless Steel - Padded

Part Number	Load Kg	Thread Size	Hex Flats (B) mm	Foot Height (C) mm	Base Diameter (D) mm	Base Height (E) mm	Thread Height (F) mm	Finish	Pad Material	Pad Thickness mm
			<i>inches</i>	<i>inches</i>	<i>inches</i>	<i>inches</i>	<i>inches</i>			<i>inches</i>
# MLV-2520-1905C-6P-A	2520	3/4-10 UNC (19.05mm)	26.988	41.275	76.200	15.875	50.800	316 Stainless	Elastomer	3.175
			<i>1.063</i>	<i>1.625</i>	<i>3.000</i>	<i>0.625</i>	<i>2.000</i>			<i>0.125</i>
# MLV-2520-1905C-6P-B	2520	3/4-10 UNC (19.05mm)	26.988	41.275	76.200	15.875	101.600	316 Stainless	Elastomer	3.175
			<i>1.063</i>	<i>1.625</i>	<i>3.000</i>	<i>0.625</i>	<i>4.000</i>			<i>0.125</i>
# MLV-3080-M24-6P-A	3080	M24.0x3.00 (24.0mm)	35.000	51.000	102.000	14.000	89.000	316 Stainless	Elastomer	3.175
			<i>1.378</i>	<i>2.008</i>	<i>4.016</i>	<i>0.551</i>	<i>3.504</i>			<i>0.125</i>
# MLV-3080-M24-6P-B	3080	M24.0x3.00 (24.0mm)	35.000	51.000	102.000	14.000	108.000	316 Stainless	Elastomer	3.175
			<i>1.378</i>	<i>2.008</i>	<i>4.016</i>	<i>0.551</i>	<i>4.252</i>			<i>0.125</i>
# MLV-6800-2540C-6P-B	6800	1-8 UNC (25.40mm)	47.625	50.800	101.600	13.494	107.950	316 Stainless	Elastomer	3.175
			<i>1.875</i>	<i>2.000</i>	<i>4.000</i>	<i>0.531</i>	<i>4.250</i>			<i>0.125</i>
# MLV-6800-2540C-6P-A	6800	1-8 UNC (25.40mm)	47.625	50.800	101.600	13.494	203.200	316 Stainless	Elastomer	3.175
			<i>1.875</i>	<i>2.000</i>	<i>4.000</i>	<i>0.531</i>	<i>8.000</i>			<i>0.125</i>

Indicates item not stocked at time of printing - Please enquire for lead time

Page 6 of 6

E&OE Pricing and all details subject to change without notice - Copyright Miniature Bearings Australia Pty Ltd
MBA Size Listings are a guide to sizes only and must not be solely relied on for critical design information.

DISTRIBUTED BY

Distributed By:

