



Mounts - Leveling - Stud Type - Gold Chromate

9/4/2018

Indicates item not stocked at time of printing - Please enquire for lead time

E&OE Pricing and all details subject to change without notice - Copyright Miniature Bearings Australia Pty Ltd

MBA Size Listings are a guide to sizes only and must not be solely relied on for critical design information.

Page 1 of 4

INFORMATION

For leveling machine tools, electronic racks, benches etc on uneven surfaces. Adjusters.

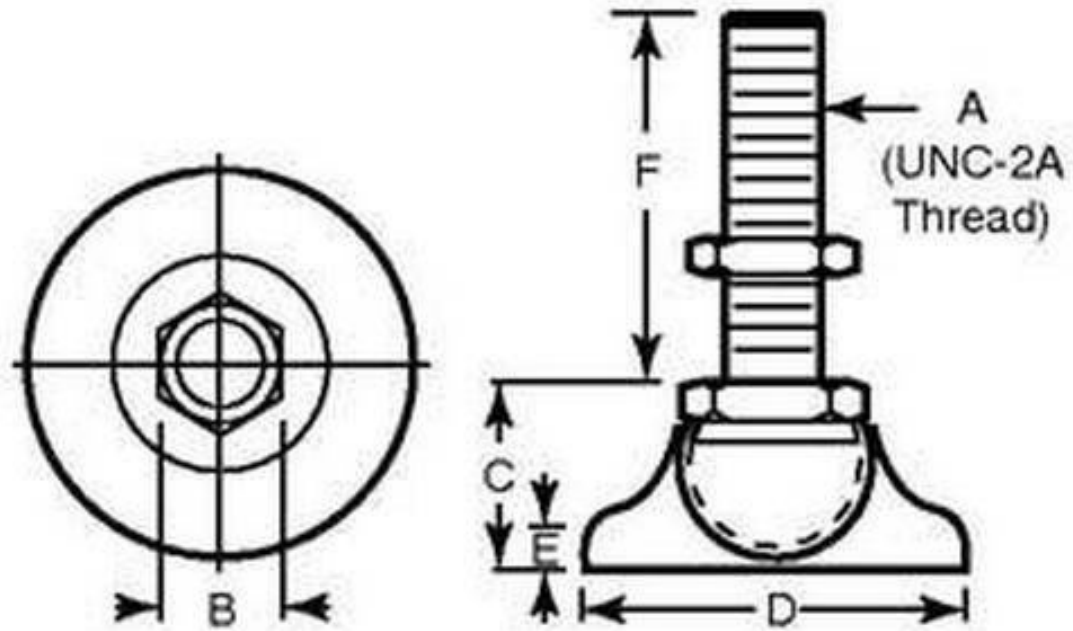
Load is distributed over 120^o of full radial contact rather than a single radial contact point, providing greater weight distribution between the ball and pad.

Zinc plated steel with case hardened ball.

Indicates item not stocked at time of printing - Please enquire for lead time

E&OE Pricing and all details subject to change without notice - Copyright Miniature Bearings Australia Pty Ltd

MBA Size Listings are a guide to sizes only and must not be solely relied on for critical design information.



Indicates item not stocked at time of printing - Please enquire for lead time

E&OE Pricing and all details subject to change without notice - Copyright Miniature Bearings Australia Pty Ltd

MBA Size Listings are a guide to sizes only and must not be solely relied on for critical design information.

Mounts - Leveling - Stud Type - Gold Chromate

Part Number	Load Kg	Thread	Hex Flats (B) mm	Foot Height (C) mm	Base Diameter (D) mm	Base Height (E) mm	Thread Length (F) mm	Finish
			<i>inches</i>	<i>inches</i>	<i>inches</i>	<i>inches</i>	<i>inches</i>	
# MLV-0320-0476F-G6	320	10-32 UNF (4.762mm)	9.525	30.937	19.050	2.769	25.40	Gold Chromate
			<i>0.375</i>	<i>1.218</i>	<i>0.750</i>	<i>0.109</i>	<i>1.000</i>	
# MLV-0500-0635C-G6	500	1/4-20 UNC (6.350mm)	12.700	103.581	25.400	3.962	31.75	Gold Chromate
			<i>0.500</i>	<i>4.078</i>	<i>1.000</i>	<i>0.156</i>	<i>1.250</i>	
# MLV-1700-0953C-G6	1700	3/8-16 UNC (9.525mm)	15.875	22.225	31.750	4.750	50.80	Gold Chromate
			<i>0.625</i>	<i>0.875</i>	<i>1.250</i>	<i>0.187</i>	<i>2.000</i>	
# MLV-2270-1270C-G6	2270	1/2-13 UNC (12.700mm)	19.050	28.575	47.625	6.350	50.80	Gold Chromate
			<i>0.750</i>	<i>1.125</i>	<i>1.875</i>	<i>0.250</i>	<i>2.000</i>	
# MLV-2720-1590C-G6	2720	5/8-11 UNC (15.875mm)	22.225	31.750	63.500	7.925	50.80	Gold Chromate
			<i>0.875</i>	<i>1.250</i>	<i>2.500</i>	<i>0.312</i>	<i>2.000</i>	
# MLV-3270-1905C-G6	3270	3/4-10 UNC (19.050mm)	26.975	38.100	76.200	12.700	50.80	Gold Chromate
			<i>1.062</i>	<i>1.500</i>	<i>3.000</i>	<i>0.500</i>	<i>2.000</i>	
# MLV-9980-2540C-G6	9980	1-8 UNC (25.400mm)	34.925	47.625	101.600	27.762	107.95	Gold Chromate
			<i>1.375</i>	<i>1.875</i>	<i>4.000</i>	<i>1.093</i>	<i>4.250</i>	

Indicates item not stocked at time of printing - Please enquire for lead time

Page 4 of 4

E&OE Pricing and all details subject to change without notice - Copyright Miniature Bearings Australia Pty Ltd
MBA Size Listings are a guide to sizes only and must not be solely relied on for critical design information.

DISTRIBUTED BY

Distributed By:

