



Mounts - Leveling - Stud Type - Steel - Clear Chromate - Padded

9/4/2018

Indicates item not stocked at time of printing - Please enquire for lead time

E&OE Pricing and all details subject to change without notice - Copyright Miniature Bearings Australia Pty Ltd

MBA Size Listings are a guide to sizes only and must not be solely relied on for critical design information.

Page 1 of 4

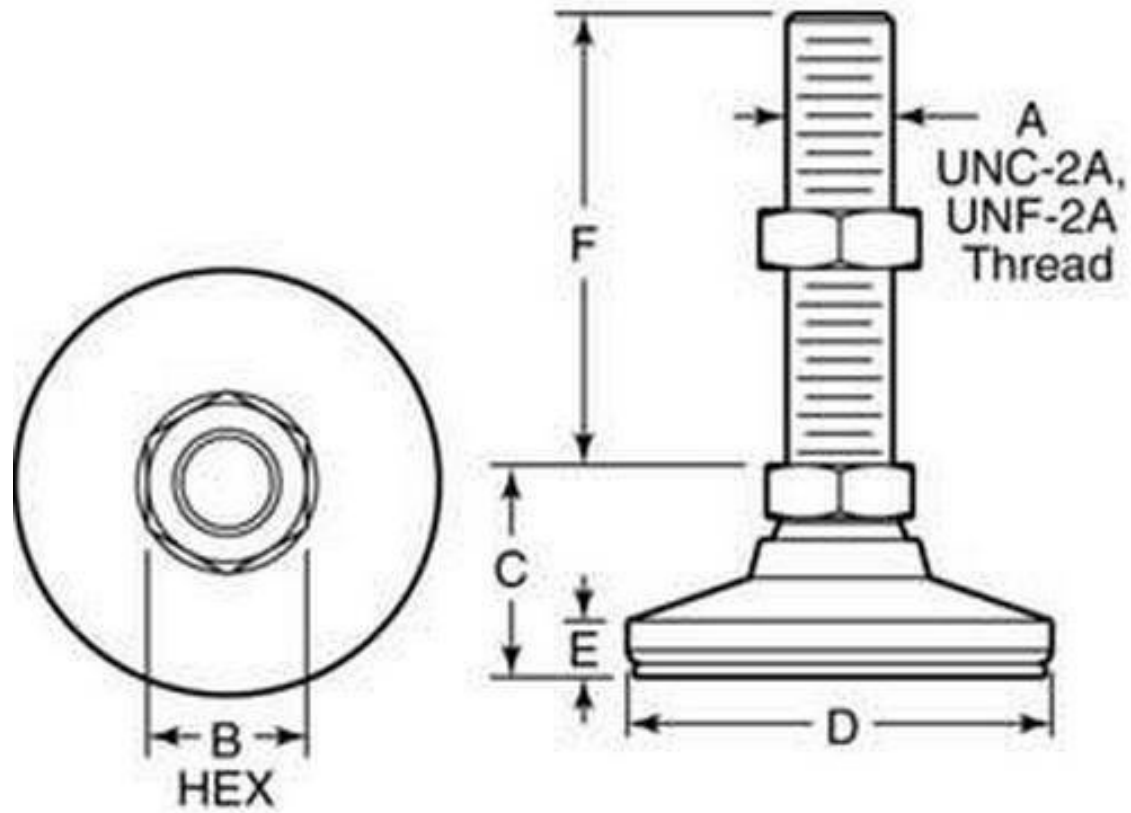
INFORMATION

15⁰ swivel off centreline to adjust to uneven surfaces and level machine tools, electronic racks and benches. Adjusters.

Indicates item not stocked at time of printing - Please enquire for lead time

E&OE Pricing and all details subject to change without notice - Copyright Miniature Bearings Australia Pty Ltd

MBA Size Listings are a guide to sizes only and must not be solely relied on for critical design information.



Indicates item not stocked at time of printing - Please enquire for lead time

E&OE Pricing and all details subject to change without notice - Copyright Miniature Bearings Australia Pty Ltd

MBA Size Listings are a guide to sizes only and must not be solely relied on for critical design information.

Mounts - Leveling - Stud Type - Steel - Clear Chromate - Padded

| Part Number | Load Kg | Thread Size | Hex Flats (B) mm | Foot Height (C) mm | Base Diameter (D) mm | Base Height (E) mm | Thread Height (F) mm | Finish | Pad Material | Pad Thickness mm |
|-----------------------|---------|--------------------------|---------------------|-----------------------|----------------------------|-----------------------|-------------------------|----------------|--------------|---------------------|
| | | | <i>inches</i> | <i>inches</i> | <i>inches</i> | <i>inches</i> | <i>inches</i> | | | <i>inches</i> |
| # MLV-0160-0635C-CP-B | 160 | 1/4-20 UNC (6.350mm) | 12.700 | 128.168 | 25.400 | 7.137 | 31.750 | Clear Chromate | Elastomer | 3.175 |
| | | | <i>0.500</i> | <i>5.046</i> | <i>1.000</i> | <i>0.281</i> | <i>1.250</i> | | | <i>0.125</i> |
| # MLV-0160-0635C-CP-A | 160 | 1/4-20 UNC (6.350mm) | 12.700 | 128.168 | 25.400 | 7.137 | 63.500 | Clear Chromate | Elastomer | 3.175 |
| | | | <i>0.500</i> | <i>5.046</i> | <i>1.000</i> | <i>0.281</i> | <i>2.500</i> | | | <i>0.125</i> |
| # MLV-0580-0953C-CP | 580 | 3/8-16 UNC (9.525mm) | 15.875 | 25.400 | 31.750 | 7.925 | 101.600 | Clear Chromate | Elastomer | 3.175 |
| | | | <i>0.625</i> | <i>1.000</i> | <i>1.250</i> | <i>0.312</i> | <i>4.000</i> | | | <i>0.125</i> |
| # MLV-0770-1270C-CP | 770 | 1/2-13 UNC (12.700mm) | 19.050 | 31.750 | 47.625 | 9.525 | 101.600 | Clear Chromate | Elastomer | 3.175 |
| | | | <i>0.750</i> | <i>1.250</i> | <i>1.875</i> | <i>0.375</i> | <i>4.000</i> | | | <i>0.125</i> |
| # MLV-0930-1590C-CP-B | 930 | 5/8-11 UNC (15.875mm) | 22.225 | 34.925 | 63.500 | 11.100 | 50.800 | Clear Chromate | Elastomer | 3.175 |
| | | | <i>0.875</i> | <i>1.375</i> | <i>2.500</i> | <i>0.437</i> | <i>2.000</i> | | | <i>0.125</i> |
| # MLV-0930-1590C-CP-A | 930 | 5/8-11 UNC (15.875mm) | 22.225 | 34.925 | 63.500 | 11.100 | 101.600 | Clear Chromate | Elastomer | 3.175 |
| | | | <i>0.875</i> | <i>1.375</i> | <i>2.500</i> | <i>0.437</i> | <i>4.000</i> | | | <i>0.125</i> |
| # MLV-1110-1905C-CP | 1110 | 3/4-10 UNC (19.050mm) | 26.975 | 41.275 | 76.200 | 15.875 | 101.600 | Clear Chromate | Elastomer | 3.175 |
| | | | <i>1.062</i> | <i>1.625</i> | <i>3.000</i> | <i>0.625</i> | <i>4.000</i> | | | <i>0.125</i> |
| # MLV-3370-2540C-CP | 3370 | 1-8 UNC (25.400mm) | 34.925 | 50.800 | 101.600 | 30.937 | 203.200 | Clear Chromate | Elastomer | 3.175 |
| | | | <i>1.375</i> | <i>2.000</i> | <i>4.000</i> | <i>1.218</i> | <i>8.000</i> | | | <i>0.125</i> |

Indicates item not stocked at time of printing - Please enquire for lead time

Page 4 of 4

E&OE Pricing and all details subject to change without notice - Copyright Miniature Bearings Australia Pty Ltd
MBA Size Listings are a guide to sizes only and must not be solely relied on for critical design information.

DISTRIBUTED BY

Distributed By:

