



Mounts - Leveling - Stud Type - Steel - Nickel Plated - Padded

9/4/2018

Indicates item not stocked at time of printing - Please enquire for lead time

E&OE Pricing and all details subject to change without notice - Copyright Miniature Bearings Australia Pty Ltd

MBA Size Listings are a guide to sizes only and must not be solely relied on for critical design information.

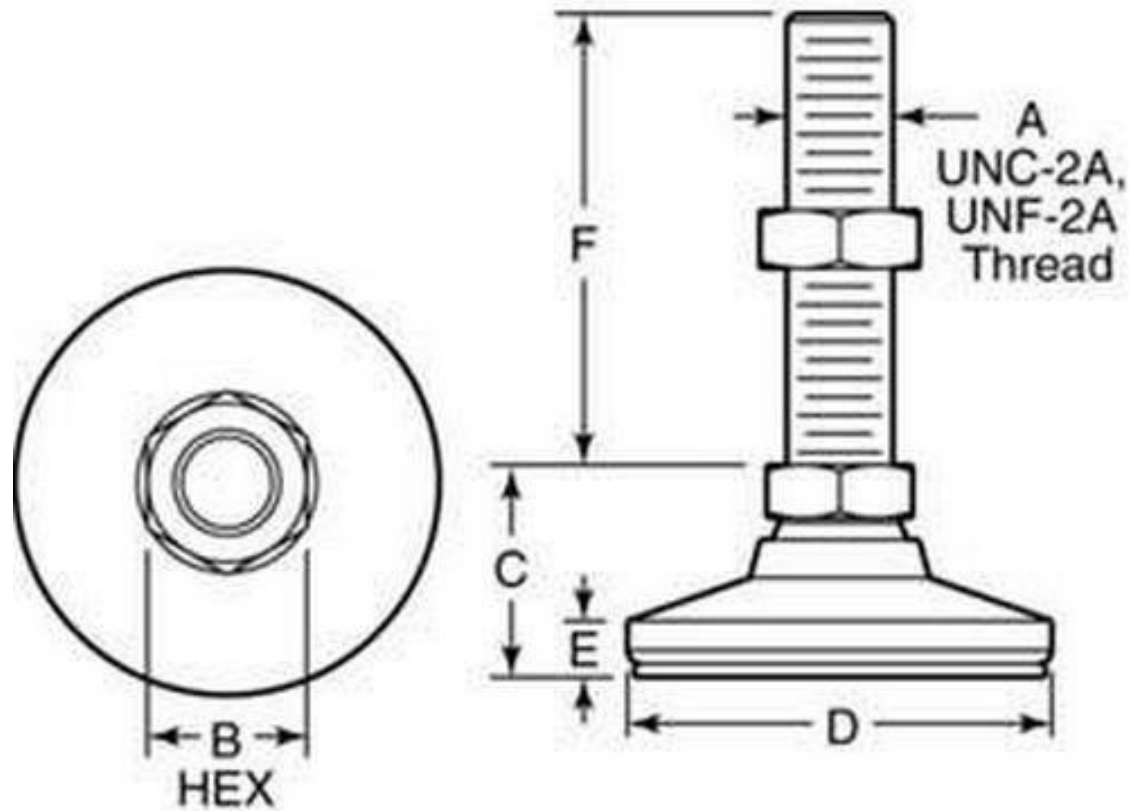
INFORMATION

15⁰ swivel off centreline to adjust to uneven surfaces and level machine tools, electronic racks and benches. Adjusters.

Indicates item not stocked at time of printing - Please enquire for lead time

E&OE Pricing and all details subject to change without notice - Copyright Miniature Bearings Australia Pty Ltd

MBA Size Listings are a guide to sizes only and must not be solely relied on for critical design information.



Indicates item not stocked at time of printing - Please enquire for lead time

E&OE Pricing and all details subject to change without notice - Copyright Miniature Bearings Australia Pty Ltd

MBA Size Listings are a guide to sizes only and must not be solely relied on for critical design information.

Mounts - Leveling - Stud Type - Steel - Nickel Plated - Padded

Part Number	Load Kg	Thread Size	Hex Flats (B) mm	Foot Height (C) mm	Base Diameter (D) mm	Base Height (E) mm	Thread Height (F) mm	Finish	Pad Material	Pad Thickness mm
			<i>inches</i>	<i>inches</i>	<i>inches</i>	<i>inches</i>	<i>inches</i>			<i>inches</i>
# MLV-0160-0476F-NPP	160	10-32 UNF (4.762mm)	9.525	16.662	19.050	27.381	25.400	Nickel Plated	Elastomer	3.175
			<i>0.375</i>	<i>0.656</i>	<i>0.750</i>	<i>1.078</i>	<i>1.000</i>			<i>0.125</i>
# MLV-0360-M08-NPP	360	M8.0x1.25 (8.0mm)	12.000	21.000	25.000	7.000	32.000	Nickel Plated	Elastomer	3.175
			<i>0.472</i>	<i>0.827</i>	<i>0.984</i>	<i>0.276</i>	<i>1.260</i>			<i>0.125</i>
# MLV-0360-M10-NPP	360	M10.0x1.50 (10.0mm)	16.000	25.000	32.000	8.000	51.000	Nickel Plated	Elastomer	3.175
			<i>0.630</i>	<i>0.984</i>	<i>1.260</i>	<i>0.315</i>	<i>2.008</i>			<i>0.125</i>
# MLV-0580-0635C-NPP	580	1/4-20 UNC (6.350mm)	12.700	128.168	25.400	7.137	31.750	Nickel Plated	Elastomer	3.175
			<i>0.500</i>	<i>5.046</i>	<i>1.000</i>	<i>0.281</i>	<i>1.250</i>			<i>0.125</i>
# MLV-0580-0476F-NPP	580	10-32 UNF (4.762mm)	9.525	16.662	19.050	27.381	50.800	Nickel Plated	Elastomer	3.175
			<i>0.375</i>	<i>0.656</i>	<i>0.750</i>	<i>1.078</i>	<i>2.000</i>			<i>0.125</i>
# MLV-0770-0635C-NPP	770	1/4-20 UNC (6.350mm)	12.700	128.168	25.400	7.137	63.500	Nickel Plated	Elastomer	3.175
			<i>0.500</i>	<i>5.046</i>	<i>1.000</i>	<i>0.281</i>	<i>2.500</i>			<i>0.125</i>
# MLV-0770-0953C-NPP	770	3/8-16 UNC (9.525mm)	15.875	25.400	31.750	7.925	50.800	Nickel Plated	Elastomer	3.175
			<i>0.625</i>	<i>1.000</i>	<i>1.250</i>	<i>0.312</i>	<i>2.000</i>			<i>0.125</i>
# MLV-0930-1270C-NPP	930	1/2-13 UNC (12.700mm)	19.050	31.750	47.625	9.525	50.800	Nickel Plated	Elastomer	3.175
			<i>0.750</i>	<i>1.250</i>	<i>1.875</i>	<i>0.375</i>	<i>2.000</i>			<i>0.125</i>

Indicates item not stocked at time of printing - Please enquire for lead time

E&OE Pricing and all details subject to change without notice - Copyright Miniature Bearings Australia Pty Ltd
MBA Size Listings are a guide to sizes only and must not be solely relied on for critical design information.

Mounts - Leveling - Stud Type - Steel - Nickel Plated - Padded

Part Number	Load Kg	Thread Size	Hex Flats (B) mm	Foot Height (C) mm	Base Diameter (D) mm	Base Height (E) mm	Thread Height (F) mm	Finish	Pad Material	Pad Thickness mm
			<i>inches</i>	<i>inches</i>	<i>inches</i>	<i>inches</i>	<i>inches</i>			<i>inches</i>
# MLV-0930-0953C-NPP	930	3/8-16 UNC (9.525mm)	15.875 <i>0.625</i>	25.400 <i>1.000</i>	31.750 <i>1.250</i>	7.925 <i>0.312</i>	101.600 <i>4.000</i>	Nickel Plated	Elastomer	3.175 <i>0.125</i>
# MLV-1110-M06-NPP	1110	M6.0x1.00 (6.0mm)	10.000 <i>0.394</i>	17.000 <i>0.669</i>	19.000 <i>0.748</i>	6.000 <i>0.236</i>	25.000 <i>0.984</i>	Nickel Plated	Elastomer	3.175 <i>0.125</i>
# MLV-1110-1270C-NPP	1110	1/2-13 UNC (12.700mm)	19.050 <i>0.750</i>	31.750 <i>1.250</i>	47.625 <i>1.875</i>	9.525 <i>0.375</i>	101.600 <i>4.000</i>	Nickel Plated	Elastomer	3.175 <i>0.125</i>
# MLV-1110-1590C-NPP	1110	5/8-11 UNC (15.875mm)	22.225 <i>0.875</i>	34.925 <i>1.375</i>	63.500 <i>2.500</i>	11.100 <i>0.437</i>	50.800 <i>2.000</i>	Nickel Plated	Elastomer	3.175 <i>0.125</i>
# MLV-1270-M12-NPP	1270	M12.0x1.75 (12.0mm0)	20.000 <i>0.787</i>	32.000 <i>1.260</i>	48.000 <i>1.890</i>	10.000 <i>0.394</i>	51.000 <i>2.008</i>	Nickel Plated	Elastomer	3.175 <i>0.125</i>
# MLV-1270-M16-NPP	1270	M16.0x2.00 (16.0mm)	22.000 <i>0.866</i>	35.000 <i>1.378</i>	64.000 <i>2.520</i>	11.000 <i>0.433</i>	51.000 <i>2.008</i>	Nickel Plated	Elastomer	3.175 <i>0.125</i>
# MLV-1700-M20-NPP	1700	M20.0x2.50 (20.0mm)	27.000 <i>1.063</i>	41.000 <i>1.614</i>	76.000 <i>2.992</i>	16.000 <i>0.630</i>	51.000 <i>2.008</i>	Nickel Plated	Elastomer	3.175 <i>0.125</i>
# MLV-1700-M24-NPP	1700	M24.0x3.00 (24.0mm)	35.000 <i>1.378</i>	51.000 <i>2.008</i>	102.000 <i>4.016</i>	14.000 <i>0.551</i>	89.000 <i>3.504</i>	Nickel Plated	Elastomer	3.175 <i>0.125</i>

Indicates item not stocked at time of printing - Please enquire for lead time

E&OE Pricing and all details subject to change without notice - Copyright Miniature Bearings Australia Pty Ltd
MBA Size Listings are a guide to sizes only and must not be solely relied on for critical design information.

Mounts - Leveling - Stud Type - Steel - Nickel Plated - Padded

Part Number	Load Kg	Thread Size	Hex Flats (B) mm	Foot Height (C) mm	Base Diameter (D) mm	Base Height (E) mm	Thread Height (F) mm	Finish	Pad Material	Pad Thickness mm
			<i>inches</i>	<i>inches</i>	<i>inches</i>	<i>inches</i>	<i>inches</i>			<i>inches</i>
# MLV-2040-M24-NPP	2040	M24.0x3.00 (24.0mm)	35.000	51.000	102.000	14.000	108.000	Nickel Plated	Elastomer	3.175
			<i>1.378</i>	<i>2.008</i>	<i>4.016</i>	<i>0.551</i>	<i>4.252</i>			<i>0.125</i>
# MLV-3370-1905C-NPP	3370	3/4-10 UNC (19.050mm)	26.975	41.275	76.200	15.875	50.800	Nickel Plated	Elastomer	3.175
			<i>1.062</i>	<i>1.625</i>	<i>3.000</i>	<i>0.625</i>	<i>2.000</i>			<i>0.125</i>
# MLV-3370-1590C-NPP	3370	5/8-11 UNC (15.875mm)	22.225	34.925	63.500	11.100	101.600	Nickel Plated	Elastomer	3.175
			<i>0.875</i>	<i>1.375</i>	<i>2.500</i>	<i>0.437</i>	<i>4.000</i>			<i>0.125</i>

Indicates item not stocked at time of printing - Please enquire for lead time

E&OE Pricing and all details subject to change without notice - Copyright Miniature Bearings Australia Pty Ltd
MBA Size Listings are a guide to sizes only and must not be solely relied on for critical design information.

DISTRIBUTED BY

Distributed By:

