



Nuts - Eye

9/4/2018

Indicates item not stocked at time of printing - Please enquire for lead time

E&OE Pricing and all details subject to change without notice - Copyright Miniature Bearings Australia Pty Ltd

MBA Size Listings are a guide to sizes only and must not be solely relied on for critical design information.

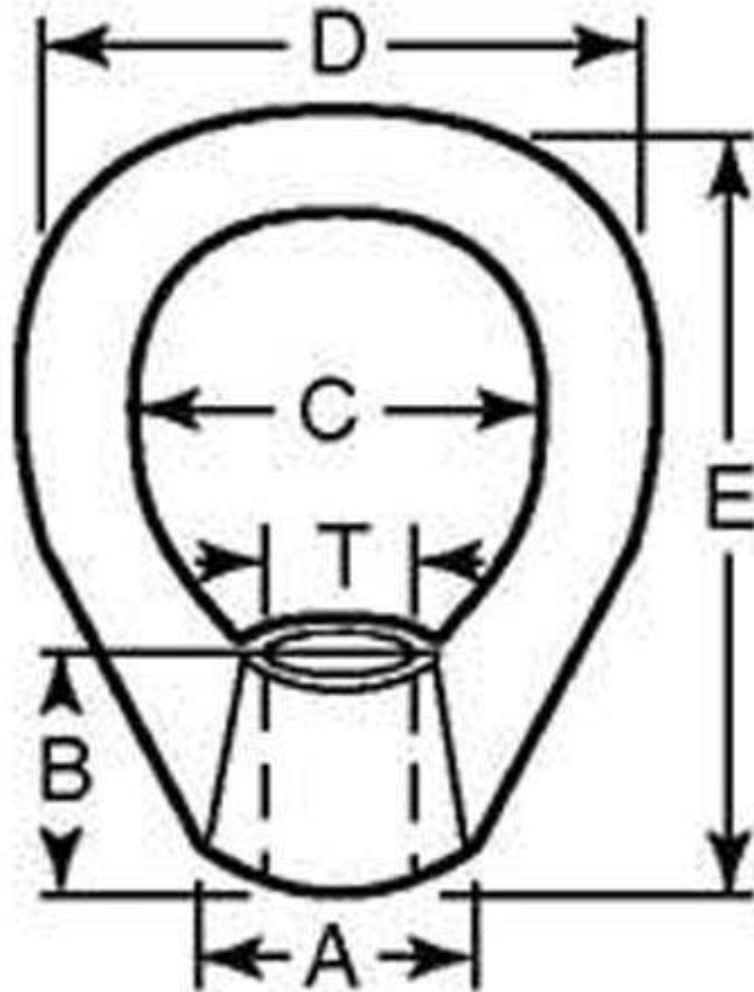
INFORMATION

Max load value based on a safety factor of 5 to 1

Indicates item not stocked at time of printing - Please enquire for lead time

E&OE Pricing and all details subject to change without notice - Copyright Miniature Bearings Australia Pty Ltd

MBA Size Listings are a guide to sizes only and must not be solely relied on for critical design information.



Indicates item not stocked at time of printing - Please enquire for lead time

E&OE Pricing and all details subject to change without notice - Copyright Miniature Bearings Australia Pty Ltd

MBA Size Listings are a guide to sizes only and must not be solely relied on for critical design information.

Nuts - Eye

Part Number	Thread (T)	Base Diameter (A) mm	Base Height (B) mm	Eye Inner Diameter (C) mm	Width (D) mm	Height (E) mm	Max Load Kg	Material
		<i>inches</i>	<i>inches</i>	<i>inches</i>	<i>inches</i>	<i>inches</i>		
# NT080M-EY-CZ	M8x1.25 (8mm Standard)	20.000	8.500	20.000	36.000	36.000	314	Forged Carbon Steel - Zinc Plated
		<i>0.787</i>	<i>0.335</i>	<i>0.787</i>	<i>1.417</i>	<i>1.417</i>		
# NT095C-EY-CS	3/8-16 UNC (9.525mm)	12.700	12.700	25.400	41.275	52.388	567	Forged Carbon Steel
		<i>0.500</i>	<i>0.500</i>	<i>1.000</i>	<i>1.625</i>	<i>2.063</i>		
# NT095C-EY-S4	3/8-16 UNC (9.525mm)	22.225	15.875	31.750	50.800	63.500	1225	Stainless Steel
		<i>0.875</i>	<i>0.625</i>	<i>1.250</i>	<i>2.000</i>	<i>2.500</i>		
# NT100M-EY-CZ	M10x1.5 (10mm Standard)	25.000	0.000	25.000	45.000	45.000	517	Forged Carbon Steel - Zinc Plated
		<i>0.984</i>	<i>0.000</i>	<i>0.984</i>	<i>1.772</i>	<i>1.772</i>		
# NT120M-EY-CZ	M12x1.75 (12mm Standard)	30.000	11.000	30.000	54.000	53.000	764	Forged Carbon Steel - Zinc Plated
		<i>1.181</i>	<i>0.433</i>	<i>1.181</i>	<i>2.126</i>	<i>2.087</i>		
# NT127C-EY-CS	1/2-13 UNC (12.7mm)	20.638	12.700	31.750	50.800	63.500	1021	Forged Carbon Steel
		<i>0.813</i>	<i>0.500</i>	<i>1.250</i>	<i>2.000</i>	<i>2.500</i>		
# NT127C-EY-S4	1/2-13 UNC (12.7mm)	22.225	15.875	31.750	50.800	63.500	1225	Stainless Steel
		<i>0.875</i>	<i>0.625</i>	<i>1.250</i>	<i>2.000</i>	<i>2.500</i>		
# NT159C-EY-CS	5/8-11 UNC (15.875mm)	25.400	15.875	38.100	63.500	80.963	1633	Forged Carbon Steel
		<i>1.000</i>	<i>0.625</i>	<i>1.500</i>	<i>2.500</i>	<i>3.188</i>		

Indicates item not stocked at time of printing - Please enquire for lead time

Page 4 of 5

E&OE Pricing and all details subject to change without notice - Copyright Miniature Bearings Australia Pty Ltd
MBA Size Listings are a guide to sizes only and must not be solely relied on for critical design information.

Nuts - Eye

Part Number	Thread (T)	Base Diameter (A) mm	Base Height (B) mm	Eye Inner Diameter (C) mm	Width (D) mm	Height (E) mm	Max Load Kg	Material
		<i>inches</i>	<i>inches</i>	<i>inches</i>	<i>inches</i>	<i>inches</i>		
# NT159C-EY-S4	5/8-11 UNC (15.875mm)	34.925	19.050	38.100	63.500	76.200	2268	Stainless Steel
		<i>1.375</i>	<i>0.750</i>	<i>1.500</i>	<i>2.500</i>	<i>3.000</i>		
# NT160M-EY-CZ	M16x2 (16mm Standard)	35.000	13.000	35.000	63.000	62.000	1573	Forged Carbon Steel - Zinc Plated
		<i>1.378</i>	<i>0.512</i>	<i>1.378</i>	<i>2.480</i>	<i>2.441</i>		
# NT191C-EY-CS	3/4-10 UNC (19.05mm)	28.575	22.225	44.450	76.200	98.425	2359	Forged Carbon Steel
		<i>1.125</i>	<i>0.875</i>	<i>1.750</i>	<i>3.000</i>	<i>3.875</i>		
# NT191C-EY-S4	3/4-10 UNC (19.05mm)	34.925	19.050	38.100	63.500	76.200	2268	Stainless Steel
		<i>1.375</i>	<i>0.750</i>	<i>1.500</i>	<i>2.500</i>	<i>3.000</i>		
# NT222C-EY-CS	7/8-9 UNC (22.225mm)	33.338	25.400	50.800	88.900	109.538	3266	Forged Carbon Steel
		<i>1.313</i>	<i>1.000</i>	<i>2.000</i>	<i>3.500</i>	<i>4.313</i>		
# NT254C-EY-CS	1-8 UNC (25.4mm)	33.338	25.400	50.800	88.900	109.538	3266	Forged Carbon Steel
		<i>1.313</i>	<i>1.000</i>	<i>2.000</i>	<i>3.500</i>	<i>4.313</i>		
# NT300M-EY-CZ	M30x3.5 (30mm Standard)	65.000	25.000	60.000	108.000	109.000	8092	Forged Carbon Steel - Zinc Plated
		<i>2.559</i>	<i>0.984</i>	<i>2.362</i>	<i>4.252</i>	<i>4.291</i>		
# NT360M-EY-CZ	M36x4 (36mm Standard)	75.000	30.000	70.000	126.000	128.000	11464	Forged Carbon Steel - Zinc Plated
		<i>2.953</i>	<i>1.181</i>	<i>2.756</i>	<i>4.961</i>	<i>5.039</i>		

Indicates item not stocked at time of printing - Please enquire for lead time

Page 5 of 5

E&OE Pricing and all details subject to change without notice - Copyright Miniature Bearings Australia Pty Ltd

MBA Size Listings are a guide to sizes only and must not be solely relied on for critical design information.

DISTRIBUTED BY

Distributed By:

