



Nuts - Hexagonal - Weld - Steel

10/4/2018

Indicates item not stocked at time of printing - Please enquire for lead time

E&OE Pricing and all details subject to change without notice - Copyright Miniature Bearings Australia Pty Ltd

MBA Size Listings are a guide to sizes only and must not be solely relied on for critical design information.

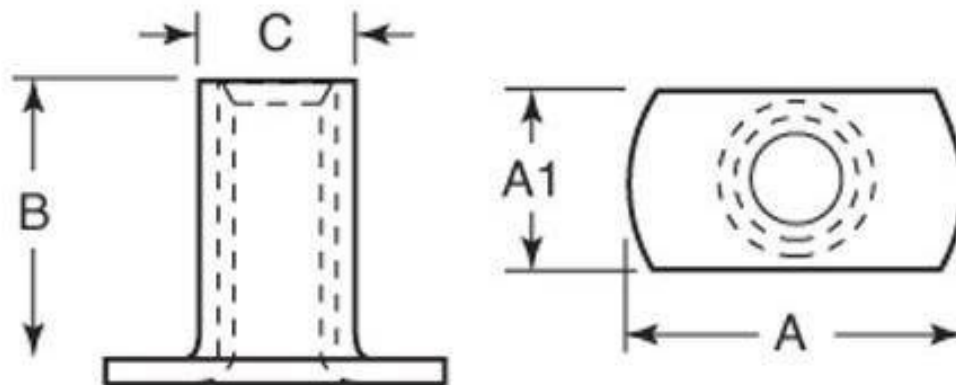
INFORMATION

Used in metalwork or for leveling appliances. Round or slab base. Material thickness is the thickness of the flange.

Indicates item not stocked at time of printing - Please enquire for lead time

E&OE Pricing and all details subject to change without notice - Copyright Miniature Bearings Australia Pty Ltd

MBA Size Listings are a guide to sizes only and must not be solely relied on for critical design information.



Indicates item not stocked at time of printing - Please enquire for lead time

E&OE Pricing and all details subject to change without notice - Copyright Miniature Bearings Australia Pty Ltd

MBA Size Listings are a guide to sizes only and must not be solely relied on for critical design information.

Nuts - Hexagonal - Weld - Steel

Part Number	Thread Size	Type	Base Length (A) mm	Base Width (A1) mm	Height (B) mm	Tube Diameter (C) mm	Material Thickness mm
			<i>inches</i>	<i>inches</i>	<i>inches</i>	<i>inches</i>	<i>inches</i>
# NT064C-SW-CS	1/4-20 UNC (6.35mm)	Slab Base	19.05 <i>0.750</i>	12.7 <i>0.500</i>	7.9 <i>0.311</i>	7.75 <i>0.305</i>	1.19 <i>0.047</i>
NT064C-RW-CS	1/4-20 UNC (6.35mm)	Round Base	19.05 <i>0.750</i>	-	7.9 <i>0.311</i>	7.75 <i>0.305</i>	1.19 <i>0.047</i>

Indicates item not stocked at time of printing - Please enquire for lead time

E&OE Pricing and all details subject to change without notice - Copyright Miniature Bearings Australia Pty Ltd

MBA Size Listings are a guide to sizes only and must not be solely relied on for critical design information.

DISTRIBUTED BY

Distributed By:

