



# Pins - Ball Lock - Economy - Steel

10/4/2018

# Indicates item not stocked at time of printing - Please enquire for lead time

E&OE Pricing and all details subject to change without notice - Copyright Miniature Bearings Australia Pty Ltd

MBA Size Listings are a guide to sizes only and must not be solely relied on for critical design information.

Page 1 of 11

## INFORMATION

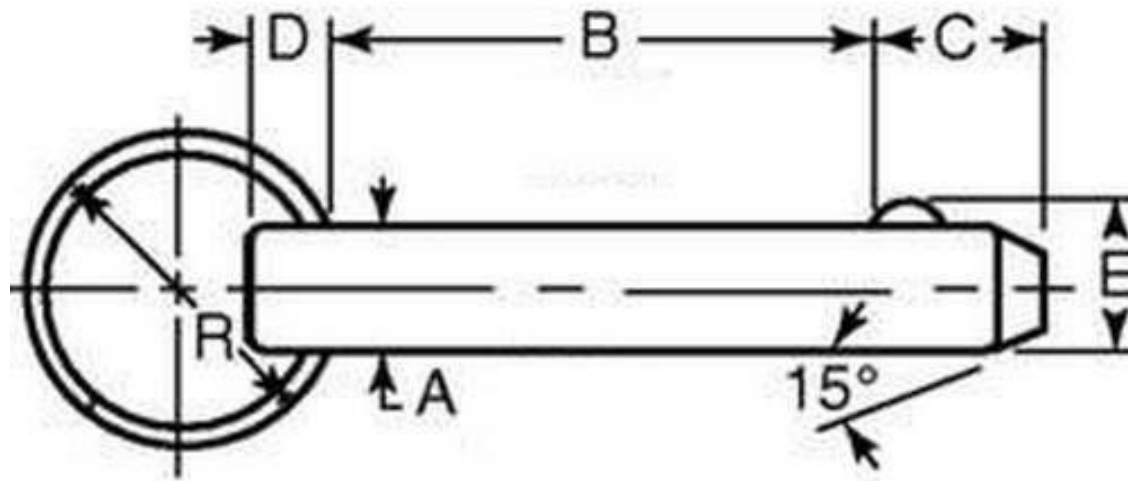
Economical pins that can be used in military or conventional equipment. Also called detent pins.

Solid body construction with direct spring loaded ball. Used for locking telescoping tubes, securing bracket assemblies, anchoring clevis fittings, hinge pins, cotter pin replacement or setting up jigs and fixtures.

Commercial drill tolerances provide clearance for standard pins.

Zinc plated C1144 steel.

Not for critical applications. If known pullout strength is required use commercial or industrial pins.



# Indicates item not stocked at time of printing - Please enquire for lead time

E&OE Pricing and all details subject to change without notice - Copyright Miniature Bearings Australia Pty Ltd

MBA Size Listings are a guide to sizes only and must not be solely relied on for critical design information.

## Pins - Ball Lock - Economy - Steel

Part Number	Nominal Diameter mm <i>inches</i>	Grip Length mm <i>inches</i>	Locking Ball to End (C) mm <i>inches</i>	Depth of Ring in Pin (D)	Locking Ball Diameter (E) mm <i>inches</i>	Ring Radius (R) mm <i>inches</i>
# BLP-048-0127-ECO-C	4.76 <i>0.187</i>	12.70 <i>0.500</i>	5.08 <i>0.200</i>	4.75	5.18 <i>0.204</i>	25.40 <i>1.000</i>
# BLP-048-0203-ECO-C	4.76 <i>0.187</i>	20.32 <i>0.800</i>	5.08 <i>0.200</i>	4.75	5.18 <i>0.204</i>	25.40 <i>1.000</i>
BLP-048-0254-ECO-C	4.76 <i>0.187</i>	25.40 <i>1.000</i>	5.08 <i>0.200</i>	4.75	5.18 <i>0.204</i>	25.40 <i>1.000</i>
BLP-048-0330-ECO-C	4.76 <i>0.187</i>	33.02 <i>1.300</i>	5.08 <i>0.200</i>	4.75	5.18 <i>0.204</i>	25.40 <i>1.000</i>
BLP-048-0381-ECO-C	4.76 <i>0.187</i>	38.10 <i>1.500</i>	5.08 <i>0.200</i>	4.75	5.18 <i>0.204</i>	25.40 <i>1.000</i>
BLP-048-0508-ECO-C	4.76 <i>0.187</i>	50.80 <i>2.000</i>	5.08 <i>0.200</i>	4.75	5.18 <i>0.204</i>	25.40 <i>1.000</i>
# BLP-048-0635-ECO-C	4.76 <i>0.187</i>	63.50 <i>2.500</i>	5.08 <i>0.200</i>	4.75	5.18 <i>0.204</i>	25.40 <i>1.000</i>
BLP-048-0762-ECO-C	4.76 <i>0.187</i>	76.20 <i>3.000</i>	5.08 <i>0.200</i>	4.75	5.18 <i>0.204</i>	25.40 <i>1.000</i>
# BLP-064-0127-ECO-C	6.35 <i>0.250</i>	12.70 <i>0.500</i>	7.93 <i>0.312</i>	5.59	7.26 <i>0.286</i>	25.40 <i>1.000</i>
# BLP-064-0203-ECO-C	6.35 <i>0.250</i>	20.32 <i>0.800</i>	7.93 <i>0.312</i>	5.59	7.26 <i>0.286</i>	25.40 <i>1.000</i>

# Indicates item not stocked at time of printing - Please enquire for lead time

E&OE Pricing and all details subject to change without notice - Copyright Miniature Bearings Australia Pty Ltd

MBA Size Listings are a guide to sizes only and must not be solely relied on for critical design information.

## Pins - Ball Lock - Economy - Steel

Part Number	Nominal Diameter mm <i>inches</i>	Grip Length mm <i>inches</i>	Locking Ball to End (C) mm <i>inches</i>	Depth of Ring in Pin (D)	Locking Ball Diameter (E) mm <i>inches</i>	Ring Radius (R) mm <i>inches</i>
# BLP-064-0254-ECO-C	6.35 <i>0.250</i>	25.40 <i>1.000</i>	7.93 <i>0.312</i>	5.59	7.26 <i>0.286</i>	25.40 <i>1.000</i>
# BLP-064-0330-ECO-C	6.35 <i>0.250</i>	33.02 <i>1.300</i>	7.93 <i>0.312</i>	5.59	7.26 <i>0.286</i>	25.40 <i>1.000</i>
BLP-064-0381-ECO-C	6.35 <i>0.250</i>	38.10 <i>1.500</i>	7.93 <i>0.312</i>	5.59	7.26 <i>0.286</i>	25.40 <i>1.000</i>
# BLP-064-0508-ECO-C	6.35 <i>0.250</i>	50.80 <i>2.000</i>	7.93 <i>0.312</i>	5.59	7.26 <i>0.286</i>	25.40 <i>1.000</i>
BLP-064-0635-ECO-C	6.35 <i>0.250</i>	63.50 <i>2.500</i>	7.93 <i>0.312</i>	5.59	7.26 <i>0.286</i>	25.40 <i>1.000</i>
BLP-064-0762-ECO-C	6.35 <i>0.250</i>	76.20 <i>3.000</i>	7.93 <i>0.312</i>	5.59	7.26 <i>0.286</i>	25.40 <i>1.000</i>
# BLP-079-0203-ECO-C	7.94 <i>0.313</i>	20.32 <i>0.800</i>	9.53 <i>0.375</i>	6.35	9.09 <i>0.358</i>	25.40 <i>1.000</i>
# BLP-079-0254-ECO-C	7.94 <i>0.313</i>	25.40 <i>1.000</i>	9.53 <i>0.375</i>	6.35	9.09 <i>0.358</i>	25.40 <i>1.000</i>
# BLP-079-0330-ECO-C	7.94 <i>0.313</i>	33.02 <i>1.300</i>	9.53 <i>0.375</i>	6.35	9.09 <i>0.358</i>	25.40 <i>1.000</i>
# BLP-079-0381-ECO-C	7.94 <i>0.313</i>	38.10 <i>1.500</i>	9.53 <i>0.375</i>	6.35	9.09 <i>0.358</i>	25.40 <i>1.000</i>

# Indicates item not stocked at time of printing - Please enquire for lead time

E&OE Pricing and all details subject to change without notice - Copyright Miniature Bearings Australia Pty Ltd

MBA Size Listings are a guide to sizes only and must not be solely relied on for critical design information.

## Pins - Ball Lock - Economy - Steel

Part Number	Nominal Diameter mm <i>inches</i>	Grip Length mm <i>inches</i>	Locking Ball to End (C) mm <i>inches</i>	Depth of Ring in Pin (D)	Locking Ball Diameter (E) mm <i>inches</i>	Ring Radius (R) mm <i>inches</i>
# BLP-079-0508-ECO-C	7.94 <i>0.313</i>	50.80 <i>2.000</i>	9.53 <i>0.375</i>	6.35	9.09 <i>0.358</i>	25.40 <i>1.000</i>
# BLP-079-0635-ECO-C	7.94 <i>0.313</i>	63.50 <i>2.500</i>	9.53 <i>0.375</i>	6.35	9.09 <i>0.358</i>	25.40 <i>1.000</i>
BLP-079-0762-ECO-C	7.94 <i>0.313</i>	76.20 <i>3.000</i>	9.53 <i>0.375</i>	6.35	9.09 <i>0.358</i>	25.40 <i>1.000</i>
# BLP-079-0889-ECO-C	7.94 <i>0.313</i>	88.90 <i>3.500</i>	9.53 <i>0.375</i>	6.35	9.09 <i>0.358</i>	25.40 <i>1.000</i>
BLP-079-1016-ECO-C	7.94 <i>0.313</i>	101.60 <i>4.000</i>	9.53 <i>0.375</i>	6.35	9.09 <i>0.358</i>	25.40 <i>1.000</i>
# BLP-095-0203-ECO-C	9.53 <i>0.375</i>	20.32 <i>0.800</i>	12.70 <i>0.500</i>	6.35	10.82 <i>0.426</i>	25.40 <i>1.000</i>
# BLP-095-0254-ECO-C	9.53 <i>0.375</i>	25.40 <i>1.000</i>	12.70 <i>0.500</i>	6.35	10.82 <i>0.426</i>	25.40 <i>1.000</i>
# BLP-095-0330-ECO-C	9.53 <i>0.375</i>	33.02 <i>1.300</i>	12.70 <i>0.500</i>	6.35	10.82 <i>0.426</i>	25.40 <i>1.000</i>
# BLP-095-0381-ECO-C	9.53 <i>0.375</i>	38.10 <i>1.500</i>	12.70 <i>0.500</i>	6.35	10.82 <i>0.426</i>	25.40 <i>1.000</i>
BLP-095-0508-ECO-C	9.53 <i>0.375</i>	50.80 <i>2.000</i>	12.70 <i>0.500</i>	6.35	10.82 <i>0.426</i>	25.40 <i>1.000</i>

# Indicates item not stocked at time of printing - Please enquire for lead time

E&OE Pricing and all details subject to change without notice - Copyright Miniature Bearings Australia Pty Ltd

MBA Size Listings are a guide to sizes only and must not be solely relied on for critical design information.

## Pins - Ball Lock - Economy - Steel

Part Number	Nominal Diameter mm <i>inches</i>	Grip Length mm <i>inches</i>	Locking Ball to End (C) mm <i>inches</i>	Depth of Ring in Pin (D)	Locking Ball Diameter (E) mm <i>inches</i>	Ring Radius (R) mm <i>inches</i>
BLP-095-0635-ECO-C	9.53 <i>0.375</i>	63.50 <i>2.500</i>	12.70 <i>0.500</i>	6.35	10.82 <i>0.426</i>	25.40 <i>1.000</i>
BLP-095-0762-ECO-C	9.53 <i>0.375</i>	76.20 <i>3.000</i>	12.70 <i>0.500</i>	6.35	10.82 <i>0.426</i>	25.40 <i>1.000</i>
# BLP-095-0889-ECO-C	9.53 <i>0.375</i>	88.90 <i>3.500</i>	12.70 <i>0.500</i>	6.35	10.82 <i>0.426</i>	25.40 <i>1.000</i>
# BLP-095-1016-ECO-C	9.53 <i>0.375</i>	101.60 <i>4.000</i>	12.70 <i>0.500</i>	6.35	10.82 <i>0.426</i>	25.40 <i>1.000</i>
# BLP-095-1143-ECO-C	9.53 <i>0.375</i>	114.30 <i>4.500</i>	12.70 <i>0.500</i>	6.35	10.82 <i>0.426</i>	25.40 <i>1.000</i>
# BLP-095-1270-ECO-C	9.53 <i>0.375</i>	127.00 <i>5.000</i>	12.70 <i>0.500</i>	6.35	10.82 <i>0.426</i>	25.40 <i>1.000</i>
# BLP-127-0254-ECO-C	12.70 <i>0.500</i>	25.40 <i>1.000</i>	15.88 <i>0.625</i>	7.93	14.48 <i>0.570</i>	31.75 <i>1.250</i>
# BLP-127-0330-ECO-C	12.70 <i>0.500</i>	33.02 <i>1.300</i>	15.88 <i>0.625</i>	7.93	14.48 <i>0.570</i>	31.75 <i>1.250</i>
# BLP-127-0381-ECO-C	12.70 <i>0.500</i>	38.10 <i>1.500</i>	15.88 <i>0.625</i>	7.93	14.48 <i>0.570</i>	31.75 <i>1.250</i>
# BLP-127-0508-ECO-C	12.70 <i>0.500</i>	50.80 <i>2.000</i>	15.88 <i>0.625</i>	7.93	14.48 <i>0.570</i>	31.75 <i>1.250</i>

# Indicates item not stocked at time of printing - Please enquire for lead time

Page 7 of 11

E&OE Pricing and all details subject to change without notice - Copyright Miniature Bearings Australia Pty Ltd  
MBA Size Listings are a guide to sizes only and must not be solely relied on for critical design information.

## Pins - Ball Lock - Economy - Steel

Part Number	Nominal Diameter mm	Grip Length mm	Locking Ball to End (C) mm	Depth of Ring in Pin (D)	Locking Ball Diameter (E) mm	Ring Radius (R) mm
	<i>inches</i>	<i>inches</i>	<i>inches</i>		<i>inches</i>	<i>inches</i>
# BLP-127-0635-ECO-C	12.70 <i>0.500</i>	63.50 <i>2.500</i>	15.88 <i>0.625</i>	7.93	14.48 <i>0.570</i>	31.75 <i>1.250</i>
BLP-127-0762-ECO-C	12.70 <i>0.500</i>	76.20 <i>3.000</i>	15.88 <i>0.625</i>	7.93	14.48 <i>0.570</i>	31.75 <i>1.250</i>
BLP-127-0889-ECO-C	12.70 <i>0.500</i>	88.90 <i>3.500</i>	15.88 <i>0.625</i>	7.93	14.48 <i>0.570</i>	31.75 <i>1.250</i>
# BLP-127-1016-ECO-C	12.70 <i>0.500</i>	101.60 <i>4.000</i>	15.88 <i>0.625</i>	7.93	14.48 <i>0.570</i>	31.75 <i>1.250</i>
# BLP-127-1143-ECO-C	12.70 <i>0.500</i>	114.30 <i>4.500</i>	15.88 <i>0.625</i>	7.93	14.48 <i>0.570</i>	31.75 <i>1.250</i>
# BLP-127-1270-ECO-C	12.70 <i>0.500</i>	127.00 <i>5.000</i>	15.88 <i>0.625</i>	7.93	14.48 <i>0.570</i>	31.75 <i>1.250</i>
# BLP-127-1397-ECO-C	12.70 <i>0.500</i>	139.70 <i>5.500</i>	15.88 <i>0.625</i>	7.93	14.48 <i>0.570</i>	31.75 <i>1.250</i>
# BLP-127-1524-ECO-C	12.70 <i>0.500</i>	152.40 <i>6.000</i>	15.88 <i>0.625</i>	7.93	14.48 <i>0.570</i>	31.75 <i>1.250</i>
# BLP-159-0508-ECO-C	15.88 <i>0.625</i>	50.80 <i>2.000</i>	19.05 <i>0.750</i>	9.53	18.03 <i>0.710</i>	31.75 <i>1.250</i>
# BLP-159-0635-ECO-C	15.88 <i>0.625</i>	63.50 <i>2.500</i>	19.05 <i>0.750</i>	9.53	18.03 <i>0.710</i>	31.75 <i>1.250</i>

# Indicates item not stocked at time of printing - Please enquire for lead time

E&OE Pricing and all details subject to change without notice - Copyright Miniature Bearings Australia Pty Ltd  
MBA Size Listings are a guide to sizes only and must not be solely relied on for critical design information.



## Pins - Ball Lock - Economy - Steel

Part Number	Nominal Diameter mm <i>inches</i>	Grip Length mm <i>inches</i>	Locking Ball to End (C) mm <i>inches</i>	Depth of Ring in Pin (D)	Locking Ball Diameter (E) mm <i>inches</i>	Ring Radius (R) mm <i>inches</i>
# BLP-159-0762-ECO-C	15.88 <i>0.625</i>	76.20 <i>3.000</i>	19.05 <i>0.750</i>	9.53	18.03 <i>0.710</i>	31.75 <i>1.250</i>
# BLP-159-0889-ECO-C	15.88 <i>0.625</i>	88.90 <i>3.500</i>	19.05 <i>0.750</i>	9.53	18.03 <i>0.710</i>	31.75 <i>1.250</i>
BLP-159-1016-ECO-C	15.88 <i>0.625</i>	101.60 <i>4.000</i>	19.05 <i>0.750</i>	9.53	18.03 <i>0.710</i>	31.75 <i>1.250</i>
# BLP-159-1143-ECO-C	15.88 <i>0.625</i>	114.30 <i>4.500</i>	19.05 <i>0.750</i>	9.53	18.03 <i>0.710</i>	31.75 <i>1.250</i>
# BLP-159-1270-ECO-C	15.88 <i>0.625</i>	127.00 <i>5.000</i>	19.05 <i>0.750</i>	9.53	18.03 <i>0.710</i>	31.75 <i>1.250</i>
# BLP-159-1524-ECO-C	15.88 <i>0.625</i>	152.40 <i>6.000</i>	19.05 <i>0.750</i>	9.53	18.03 <i>0.710</i>	31.75 <i>1.250</i>
# BLP-191-0508-ECO-C	19.05 <i>0.750</i>	50.80 <i>2.000</i>	23.80 <i>0.937</i>	9.53	21.74 <i>0.856</i>	38.10 <i>1.500</i>
# BLP-191-0635-ECO-C	19.05 <i>0.750</i>	63.50 <i>2.500</i>	23.80 <i>0.937</i>	9.53	21.74 <i>0.856</i>	38.10 <i>1.500</i>
# BLP-191-0762-ECO-C	19.05 <i>0.750</i>	76.20 <i>3.000</i>	23.80 <i>0.937</i>	9.53	21.74 <i>0.856</i>	38.10 <i>1.500</i>
# BLP-191-0889-ECO-C	19.05 <i>0.750</i>	88.90 <i>3.500</i>	23.80 <i>0.937</i>	9.53	21.74 <i>0.856</i>	38.10 <i>1.500</i>

# Indicates item not stocked at time of printing - Please enquire for lead time

E&OE Pricing and all details subject to change without notice - Copyright Miniature Bearings Australia Pty Ltd  
MBA Size Listings are a guide to sizes only and must not be solely relied on for critical design information.

## Pins - Ball Lock - Economy - Steel

Part Number	Nominal Diameter mm <i>inches</i>	Grip Length mm <i>inches</i>	Locking Ball to End (C) mm <i>inches</i>	Depth of Ring in Pin (D)	Locking Ball Diameter (E) mm <i>inches</i>	Ring Radius (R) mm <i>inches</i>
# BLP-191-1016-ECO-C	19.05 <i>0.750</i>	101.60 <i>4.000</i>	23.80 <i>0.937</i>	9.53	21.74 <i>0.856</i>	38.10 <i>1.500</i>
# BLP-191-1143-ECO-C	19.05 <i>0.750</i>	114.30 <i>4.500</i>	23.80 <i>0.937</i>	9.53	21.74 <i>0.856</i>	38.10 <i>1.500</i>
# BLP-191-1270-ECO-C	19.05 <i>0.750</i>	127.00 <i>5.000</i>	23.80 <i>0.937</i>	9.53	21.74 <i>0.856</i>	38.10 <i>1.500</i>
# BLP-191-1524-ECO-C	19.05 <i>0.750</i>	152.40 <i>6.000</i>	23.80 <i>0.937</i>	9.53	21.74 <i>0.856</i>	38.10 <i>1.500</i>
# BLP-191-1651-ECO-C	19.05 <i>0.750</i>	165.10 <i>6.500</i>	23.80 <i>0.937</i>	9.53	21.74 <i>0.856</i>	38.10 <i>1.500</i>
# BLP-191-1778-ECO-C	19.05 <i>0.750</i>	177.80 <i>7.000</i>	23.80 <i>0.937</i>	9.53	21.74 <i>0.856</i>	38.10 <i>1.500</i>
# BLP-191-2032-ECO-C	19.05 <i>0.750</i>	203.20 <i>8.000</i>	23.80 <i>0.937</i>	9.53	21.74 <i>0.856</i>	38.10 <i>1.500</i>
# BLP-254-0508-ECO-C	25.40 <i>1.000</i>	50.80 <i>2.000</i>	31.75 <i>1.250</i>	12.70	28.96 <i>1.140</i>	38.10 <i>1.500</i>
# BLP-254-0635-ECO-C	25.40 <i>1.000</i>	63.50 <i>2.500</i>	31.75 <i>1.250</i>	12.70	28.96 <i>1.140</i>	38.10 <i>1.500</i>
# BLP-254-0762-ECO-C	25.40 <i>1.000</i>	76.20 <i>3.000</i>	31.75 <i>1.250</i>	12.70	28.96 <i>1.140</i>	38.10 <i>1.500</i>

# Indicates item not stocked at time of printing - Please enquire for lead time

Page 10 of 11

E&OE Pricing and all details subject to change without notice - Copyright Miniature Bearings Australia Pty Ltd  
MBA Size Listings are a guide to sizes only and must not be solely relied on for critical design information.

## Pins - Ball Lock - Economy - Steel

Part Number	Nominal Diameter mm	Grip Length mm	Locking Ball to End (C) mm	Depth of Ring in Pin (D)	Locking Ball Diameter (E) mm	Ring Radius (R) mm
	<i>inches</i>	<i>inches</i>	<i>inches</i>		<i>inches</i>	<i>inches</i>
# BLP-254-0889-ECO-C	25.40 <i>1.000</i>	88.90 <i>3.500</i>	31.75 <i>1.250</i>	12.70	28.96 <i>1.140</i>	38.10 <i>1.500</i>
# BLP-254-1016-ECO-C	25.40 <i>1.000</i>	101.60 <i>4.000</i>	31.75 <i>1.250</i>	12.70	28.96 <i>1.140</i>	38.10 <i>1.500</i>
# BLP-254-1143-ECO-C	25.40 <i>1.000</i>	114.30 <i>4.500</i>	31.75 <i>1.250</i>	12.70	28.96 <i>1.140</i>	38.10 <i>1.500</i>
# BLP-254-1270-ECO-C	25.40 <i>1.000</i>	127.00 <i>5.000</i>	31.75 <i>1.250</i>	12.70	28.96 <i>1.140</i>	38.10 <i>1.500</i>
# BLP-254-1397-ECO-C	25.40 <i>1.000</i>	139.70 <i>5.500</i>	31.75 <i>1.250</i>	12.70	28.96 <i>1.140</i>	38.10 <i>1.500</i>
# BLP-254-1778-ECO-C	25.40 <i>1.000</i>	177.80 <i>7.000</i>	31.75 <i>1.250</i>	12.70	28.96 <i>1.140</i>	38.10 <i>1.500</i>
# BLP-254-2032-ECO-C	25.40 <i>1.000</i>	203.20 <i>8.000</i>	31.75 <i>1.250</i>	12.70	28.96 <i>1.140</i>	38.10 <i>1.500</i>

# Indicates item not stocked at time of printing - Please enquire for lead time

Page 11 of 11

E&OE Pricing and all details subject to change without notice - Copyright Miniature Bearings Australia Pty Ltd  
MBA Size Listings are a guide to sizes only and must not be solely relied on for critical design information.

DISTRIBUTED BY

Distributed By:

