



Pins - Ball Lock - Ring Handle - Industrial - Steel

10/4/2018

Indicates item not stocked at time of printing - Please enquire for lead time

E&OE Pricing and all details subject to change without notice - Copyright Miniature Bearings Australia Pty Ltd

MBA Size Listings are a guide to sizes only and must not be solely relied on for critical design information.

Page 1 of 11

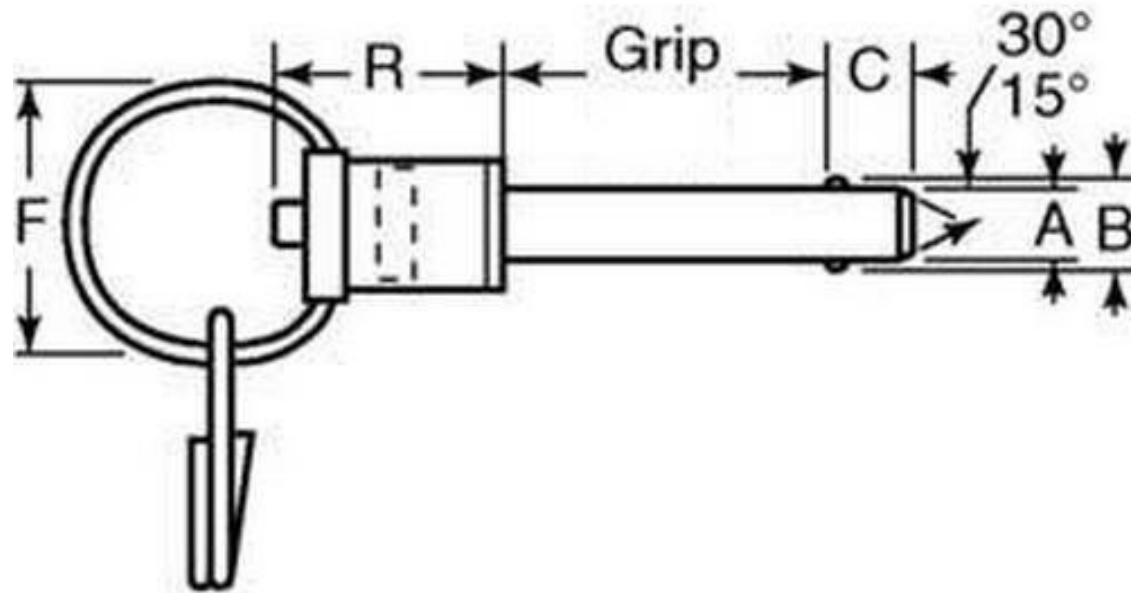
INFORMATION

Heat treated 4130 alloy spindle and shank. Handles aluminium unless noted otherwise. Also called detent pins.

Indicates item not stocked at time of printing - Please enquire for lead time

E&OE Pricing and all details subject to change without notice - Copyright Miniature Bearings Australia Pty Ltd

MBA Size Listings are a guide to sizes only and must not be solely relied on for critical design information.



Indicates item not stocked at time of printing - Please enquire for lead time

E&OE Pricing and all details subject to change without notice - Copyright Miniature Bearings Australia Pty Ltd

MBA Size Listings are a guide to sizes only and must not be solely relied on for critical design information.

Pins - Ball Lock - Ring Handle - Industrial - Steel

| Part Number | Nominal Diameter mm <i>inches</i> | Grip Length mm <i>inches</i> | Locking Ball to End (C) mm <i>inches</i> | Extended Ball Distance (B) mm <i>inches</i> | Head Diameter (J) mm <i>inches</i> | Head Length (H) mm <i>inches</i> | Pull Out Strength Kg | Calc. Double Shear Strength Kg |
|----------------------|---|---------------------------------|--|---|--|--|-------------------------|-----------------------------------|
| # BLP-048-0127-RHI-C | 4.76 <i>0.187</i> | 12.70 <i>0.500</i> | 6.60 <i>0.260</i> | 5.58 <i>0.220</i> | 20.32 <i>0.800</i> | 21.08 <i>0.830</i> | 89.28 | 2050 |
| # BLP-048-0318-RHI-C | 4.76 <i>0.187</i> | 31.75 <i>1.250</i> | 6.60 <i>0.260</i> | 5.58 <i>0.220</i> | 20.32 <i>0.800</i> | 21.08 <i>0.830</i> | 89.28 | 2050 |
| # BLP-048-0508-RHI-C | 4.76 <i>0.187</i> | 50.80 <i>2.000</i> | 6.60 <i>0.260</i> | 5.58 <i>0.220</i> | 20.32 <i>0.800</i> | 21.08 <i>0.830</i> | 89.28 | 2050 |
| # BLP-048-0762-RHI-C | 4.76 <i>0.187</i> | 76.20 <i>3.000</i> | 6.60 <i>0.260</i> | 5.58 <i>0.220</i> | 20.32 <i>0.800</i> | 21.08 <i>0.830</i> | 89.28 | 2050 |
| # BLP-048-1016-RHI-C | 4.76 <i>0.187</i> | 101.60 <i>4.000</i> | 6.60 <i>0.260</i> | 5.58 <i>0.220</i> | 20.32 <i>0.800</i> | 21.08 <i>0.830</i> | 89.28 | 2050 |
| # BLP-064-0127-RHI-C | 6.35 <i>0.250</i> | 12.70 <i>0.500</i> | 7.36 <i>0.290</i> | 7.34 <i>0.289</i> | 20.32 <i>0.800</i> | 22.61 <i>0.890</i> | 102.67 | 2050 |
| # BLP-064-0254-RHI-C | 6.35 <i>0.250</i> | 25.40 <i>1.000</i> | 7.36 <i>0.290</i> | 7.34 <i>0.289</i> | 20.32 <i>0.800</i> | 22.61 <i>0.890</i> | 102.67 | 2050 |
| # BLP-064-0381-RHI-C | 6.35 <i>0.250</i> | 38.10 <i>1.500</i> | 7.36 <i>0.290</i> | 7.34 <i>0.289</i> | 20.32 <i>0.800</i> | 22.61 <i>0.890</i> | 102.67 | 2050 |
| # BLP-064-0508-RHI-C | 6.35 <i>0.250</i> | 50.80 <i>2.000</i> | 7.36 <i>0.290</i> | 7.34 <i>0.289</i> | 20.32 <i>0.800</i> | 22.61 <i>0.890</i> | 102.67 | 2050 |
| # BLP-064-0635-RHI-C | 6.35 <i>0.250</i> | 63.50 <i>2.500</i> | 7.36 <i>0.290</i> | 7.34 <i>0.289</i> | 20.32 <i>0.800</i> | 22.61 <i>0.890</i> | 102.67 | 2050 |

Indicates item not stocked at time of printing - Please enquire for lead time

Page 4 of 11

E&OE Pricing and all details subject to change without notice - Copyright Miniature Bearings Australia Pty Ltd

MBA Size Listings are a guide to sizes only and must not be solely relied on for critical design information.

Pins - Ball Lock - Ring Handle - Industrial - Steel

| Part Number | Nominal Diameter mm <i>inches</i> | Grip Length mm <i>inches</i> | Locking Ball to End (C) mm <i>inches</i> | Extended Ball Distance (B) mm <i>inches</i> | Head Diameter (J) mm <i>inches</i> | Head Length (H) mm <i>inches</i> | Pull Out Strength Kg | Calc. Double Shear Strength Kg |
|----------------------|---|---------------------------------|--|---|--|--|-------------------------|-----------------------------------|
| # BLP-064-0762-RHI-C | 6.35 <i>0.250</i> | 76.20 <i>3.000</i> | 7.36 <i>0.290</i> | 7.34 <i>0.289</i> | 20.32 <i>0.800</i> | 22.61 <i>0.890</i> | 102.67 | 2050 |
| # BLP-064-0889-RHI-C | 6.35 <i>0.250</i> | 88.90 <i>3.500</i> | 7.36 <i>0.290</i> | 7.34 <i>0.289</i> | 20.32 <i>0.800</i> | 22.61 <i>0.890</i> | 102.67 | 2050 |
| # BLP-064-1016-RHI-C | 6.35 <i>0.250</i> | 101.60 <i>4.000</i> | 8.38 <i>0.330</i> | 9.52 <i>0.375</i> | 28.83 <i>1.135</i> | 23.62 <i>0.930</i> | 227.67 | 2050 |
| # BLP-079-0254-RHI-C | 7.94 <i>0.313</i> | 25.40 <i>1.000</i> | 8.38 <i>0.330</i> | 9.52 <i>0.375</i> | 28.83 <i>1.135</i> | 23.62 <i>0.930</i> | 227.67 | 2050 |
| # BLP-079-0381-RHI-C | 7.94 <i>0.313</i> | 38.10 <i>1.500</i> | 8.38 <i>0.330</i> | 9.52 <i>0.375</i> | 28.83 <i>1.135</i> | 23.62 <i>0.930</i> | 227.67 | 2050 |
| # BLP-079-0508-RHI-C | 7.94 <i>0.313</i> | 50.80 <i>2.000</i> | 8.38 <i>0.330</i> | 9.52 <i>0.375</i> | 28.83 <i>1.135</i> | 23.62 <i>0.930</i> | 227.67 | 2050 |
| # BLP-079-0635-RHI-C | 7.94 <i>0.313</i> | 63.50 <i>2.500</i> | 8.38 <i>0.330</i> | 9.52 <i>0.375</i> | 28.83 <i>1.135</i> | 23.62 <i>0.930</i> | 227.67 | 2050 |
| # BLP-079-0762-RHI-C | 7.94 <i>0.313</i> | 76.20 <i>3.000</i> | 8.38 <i>0.330</i> | 9.52 <i>0.375</i> | 28.83 <i>1.135</i> | 23.62 <i>0.930</i> | 227.67 | 2050 |
| # BLP-079-1016-RHI-C | 7.94 <i>0.313</i> | 101.60 <i>4.000</i> | 8.38 <i>0.330</i> | 9.52 <i>0.375</i> | 28.83 <i>1.135</i> | 23.62 <i>0.930</i> | 227.67 | 2050 |
| # BLP-079-1143-RHI-C | 7.94 <i>0.313</i> | 114.30 <i>4.500</i> | 8.38 <i>0.330</i> | 9.52 <i>0.375</i> | 28.83 <i>1.135</i> | 23.62 <i>0.930</i> | 227.67 | 2050 |

Indicates item not stocked at time of printing - Please enquire for lead time

Page 5 of 11

E&OE Pricing and all details subject to change without notice - Copyright Miniature Bearings Australia Pty Ltd
MBA Size Listings are a guide to sizes only and must not be solely relied on for critical design information.

Pins - Ball Lock - Ring Handle - Industrial - Steel

| Part Number | Nominal Diameter mm <i>inches</i> | Grip Length mm <i>inches</i> | Locking Ball to End (C) mm <i>inches</i> | Extended Ball Distance (B) mm <i>inches</i> | Head Diameter (J) mm <i>inches</i> | Head Length (H) mm <i>inches</i> | Pull Out Strength Kg | Calc. Double Shear Strength Kg |
|----------------------|---|---------------------------------|--|---|--|--|-------------------------|-----------------------------------|
| # BLP-079-1270-RHI-C | 7.94 <i>0.313</i> | 127.00 <i>5.000</i> | 8.38 <i>0.330</i> | 9.52 <i>0.375</i> | 28.83 <i>1.135</i> | 23.62 <i>0.930</i> | 227.67 | 2050 |
| # BLP-079-1524-RHI-C | 7.94 <i>0.313</i> | 152.40 <i>6.000</i> | 8.38 <i>0.330</i> | 9.52 <i>0.375</i> | 28.83 <i>1.135</i> | 23.62 <i>0.930</i> | 227.67 | 2050 |
| # BLP-095-0127-RHI-C | 9.53 <i>0.375</i> | 12.70 <i>0.500</i> | 9.27 <i>0.365</i> | 11.17 <i>0.440</i> | 28.83 <i>1.135</i> | 26.42 <i>1.040</i> | 256.69 | 2050 |
| # BLP-095-0254-RHI-C | 9.53 <i>0.375</i> | 25.40 <i>1.000</i> | 9.27 <i>0.365</i> | 11.17 <i>0.440</i> | 28.83 <i>1.135</i> | 26.42 <i>1.040</i> | 256.69 | 2050 |
| # BLP-095-0317-RHI-C | 9.53 <i>0.375</i> | 31.70 <i>1.248</i> | 9.27 <i>0.365</i> | 11.17 <i>0.440</i> | 28.83 <i>1.135</i> | 26.42 <i>1.040</i> | 256.69 | 2050 |
| # BLP-095-0381-RHI-C | 9.53 <i>0.375</i> | 38.10 <i>1.500</i> | 9.27 <i>0.365</i> | 11.17 <i>0.440</i> | 28.83 <i>1.135</i> | 26.42 <i>1.040</i> | 256.69 | 2050 |
| # BLP-095-0444-RHI-C | 9.53 <i>0.375</i> | 44.40 <i>1.748</i> | 9.27 <i>0.365</i> | 11.17 <i>0.440</i> | 28.83 <i>1.135</i> | 26.42 <i>1.040</i> | 256.69 | 2050 |
| # BLP-095-0508-RHI-C | 9.53 <i>0.375</i> | 50.80 <i>2.000</i> | 9.27 <i>0.365</i> | 11.17 <i>0.440</i> | 28.83 <i>1.135</i> | 26.42 <i>1.040</i> | 256.69 | 2050 |
| # BLP-095-0571-RHI-C | 9.53 <i>0.375</i> | 57.10 <i>2.248</i> | 9.27 <i>0.365</i> | 11.17 <i>0.440</i> | 28.83 <i>1.135</i> | 26.42 <i>1.040</i> | 256.69 | 2050 |
| # BLP-095-0635-RHI-C | 9.53 <i>0.375</i> | 63.50 <i>2.500</i> | 9.27 <i>0.365</i> | 11.17 <i>0.440</i> | 28.83 <i>1.135</i> | 26.42 <i>1.040</i> | 256.69 | 2050 |

Indicates item not stocked at time of printing - Please enquire for lead time

Page 6 of 11

E&OE Pricing and all details subject to change without notice - Copyright Miniature Bearings Australia Pty Ltd
MBA Size Listings are a guide to sizes only and must not be solely relied on for critical design information.

Pins - Ball Lock - Ring Handle - Industrial - Steel

| Part Number | Nominal Diameter mm <i>inches</i> | Grip Length mm <i>inches</i> | Locking Ball to End (C) mm <i>inches</i> | Extended Ball Distance (B) mm <i>inches</i> | Head Diameter (J) mm <i>inches</i> | Head Length (H) mm <i>inches</i> | Pull Out Strength Kg | Calc. Double Shear Strength Kg |
|----------------------|---|---------------------------------|--|---|--|--|-------------------------|-----------------------------------|
| # BLP-095-0762-RHI-C | 9.53 <i>0.375</i> | 76.20 <i>3.000</i> | 9.27 <i>0.365</i> | 11.17 <i>0.440</i> | 28.83 <i>1.135</i> | 26.42 <i>1.040</i> | 256.69 | 2050 |
| # BLP-095-0889-RHI-C | 9.53 <i>0.375</i> | 88.90 <i>3.500</i> | 9.27 <i>0.365</i> | 11.17 <i>0.440</i> | 28.83 <i>1.135</i> | 26.42 <i>1.040</i> | 256.69 | 2050 |
| # BLP-095-1016-RHI-C | 9.53 <i>0.375</i> | 101.60 <i>4.000</i> | 9.27 <i>0.365</i> | 11.17 <i>0.440</i> | 28.83 <i>1.135</i> | 26.42 <i>1.040</i> | 256.69 | 2050 |
| # BLP-095-1143-RHI-C | 9.53 <i>0.375</i> | 114.30 <i>4.500</i> | 9.27 <i>0.365</i> | 11.17 <i>0.440</i> | 28.83 <i>1.135</i> | 26.42 <i>1.040</i> | 256.69 | 2050 |
| # BLP-095-1270-RHI-C | 9.53 <i>0.375</i> | 127.00 <i>5.000</i> | 9.27 <i>0.365</i> | 11.17 <i>0.440</i> | 28.83 <i>1.135</i> | 26.42 <i>1.040</i> | 256.69 | 2050 |
| # BLP-095-1397-RHI-C | 9.53 <i>0.375</i> | 139.70 <i>5.500</i> | 9.27 <i>0.365</i> | 11.17 <i>0.440</i> | 28.83 <i>1.135</i> | 26.42 <i>1.040</i> | 256.69 | 2050 |
| # BLP-095-1524-RHI-C | 9.53 <i>0.375</i> | 152.40 <i>6.000</i> | 9.27 <i>0.365</i> | 11.17 <i>0.440</i> | 28.83 <i>1.135</i> | 26.42 <i>1.040</i> | 256.69 | 2050 |
| # BLP-111-0508-RHI-C | 11.11 <i>0.437</i> | 50.80 <i>2.000</i> | 9.65 <i>0.380</i> | 12.92 <i>0.509</i> | 35.560 (Steel Handle) | 29.46 <i>1.160</i> | 316.96 | 11160 |
| # BLP-111-0635-RHI-C | 11.11 <i>0.437</i> | 63.50 <i>2.500</i> | 9.65 <i>0.380</i> | 12.92 <i>0.509</i> | 35.560 (Steel Handle) | 29.46 <i>1.160</i> | 316.96 | 11160 |
| # BLP-111-0762-RHI-C | 11.11 <i>0.437</i> | 76.20 <i>3.000</i> | 9.65 <i>0.380</i> | 12.92 <i>0.509</i> | 35.56 <i>1.400</i> | 29.46 <i>1.160</i> | 316.96 | 11160 |

Indicates item not stocked at time of printing - Please enquire for lead time

Page 7 of 11

E&OE Pricing and all details subject to change without notice - Copyright Miniature Bearings Australia Pty Ltd
MBA Size Listings are a guide to sizes only and must not be solely relied on for critical design information.

Pins - Ball Lock - Ring Handle - Industrial - Steel

| Part Number | Nominal Diameter mm | Grip Length mm | Locking Ball to End (C) mm | Extended Ball Distance (B) mm | Head Diameter (J) mm | Head Length (H) mm | Pull Out Strength Kg | Calc. Double Shear Strength Kg |
|----------------------|------------------------|------------------------|-------------------------------|----------------------------------|--------------------------|-----------------------|-------------------------|-----------------------------------|
| | <i>inches</i> | <i>inches</i> | <i>inches</i> | <i>inches</i> | <i>inches</i> | <i>inches</i> | | |
| # BLP-111-1016-RHI-C | 11.11 <i>0.437</i> | 101.60 <i>4.000</i> | 9.65 <i>0.380</i> | 12.92 <i>0.509</i> | 35.560 (Steel Handle) | 29.46 <i>1.160</i> | 316.96 | 11160 |
| # BLP-127-0254-RHI-C | 12.70 <i>0.500</i> | 25.40 <i>1.000</i> | 11.68 <i>0.460</i> | 15.08 <i>0.594</i> | 35.56 <i>1.400</i> | 30.23 <i>1.190</i> | 517.85 | 11160 |
| # BLP-127-0381-RHI-C | 12.70 <i>0.500</i> | 38.10 <i>1.500</i> | 11.68 <i>0.460</i> | 15.08 <i>0.594</i> | 35.56 <i>1.400</i> | 30.23 <i>1.190</i> | 517.85 | 14600 |
| # BLP-127-0444-RHI-C | 12.70 <i>0.500</i> | 44.40 <i>1.748</i> | 11.68 <i>0.460</i> | 15.08 <i>0.594</i> | 35.56 <i>1.400</i> | 30.23 <i>1.190</i> | 517.85 | 14600 |
| # BLP-127-0508-RHI-C | 12.70 <i>0.500</i> | 50.80 <i>2.000</i> | 11.68 <i>0.460</i> | 15.08 <i>0.594</i> | 35.56 <i>1.400</i> | 30.23 <i>1.190</i> | 517.85 | 14600 |
| # BLP-127-0635-RHI-C | 12.70 <i>0.500</i> | 63.50 <i>2.500</i> | 11.68 <i>0.460</i> | 15.08 <i>0.594</i> | 35.56 <i>1.400</i> | 30.23 <i>1.190</i> | 517.85 | 14600 |
| # BLP-127-0762-RHI-C | 12.70 <i>0.500</i> | 76.20 <i>3.000</i> | 11.68 <i>0.460</i> | 15.08 <i>0.594</i> | 35.56 <i>1.400</i> | 30.23 <i>1.190</i> | 517.85 | 14600 |
| # BLP-127-0889-RHI-C | 12.70 <i>0.500</i> | 88.90 <i>3.500</i> | 11.68 <i>0.460</i> | 15.08 <i>0.594</i> | 35.56 <i>1.400</i> | 30.23 <i>1.190</i> | 517.85 | 14600 |
| # BLP-127-1016-RHI-C | 12.70 <i>0.500</i> | 101.60 <i>4.000</i> | 11.68 <i>0.460</i> | 15.08 <i>0.594</i> | 35.56 <i>1.400</i> | 30.23 <i>1.190</i> | 517.85 | 14600 |
| # BLP-127-1143-RHI-C | 12.70 <i>0.500</i> | 114.30 <i>4.500</i> | 11.68 <i>0.460</i> | 15.08 <i>0.594</i> | 35.56 <i>1.400</i> | 30.23 <i>1.190</i> | 517.85 | 2050 |

Indicates item not stocked at time of printing - Please enquire for lead time

Page 8 of 11

E&OE Pricing and all details subject to change without notice - Copyright Miniature Bearings Australia Pty Ltd
MBA Size Listings are a guide to sizes only and must not be solely relied on for critical design information.

Pins - Ball Lock - Ring Handle - Industrial - Steel

| Part Number | Nominal Diameter mm <i>inches</i> | Grip Length mm <i>inches</i> | Locking Ball to End (C) mm <i>inches</i> | Extended Ball Distance (B) mm <i>inches</i> | Head Diameter (J) mm <i>inches</i> | Head Length (H) mm <i>inches</i> | Pull Out Strength Kg | Calc. Double Shear Strength Kg |
|----------------------|---|---------------------------------|--|---|--|--|-------------------------|-----------------------------------|
| # BLP-127-1270-RHI-C | 12.70 <i>0.500</i> | 127.00 <i>5.000</i> | 11.68 <i>0.460</i> | 15.08 <i>0.594</i> | 35.56 <i>1.400</i> | 30.23 <i>1.190</i> | 517.85 | 2050 |
| # BLP-127-1397-RHI-C | 12.70 <i>0.500</i> | 139.70 <i>5.500</i> | 11.68 <i>0.460</i> | 15.08 <i>0.594</i> | 35.56 <i>1.400</i> | 30.23 <i>1.190</i> | 517.85 | 2050 |
| # BLP-127-1524-RHI-C | 12.70 <i>0.500</i> | 152.40 <i>6.000</i> | 11.68 <i>0.460</i> | 15.08 <i>0.594</i> | 35.56 <i>1.400</i> | 30.23 <i>1.190</i> | 517.85 | 14600 |
| # BLP-143-0508-RHI-C | 14.29 <i>0.563</i> | 50.80 <i>2.000</i> | 12.95 <i>0.510</i> | 16.91 <i>0.666</i> | 41.910 (Steel Handle) | 35.81 <i>1.410</i> | 633.92 | 18300 |
| # BLP-143-0762-RHI-C | 14.29 <i>0.563</i> | 76.20 <i>3.000</i> | 12.95 <i>0.510</i> | 16.91 <i>0.666</i> | 41.910 (Steel Handle) | 35.81 <i>1.410</i> | 633.92 | 18300 |
| # BLP-159-0508-RHI-C | 15.88 <i>0.625</i> | 50.80 <i>2.000</i> | 14.73 <i>0.580</i> | 19.05 <i>0.750</i> | 43.180 (Steel Handle) | 38.10 <i>1.500</i> | 924.10 | 22800 |
| # BLP-159-0635-RHI-C | 15.88 <i>0.625</i> | 63.50 <i>2.500</i> | 14.73 <i>0.580</i> | 19.05 <i>0.750</i> | 43.180 (Steel Handle) | 38.10 <i>1.500</i> | 924.10 | 22800 |
| # BLP-159-0762-RHI-C | 15.88 <i>0.625</i> | 76.20 <i>3.000</i> | 14.73 <i>0.580</i> | 19.05 <i>0.750</i> | 43.180 (Steel Handle) | 38.10 <i>1.500</i> | 924.10 | 22800 |
| # BLP-159-0889-RHI-C | 15.88 <i>0.625</i> | 88.90 <i>3.500</i> | 14.73 <i>0.580</i> | 19.05 <i>0.750</i> | 43.180 (Steel Handle) | 38.10 <i>1.500</i> | 924.10 | 22800 |

Indicates item not stocked at time of printing - Please enquire for lead time

Page 9 of 11

E&OE Pricing and all details subject to change without notice - Copyright Miniature Bearings Australia Pty Ltd
MBA Size Listings are a guide to sizes only and must not be solely relied on for critical design information.

Pins - Ball Lock - Ring Handle - Industrial - Steel

| Part Number | Nominal Diameter mm | Grip Length mm | Locking Ball to End (C) mm | Extended Ball Distance (B) mm | Head Diameter (J) mm | Head Length (H) mm | Pull Out Strength Kg | Calc. Double Shear Strength Kg |
|----------------------|------------------------|----------------|-------------------------------|----------------------------------|--------------------------|-----------------------|-------------------------|-----------------------------------|
| | <i>inches</i> | <i>inches</i> | <i>inches</i> | <i>inches</i> | <i>inches</i> | <i>inches</i> | | |
| # BLP-159-1016-RHI-C | 15.88 | 101.60 | 14.73 | 19.05 | 43.180 (Steel Handle) | 38.10 | 924.10 | 22800 |
| | <i>0.625</i> | <i>4.000</i> | <i>0.580</i> | <i>0.750</i> | | <i>1.500</i> | | |
| # BLP-159-1143-RHI-C | 15.88 | 114.30 | 14.73 | 19.05 | 43.180 (Steel Handle) | 38.10 | 924.10 | 22800 |
| | <i>0.625</i> | <i>4.500</i> | <i>0.580</i> | <i>0.750</i> | | <i>1.500</i> | | |
| # BLP-159-1270-RHI-C | 15.88 | 127.00 | 14.73 | 19.05 | 43.180 (Steel Handle) | 38.10 | 924.10 | 2050 |
| | <i>0.625</i> | <i>5.000</i> | <i>0.580</i> | <i>0.750</i> | | <i>1.500</i> | | |
| # BLP-191-0508-RHI-C | 19.05 | 50.80 | 17.01 | 22.52 | 48.26 | 42.67 | 1316.96 | 36800 |
| | <i>0.750</i> | <i>2.000</i> | <i>0.670</i> | <i>0.887</i> | <i>1.900</i> | <i>1.680</i> | | |
| # BLP-191-0635-RHI-C | 19.05 | 63.50 | 17.01 | 22.52 | 48.26 | 42.67 | 1316.96 | 36800 |
| | <i>0.750</i> | <i>2.500</i> | <i>0.670</i> | <i>0.887</i> | <i>1.900</i> | <i>1.680</i> | | |
| # BLP-191-0762-RHI-C | 19.05 | 76.20 | 17.01 | 22.52 | 48.26 | 42.67 | 1316.96 | 36800 |
| | <i>0.750</i> | <i>3.000</i> | <i>0.670</i> | <i>0.887</i> | <i>1.900</i> | <i>1.680</i> | | |
| # BLP-191-0889-RHI-C | 19.05 | 88.90 | 17.01 | 22.52 | 48.26 | 42.67 | 1316.96 | 36800 |
| | <i>0.750</i> | <i>3.500</i> | <i>0.670</i> | <i>0.887</i> | <i>1.900</i> | <i>1.680</i> | | |
| # BLP-191-1524-RHI-C | 19.05 | 152.40 | 17.01 | 22.52 | 48.260 (Steel Handle) | 42.67 | 1316.96 | 36800 |
| | <i>0.750</i> | <i>6.000</i> | <i>0.670</i> | <i>0.887</i> | | <i>1.680</i> | | |
| # BLP-222-0762-RHI-C | 22.23 | 76.20 | 19.30 | 26.56 | 57.15 | 50.42 | 1741.07 | 50200 |
| | <i>0.875</i> | <i>3.000</i> | <i>0.760</i> | <i>1.046</i> | <i>2.250</i> | <i>1.985</i> | | |

Indicates item not stocked at time of printing - Please enquire for lead time

Page 10 of 11

E&OE Pricing and all details subject to change without notice - Copyright Miniature Bearings Australia Pty Ltd
MBA Size Listings are a guide to sizes only and must not be solely relied on for critical design information.

Pins - Ball Lock - Ring Handle - Industrial - Steel

| Part Number | Nominal Diameter mm | Grip Length mm | Locking Ball to End (C) mm | Extended Ball Distance (B) mm | Head Diameter (J) mm | Head Length (H) mm | Pull Out Strength Kg | Calc. Double Shear Strength Kg |
|----------------------|------------------------|------------------------|-------------------------------|----------------------------------|--------------------------|-----------------------|-------------------------|-----------------------------------|
| | <i>inches</i> | <i>inches</i> | <i>inches</i> | <i>inches</i> | <i>inches</i> | <i>inches</i> | | |
| # BLP-222-1016-RHI-C | 22.23 <i>0.875</i> | 101.60 <i>4.000</i> | 19.30 <i>0.760</i> | 26.56 <i>1.046</i> | 57.15 <i>2.250</i> | 50.42 <i>1.985</i> | 1741.07 | 50200 |
| # BLP-254-0508-RHI-C | 25.40 <i>1.000</i> | 50.80 <i>2.000</i> | 22.60 <i>0.890</i> | 30.96 <i>1.219</i> | 57.15 <i>2.250</i> | 54.36 <i>2.140</i> | 2446.42 | 58400 |
| # BLP-254-1016-RHI-C | 25.40 <i>1.000</i> | 101.60 <i>4.000</i> | 22.60 <i>0.890</i> | 30.96 <i>1.219</i> | 57.150 (Steel Handle) | 54.36 <i>2.140</i> | 2446.42 | 58400 |
| # BLP-254-1524-RHI-C | 25.40 <i>1.000</i> | 152.40 <i>6.000</i> | 22.60 <i>0.890</i> | 30.96 <i>1.219</i> | 57.15 <i>2.250</i> | 54.36 <i>2.140</i> | 2446.42 | 58400 |

Indicates item not stocked at time of printing - Please enquire for lead time

Page 11 of 11

E&OE Pricing and all details subject to change without notice - Copyright Miniature Bearings Australia Pty Ltd
MBA Size Listings are a guide to sizes only and must not be solely relied on for critical design information.

DISTRIBUTED BY

Distributed By:

