



Pins - Ball Lock - Shoulder Type - T Handle

10/4/2018

Indicates item not stocked at time of printing - Please enquire for lead time

E&OE Pricing and all details subject to change without notice - Copyright Miniature Bearings Australia Pty Ltd

MBA Size Listings are a guide to sizes only and must not be solely relied on for critical design information.

Page 1 of 8

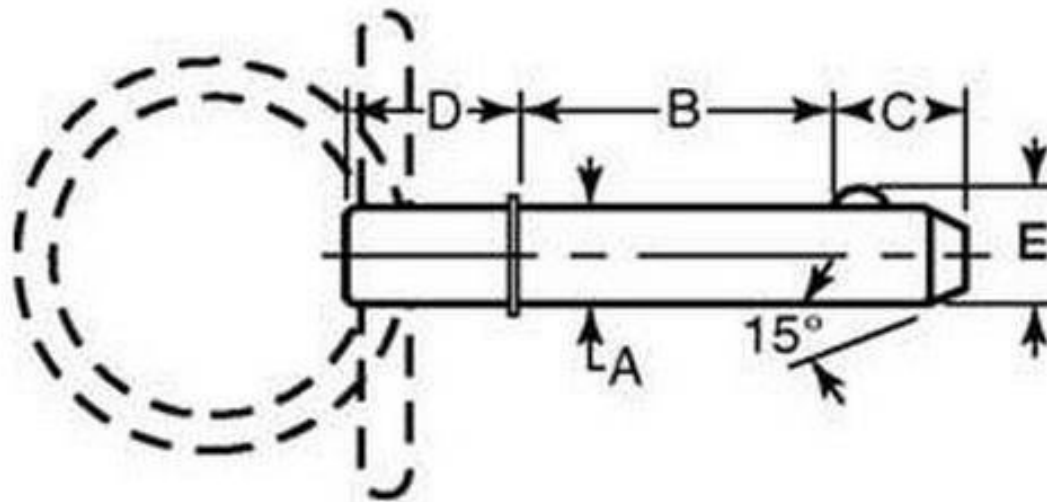
INFORMATION

Zinc plated C1144 pins with a shoulder that prevents the pin being inserted all the way to the handle. Tee handle. Also called detent pins.

Indicates item not stocked at time of printing - Please enquire for lead time

E&OE Pricing and all details subject to change without notice - Copyright Miniature Bearings Australia Pty Ltd

MBA Size Listings are a guide to sizes only and must not be solely relied on for critical design information.



Indicates item not stocked at time of printing - Please enquire for lead time

E&OE Pricing and all details subject to change without notice - Copyright Miniature Bearings Australia Pty Ltd

MBA Size Listings are a guide to sizes only and must not be solely relied on for critical design information.

Pins - Ball Lock - Shoulder Type - T Handle

Part Number	Nominal Diameter mm <i>inches</i>	Grip Length mm <i>inches</i>	Locking Ball to End (C) mm <i>inches</i>	Shoulder To End (D) mm <i>inches</i>
# BLP-048-0127-TSH-C	4.76 <i>0.187</i>	12.70 <i>0.500</i>	5.18 <i>0.204</i>	19.05 <i>0.750</i>
BLP-048-0254-TSH-C	4.76 <i>0.187</i>	25.40 <i>1.000</i>	5.18 <i>0.204</i>	19.05 <i>0.750</i>
# BLP-048-0381-TSH-C	4.76 <i>0.187</i>	38.10 <i>1.500</i>	5.18 <i>0.204</i>	19.05 <i>0.750</i>
# BLP-048-0508-TSH-C	4.76 <i>0.187</i>	50.80 <i>2.000</i>	5.18 <i>0.204</i>	19.05 <i>0.750</i>
# BLP-064-0152-TSH-C	6.35 <i>0.250</i>	15.24 <i>0.600</i>	7.26 <i>0.286</i>	19.05 <i>0.750</i>
# BLP-064-0254-TSH-C	6.35 <i>0.250</i>	25.40 <i>1.000</i>	7.26 <i>0.286</i>	19.05 <i>0.750</i>
# BLP-064-0330-TSH-C	6.35 <i>0.250</i>	33.02 <i>1.300</i>	7.26 <i>0.286</i>	19.05 <i>0.750</i>
BLP-064-0381-TSH-C	6.35 <i>0.250</i>	38.10 <i>1.500</i>	7.26 <i>0.286</i>	19.05 <i>0.750</i>
# BLP-064-0508-TSH-C	6.35 <i>0.250</i>	50.80 <i>2.000</i>	7.26 <i>0.286</i>	19.05 <i>0.750</i>
# BLP-064-0762-TSH-C	6.35 <i>0.250</i>	76.20 <i>3.000</i>	7.26 <i>0.286</i>	19.05 <i>0.750</i>

Indicates item not stocked at time of printing - Please enquire for lead time

E&OE Pricing and all details subject to change without notice - Copyright Miniature Bearings Australia Pty Ltd

MBA Size Listings are a guide to sizes only and must not be solely relied on for critical design information.

Pins - Ball Lock - Shoulder Type - T Handle

Part Number	Nominal Diameter mm <i>inches</i>	Grip Length mm <i>inches</i>	Locking Ball to End (C) mm <i>inches</i>	Shoulder To End (D) mm <i>inches</i>
# BLP-079-0254-TSH-C	7.94 <i>0.313</i>	25.40 <i>1.000</i>	9.09 <i>0.358</i>	19.05 <i>0.750</i>
# BLP-079-0381-TSH-C	7.94 <i>0.313</i>	38.10 <i>1.500</i>	9.09 <i>0.358</i>	19.05 <i>0.750</i>
# BLP-079-0508-TSH-C	7.94 <i>0.313</i>	50.80 <i>2.000</i>	9.09 <i>0.358</i>	19.05 <i>0.750</i>
# BLP-095-0254-TSH-C	9.53 <i>0.375</i>	25.40 <i>1.000</i>	10.82 <i>0.426</i>	19.05 <i>0.750</i>
# BLP-095-0381-TSH-C	9.53 <i>0.375</i>	38.10 <i>1.500</i>	10.82 <i>0.426</i>	19.05 <i>0.750</i>
# BLP-095-0457-TSH-C	9.53 <i>0.375</i>	45.72 <i>1.800</i>	10.82 <i>0.426</i>	19.05 <i>0.750</i>
# BLP-095-0508-TSH-C	9.53 <i>0.375</i>	50.80 <i>2.000</i>	10.82 <i>0.426</i>	19.05 <i>0.750</i>
# BLP-095-0635-TSH-C	9.53 <i>0.375</i>	63.50 <i>2.500</i>	10.82 <i>0.426</i>	19.05 <i>0.750</i>
# BLP-095-0762-TSH-C	9.53 <i>0.375</i>	76.20 <i>3.000</i>	10.82 <i>0.426</i>	19.05 <i>0.750</i>
# BLP-095-1016-TSH-C	9.53 <i>0.375</i>	101.60 <i>4.000</i>	10.82 <i>0.426</i>	26.98 <i>1.062</i>

Indicates item not stocked at time of printing - Please enquire for lead time

E&OE Pricing and all details subject to change without notice - Copyright Miniature Bearings Australia Pty Ltd

MBA Size Listings are a guide to sizes only and must not be solely relied on for critical design information.

Pins - Ball Lock - Shoulder Type - T Handle

Part Number	Nominal Diameter mm <i>inches</i>	Grip Length mm <i>inches</i>	Locking Ball to End (C) mm <i>inches</i>	Shoulder To End (D) mm <i>inches</i>
# BLP-127-0254-TSH-C	12.70 <i>0.500</i>	25.40 <i>1.000</i>	14.48 <i>0.570</i>	26.98 <i>1.062</i>
BLP-127-0330-TSH-C	12.70 <i>0.500</i>	33.02 <i>1.300</i>	14.48 <i>0.570</i>	26.98 <i>1.062</i>
# BLP-127-0381-TSH-C	12.70 <i>0.500</i>	38.10 <i>1.500</i>	14.48 <i>0.570</i>	26.98 <i>1.062</i>
# BLP-127-0508-TSH-C	12.70 <i>0.500</i>	50.80 <i>2.000</i>	14.48 <i>0.570</i>	26.98 <i>1.062</i>
# BLP-127-0584-TSH-C	12.70 <i>0.500</i>	58.42 <i>2.300</i>	14.48 <i>0.570</i>	26.98 <i>1.062</i>
# BLP-127-0635-TSH-C	12.70 <i>0.500</i>	63.50 <i>2.500</i>	14.48 <i>0.570</i>	26.98 <i>1.062</i>
# BLP-127-0762-TSH-C	12.70 <i>0.500</i>	76.20 <i>3.000</i>	14.48 <i>0.570</i>	26.98 <i>1.062</i>
# BLP-127-0889-TSH-C	12.70 <i>0.500</i>	88.90 <i>3.500</i>	14.48 <i>0.570</i>	26.98 <i>1.062</i>
# BLP-127-1016-TSH-C	12.70 <i>0.500</i>	101.60 <i>4.000</i>	14.48 <i>0.570</i>	26.98 <i>1.062</i>
# BLP-127-1270-TSH-C	12.70 <i>0.500</i>	127.00 <i>5.000</i>	14.48 <i>0.570</i>	26.98 <i>1.062</i>

Indicates item not stocked at time of printing - Please enquire for lead time

E&OE Pricing and all details subject to change without notice - Copyright Miniature Bearings Australia Pty Ltd

MBA Size Listings are a guide to sizes only and must not be solely relied on for critical design information.

Pins - Ball Lock - Shoulder Type - T Handle

Part Number	Nominal Diameter mm <i>inches</i>	Grip Length mm <i>inches</i>	Locking Ball to End (C) mm <i>inches</i>	Shoulder To End (D) mm <i>inches</i>
# BLP-159-0381-TSH-C	15.88 <i>0.625</i>	38.10 <i>1.500</i>	18.03 <i>0.710</i>	28.58 <i>1.125</i>
# BLP-159-0508-TSH-C	15.88 <i>0.625</i>	50.80 <i>2.000</i>	18.03 <i>0.710</i>	28.58 <i>1.125</i>
BLP-159-1016-TSH-C	15.88 <i>0.625</i>	101.60 <i>4.000</i>	18.03 <i>0.710</i>	28.58 <i>1.125</i>
# BLP-191-0508-TSH-C	19.05 <i>0.750</i>	50.80 <i>2.000</i>	21.74 <i>0.856</i>	34.93 <i>1.375</i>
# BLP-191-0635-TSH-C	19.05 <i>0.750</i>	63.50 <i>2.500</i>	21.74 <i>0.856</i>	34.93 <i>1.375</i>
# BLP-191-0762-TSH-C	19.05 <i>0.750</i>	76.20 <i>3.000</i>	21.74 <i>0.856</i>	34.93 <i>1.375</i>
# BLP-191-0889-TSH-C	19.05 <i>0.750</i>	88.90 <i>3.500</i>	21.74 <i>0.856</i>	34.93 <i>1.375</i>
# BLP-191-1016-TSH-C	19.05 <i>0.750</i>	101.60 <i>4.000</i>	21.74 <i>0.856</i>	34.93 <i>1.375</i>
# BLP-191-1270-TSH-C	19.05 <i>0.750</i>	127.00 <i>5.000</i>	21.74 <i>0.856</i>	34.93 <i>1.375</i>
# BLP-254-0762-TSH-C	25.40 <i>1.000</i>	76.20 <i>3.000</i>	28.96 <i>1.140</i>	38.10 <i>1.500</i>

Indicates item not stocked at time of printing - Please enquire for lead time

E&OE Pricing and all details subject to change without notice - Copyright Miniature Bearings Australia Pty Ltd

MBA Size Listings are a guide to sizes only and must not be solely relied on for critical design information.

Pins - Ball Lock - Shoulder Type - T Handle

Part Number	Nominal Diameter mm	Grip Length mm	Locking Ball to End (C) mm	Shoulder To End (D) mm
	<i>inches</i>	<i>inches</i>	<i>inches</i>	<i>inches</i>
# BLP-254-1016-TSH-C	25.40 <i>1.000</i>	101.60 <i>4.000</i>	28.96 <i>1.140</i>	38.10 <i>1.500</i>
# BLP-254-1270-TSH-C	25.40 <i>1.000</i>	127.00 <i>5.000</i>	28.96 <i>1.140</i>	38.10 <i>1.500</i>
# BLP-254-1524-TSH-C	25.40 <i>1.000</i>	152.40 <i>6.000</i>	28.96 <i>1.140</i>	38.10 <i>1.500</i>

Indicates item not stocked at time of printing - Please enquire for lead time

E&OE Pricing and all details subject to change without notice - Copyright Miniature Bearings Australia Pty Ltd

MBA Size Listings are a guide to sizes only and must not be solely relied on for critical design information.

DISTRIBUTED BY

Distributed By:

