



Pins - Dowel - Standard - 316 Stainless - Chamfered End

10/4/2018

Indicates item not stocked at time of printing - Please enquire for lead time

E&OE Pricing and all details subject to change without notice - Copyright Miniature Bearings Australia Pty Ltd

MBA Size Listings are a guide to sizes only and must not be solely relied on for critical design information.

INFORMATION

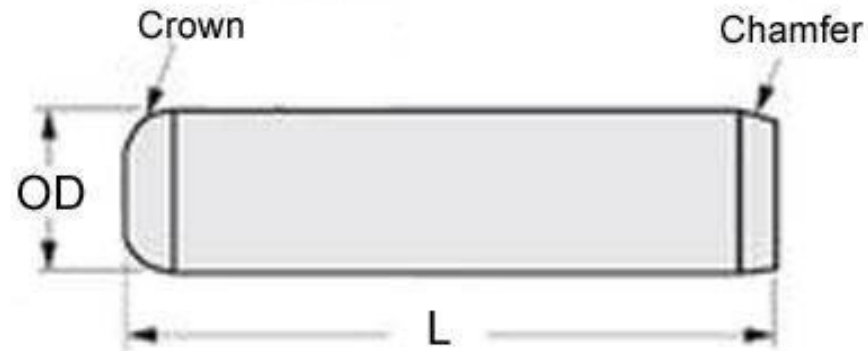
Precision Dowel Pins - 316 Grade - DIN6325, ISO2338

Note! Type 2 pins may be supplied in lieu of type 1 pins.

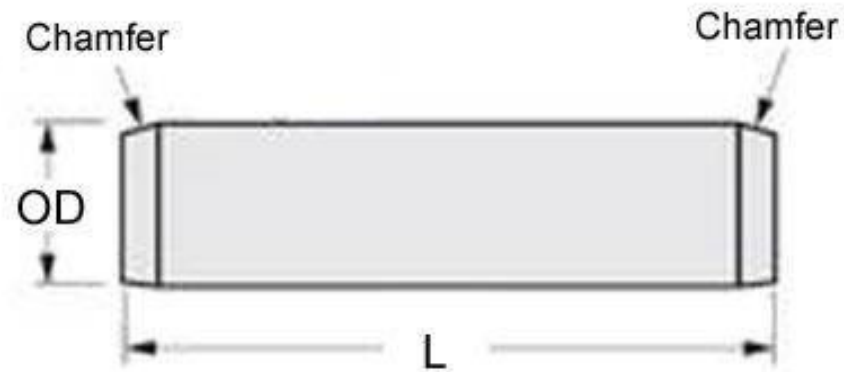
Indicates item not stocked at time of printing - Please enquire for lead time

E&OE Pricing and all details subject to change without notice - Copyright Miniature Bearings Australia Pty Ltd

MBA Size Listings are a guide to sizes only and must not be solely relied on for critical design information.



Type 1



Type 2

Indicates item not stocked at time of printing - Please enquire for lead time

E&OE Pricing and all details subject to change without notice - Copyright Miniature Bearings Australia Pty Ltd

MBA Size Listings are a guide to sizes only and must not be solely relied on for critical design information.

Pins - Dowel - Standard - 316 Stainless - Chamfered End

| Part Number | Diameter (D) mm <i>inches</i> | Length (L) mm <i>inches</i> | Overall Length | Type | Material |
|------------------|----------------------------------|--------------------------------|----------------|------|---------------|
| DP030-024-316-2 | 3.000 <i>0.118</i> | 24.00 <i>0.945</i> | 24.00 | 2 | 316 Stainless |
| DP080-040-316-2U | 8.000 <i>0.315</i> | 40.00 <i>1.575</i> | 40.00 | 2 | 316 Stainless |

Indicates item not stocked at time of printing - Please enquire for lead time

E&OE Pricing and all details subject to change without notice - Copyright Miniature Bearings Australia Pty Ltd

MBA Size Listings are a guide to sizes only and must not be solely relied on for critical design information.

DISTRIBUTED BY

Distributed By:

