



# Pins - Locating - Spring - Plastic Pin - Unsealed

10/4/2018

# Indicates item not stocked at time of printing - Please enquire for lead time

E&OE Pricing and all details subject to change without notice - Copyright Miniature Bearings Australia Pty Ltd

MBA Size Listings are a guide to sizes only and must not be solely relied on for critical design information.

Page 1 of 4

## INFORMATION

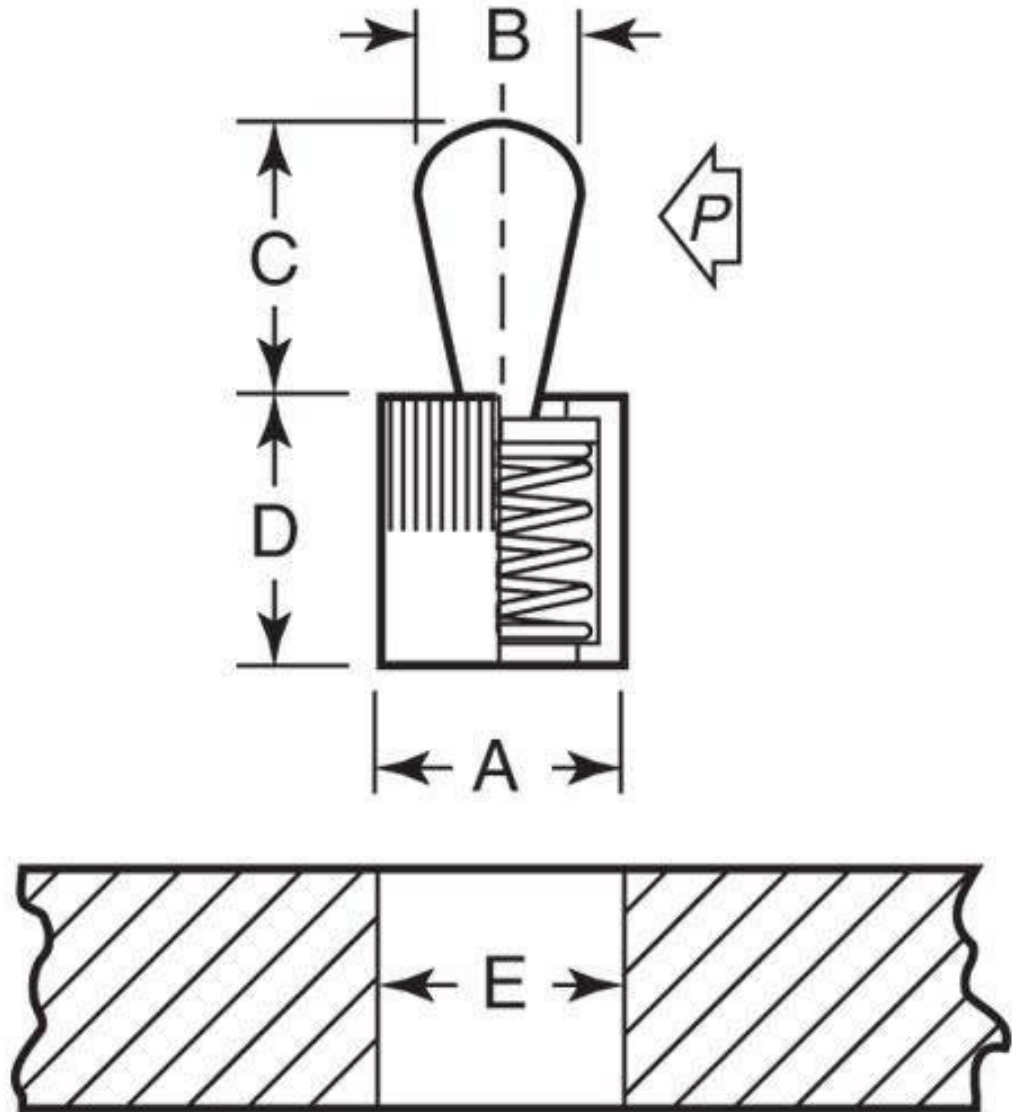
Aluminium Body. For fixturing small parts in tight areas. Ideal for positioning and chucking flat or round parts for profile clamping.

This catalogue to be read in conjunction with information at <http://www.minibearings.com.au//partslist/toolsinstallationspringlocatingpin/>

# Indicates item not stocked at time of printing - Please enquire for lead time

E&OE Pricing and all details subject to change without notice - Copyright Miniature Bearings Australia Pty Ltd

MBA Size Listings are a guide to sizes only and must not be solely relied on for critical design information.



# Indicates item not stocked at time of printing - Please enquire for lead time

E&OE Pricing and all details subject to change without notice - Copyright Miniature Bearings Australia Pty Ltd

MBA Size Listings are a guide to sizes only and must not be solely relied on for critical design information.

## Pins - Locating - Spring - Plastic Pin - Unsealed

Part Number	A mm <i>inches</i>	B mm <i>inches</i>	C mm <i>inches</i>	D mm <i>inches</i>	E mm <i>inches</i>	P Force Kg	X mm <i>inches</i>	Installation Tool
# JLP-200RS	6.35 <i>0.250</i>	3.00 <i>0.118</i>	3.71 <i>0.146</i>	7.49 <i>0.295</i>	6.35 <i>0.250</i>	2.00	0.99 <i>0.039</i>	JLP-400
# JLP-195RS	6.35 <i>0.250</i>	3.00 <i>0.118</i>	3.71 <i>0.146</i>	7.49 <i>0.295</i>	6.35 <i>0.250</i>	1.00	0.99 <i>0.039</i>	JLP-400
# JLP-215RS	11.13 <i>0.438</i>	5.00 <i>0.197</i>	7.29 <i>0.287</i>	8.99 <i>0.354</i>	11.13 <i>0.438</i>	9.07	1.60 <i>0.063</i>	JLP-405
# JLP-210RS	11.13 <i>0.438</i>	5.00 <i>0.197</i>	7.29 <i>0.287</i>	8.99 <i>0.354</i>	11.13 <i>0.438</i>	6.12	1.60 <i>0.063</i>	JLP-405
# JLP-205RS	11.13 <i>0.438</i>	5.00 <i>0.197</i>	7.29 <i>0.287</i>	8.99 <i>0.354</i>	11.13 <i>0.438</i>	3.04	1.60 <i>0.063</i>	JLP-405
# JLP-225RS	11.13 <i>0.438</i>	5.99 <i>0.236</i>	10.31 <i>0.406</i>	8.99 <i>0.354</i>	11.13 <i>0.438</i>	3.04	1.91 <i>0.075</i>	JLP-410
# JLP-250RS	15.88 <i>0.625</i>	10.01 <i>0.394</i>	16.61 <i>0.654</i>	15.88 <i>0.625</i>	15.88 <i>0.625</i>	15.88	3.40 <i>0.134</i>	JLP-420
# JLP-245RS	15.88 <i>0.625</i>	10.01 <i>0.394</i>	16.61 <i>0.654</i>	15.88 <i>0.625</i>	15.88 <i>0.625</i>	7.94	3.40 <i>0.134</i>	JLP-420

# Indicates item not stocked at time of printing - Please enquire for lead time

E&OE Pricing and all details subject to change without notice - Copyright Miniature Bearings Australia Pty Ltd

MBA Size Listings are a guide to sizes only and must not be solely relied on for critical design information.

DISTRIBUTED BY

Distributed By:

