



Pins - Locating - Spring - Stainless Pin - Unsealed

10/4/2018

Indicates item not stocked at time of printing - Please enquire for lead time

E&OE Pricing and all details subject to change without notice - Copyright Miniature Bearings Australia Pty Ltd

MBA Size Listings are a guide to sizes only and must not be solely relied on for critical design information.

Page 1 of 5

INFORMATION

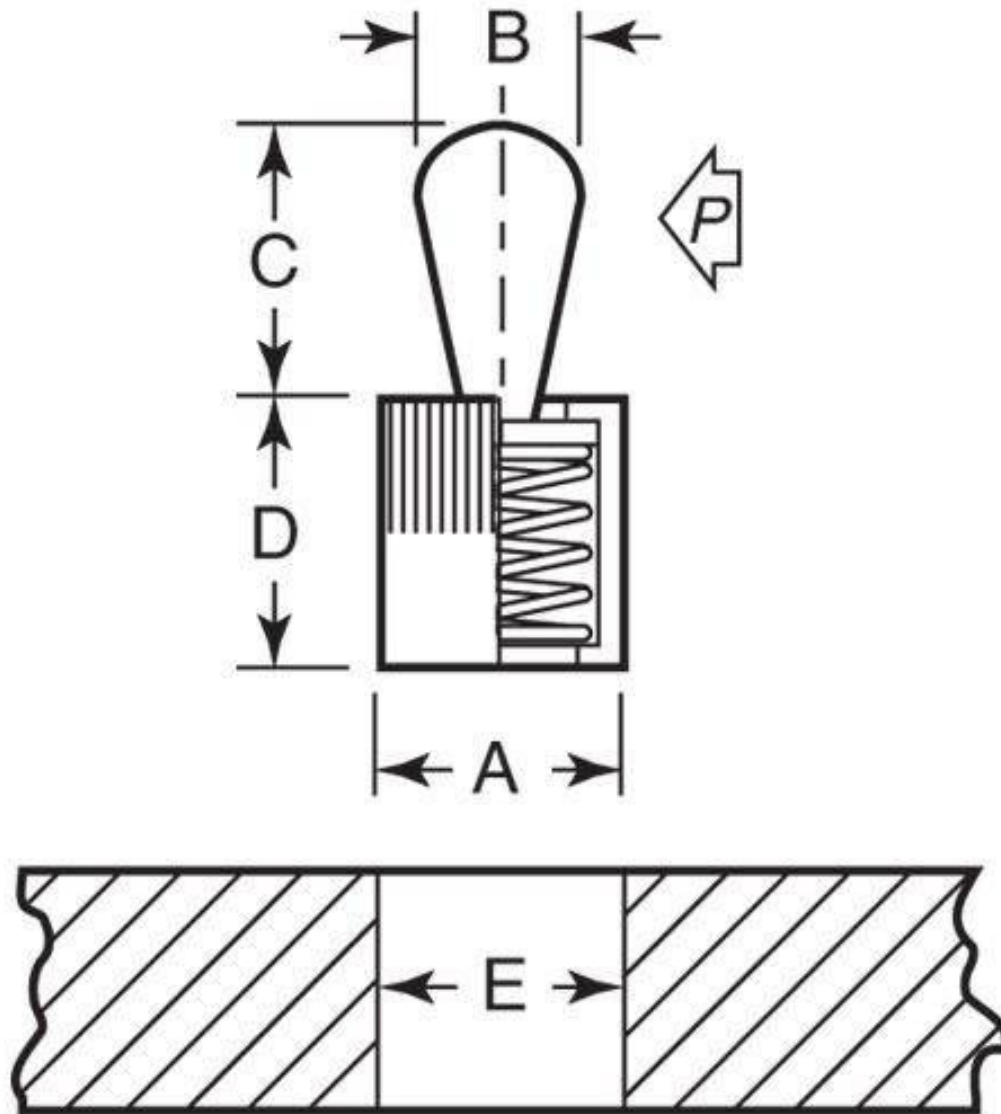
Aluminium Body. For fixturing small parts in tight areas. Ideal for positioning and chucking flat or round parts for profile clamping.

This catalogue to be read in conjunction with information at <http://www.minibearings.com.au//partslist/toolsinstallationspringlocatingpin/>

Indicates item not stocked at time of printing - Please enquire for lead time

E&OE Pricing and all details subject to change without notice - Copyright Miniature Bearings Australia Pty Ltd

MBA Size Listings are a guide to sizes only and must not be solely relied on for critical design information.



Indicates item not stocked at time of printing - Please enquire for lead time

E&OE Pricing and all details subject to change without notice - Copyright Miniature Bearings Australia Pty Ltd

MBA Size Listings are a guide to sizes only and must not be solely relied on for critical design information.

Pins - Locating - Spring - Stainless Pin - Unsealed

Part Number	A mm <i>inches</i>	B mm <i>inches</i>	C mm <i>inches</i>	D mm <i>inches</i>	E mm <i>inches</i>	P Force Kg	X mm <i>inches</i>	Installation Tool
# JLP-260RS	6.35 <i>0.250</i>	3.00 <i>0.118</i>	3.71 <i>0.146</i>	7.49 <i>0.295</i>	6.35 <i>0.250</i>	2.00	0.99 <i>0.039</i>	JLP-400
# JLP-255RS	6.35 <i>0.250</i>	3.00 <i>0.118</i>	3.71 <i>0.146</i>	7.49 <i>0.295</i>	6.35 <i>0.250</i>	1.00	0.99 <i>0.039</i>	JLP-400
# JLP-275RS	11.13 <i>0.438</i>	5.00 <i>0.197</i>	7.29 <i>0.287</i>	8.99 <i>0.354</i>	11.13 <i>0.438</i>	9.07	1.60 <i>0.063</i>	JLP-405
# JLP-270RS	11.13 <i>0.438</i>	5.00 <i>0.197</i>	7.29 <i>0.287</i>	8.99 <i>0.354</i>	11.13 <i>0.438</i>	6.12	1.60 <i>0.063</i>	JLP-405
# JLP-265RS	11.13 <i>0.438</i>	5.00 <i>0.197</i>	7.29 <i>0.287</i>	8.99 <i>0.354</i>	11.13 <i>0.438</i>	3.04	1.60 <i>0.063</i>	JLP-405
# JLP-295RS	11.13 <i>0.438</i>	5.99 <i>0.236</i>	10.31 <i>0.406</i>	8.99 <i>0.354</i>	11.13 <i>0.438</i>	9.07	1.91 <i>0.075</i>	JLP-410
# JLP-290RS	11.13 <i>0.438</i>	5.99 <i>0.236</i>	10.31 <i>0.406</i>	8.99 <i>0.354</i>	11.13 <i>0.438</i>	6.12	1.91 <i>0.075</i>	JLP-410
# JLP-285RS	11.13 <i>0.438</i>	5.99 <i>0.236</i>	10.31 <i>0.406</i>	8.99 <i>0.354</i>	11.13 <i>0.438</i>	3.04	1.91 <i>0.075</i>	JLP-410
# JLP-280RS	11.13 <i>0.438</i>	5.99 <i>0.236</i>	10.31 <i>0.406</i>	8.99 <i>0.354</i>	11.13 <i>0.438</i>	2.00	1.91 <i>0.075</i>	JLP-410
# JLP-305RS	12.70 <i>0.500</i>	8.00 <i>0.315</i>	13.21 <i>0.520</i>	13.00 <i>0.512</i>	12.70 <i>0.500</i>	10.07	2.69 <i>0.106</i>	JLP-415

Indicates item not stocked at time of printing - Please enquire for lead time

E&OE Pricing and all details subject to change without notice - Copyright Miniature Bearings Australia Pty Ltd

MBA Size Listings are a guide to sizes only and must not be solely relied on for critical design information.

Pins - Locating - Spring - Stainless Pin - Unsealed

Part Number	A mm	B mm	C mm	D mm	E mm	P Force Kg	X mm	Installation Tool
	<i>inches</i>	<i>inches</i>	<i>inches</i>	<i>inches</i>	<i>inches</i>		<i>inches</i>	
# JLP-300RS	12.70 <i>0.500</i>	8.00 <i>0.315</i>	13.21 <i>0.520</i>	13.00 <i>0.512</i>	12.70 <i>0.500</i>	5.03	2.69 <i>0.106</i>	JLP-415
# JLP-315RS	15.88 <i>0.625</i>	10.01 <i>0.394</i>	16.61 <i>0.654</i>	15.88 <i>0.625</i>	15.88 <i>0.625</i>	15.88	3.40 <i>0.134</i>	JLP-420
# JLP-310RS	15.88 <i>0.625</i>	10.01 <i>0.394</i>	16.61 <i>0.654</i>	15.88 <i>0.625</i>	15.88 <i>0.625</i>	7.94	3.40 <i>0.134</i>	JLP-420

Indicates item not stocked at time of printing - Please enquire for lead time

E&OE Pricing and all details subject to change without notice - Copyright Miniature Bearings Australia Pty Ltd

MBA Size Listings are a guide to sizes only and must not be solely relied on for critical design information.

DISTRIBUTED BY

Distributed By:

