



Pins - Locating - Spring - Steel Pin - Sealed

10/4/2018

Indicates item not stocked at time of printing - Please enquire for lead time

E&OE Pricing and all details subject to change without notice - Copyright Miniature Bearings Australia Pty Ltd

MBA Size Listings are a guide to sizes only and must not be solely relied on for critical design information.

Page 1 of 5

INFORMATION

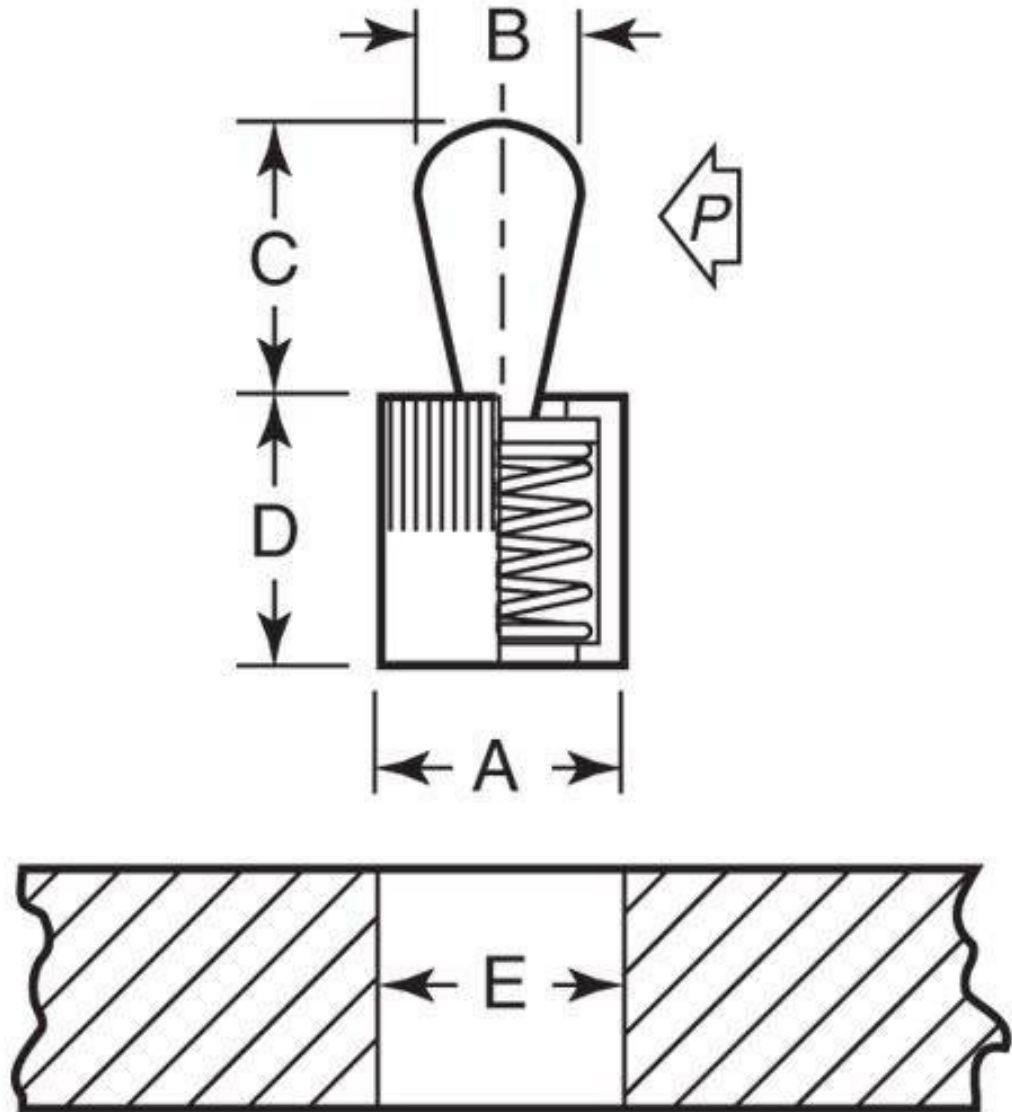
Aluminium Body. For fixturing small parts in tight areas. Ideal for positioning and chucking flat or round parts for profile clamping.

This catalogue to be read in conjunction with information at <http://www.minibearings.com.au//partslist/toolsinstallationspringlocatingpin/>

Indicates item not stocked at time of printing - Please enquire for lead time

E&OE Pricing and all details subject to change without notice - Copyright Miniature Bearings Australia Pty Ltd

MBA Size Listings are a guide to sizes only and must not be solely relied on for critical design information.



Indicates item not stocked at time of printing - Please enquire for lead time

E&OE Pricing and all details subject to change without notice - Copyright Miniature Bearings Australia Pty Ltd

MBA Size Listings are a guide to sizes only and must not be solely relied on for critical design information.

Pins - Locating - Spring - Steel Pin - Sealed

Part Number	A mm <i>inches</i>	B mm <i>inches</i>	C mm <i>inches</i>	D mm <i>inches</i>	E mm <i>inches</i>	P Force Kg	X mm <i>inches</i>	Installation Tool
# JLP-5RS	6.35 <i>0.250</i>	3.00 <i>0.118</i>	4.01 <i>0.158</i>	7.01 <i>0.276</i>	6.35 <i>0.250</i>	1.00	0.89 <i>0.035</i>	JLP-400
# JLP-15RS	6.35 <i>0.250</i>	3.00 <i>0.118</i>	4.01 <i>0.158</i>	7.01 <i>0.276</i>	6.35 <i>0.250</i>	4.08	0.89 <i>0.035</i>	JLP-400
# JLP-10RS	6.35 <i>0.250</i>	3.00 <i>0.118</i>	4.01 <i>0.158</i>	7.01 <i>0.276</i>	6.35 <i>0.250</i>	2.04	0.89 <i>0.035</i>	JLP-400
# JLP-30RS	11.13 <i>0.438</i>	5.00 <i>0.197</i>	5.99 <i>0.236</i>	11.99 <i>0.472</i>	11.13 <i>0.438</i>	9.75	1.60 <i>0.063</i>	JLP-405
# JLP-25RS	11.13 <i>0.438</i>	5.00 <i>0.197</i>	5.99 <i>0.236</i>	11.99 <i>0.472</i>	11.13 <i>0.438</i>	5.08	1.60 <i>0.063</i>	JLP-405
# JLP-20RS	11.13 <i>0.438</i>	5.00 <i>0.197</i>	5.99 <i>0.236</i>	11.99 <i>0.472</i>	11.13 <i>0.438</i>	2.04	1.60 <i>0.063</i>	JLP-405
# JLP-45RS	11.13 <i>0.438</i>	5.99 <i>0.236</i>	11.13 <i>0.438</i>	11.99 <i>0.472</i>	11.13 <i>0.438</i>	15.42	1.80 <i>0.071</i>	JLP-410
# JLP-40RS	11.13 <i>0.438</i>	5.99 <i>0.236</i>	11.13 <i>0.438</i>	11.99 <i>0.472</i>	11.13 <i>0.438</i>	7.71	1.80 <i>0.071</i>	JLP-410
# JLP-35RS	11.13 <i>0.438</i>	5.99 <i>0.236</i>	11.13 <i>0.438</i>	11.99 <i>0.472</i>	11.13 <i>0.438</i>	4.08	1.80 <i>0.071</i>	JLP-410
# JLP-60RS	12.70 <i>0.500</i>	8.00 <i>0.315</i>	13.00 <i>0.512</i>	14.00 <i>0.551</i>	12.70 <i>0.500</i>	20.41	2.59 <i>0.102</i>	JLP-415

Indicates item not stocked at time of printing - Please enquire for lead time

E&OE Pricing and all details subject to change without notice - Copyright Miniature Bearings Australia Pty Ltd

MBA Size Listings are a guide to sizes only and must not be solely relied on for critical design information.

Pins - Locating - Spring - Steel Pin - Sealed

Part Number	A mm	B mm	C mm	D mm	E mm	P Force Kg	X mm	Installation Tool
	<i>inches</i>	<i>inches</i>	<i>inches</i>	<i>inches</i>	<i>inches</i>		<i>inches</i>	
# JLP-55RS	12.70 <i>0.500</i>	8.00 <i>0.315</i>	13.00 <i>0.512</i>	14.00 <i>0.551</i>	12.70 <i>0.500</i>	10.21	2.59 <i>0.102</i>	JLP-415
# JLP-50RS	12.70 <i>0.500</i>	8.00 <i>0.315</i>	13.00 <i>0.512</i>	14.00 <i>0.551</i>	12.70 <i>0.500</i>	5.08	2.59 <i>0.102</i>	JLP-415
# JLP-75RS	15.88 <i>0.625</i>	10.01 <i>0.394</i>	15.88 <i>0.625</i>	18.01 <i>0.709</i>	15.88 <i>0.625</i>	30.62	3.20 <i>0.126</i>	JLP-420
# JLP-70RS	15.88 <i>0.625</i>	10.01 <i>0.394</i>	15.88 <i>0.625</i>	18.01 <i>0.709</i>	15.88 <i>0.625</i>	20.41	3.20 <i>0.126</i>	JLP-420
# JLP-65RS	15.88 <i>0.625</i>	10.01 <i>0.394</i>	15.88 <i>0.625</i>	18.01 <i>0.709</i>	15.88 <i>0.625</i>	10.21	3.20 <i>0.126</i>	JLP-420

Indicates item not stocked at time of printing - Please enquire for lead time

E&OE Pricing and all details subject to change without notice - Copyright Miniature Bearings Australia Pty Ltd

MBA Size Listings are a guide to sizes only and must not be solely relied on for critical design information.

DISTRIBUTED BY

Distributed By:

