



Pins - Wire Lock Lynch - Single Wire - Square - Carbon Steel

10/4/2018

Indicates item not stocked at time of printing - Please enquire for lead time

E&OE Pricing and all details subject to change without notice - Copyright Miniature Bearings Australia Pty Ltd

MBA Size Listings are a guide to sizes only and must not be solely relied on for critical design information.

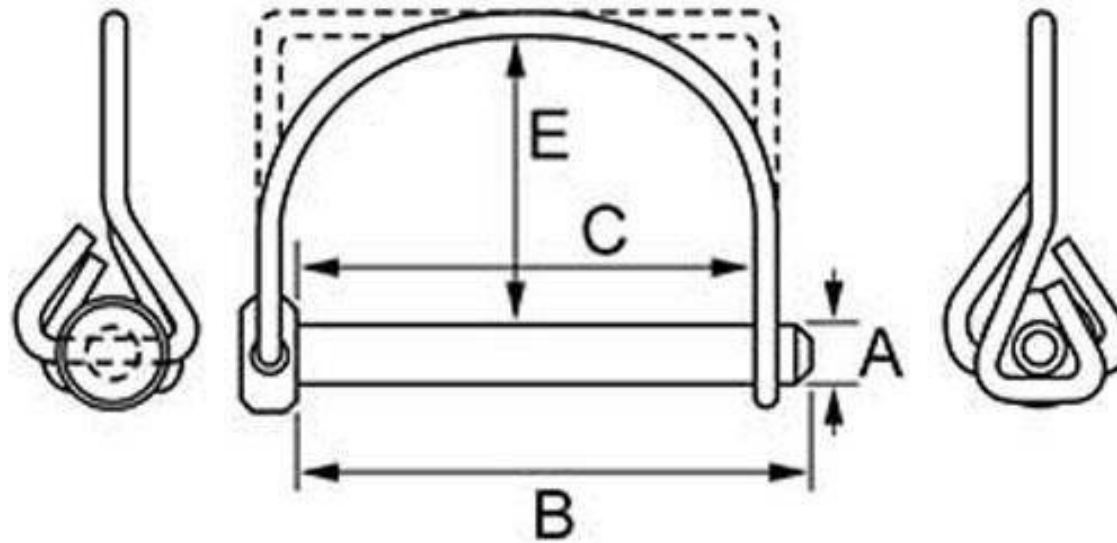
INFORMATION

Also known as snapper pins

Indicates item not stocked at time of printing - Please enquire for lead time

E&OE Pricing and all details subject to change without notice - Copyright Miniature Bearings Australia Pty Ltd

MBA Size Listings are a guide to sizes only and must not be solely relied on for critical design information.



Indicates item not stocked at time of printing - Please enquire for lead time

E&OE Pricing and all details subject to change without notice - Copyright Miniature Bearings Australia Pty Ltd

MBA Size Listings are a guide to sizes only and must not be solely relied on for critical design information.

Pins - Wire Lock Lynch - Single Wire - Square - Carbon Steel

Part Number	Pin Diameter (A) mm	Grip Length (C) mm	Wire Thickness (T) mm	Clearance To Wire (E) mm	Material	Pin Length (B) mm	Weight Per Piece g
	<i>inches</i>	<i>inches</i>	<i>inches</i>	<i>inches</i>		<i>inches</i>	
# LYP-Q1-064-064-CZ	6.35	63.50	3.0	41.3	Carbon Steel / Spring Wire	69.9	40
	<i>0.250</i>	<i>2.500</i>	<i>0.118</i>	<i>1.626</i>		<i>2.752</i>	
LYP-Q1-064-063-CZ	6.35	63.50	3.0	41.3	Carbon Steel / Spring Wire	69.9	33
	<i>0.250</i>	<i>2.500</i>	<i>0.118</i>	<i>1.626</i>		<i>2.752</i>	
# LYP-Q1-079-064-CZ	7.94	63.50	3.0	44.5	Carbon Steel / Spring Wire	69.9	48
	<i>0.313</i>	<i>2.500</i>	<i>0.118</i>	<i>1.752</i>		<i>2.752</i>	
# LYP-Q1-079-063-CZ	7.94	63.50	3.0	44.5	Carbon Steel / Spring Wire	69.9	49
	<i>0.313</i>	<i>2.500</i>	<i>0.118</i>	<i>1.752</i>		<i>2.752</i>	
# LYP-Q1-079-089-CZ	7.94	88.90	3.0	44.5	Carbon Steel / Spring Wire	95.3	57
	<i>0.313</i>	<i>3.500</i>	<i>0.118</i>	<i>1.752</i>		<i>3.752</i>	
# LYP-Q1-095-057-CZ	9.53	57.15	3.0	38.1	Carbon Steel / Spring Wire	63.5	62
	<i>0.375</i>	<i>2.250</i>	<i>0.118</i>	<i>1.500</i>		<i>2.500</i>	
# LYP-Q1-095-064-CZ	9.53	63.50	3.0	38.1	Carbon Steel / Spring Wire	69.9	62
	<i>0.375</i>	<i>2.500</i>	<i>0.118</i>	<i>1.500</i>		<i>2.752</i>	
# LYP-Q1-095-063-CZ	9.53	63.50	3.0	38.1	Carbon Steel / Spring Wire	69.9	63
	<i>0.375</i>	<i>2.500</i>	<i>0.118</i>	<i>1.500</i>		<i>2.752</i>	

Indicates item not stocked at time of printing - Please enquire for lead time

Page 4 of 5

E&OE Pricing and all details subject to change without notice - Copyright Miniature Bearings Australia Pty Ltd
MBA Size Listings are a guide to sizes only and must not be solely relied on for critical design information.

Pins - Wire Lock Lynch - Single Wire - Square - Carbon Steel

Part Number	Pin Diameter (A) mm	Grip Length (C) mm	Wire Thickness (T) mm	Clearance To Wire (E) mm	Material	Pin Length (B) mm	Weight Per Piece g
	<i>inches</i>	<i>inches</i>	<i>inches</i>	<i>inches</i>		<i>inches</i>	
# LYP-Q1-095-076-CZ	9.53	76.20	3.0	38.1	Carbon Steel / Spring Wire	82.6	76
	<i>0.375</i>	<i>3.000</i>	<i>0.118</i>	<i>1.500</i>		<i>3.252</i>	

Indicates item not stocked at time of printing - Please enquire for lead time

E&OE Pricing and all details subject to change without notice - Copyright Miniature Bearings Australia Pty Ltd

MBA Size Listings are a guide to sizes only and must not be solely relied on for critical design information.

DISTRIBUTED BY

Distributed By:

