



Plungers - Indexing - Locking - With Knob - Steel

10/4/2018

Indicates item not stocked at time of printing - Please enquire for lead time

E&OE Pricing and all details subject to change without notice - Copyright Miniature Bearings Australia Pty Ltd

MBA Size Listings are a guide to sizes only and must not be solely relied on for critical design information.

INFORMATION

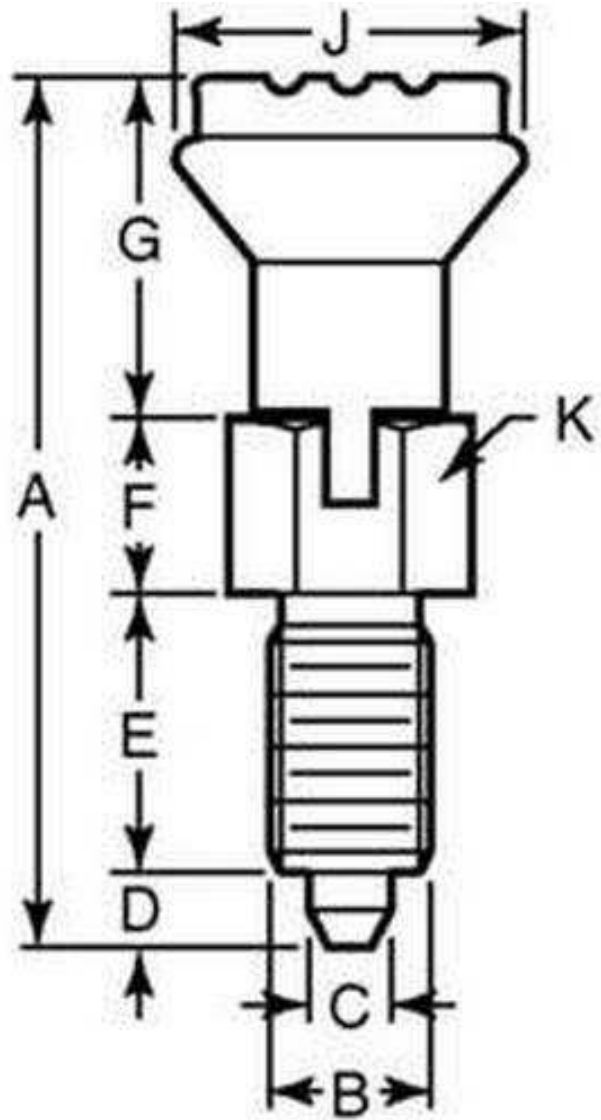
Used to prevent change in locking position due to shearing force. Spring loaded for use in fastening, locating and indexing on equipment, tooling and other applications.

Body and pin are steel with black oxide finish.

Indicates item not stocked at time of printing - Please enquire for lead time

E&OE Pricing and all details subject to change without notice - Copyright Miniature Bearings Australia Pty Ltd

MBA Size Listings are a guide to sizes only and must not be solely relied on for critical design information.



Indicates item not stocked at time of printing - Please enquire for lead time

E&OE Pricing and all details subject to change without notice - Copyright Miniature Bearings Australia Pty Ltd

MBA Size Listings are a guide to sizes only and must not be solely relied on for critical design information.

Plungers - Indexing - Locking - With Knob - Steel

Part Number	Tip Diameter (C) mm	Initial End Force Kg	Final End Force Kg	Thread (B)	Overall Length (A) mm	Tip Length (D) mm	Thread Length (E) mm	F mm	Handle Length (G) mm	Handle Diameter (J) mm
	<i>inches</i>				<i>inches</i>	<i>inches</i>	<i>inches</i>	<i>inches</i>	<i>inches</i>	<i>inches</i>
# PLIT-050-095C-47-LK-C	5.000	0.51	1.22	3/8-16 UNC (9.525mm)	46.990	5.080	17.018	7.112	18.034	21.082
	<i>0.197</i>				<i>1.850</i>	<i>0.200</i>	<i>0.670</i>	<i>0.280</i>	<i>0.710</i>	<i>0.830</i>
# PLIT-050-095F-47-LK-C	5.000	0.51	1.22	3/8-24 UNF (9.525mm)	46.990	5.080	17.018	7.112	18.034	21.082
	<i>0.197</i>				<i>1.850</i>	<i>0.200</i>	<i>0.670</i>	<i>0.280</i>	<i>0.710</i>	<i>0.830</i>
# PLIT-060-127C-56-LK-C	6.000	0.61	1.43	1/2-13 UNC (12.700mm)	55.880	6.096	20.066	7.874	22.098	24.892
	<i>0.236</i>				<i>2.200</i>	<i>0.240</i>	<i>0.790</i>	<i>0.310</i>	<i>0.870</i>	<i>0.980</i>
# PLIT-080-158C-74-LK-C	8.000	1.53	3.57	5/8-11 UNC (15.875mm)	73.914	7.874	25.908	9.906	29.972	33.020
	<i>0.315</i>				<i>2.910</i>	<i>0.310</i>	<i>1.020</i>	<i>0.390</i>	<i>1.180</i>	<i>1.300</i>
# PLIT-100-191C-80-LK-C	10.000	2.04	4.08	3/4-10 UNC (19.050mm)	80.010	9.906	27.940	11.938	29.972	33.020
	<i>0.394</i>				<i>3.150</i>	<i>0.390</i>	<i>1.100</i>	<i>0.470</i>	<i>1.180</i>	<i>1.300</i>

Indicates item not stocked at time of printing - Please enquire for lead time

Page 4 of 4

E&OE Pricing and all details subject to change without notice - Copyright Miniature Bearings Australia Pty Ltd
MBA Size Listings are a guide to sizes only and must not be solely relied on for critical design information.

DISTRIBUTED BY

Distributed By:

