



Plungers - Spring - L Handle - Locking - Steel

10/4/2018

Indicates item not stocked at time of printing - Please enquire for lead time

E&OE Pricing and all details subject to change without notice - Copyright Miniature Bearings Australia Pty Ltd

MBA Size Listings are a guide to sizes only and must not be solely relied on for critical design information.

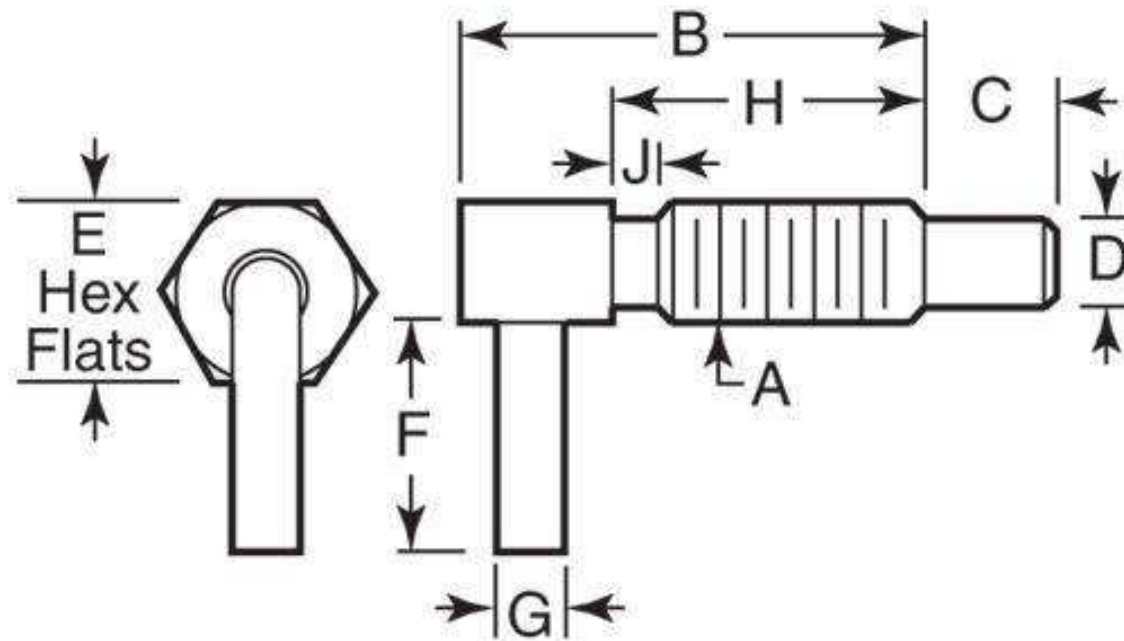
INFORMATION

Items shown with Long-Lok have a dry threadlocking sealant applied to thread.

Indicates item not stocked at time of printing - Please enquire for lead time

E&OE Pricing and all details subject to change without notice - Copyright Miniature Bearings Australia Pty Ltd

MBA Size Listings are a guide to sizes only and must not be solely relied on for critical design information.



Indicates item not stocked at time of printing - Please enquire for lead time

E&OE Pricing and all details subject to change without notice - Copyright Miniature Bearings Australia Pty Ltd

MBA Size Listings are a guide to sizes only and must not be solely relied on for critical design information.

Plungers - Spring - L Handle - Locking - Steel

Part Number	Thread Size (A)	Initial Pressure (F1) N	Final Pressure (F2) N	Body Length (B) mm	Tip Length (C) mm	Tip Diameter (D) mm	Hex Flats (E) mm	Handle Length (F) mm	Handle Diameter (G) mm	Thread Length (H) mm
				<i>inches</i>	<i>inches</i>	<i>inches</i>	<i>inches</i>	<i>inches</i>	<i>inches</i>	<i>inches</i>
# PLST-060-320-HLCL-011	M6x1 (6mm Standard)	2.20	11.10	32.00	10.00	4.00	6.00	12.70	2.30	20.00
				<i>1.260</i>	<i>0.394</i>	<i>0.157</i>	<i>0.236</i>	<i>0.500</i>	<i>0.091</i>	<i>0.787</i>
# PLST-064C-191-HLCL-002	1/4-20 UNC (6.35mm)	0.53	2.22	19.05	5.08	4.06	6.35	10.16	2.29	12.70
				<i>0.750</i>	<i>0.200</i>	<i>0.160</i>	<i>0.250</i>	<i>0.400</i>	<i>0.090</i>	<i>0.500</i>
# PLST-064C-318-HLCL-011	1/4-20 UNC (6.35mm)	2.22	11.12	31.75	9.65	4.06	6.35	12.70	2.29	20.32
				<i>1.250</i>	<i>0.380</i>	<i>0.160</i>	<i>0.250</i>	<i>0.500</i>	<i>0.090</i>	<i>0.800</i>
# PLST-095C-287-HLCL-006	3/8-16 UNC (9.525mm)	1.11	5.56	28.70	7.62	6.35	9.65	14.22	3.56	19.05
				<i>1.130</i>	<i>0.300</i>	<i>0.250</i>	<i>0.380</i>	<i>0.560</i>	<i>0.140</i>	<i>0.750</i>
# PLST-095C-508-HLCL-017	3/8-16 UNC (9.525mm)	3.34	16.68	50.80	14.22	6.35	9.65	19.05	3.56	33.27
				<i>2.000</i>	<i>0.560</i>	<i>0.250</i>	<i>0.380</i>	<i>0.750</i>	<i>0.140</i>	<i>1.310</i>
# PLST-100-510-HLCL-017	M10x1.5 (10mm Standard)	3.30	16.70	51.00	14.00	6.00	10.00	19.00	3.50	33.00
				<i>2.008</i>	<i>0.551</i>	<i>0.236</i>	<i>0.394</i>	<i>0.748</i>	<i>0.138</i>	<i>1.299</i>
# PLST-120-540-HLCL-022	M12x1.75 (12mm Standard)	4.50	22.30	54.00	19.00	7.00	12.00	25.40	4.80	32.00
				<i>2.126</i>	<i>0.748</i>	<i>0.276</i>	<i>0.472</i>	<i>1.000</i>	<i>0.189</i>	<i>1.260</i>
# PLST-127C-381-HLCL-009	1/2-13 UNC (12.7mm)	2.22	8.90	38.10	10.16	7.87	12.70	19.05	4.83	25.40
				<i>1.500</i>	<i>0.400</i>	<i>0.310</i>	<i>0.500</i>	<i>0.750</i>	<i>0.190</i>	<i>1.000</i>

Indicates item not stocked at time of printing - Please enquire for lead time

Page 4 of 5

E&OE Pricing and all details subject to change without notice - Copyright Miniature Bearings Australia Pty Ltd
MBA Size Listings are a guide to sizes only and must not be solely relied on for critical design information.

Plungers - Spring - L Handle - Locking - Steel

Part Number	Thread Size (A)	Initial Pressure (F1) N	Final Pressure (F2) N	Body Length (B) mm	Tip Length (C) mm	Tip Diameter (D) mm	Hex Flats (E) mm	Handle Length (F) mm	Handle Diameter (G) mm	Thread Length (H) mm
				<i>inches</i>	<i>inches</i>	<i>inches</i>	<i>inches</i>	<i>inches</i>	<i>inches</i>	<i>inches</i>
# PLST-127C-536-HLCL-022	1/2-13 UNC (12.7mm)	4.45	22.24	53.59	19.05	7.87	12.70	25.40	4.83	31.75
				<i>2.110</i>	<i>0.750</i>	<i>0.310</i>	<i>0.500</i>	<i>1.000</i>	<i>0.190</i>	<i>1.250</i>
# PLST-159C-478-HLCL-011	5/8-11 UNC (15.875mm)	3.34	11.12	47.75	12.70	9.65	15.75	22.35	4.83	31.75
				<i>1.880</i>	<i>0.500</i>	<i>0.380</i>	<i>0.620</i>	<i>0.880</i>	<i>0.190</i>	<i>1.250</i>
# PLST-159C-775-HLCL-022	5/8-11 UNC (15.875mm)	4.45	22.24	77.47	25.40	9.65	15.75	25.40	4.83	50.80
				<i>3.050</i>	<i>1.000</i>	<i>0.380</i>	<i>0.620</i>	<i>1.000</i>	<i>0.190</i>	<i>2.000</i>

Indicates item not stocked at time of printing - Please enquire for lead time

Page 5 of 5

E&OE Pricing and all details subject to change without notice - Copyright Miniature Bearings Australia Pty Ltd
MBA Size Listings are a guide to sizes only and must not be solely relied on for critical design information.

DISTRIBUTED BY

Distributed By:

